

Data Path : Z:\pestpcbsrv\HPCHEM1\FID_C\Data\FC081821AL\
 Data File : FC055270.D
 Signal(s) : FID1A.CH
 Acq On : 18 Aug 2021 17:43
 Operator : AJ\MA
 Sample : M3441-01
 Misc :
 ALS Vial : 4 Sample Multiplier: 1

Integration File: autoint1.e
 Quant Time: Aug 19 04:55:26 2021
 Quant Method : Z:\pestpcbsrv\HPCHEM1\FID_C\Method\Alaphatic EPH 080321.M
 Quant Title : GC Extractables
 QLast Update : Wed Aug 04 02:08:31 2021
 Response via : Initial Calibration
 Integrator: ChemStation 6890 Scale Mode: Large solvent peaks clipped

Volume Inj. : 1 ul
 Signal Phase : Rxi-1ms
 Signal Info : 20M x 0.18mm x 0.18um

Compound	R.T.	Response	Conc Units

System Monitoring Compounds			
9) S ortho-Terphenyl (SURR)	11.306	6526190	51.836 ug/ml
Spiked Amount	50.000	Recovery	= 103.67%
12) S 1-chlorooctadecane (S...	12.745	5124584	51.708 ug/ml
Spiked Amount	50.000	Recovery	= 103.42%

Target Compounds

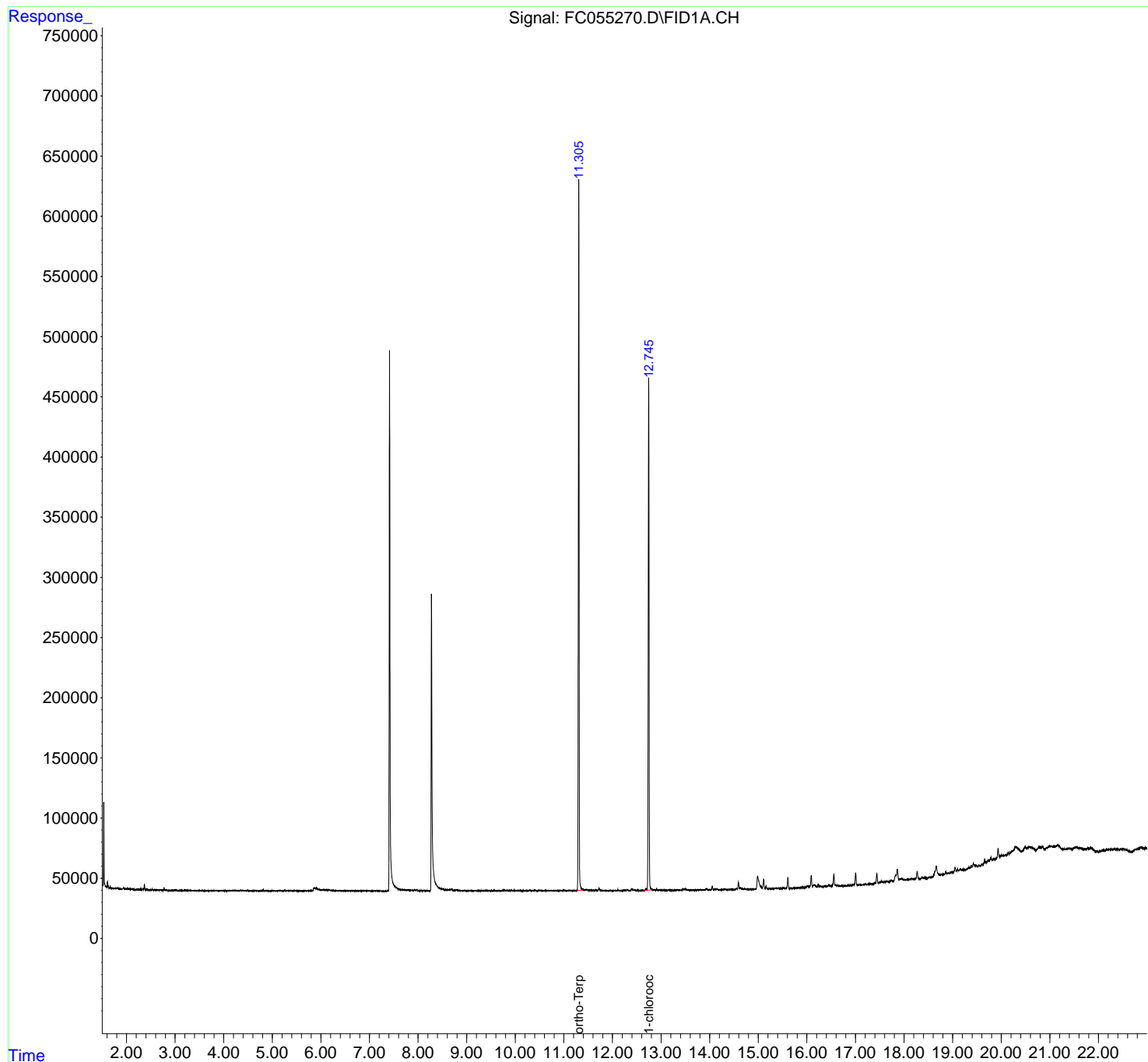
(f)=RT Delta > 1/2 Window

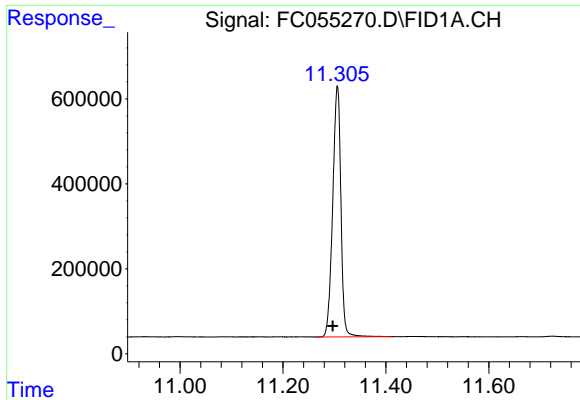
(m)=manual int.

Data Path : Z:\pestpcbsrv\HPCHEM1\FID_C\Data\FC081821AL\
Data File : FC055270.D
Signal(s) : FID1A.CH
Acq On : 18 Aug 2021 17:43
Operator : AJ\MA
Sample : M3441-01
Misc :
ALS Vial : 4 Sample Multiplier: 1

Integration File: autoint1.e
Quant Time: Aug 19 04:55:26 2021
Quant Method : Z:\pestpcbsrv\HPCHEM1\FID_C\Method\Alaphatic EPH 080321.M
Quant Title : GC Extractables
QLast Update : Wed Aug 04 02:08:31 2021
Response via : Initial Calibration
Integrator: ChemStation 6890 Scale Mode: Large solvent peaks clipped

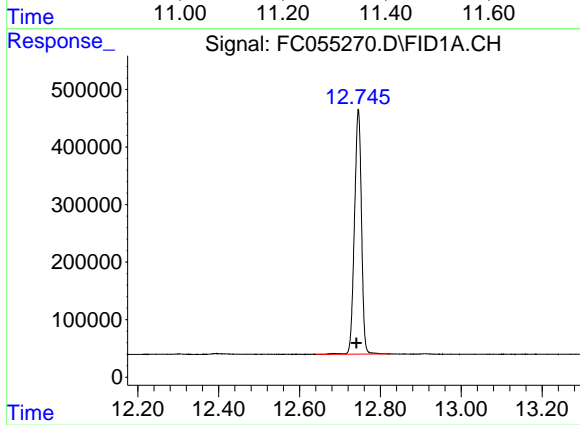
Volume Inj. : 1 ul
Signal Phase : Rxi-1ms
Signal Info : 20M x 0.18mm x 0.18um





#9 ortho-Terphenyl (SURR)

R.T.: 11.306 min
Delta R.T.: 0.009 min
Response: 6526190
Conc: 51.84 ug/ml



#12 1-chlorooctadecane (SURR)

R.T.: 12.745 min
Delta R.T.: 0.005 min
Response: 5124584
Conc: 51.71 ug/ml