

Data Path : Z:\pestpcbsrv\HPCHEM1\FID_C\Data\FC081919AL\
 Data File : FC043006.D
 Signal(s) : FID1A.CH
 Acq On : 20 Aug 2019 6:50
 Operator : DD\AJ
 Sample : K4386-11
 Misc :
 ALS Vial : 23 Sample Multiplier: 1

Instrument :
 FID_C
 ClientSampleId :

Integration File: autoint1.e
 Quant Time: Aug 20 08:06:43 2019
 Quant Method : Z:\pestpcbsrv\HPCHEM1\FID_C\Method\Alaphatic EPH 080819.M
 Quant Title : GC Extractables
 QLast Update : Thu Aug 08 16:36:10 2019
 Response via : Initial Calibration
 Integrator: ChemStation 6890 Scale Mode: Large solvent peaks clipped

Volume Inj. : 1 ul
 Signal Phase : Rxi-1ms
 Signal Info : 20M x 0.18mm x 0.18um

Compound	R.T.	Response	Conc Units

System Monitoring Compounds			
9) S ortho-Terphenyl (SURR)	11.678	5688643	40.047 ug/ml
Spiked Amount	50.000	Recovery	= 80.09%
12) S 1-chlorooctadecane (S...	13.099	4669508	39.339 ug/ml
Spiked Amount	50.000	Recovery	= 78.68%

Target Compounds

(f)=RT Delta > 1/2 Window

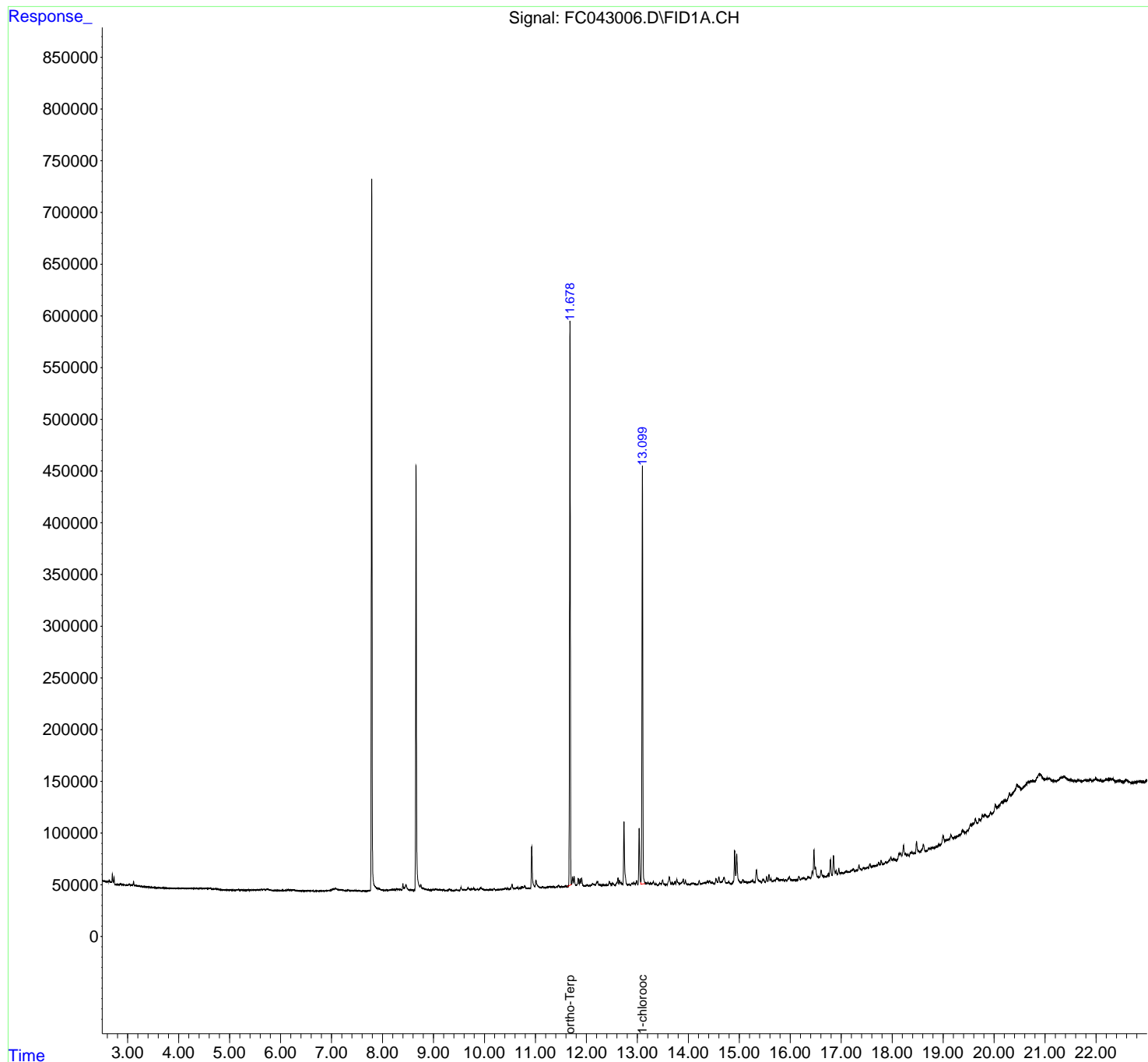
(m)=manual int.

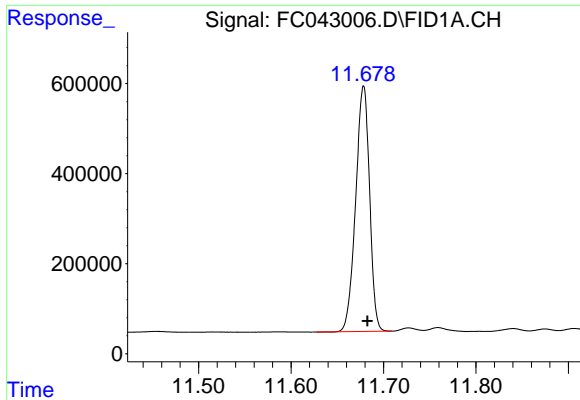
Data Path : Z:\pestpcbsrv\HPCHEM1\FID_C\Data\FC081919AL\
 Data File : FC043006.D
 Signal(s) : FID1A.CH
 Acq On : 20 Aug 2019 6:50
 Operator : DD\AJ
 Sample : K4386-11
 Misc :
 ALS Vial : 23 Sample Multiplier: 1

Instrument :
 FID_C
 ClientSampleId :

Integration File: autoint1.e
 Quant Time: Aug 20 08:06:43 2019
 Quant Method : Z:\pestpcbsrv\HPCHEM1\FID_C\Method\Aliphatic EPH 080819.M
 Quant Title : GC Extractables
 QLast Update : Thu Aug 08 16:36:10 2019
 Response via : Initial Calibration
 Integrator: ChemStation 6890 Scale Mode: Large solvent peaks clipped

Volume Inj. : 1 ul
 Signal Phase : Rxi-1ms
 Signal Info : 20M x 0.18mm x 0.18um

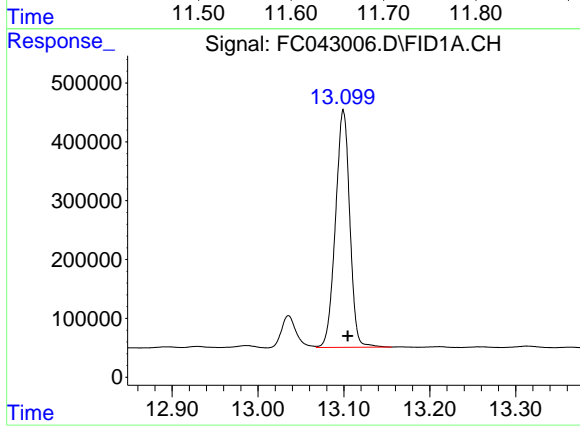




#9 ortho-Terphenyl (SURR)

R.T.: 11.678 min
Delta R.T.: -0.004 min
Response: 5688643
Conc: 40.05 ug/ml

Instrument :
FID_C
ClientSampleId :



#12 1-chlorooctadecane (SURR)

R.T.: 13.099 min
Delta R.T.: -0.005 min
Response: 4669508
Conc: 39.34 ug/ml