

Data Path : Z:\pestpcbsrv\HPCHEM1\FID\_C\Data\FC081921AL\  
 Data File : FC055302.D  
 Signal(s) : FID1A.CH  
 Acq On : 19 Aug 2021 16:10  
 Operator : AJ\MA  
 Sample : 20 PPM ALIPHATIC HC STD  
 Misc :  
 ALS Vial : 2 Sample Multiplier: 1

Integration File: autoint1.e  
 Quant Time: Aug 20 01:29:44 2021  
 Quant Method : Z:\pestpcbsrv\HPCHEM1\FID\_C\Method\Alaphatic EPH 080321.M  
 Quant Title : GC Extractables  
 QLast Update : Wed Aug 04 02:08:31 2021  
 Response via : Initial Calibration  
 Integrator: ChemStation 6890 Scale Mode: Large solvent peaks clipped

Volume Inj. : 1 ul  
 Signal Phase : Rxi-1ms  
 Signal Info : 20M x 0.18mm x 0.18um

Compound	R.T.	Response	Conc Units
-----			
System Monitoring Compounds			
9) S ortho-Terphenyl (SURR)	11.302	2546953	20.230 ug/ml
Spiked Amount	50.000	Recovery	= 40.46%
12) S 1-chlorooctadecane (S...	12.743	2004163	20.222 ug/ml
Spiked Amount	50.000	Recovery	= 40.44%
Target Compounds			
1) T n-Nonane (C9)	3.140	2339124	22.370 ug/ml
2) T n-Decane (C10)	4.189	2414558	22.929 ug/ml
3) T A~Naphthalene (C11.7)	5.755	2499281	23.001 ug/ml
4) T n-Dodecane (C12)	6.189	2491804	22.947 ug/ml
5) T A~2-methylnaphthalene...	6.804	2497044	22.879 ug/ml
6) T n-Tetradecane (C14)	7.973	2507526	22.462 ug/ml
7) T n-Hexadecane (C16)	9.565	2496094	21.885 ug/ml
8) T n-Octadecane (C18)	10.999	2510097	21.286 ug/ml
10) T n-Eicosane (C20)	12.302	2420651	20.618 ug/ml
11) T n-Heneicosane (C21)	12.912	2400530	20.330 ug/ml
13) T n-Docosane (C22)	13.496	2329434	19.944 ug/ml
14) T n-Tetracosane (C24)	14.594	2283485	19.728 ug/ml
15) T n-Hexacosane (C26)	15.611	2168118	19.346 ug/ml
16) T n-Octacosane (C28)	16.558	2123834	19.561 ug/ml
17) T n-Tricontane (C30)	17.442	2118282	20.288 ug/ml
18) T n-Dotriacontane (C32)	18.272	2041616	20.615 ug/ml
19) T n-Tetratriacontane (C34)	19.052	2058104	21.715 ug/mlm
20) T n-Hexatriacontane (C36)	19.790	2118295	23.442 ug/mlm
21) T n-Octatriacontane (C38)	20.493	2136034	24.722 ug/mlm
22) T n-Tetracontane (C40)	21.295	2122934	23.839 ug/ml
-----			

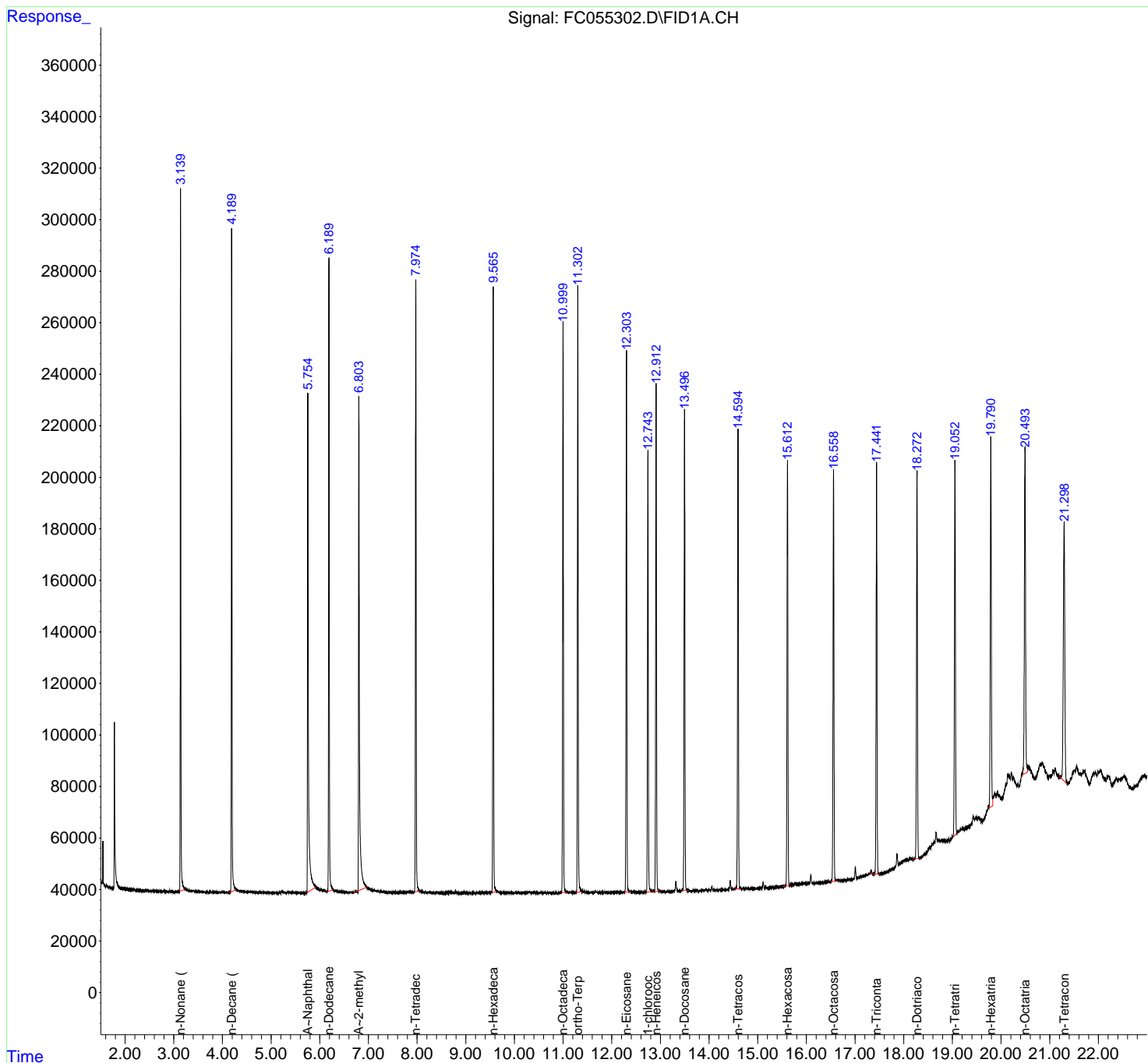
(f)=RT Delta > 1/2 Window

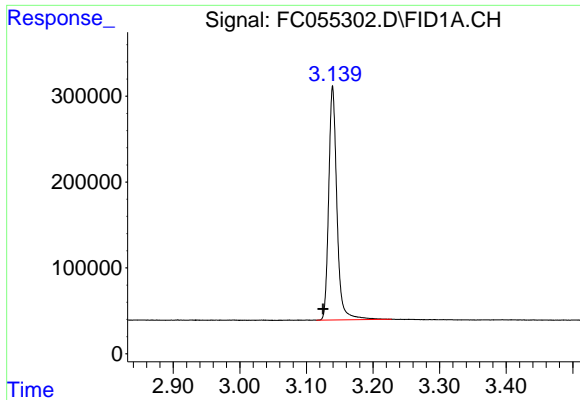
(m)=manual int.

Data Path : Z:\pestpcbsrv\HPCHEM1\FID\_C\Data\FC081921AL\  
 Data File : FC055302.D  
 Signal(s) : FID1A.CH  
 Acq On : 19 Aug 2021 16:10  
 Operator : AJ\MA  
 Sample : 20 PPM ALIPHATIC HC STD  
 Misc :  
 ALS Vial : 2 Sample Multiplier: 1

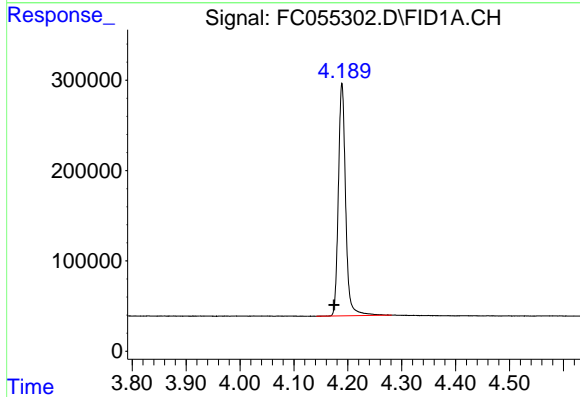
Integration File: autoint1.e  
 Quant Time: Aug 20 01:29:44 2021  
 Quant Method : Z:\pestpcbsrv\HPCHEM1\FID\_C\Method\Aliphatic EPH 080321.M  
 Quant Title : GC Extractables  
 QLast Update : Wed Aug 04 02:08:31 2021  
 Response via : Initial Calibration  
 Integrator: ChemStation 6890 Scale Mode: Large solvent peaks clipped

Volume Inj. : 1 ul  
 Signal Phase : Rxi-1ms  
 Signal Info : 20M x 0.18mm x 0.18um

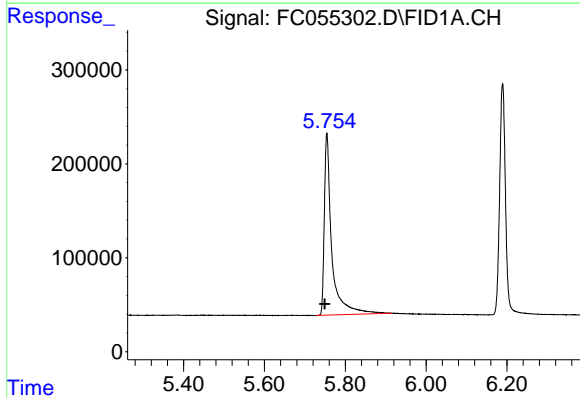




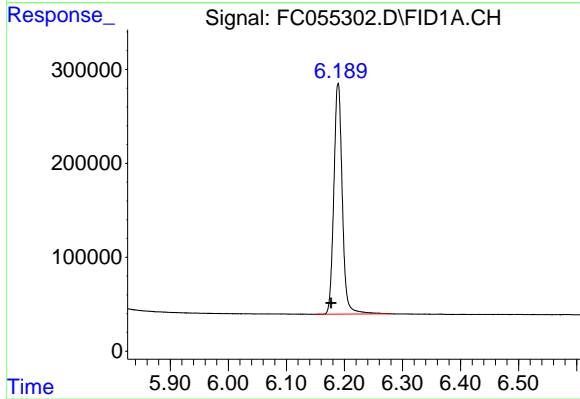
#1 n-Nonane (C9)  
R.T.: 3.140 min  
Delta R.T.: 0.015 min  
Response: 2339124  
Conc: 22.37 ug/ml



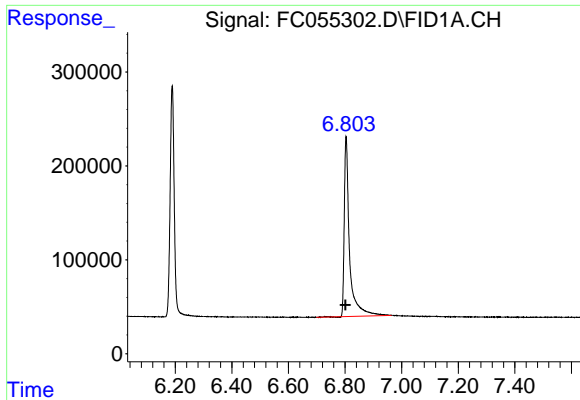
#2 n-Decane (C10)  
R.T.: 4.189 min  
Delta R.T.: 0.015 min  
Response: 2414558  
Conc: 22.93 ug/ml



#3 A~Naphthalene (C11.7)  
R.T.: 5.755 min  
Delta R.T.: 0.006 min  
Response: 2499281  
Conc: 23.00 ug/ml

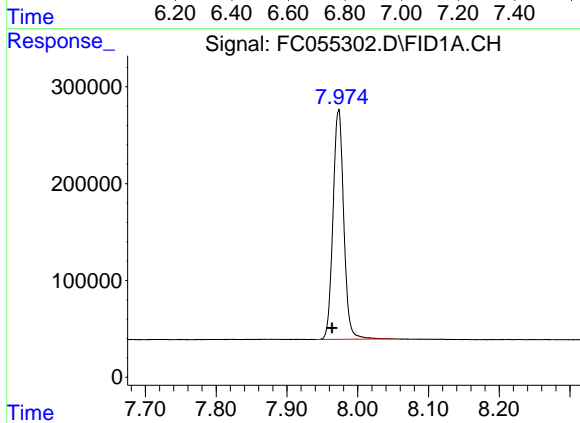


#4 n-Dodecane (C12)  
R.T.: 6.189 min  
Delta R.T.: 0.012 min  
Response: 2491804  
Conc: 22.95 ug/ml



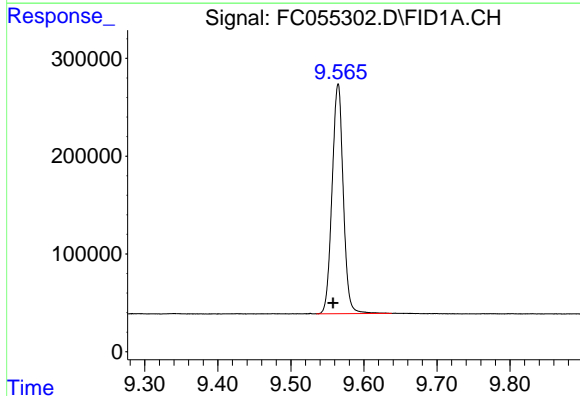
#5 A~2-methylnaphthalene (C12.89)

R.T.: 6.804 min  
 Delta R.T.: 0.004 min  
 Response: 2497044  
 Conc: 22.88 ug/ml



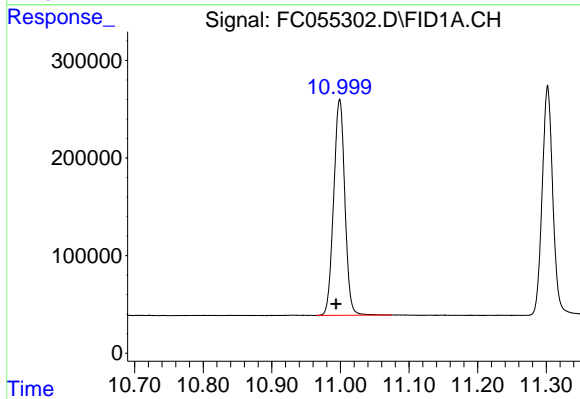
#6 n-Tetradecane (C14)

R.T.: 7.973 min  
 Delta R.T.: 0.009 min  
 Response: 2507526  
 Conc: 22.46 ug/ml



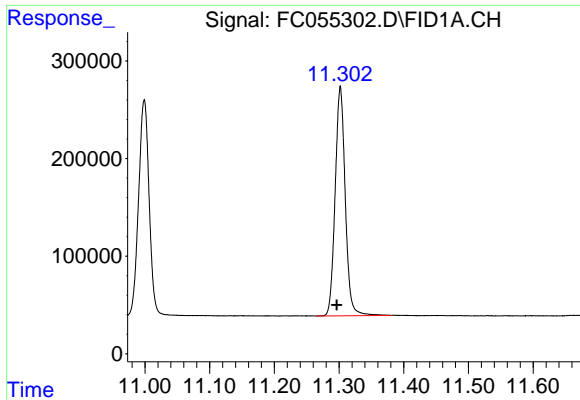
#7 n-Hexadecane (C16)

R.T.: 9.565 min  
 Delta R.T.: 0.007 min  
 Response: 2496094  
 Conc: 21.89 ug/ml



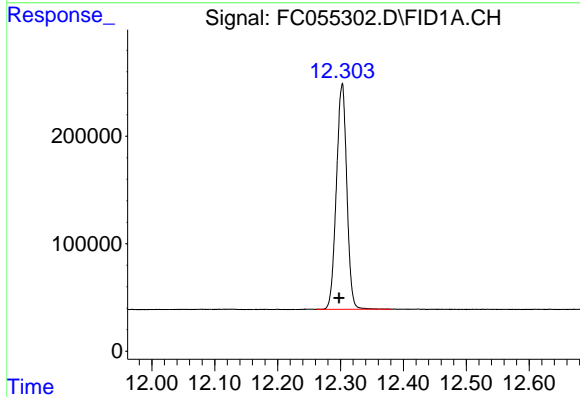
#8 n-Octadecane (C18)

R.T.: 10.999 min  
 Delta R.T.: 0.005 min  
 Response: 2510097  
 Conc: 21.29 ug/ml



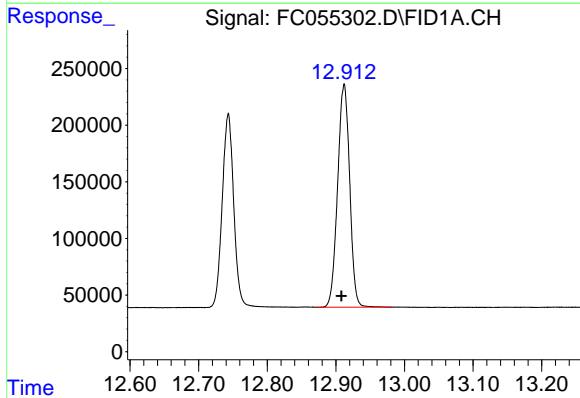
#9 ortho-Terphenyl (SURR)

R.T.: 11.302 min  
 Delta R.T.: 0.006 min  
 Response: 2546953  
 Conc: 20.23 ug/ml



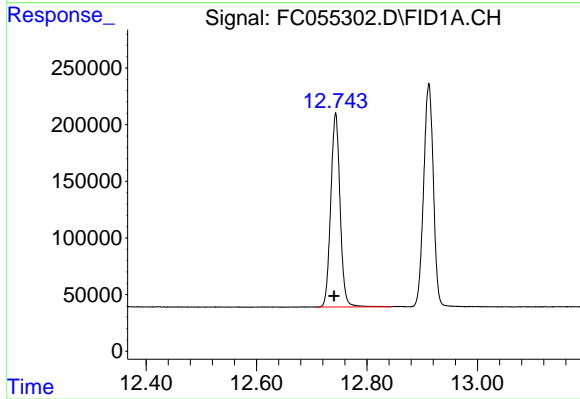
#10 n-Eicosane (C20)

R.T.: 12.302 min  
 Delta R.T.: 0.005 min  
 Response: 2420651  
 Conc: 20.62 ug/ml



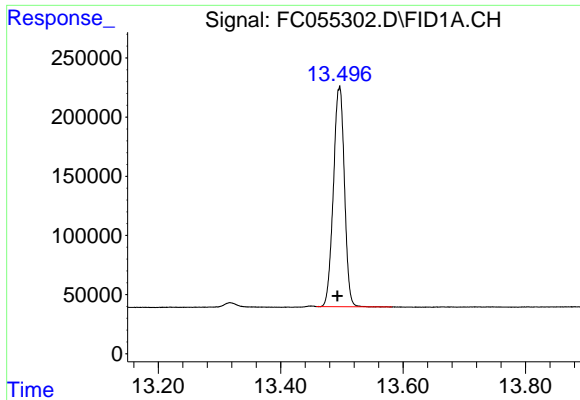
#11 n-Heneicosane (C21)

R.T.: 12.912 min  
 Delta R.T.: 0.004 min  
 Response: 2400530  
 Conc: 20.33 ug/ml

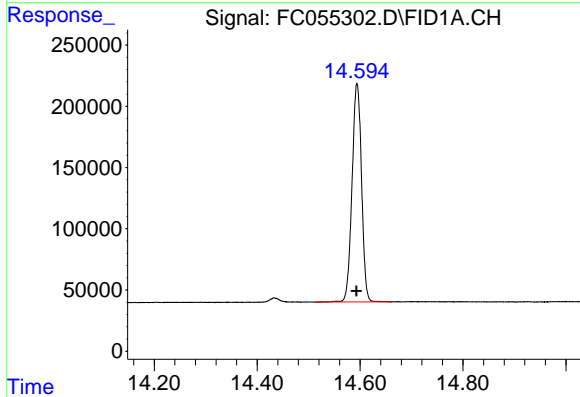


#12 1-chlorooctadecane (SURR)

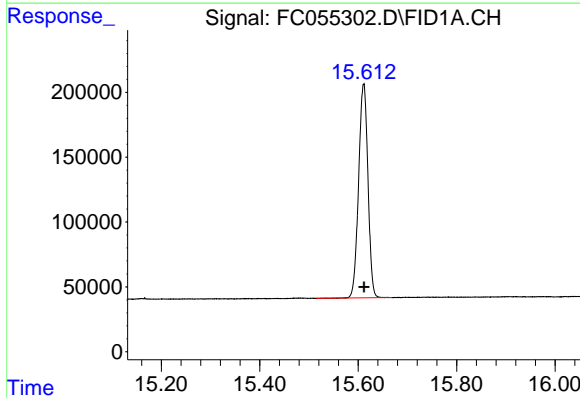
R.T.: 12.743 min  
 Delta R.T.: 0.002 min  
 Response: 2004163  
 Conc: 20.22 ug/ml



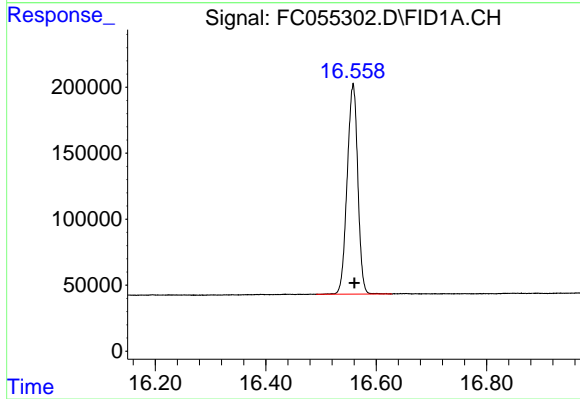
#13 n-Docosane (C22)  
R.T.: 13.496 min  
Delta R.T.: 0.003 min  
Response: 2329434  
Conc: 19.94 ug/ml



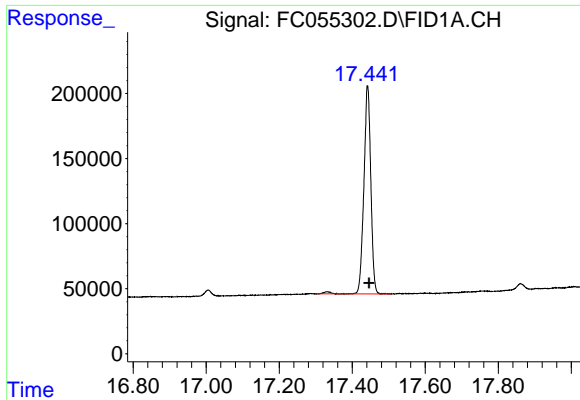
#14 n-Tetracosane (C24)  
R.T.: 14.594 min  
Delta R.T.: 0.002 min  
Response: 2283485  
Conc: 19.73 ug/ml



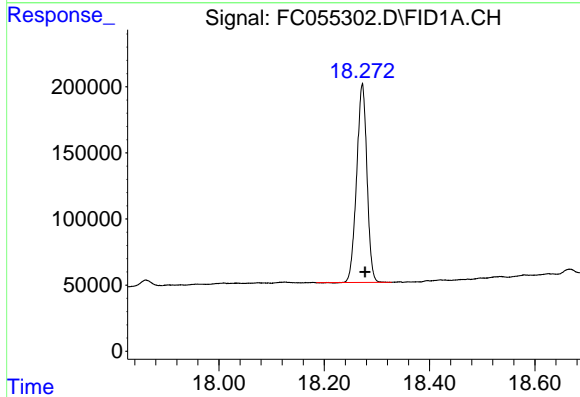
#15 n-Hexacosane (C26)  
R.T.: 15.611 min  
Delta R.T.: 0.000 min  
Response: 2168118  
Conc: 19.35 ug/ml



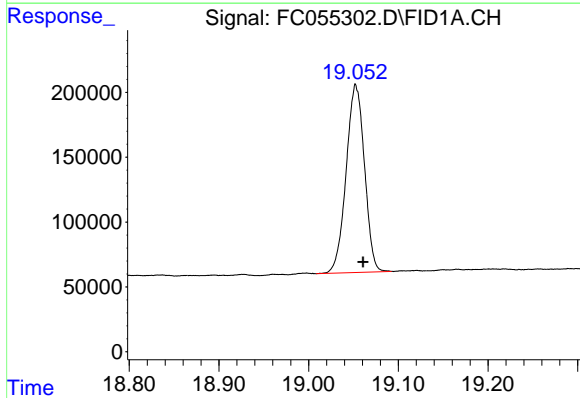
#16 n-Octacosane (C28)  
R.T.: 16.558 min  
Delta R.T.: -0.003 min  
Response: 2123834  
Conc: 19.56 ug/ml



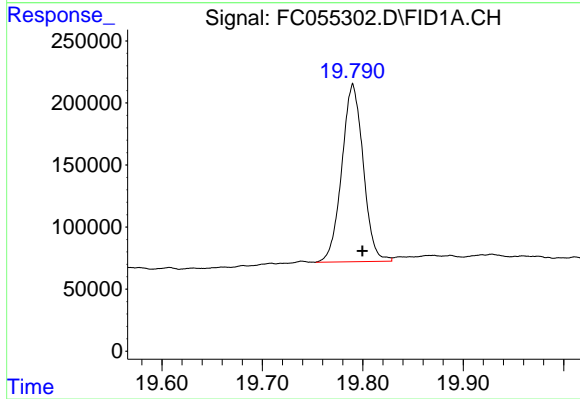
#17 n-Tricontane (C30)  
R.T.: 17.442 min  
Delta R.T.: -0.004 min  
Response: 2118282  
Conc: 20.29 ug/ml



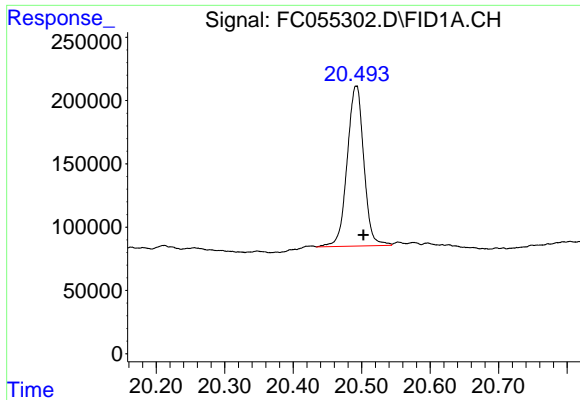
#18 n-Dotriacontane (C32)  
R.T.: 18.272 min  
Delta R.T.: -0.005 min  
Response: 2041616  
Conc: 20.62 ug/ml



#19 n-Tetratriacontane (C34)  
R.T.: 19.052 min  
Delta R.T.: -0.009 min  
Response: 2058104  
Conc: 21.71 ug/ml m

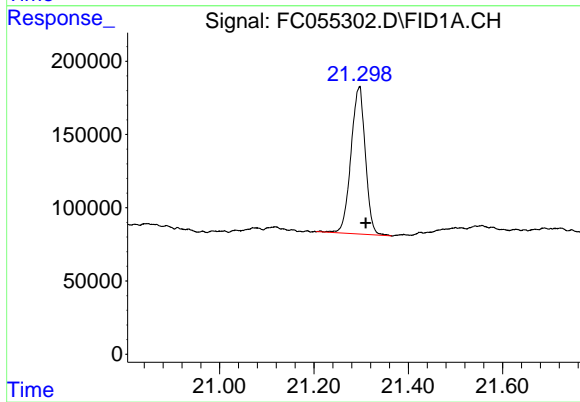


#20 n-Hexatriacontane (C36)  
R.T.: 19.790 min  
Delta R.T.: -0.010 min  
Response: 2118295  
Conc: 23.44 ug/ml m



#21 n-Octatriacontane (C38)

R.T.: 20.493 min  
Delta R.T.: -0.009 min  
Response: 2136034  
Conc: 24.72 ug/ml m



#22 n-Tetracontane (C40)

R.T.: 21.295 min  
Delta R.T.: -0.016 min  
Response: 2122934  
Conc: 23.84 ug/ml