

Data Path : Z:\pestpcbsrv\HPCHEM1\FID_C\Data\FC081921AL\
 Data File : FC055308.D
 Signal(s) : FID1A.CH
 Acq On : 19 Aug 2021 20:25
 Operator : AJ\MA
 Sample : M3466-01
 Misc :
 ALS Vial : 11 Sample Multiplier: 1

Integration File: autoint1.e
 Quant Time: Aug 20 01:31:24 2021
 Quant Method : Z:\pestpcbsrv\HPCHEM1\FID_C\Method\Alaphatic EPH 080321.M
 Quant Title : GC Extractables
 QLast Update : Wed Aug 04 02:08:31 2021
 Response via : Initial Calibration
 Integrator: ChemStation 6890 Scale Mode: Large solvent peaks clipped

Volume Inj. : 1 ul
 Signal Phase : Rxi-1ms
 Signal Info : 20M x 0.18mm x 0.18um

Compound	R.T.	Response	Conc Units

System Monitoring Compounds			
9) S ortho-Terphenyl (SURR)	11.306	3367901	26.751 ug/mlm
Spiked Amount	50.000	Recovery	= 53.50%
12) S 1-chlorooctadecane (S...	12.747	2818904	28.443 ug/mlm
Spiked Amount	50.000	Recovery	= 56.89%

Target Compounds

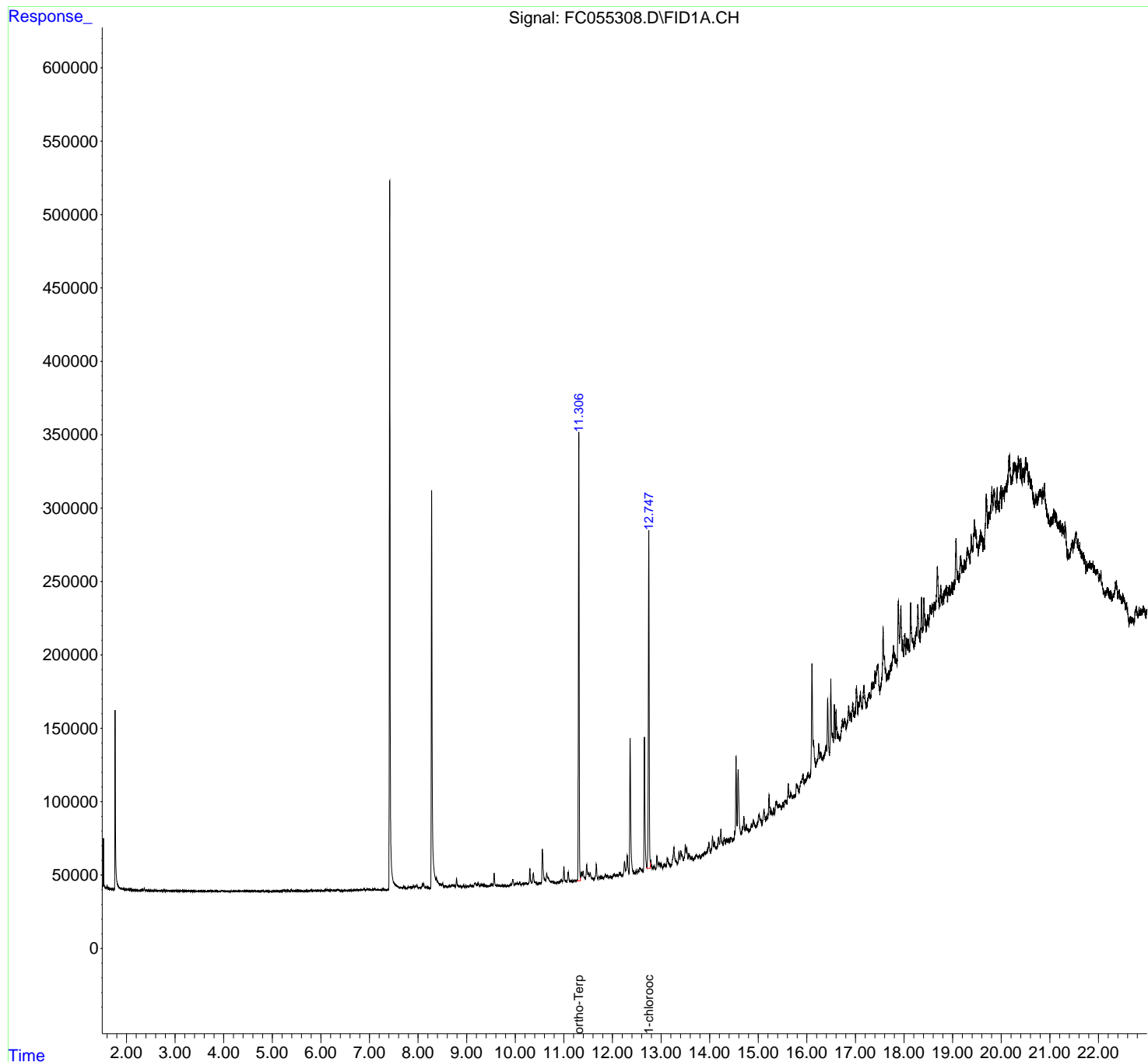
(f)=RT Delta > 1/2 Window

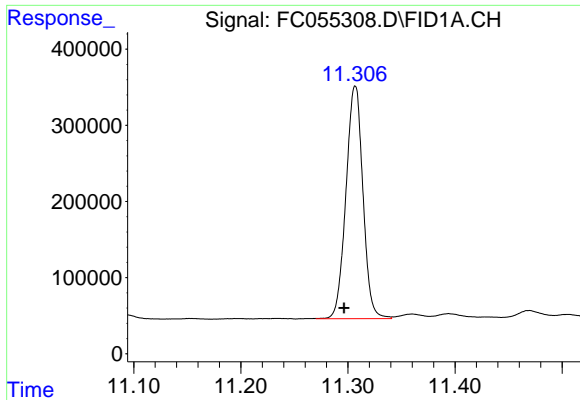
(m)=manual int.

Data Path : Z:\pestpcbsrv\HPCHEM1\FID_C\Data\FC081921AL\
Data File : FC055308.D
Signal(s) : FID1A.CH
Acq On : 19 Aug 2021 20:25
Operator : AJ\MA
Sample : M3466-01
Misc :
ALS Vial : 11 Sample Multiplier: 1

Integration File: autoint1.e
Quant Time: Aug 20 01:31:24 2021
Quant Method : Z:\pestpcbsrv\HPCHEM1\FID_C\Method\Alaphatic EPH 080321.M
Quant Title : GC Extractables
QLast Update : Wed Aug 04 02:08:31 2021
Response via : Initial Calibration
Integrator: ChemStation 6890 Scale Mode: Large solvent peaks clipped

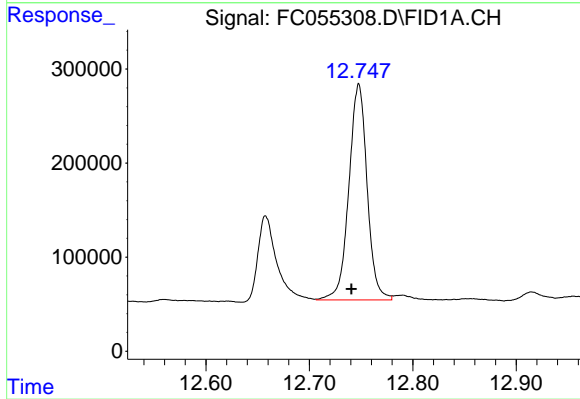
Volume Inj. : 1 ul
Signal Phase : Rxi-1ms
Signal Info : 20M x 0.18mm x 0.18um





#9 ortho-Terphenyl (SURR)

R.T.: 11.306 min
Delta R.T.: 0.010 min
Response: 3367901
Conc: 26.75 ug/ml m



#12 1-chlorooctadecane (SURR)

R.T.: 12.747 min
Delta R.T.: 0.007 min
Response: 2818904
Conc: 28.44 ug/ml m