

Data Path : Z:\pestpcbsrv\HPCHEM1\FID_C\Data\FC082120AL\
 Data File : FC049156.D
 Signal(s) : FID1A.CH
 Acq On : 21 Aug 2020 19:25
 Operator : DD\AJ
 Sample : L3746-06
 Misc :
 ALS Vial : 12 Sample Multiplier: 1

Integration File: autoint1.e
 Quant Time: Aug 22 01:24:12 2020
 Quant Method : Z:\pestpcbsrv\HPCHEM1\FID_C\Method\Alaphatic EPH 080720.M
 Quant Title : GC Extractables
 QLast Update : Sat Aug 08 02:38:47 2020
 Response via : Initial Calibration
 Integrator: ChemStation 6890 Scale Mode: Large solvent peaks clipped

Volume Inj. : 1 ul
 Signal Phase : Rxi-1ms
 Signal Info : 20M x 0.18mm x 0.18um

Compound	R.T.	Response	Conc Units

System Monitoring Compounds			
9) S ortho-Terphenyl (SURR)	11.681	6087389	51.234 ug/ml
Spiked Amount	50.000	Recovery	= 102.47%
12) S 1-chlorooctadecane (S...	13.112	4876414	50.128 ug/ml
Spiked Amount	50.000	Recovery	= 100.26%

Target Compounds

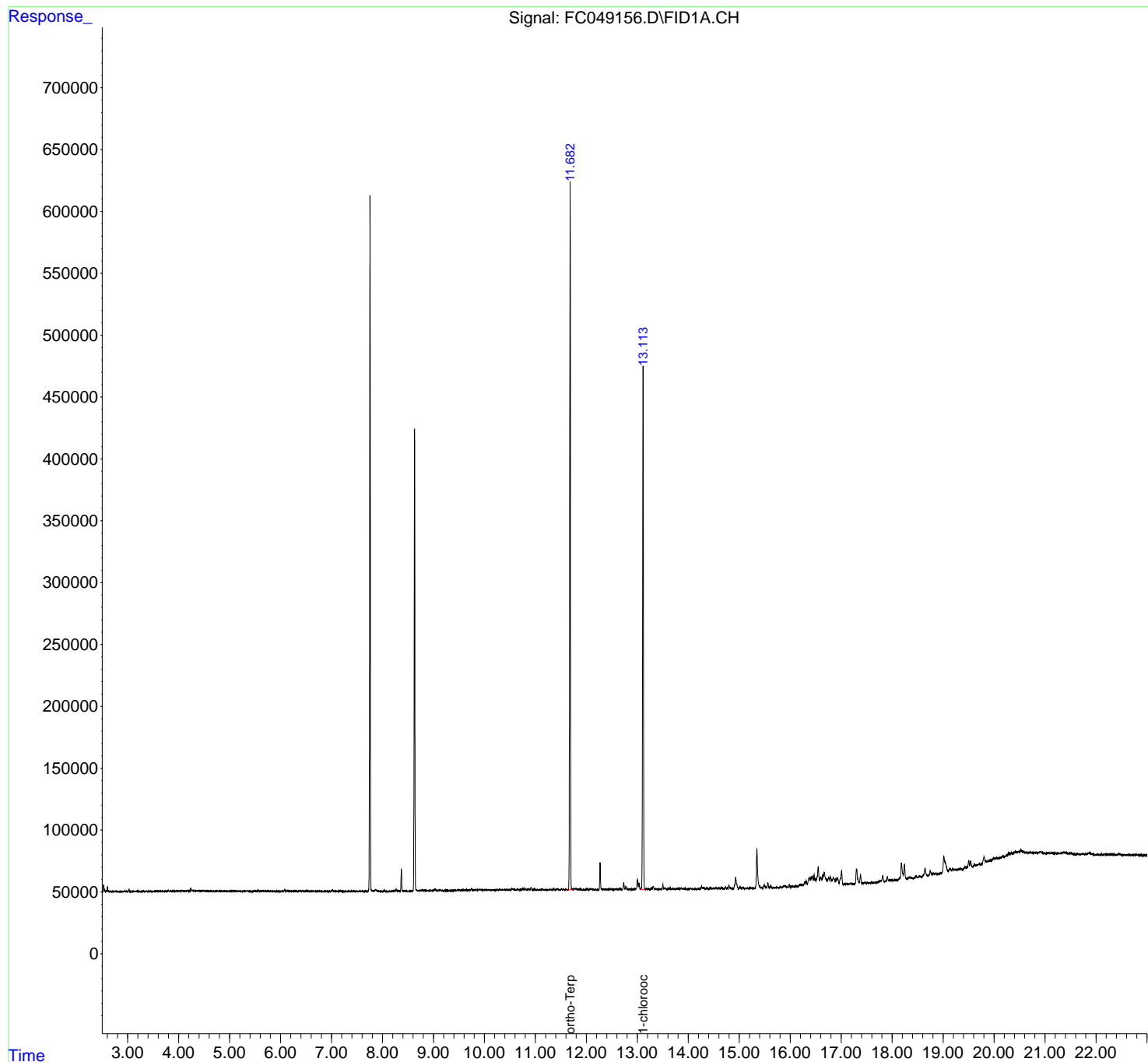
(f)=RT Delta > 1/2 Window

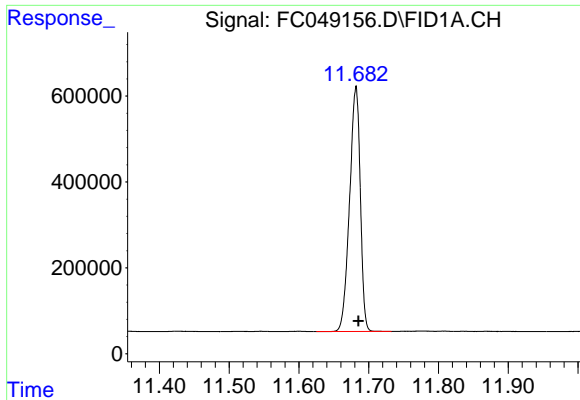
(m)=manual int.

Data Path : Z:\pestpcbsrv\HPCHEM1\FID_C\Data\FC082120AL\
Data File : FC049156.D
Signal(s) : FID1A.CH
Acq On : 21 Aug 2020 19:25
Operator : DD\AJ
Sample : L3746-06
Misc :
ALS Vial : 12 Sample Multiplier: 1

Integration File: autoint1.e
Quant Time: Aug 22 01:24:12 2020
Quant Method : Z:\pestpcbsrv\HPCHEM1\FID_C\Method\Aliphatic EPH 080720.M
Quant Title : GC Extractables
QLast Update : Sat Aug 08 02:38:47 2020
Response via : Initial Calibration
Integrator: ChemStation 6890 Scale Mode: Large solvent peaks clipped

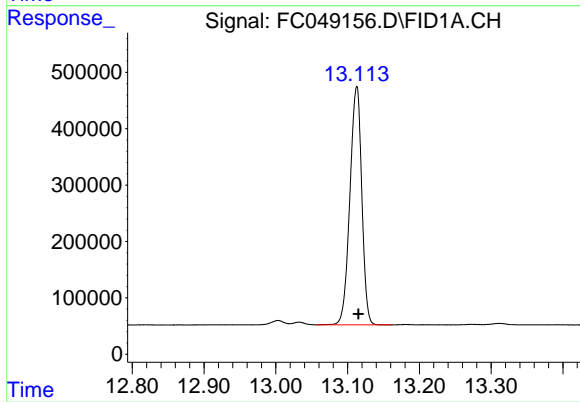
Volume Inj. : 1 ul
Signal Phase : Rxi-1ms
Signal Info : 20M x 0.18mm x 0.18um





#9 ortho-Terphenyl (SURR)

R.T.: 11.681 min
Delta R.T.: -0.004 min
Response: 6087389
Conc: 51.23 ug/ml



#12 1-chlorooctadecane (SURR)

R.T.: 13.112 min
Delta R.T.: -0.002 min
Response: 4876414
Conc: 50.13 ug/ml