

Data Path : Z:\pestpcbsrv\HPCHEM1\FID_C\Data\FC082218AL\
 Data File : FC036028.D
 Signal(s) : FID1A.CH
 Acq On : 22 Aug 2018 21:36
 Operator : AJ\SJ
 Sample : J4573-06
 Misc :
 ALS Vial : 11 Sample Multiplier: 1

Integration File: autoint1.e
 Quant Time: Aug 23 04:05:27 2018
 Quant Method : Z:\PESTPCBSRV\HPCHEM1\FID_C\Method\Alaphatic EPH 082118.M
 Quant Title : GC Extractables
 QLast Update : Tue Aug 21 16:09:01 2018
 Response via : Initial Calibration
 Integrator: ChemStation 6890 Scale Mode: Large solvent peaks clipped

Volume Inj. : 1 ul
 Signal Phase : Rxi-lms
 Signal Info : 20M x 0.18mm x 0.18um

Compound	R.T.	Response	Conc Units

System Monitoring Compounds			
12) S 1-chlorooctadecane (S...	12.858	5248906	64.316 ug/ml
Spiked Amount	50.000	Recovery	= 128.63%

Target Compounds

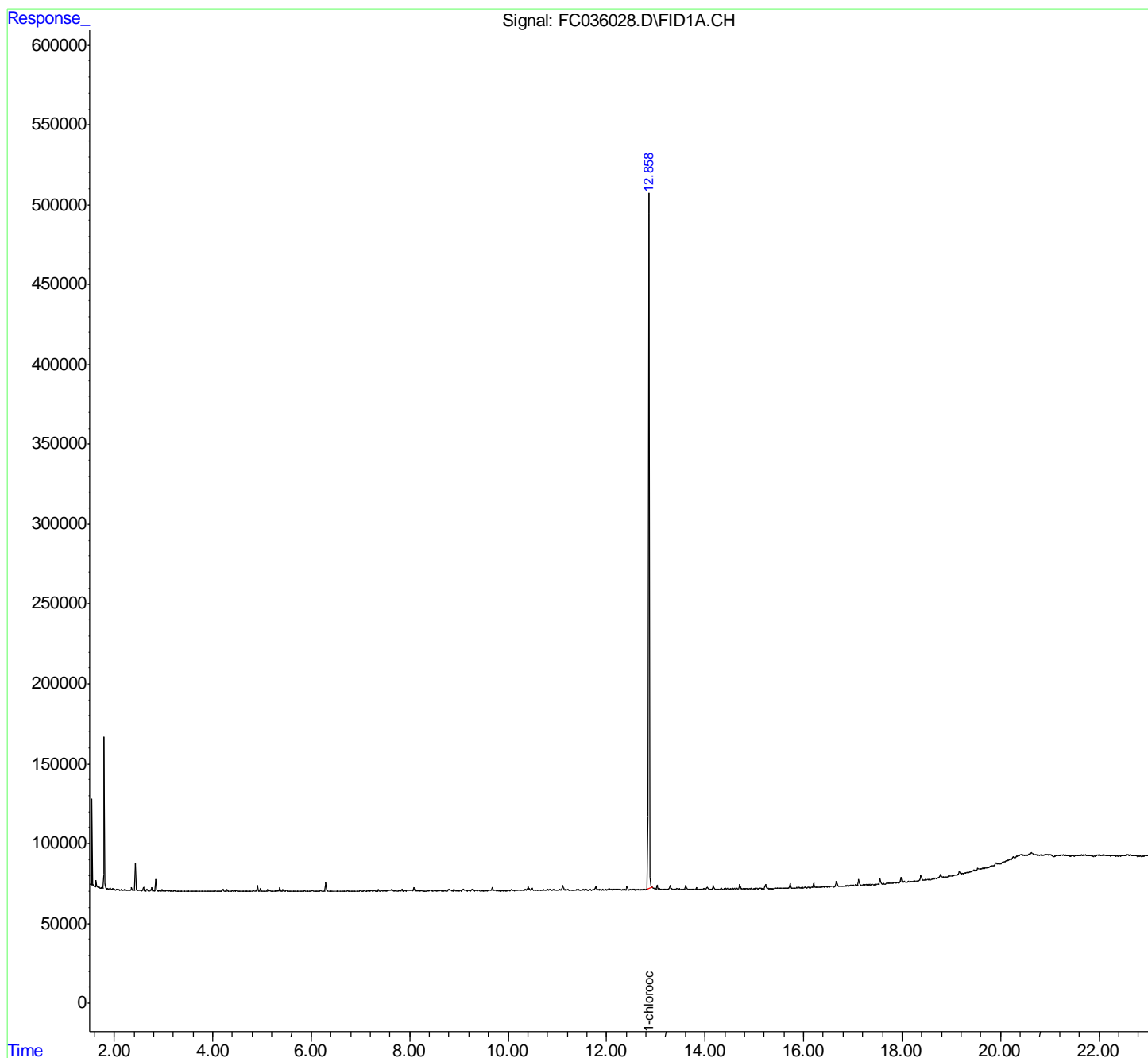
(f)=RT Delta > 1/2 Window

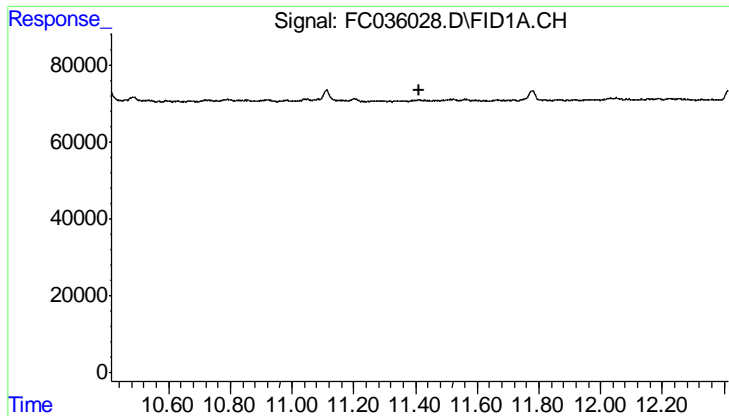
(m)=manual int.

Data Path : Z:\pestpcbsrv\HPCHEM1\FID_C\Data\FC082218AL\
Data File : FC036028.D
Signal(s) : FID1A.CH
Acq On : 22 Aug 2018 21:36
Operator : AJ\SJ
Sample : J4573-06
Misc :
ALS Vial : 11 Sample Multiplier: 1

Integration File: autoint1.e
Quant Time: Aug 23 04:05:27 2018
Quant Method : Z:\PESTPCBSRV\HPCHEM1\FID_C\Method\Alaphatic EPH 082118.M
Quant Title : GC Extractables
QLast Update : Tue Aug 21 16:09:01 2018
Response via : Initial Calibration
Integrator: ChemStation 6890 Scale Mode: Large solvent peaks clipped

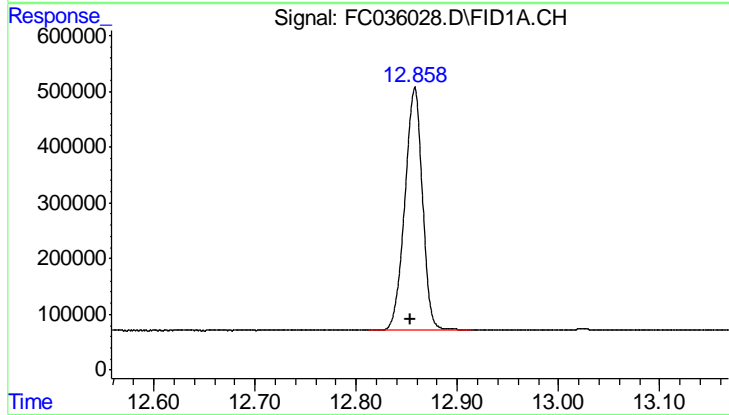
Volume Inj. : 1 ul
Signal Phase : Rxi-lms
Signal Info : 20M x 0.18mm x 0.18um





#9 ortho-Terphenyl (SURR)

R.T.: 0.000 min
Exp R.T.: 11.414 min
Response: 0
Conc: N.D.



#12 1-chlorooctadecane (SURR)

R.T.: 12.858 min
Delta R.T.: 0.004 min
Response: 5248906
Conc: 64.32 ug/ml