

Data Path : Z:\pestpcbsrv\HPCHEM1\FID_C\Data\FC082420AL\
 Data File : FC049175.D
 Signal(s) : FID1A.CH
 Acq On : 24 Aug 2020 20:50
 Operator : DD\AJ
 Sample : L3747-01MSD
 Misc :
 ALS Vial : 12 Sample Multiplier: 1

Instrument :
 FID_C
 ClientSampled :
 340MSD

Manual Integrations
 APPROVED

Ankita
 8/25/2020 3:21:44 PM

Integration File: autoint1.e
 Quant Time: Aug 25 02:55:17 2020
 Quant Method : Z:\pestpcbsrv\HPCHEM1\FID_C\Method\Alaphatic EPH 080720.M
 Quant Title : GC Extractables
 QLast Update : Sat Aug 08 02:38:47 2020
 Response via : Initial Calibration
 Integrator: ChemStation 6890 Scale Mode: Large solvent peaks clipped

Volume Inj. : 1 ul
 Signal Phase : Rxi-1ms
 Signal Info : 20M x 0.18mm x 0.18um

Compound	R.T.	Response	Conc Units

System Monitoring Compounds			
9) S ortho-Terphenyl (SURR)	11.704	6052570	50.941 ug/mlm
Spiked Amount	50.000	Recovery	= 101.88%
12) S 1-chlorooctadecane (S...	13.118	1576467	16.205 ug/mlm
Spiked Amount	50.000	Recovery	= 32.41%
Target Compounds			
1) T n-Nonane (C9)	3.405	1554288	14.902 ug/ml
2) T n-Decane (C10)	4.486	2662390	25.383 ug/ml
3) T A~Naphthalene (C11.7)	6.089	271322	2.294 ug/mlm
4) T n-Dodecane (C12)	6.516	4378806	41.284 ug/ml
5) T A~2-methylnaphthalene...	7.150	11839	0.098 ug/mlm
6) T n-Tetradecane (C14)	8.317	5444756	51.704 ug/ml
7) T n-Hexadecane (C16)	9.922	6767269	64.473 ug/ml
8) T n-Octadecane (C18)	11.386	4809239	43.776 ug/mlm
10) T n-Eicosane (C20)	12.687	7087081	63.686 ug/mlm
11) T n-Heneicosane (C21)	13.286	4018456	35.973 ug/mlm
13) T n-Docosane (C22)	13.887	18734524	166.676 ug/mlm
14) T n-Tetracosane (C24)	14.946	27976404	246.080 ug/mlm
15) T n-Hexacosane (C26)	15.988	3014418	26.346 ug/mlm
16) T n-Octacosane (C28)	16.918	8343021	71.713 ug/mlm
17) T n-Tricontane (C30)	17.806	9744405	84.295 ug/mlm
18) T n-Dotriacontane (C32)	18.639	8232519	76.139 ug/mlm
19) T n-Tetratriacontane (C34)	19.434	2458836	23.707 ug/mlm
20) T n-Hexatriacontane (C36)	20.136	3374116	33.935 ug/mlm
21) T n-Octatriacontane (C38)	20.896	5696794	60.244 ug/mlm
22) T n-Tetracontane (C40)	21.836	2858264	29.940 ug/mlm

(f)=RT Delta > 1/2 Window

(m)=manual int.

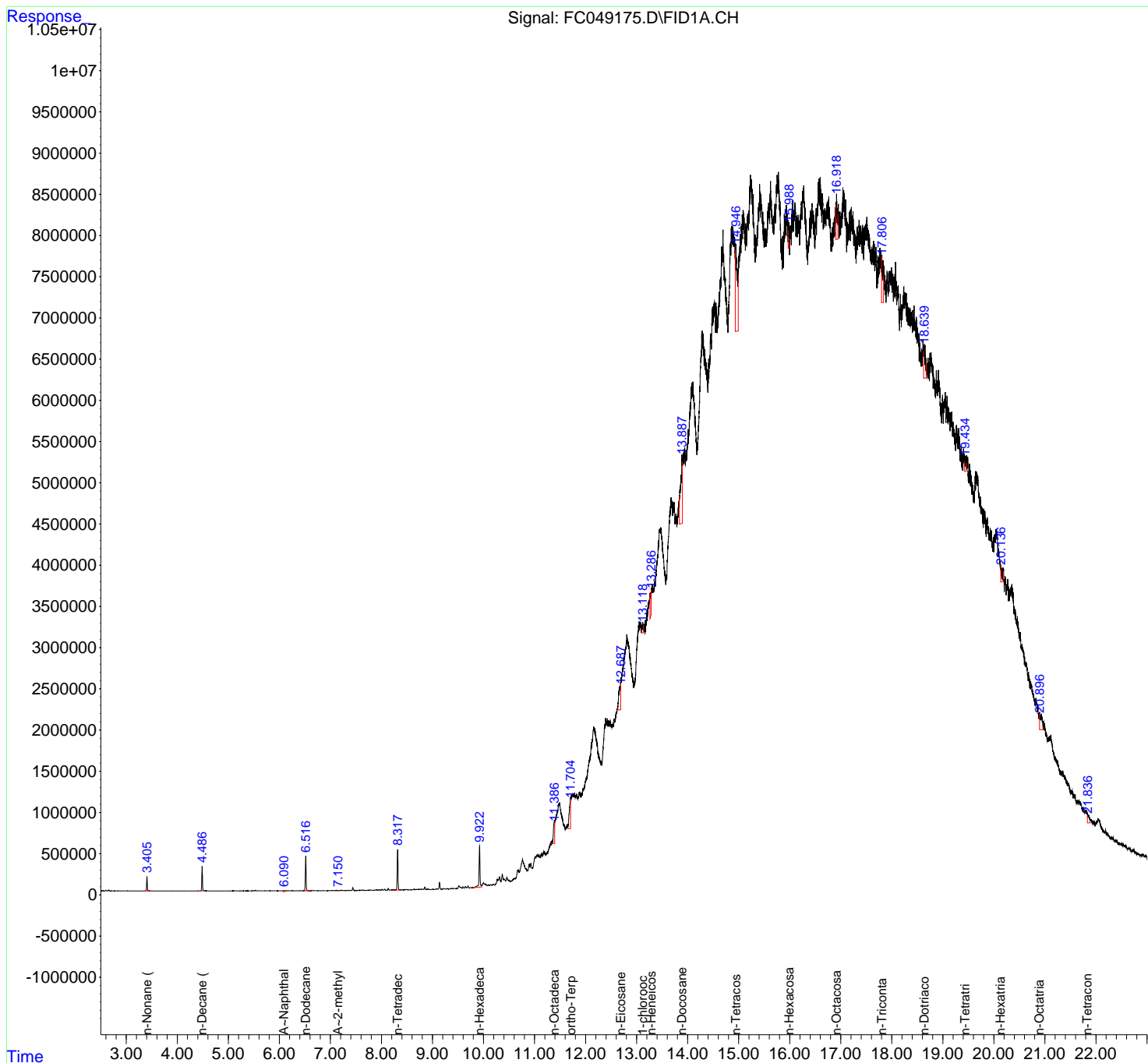
Data Path : Z:\pestpcbsrv\HPCHEM1\FID_C\Data\FC082420AL\
 Data File : FC049175.D
 Signal(s) : FID1A.CH
 Acq On : 24 Aug 2020 20:50
 Operator : DD\AJ
 Sample : L3747-01MSD
 Misc :
 ALS Vial : 12 Sample Multiplier: 1

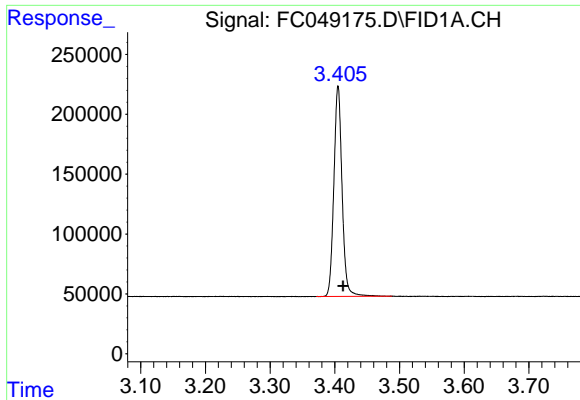
Instrument :
 FID_C
 ClientSampled :
 340MSD

Manual Integrations
APPROVED
 Ankita
 8/25/2020 3:21:44 PM

Integration File: autoint1.e
 Quant Time: Aug 25 02:55:17 2020
 Quant Method : Z:\pestpcbsrv\HPCHEM1\FID_C\Method\Alaphatic EPH 080720.M
 Quant Title : GC Extractables
 QLast Update : Sat Aug 08 02:38:47 2020
 Response via : Initial Calibration
 Integrator: ChemStation 6890 Scale Mode: Large solvent peaks clipped

Volume Inj. : 1 ul
 Signal Phase : Rxi-1ms
 Signal Info : 20M x 0.18mm x 0.18um

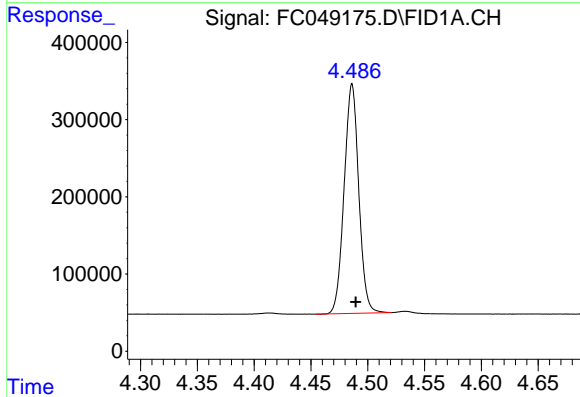




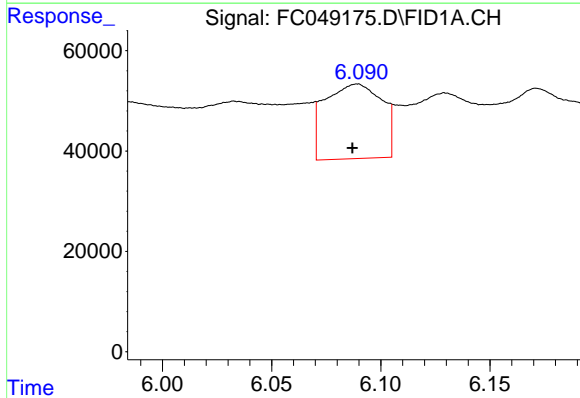
#1 n-Nonane (C9)
 R.T.: 3.405 min
 Delta R.T.: -0.008 min
 Response: 1554288
 Conc: 14.90 ug/ml

Instrument :
 FID_C
 ClientSampled :
 340MSD

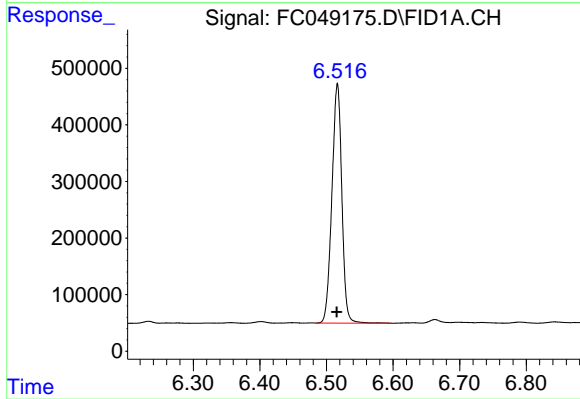
Manual Integrations
 APPROVED
 Ankita
 8/25/2020 3:21:44 PM



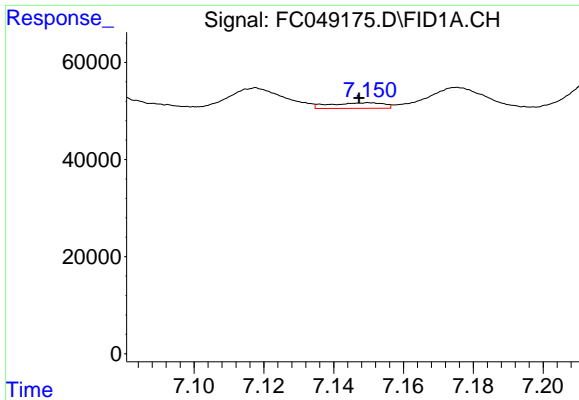
#2 n-Decane (C10)
 R.T.: 4.486 min
 Delta R.T.: -0.003 min
 Response: 2662390
 Conc: 25.38 ug/ml



#3 A~Naphthalene (C11.7)
 R.T.: 6.089 min
 Delta R.T.: 0.002 min
 Response: 271322
 Conc: 2.29 ug/ml m



#4 n-Dodecane (C12)
 R.T.: 6.516 min
 Delta R.T.: 0.001 min
 Response: 4378806
 Conc: 41.28 ug/ml

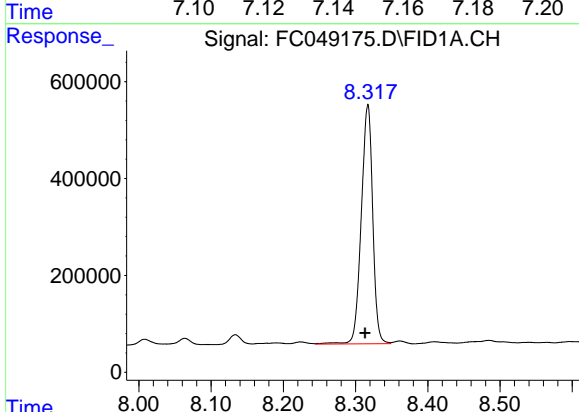


#5 A~2-methylnaphthalene (C12.89)

R.T.: 7.150 min
 Delta R.T.: 0.002 min
 Response: 11839
 Conc: 0.10 ug/ml m

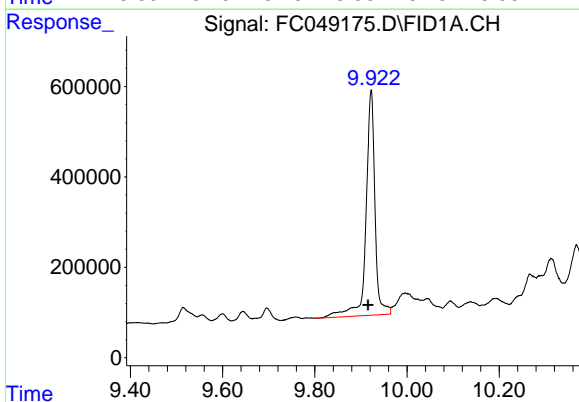
Instrument :
 FID_C
 ClientSampled :
 340MSD

Manual Integrations
APPROVED
 Ankita
 8/25/2020 3:21:44 PM



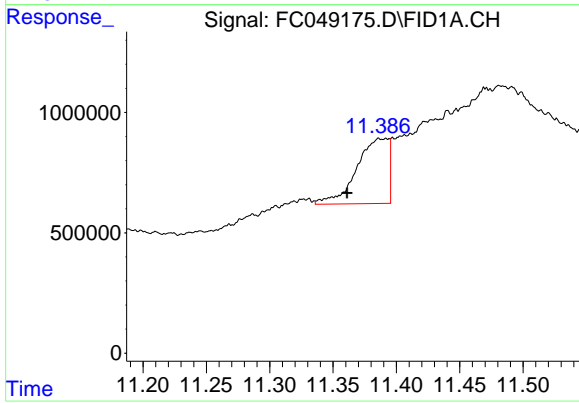
#6 n-Tetradecane (C14)

R.T.: 8.317 min
 Delta R.T.: 0.003 min
 Response: 5444756
 Conc: 51.70 ug/ml



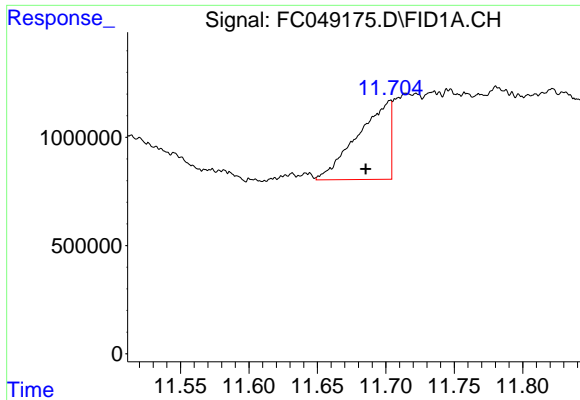
#7 n-Hexadecane (C16)

R.T.: 9.922 min
 Delta R.T.: 0.007 min
 Response: 6767269
 Conc: 64.47 ug/ml



#8 n-Octadecane (C18)

R.T.: 11.386 min
 Delta R.T.: 0.025 min
 Response: 4809239
 Conc: 43.78 ug/ml m

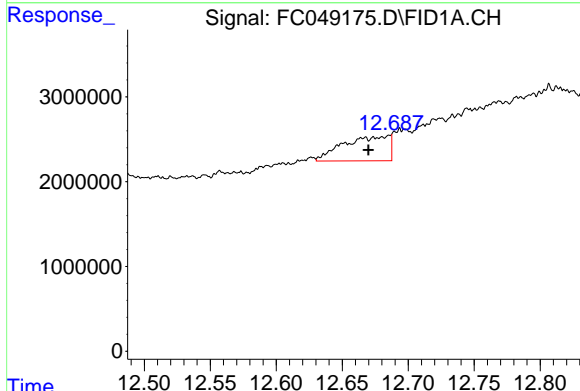


#9 ortho-Terphenyl (SURR)

R.T.: 11.704 min
 Delta R.T.: 0.018 min
 Response: 6052570
 Conc: 50.94 ug/ml m

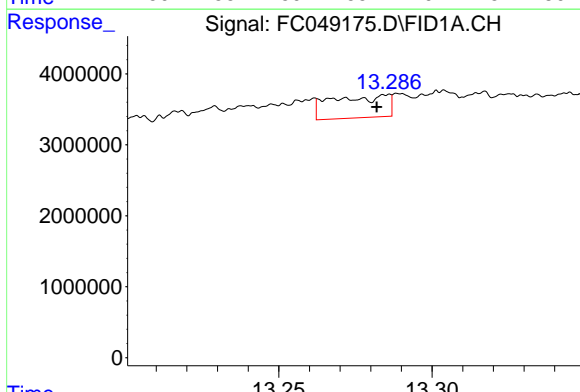
Instrument :
 FID_C
 ClientSampled :
 340MSD

Manual Integrations
 APPROVED
 Ankita
 8/25/2020 3:21:44 PM



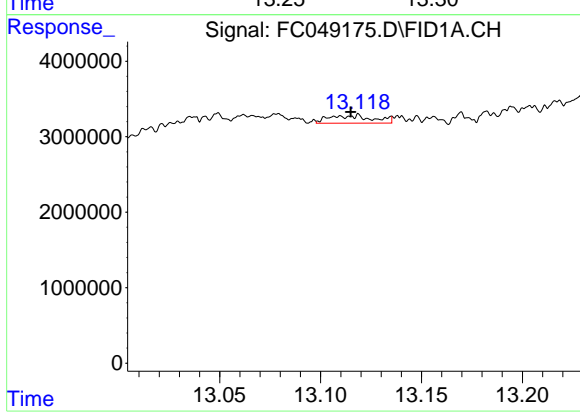
#10 n-Eicosane (C20)

R.T.: 12.687 min
 Delta R.T.: 0.018 min
 Response: 7087081
 Conc: 63.69 ug/ml m



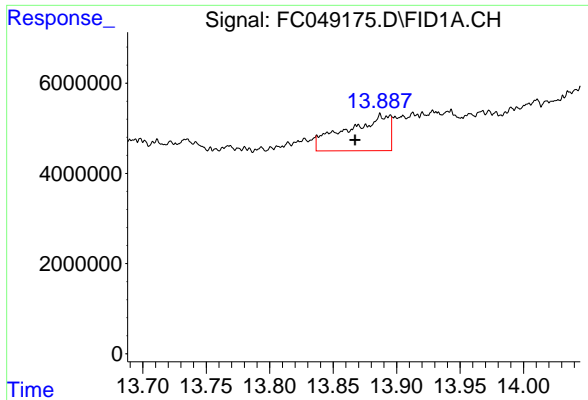
#11 n-Heneicosane (C21)

R.T.: 13.286 min
 Delta R.T.: 0.004 min
 Response: 4018456
 Conc: 35.97 ug/ml m



#12 1-chlorooctadecane (SURR)

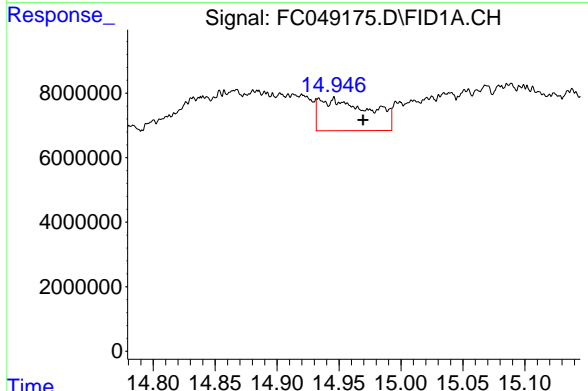
R.T.: 13.118 min
 Delta R.T.: 0.004 min
 Response: 1576467
 Conc: 16.21 ug/ml m



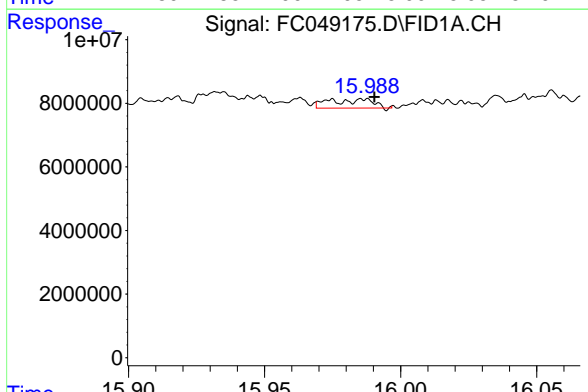
#13 n-Docosane (C22)
 R.T.: 13.887 min
 Delta R.T.: 0.019 min
 Response: 18734524
 Conc: 166.68 ug/ml m

Instrument :
 FID_C
 ClientSampled :
 340MSD

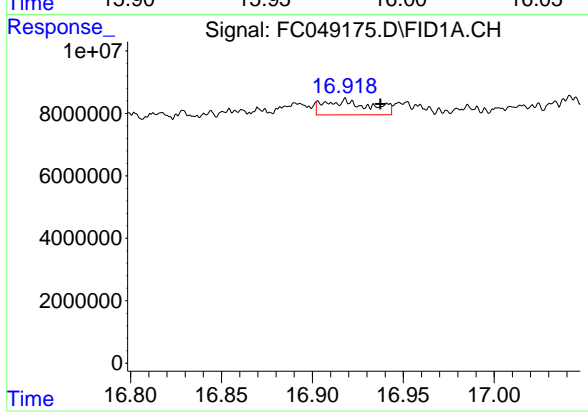
Manual Integrations
 APPROVED
 Ankita
 8/25/2020 3:21:44 PM



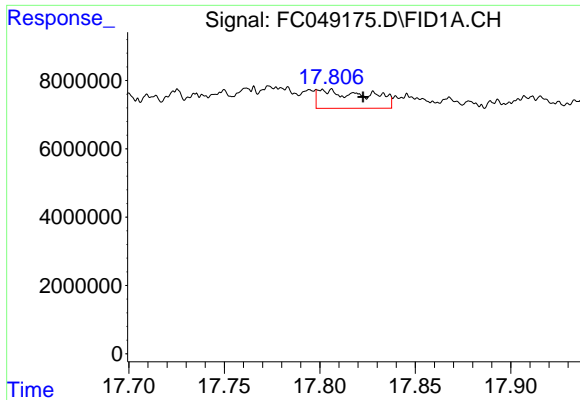
#14 n-Tetracosane (C24)
 R.T.: 14.946 min
 Delta R.T.: -0.024 min
 Response: 27976404
 Conc: 246.08 ug/ml m



#15 n-Hexacosane (C26)
 R.T.: 15.988 min
 Delta R.T.: -0.003 min
 Response: 3014418
 Conc: 26.35 ug/ml m



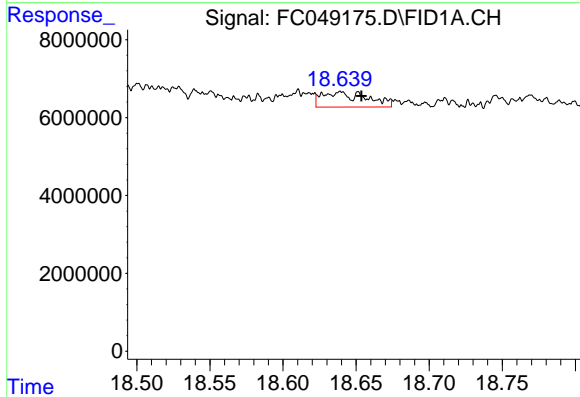
#16 n-Octacosane (C28)
 R.T.: 16.918 min
 Delta R.T.: -0.020 min
 Response: 8343021
 Conc: 71.71 ug/ml m



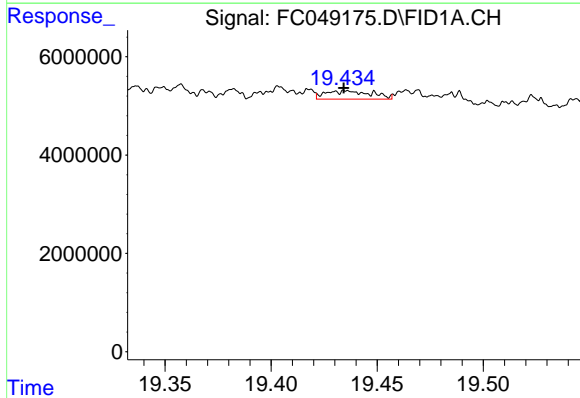
#17 n-Tricontane (C30)
 R.T.: 17.806 min
 Delta R.T.: -0.017 min
 Response: 9744405
 Conc: 84.30 ug/ml m

Instrument :
 FID_C
 ClientSampled :
 340MSD

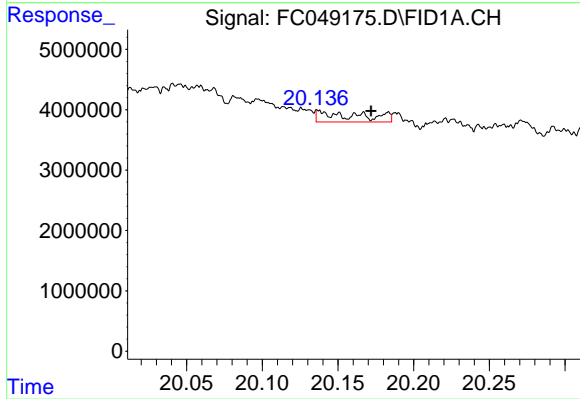
Manual Integrations
 APPROVED
 Ankita
 8/25/2020 3:21:44 PM



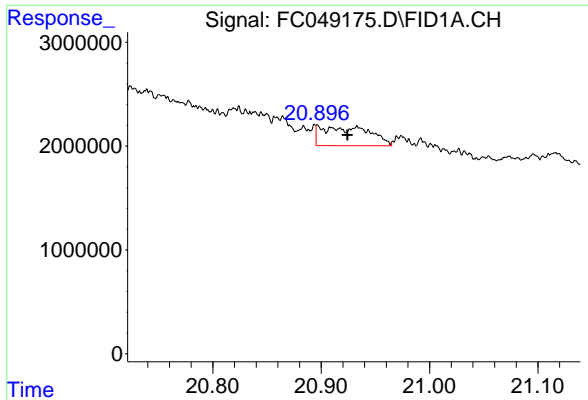
#18 n-Dotriacontane (C32)
 R.T.: 18.639 min
 Delta R.T.: -0.015 min
 Response: 8232519
 Conc: 76.14 ug/ml m



#19 n-Tetratriacontane (C34)
 R.T.: 19.434 min
 Delta R.T.: 0.000 min
 Response: 2458836
 Conc: 23.71 ug/ml m



#20 n-Hexatriacontane (C36)
 R.T.: 20.136 min
 Delta R.T.: -0.036 min
 Response: 3374116
 Conc: 33.93 ug/ml m



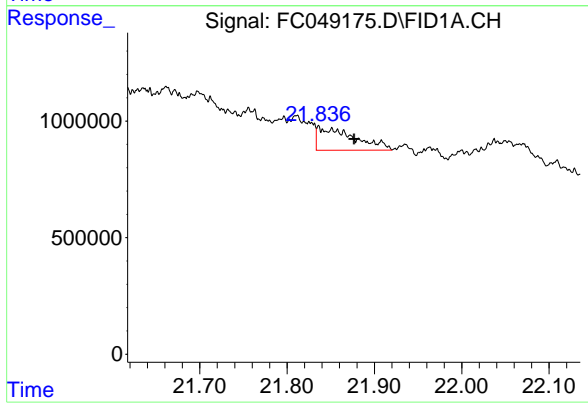
#21 n-Octatriacontane (C38)

R.T.: 20.896 min
Delta R.T.: -0.028 min
Response: 5696794
Conc: 60.24 ug/ml m

Instrument :
FID_C
ClientSampled :
340MSD

Manual Integrations
APPROVED

Ankita
8/25/2020 3:21:44 PM



#22 n-Tetracontane (C40)

R.T.: 21.836 min
Delta R.T.: -0.041 min
Response: 2858264
Conc: 29.94 ug/ml m