

Data Path : Z:\pestpcbsrv\HPCHEM1\FID_C\Data\FC082521AL\
 Data File : FC055375.D
 Signal(s) : FID1A.CH
 Acq On : 25 Aug 2021 14:10
 Operator : AJ\MA
 Sample : PB138710BL
 Misc :
 ALS Vial : 3 Sample Multiplier: 1

Integration File: autoint1.e
 Quant Time: Aug 26 01:10:12 2021
 Quant Method : Z:\pestpcbsrv\HPCHEM1\FID_C\Method\Alaphatic EPH 080321.M
 Quant Title : GC Extractables
 QLast Update : Wed Aug 04 02:08:31 2021
 Response via : Initial Calibration
 Integrator: ChemStation 6890 Scale Mode: Large solvent peaks clipped

Volume Inj. : 1 ul
 Signal Phase : Rxi-1ms
 Signal Info : 20M x 0.18mm x 0.18um

Compound	R.T.	Response	Conc Units

System Monitoring Compounds			
9) S ortho-Terphenyl (SURR)	11.300	3521146	27.968 ug/ml
Spiked Amount	50.000	Recovery	= 55.94%
12) S 1-chlorooctadecane (S...	12.740	2781102	28.062 ug/ml
Spiked Amount	50.000	Recovery	= 56.12%

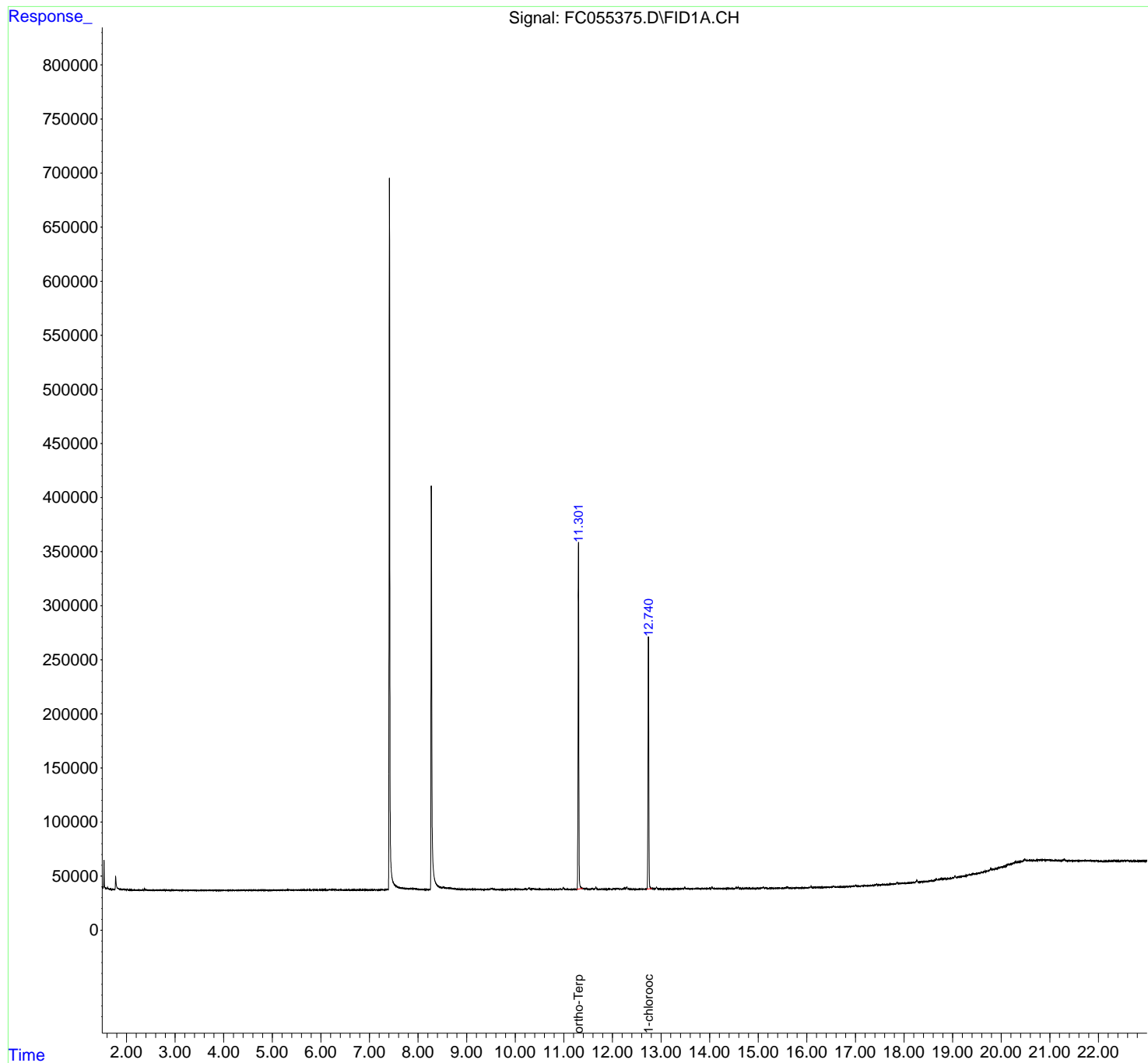
Target Compounds

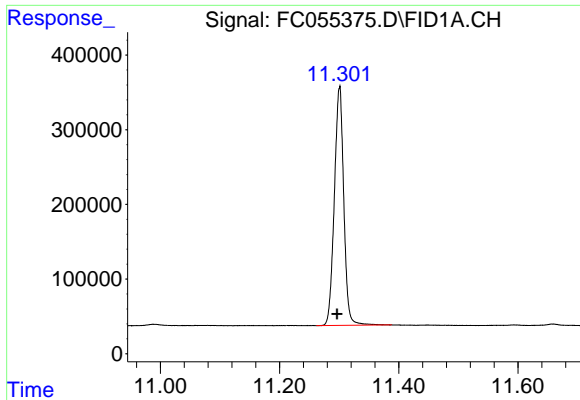
(f)=RT Delta > 1/2 Window (m)=manual int.

Data Path : Z:\pestpcbsrv\HPCHEM1\FID_C\Data\FC082521AL\
Data File : FC055375.D
Signal(s) : FID1A.CH
Acq On : 25 Aug 2021 14:10
Operator : AJ\MA
Sample : PB138710BL
Misc :
ALS Vial : 3 Sample Multiplier: 1

Integration File: autoint1.e
Quant Time: Aug 26 01:10:12 2021
Quant Method : Z:\pestpcbsrv\HPCHEM1\FID_C\Method\Alaphatic EPH 080321.M
Quant Title : GC Extractables
QLast Update : Wed Aug 04 02:08:31 2021
Response via : Initial Calibration
Integrator: ChemStation 6890 Scale Mode: Large solvent peaks clipped

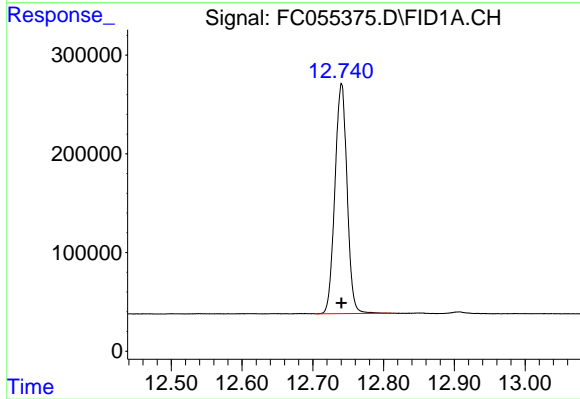
Volume Inj. : 1 ul
Signal Phase : Rxi-1ms
Signal Info : 20M x 0.18mm x 0.18um





#9 ortho-Terphenyl (SURR)

R.T.: 11.300 min
Delta R.T.: 0.004 min
Response: 3521146
Conc: 27.97 ug/ml



#12 1-chlorooctadecane (SURR)

R.T.: 12.740 min
Delta R.T.: 0.000 min
Response: 2781102
Conc: 28.06 ug/ml