

Data Path : Z:\pestpcbsrv\HPCHEM1\FID_C\Data\FC082620AL\
 Data File : FC049260.D
 Signal(s) : FID1A.CH
 Acq On : 27 Aug 2020 6:10
 Operator : DD\AJ
 Sample : L3794-01
 Misc :
 ALS Vial : 27 Sample Multiplier: 1

Instrument :
 FID_C
 ClientSampleId :

Integration File: autoint1.e
 Quant Time: Aug 27 07:36:07 2020
 Quant Method : Z:\pestpcbsrv\HPCHEM1\FID_C\Method\Alaphatic EPH 080720.M
 Quant Title : GC Extractables
 QLast Update : Sat Aug 08 02:38:47 2020
 Response via : Initial Calibration
 Integrator: ChemStation 6890 Scale Mode: Large solvent peaks clipped

Volume Inj. : 1 ul
 Signal Phase : Rxi-1ms
 Signal Info : 20M x 0.18mm x 0.18um

Compound	R.T.	Response	Conc Units

System Monitoring Compounds			
9) S ortho-Terphenyl (SURR)	11.676	1659388	13.966 ug/ml
Spiked Amount	50.000	Recovery	= 27.93%
12) S 1-chlorooctadecane (S...	13.109	1356917	13.949 ug/ml
Spiked Amount	50.000	Recovery	= 27.90%
Target Compounds			
6) T n-Tetradecane (C14)	8.369f	169525	1.610 ug/ml
10) T n-Eicosane (C20)	12.735f	149199	1.341 ug/ml

(f)=RT Delta > 1/2 Window

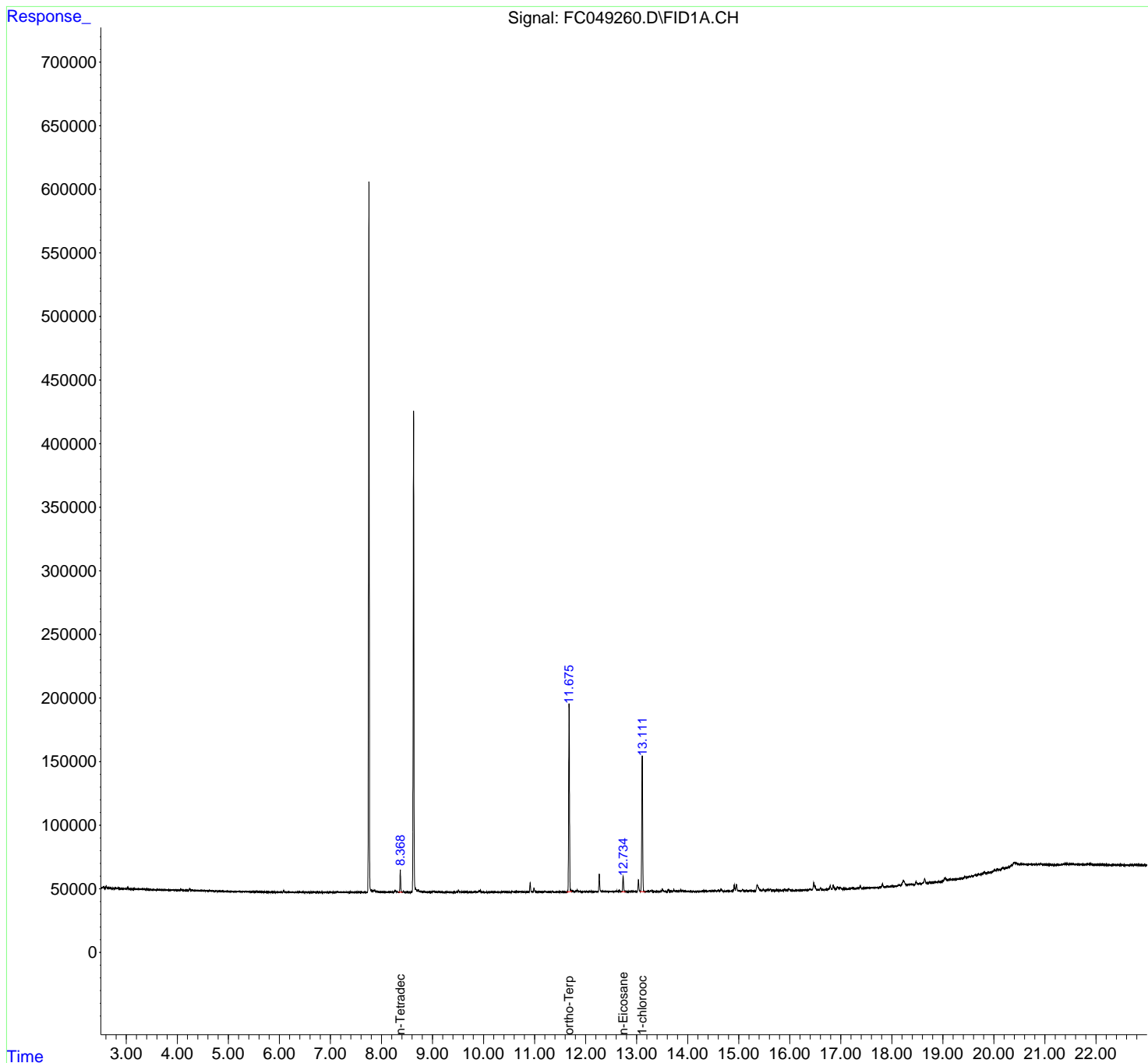
(m)=manual int.

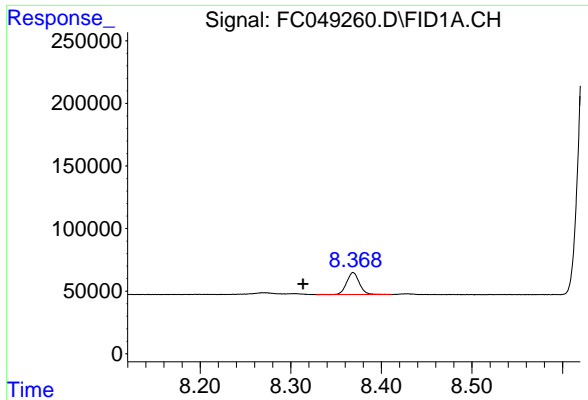
Data Path : Z:\pestpcbsrv\HPCHEM1\FID_C\Data\FC082620AL\
 Data File : FC049260.D
 Signal(s) : FID1A.CH
 Acq On : 27 Aug 2020 6:10
 Operator : DD\AJ
 Sample : L3794-01
 Misc :
 ALS Vial : 27 Sample Multiplier: 1

Instrument :
 FID_C
 ClientSampleId :

Integration File: autoint1.e
 Quant Time: Aug 27 07:36:07 2020
 Quant Method : Z:\pestpcbsrv\HPCHEM1\FID_C\Method\Alaphatic EPH 080720.M
 Quant Title : GC Extractables
 QLast Update : Sat Aug 08 02:38:47 2020
 Response via : Initial Calibration
 Integrator: ChemStation 6890 Scale Mode: Large solvent peaks clipped

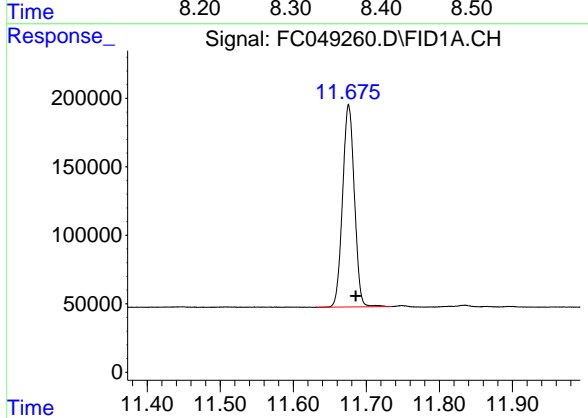
Volume Inj. : 1 ul
 Signal Phase : Rxi-1ms
 Signal Info : 20M x 0.18mm x 0.18um



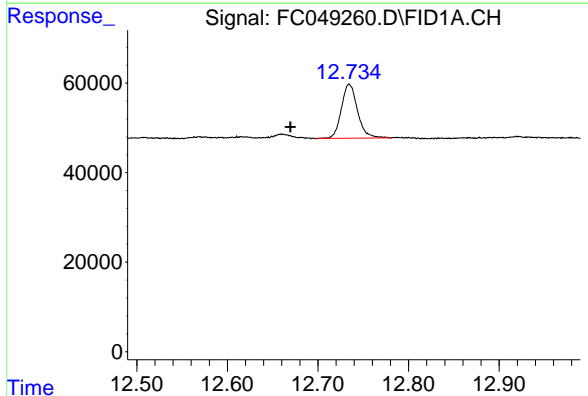


#6 n-Tetradecane (C14)
R.T.: 8.369 min
Delta R.T.: 0.055 min
Response: 169525
Conc: 1.61 ug/ml

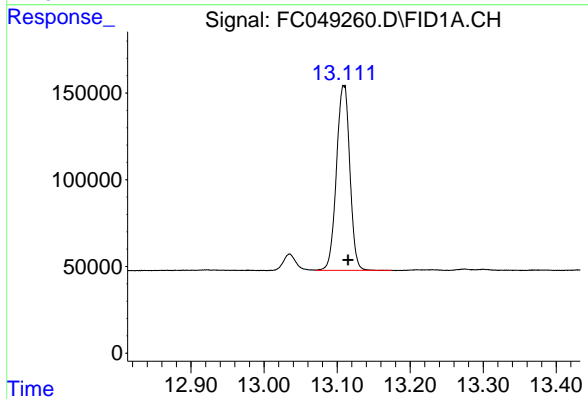
Instrument :
FID_C
ClientSampled :



#9 ortho-Terphenyl (SURR)
R.T.: 11.676 min
Delta R.T.: -0.010 min
Response: 1659388
Conc: 13.97 ug/ml



#10 n-Eicosane (C20)
R.T.: 12.735 min
Delta R.T.: 0.065 min
Response: 149199
Conc: 1.34 ug/ml



#12 1-chlorooctadecane (SURR)
R.T.: 13.109 min
Delta R.T.: -0.006 min
Response: 1356917
Conc: 13.95 ug/ml