

Data Path : Z:\pestpcbsrv\HPCHEM1\FID\_C\Data\FC082621AL\  
 Data File : FC055416.D  
 Signal(s) : FID1A.CH  
 Acq On : 27 Aug 2021 4:57  
 Operator : AJ\MA  
 Sample : 20 PPM ALIPHATIC HC STD  
 Misc :  
 ALS Vial : 2 Sample Multiplier: 1

Integration File: autoint1.e  
 Quant Time: Aug 27 05:21:11 2021  
 Quant Method : Z:\pestpcbsrv\HPCHEM1\FID\_C\Method\Alaphatic EPH 080321.M  
 Quant Title : GC Extractables  
 QLast Update : Wed Aug 04 02:08:31 2021  
 Response via : Initial Calibration  
 Integrator: ChemStation 6890 Scale Mode: Large solvent peaks clipped

Volume Inj. : 1 ul  
 Signal Phase : Rxi-1ms  
 Signal Info : 20M x 0.18mm x 0.18um

Compound	R.T.	Response	Conc Units
-----			
System Monitoring Compounds			
9) S ortho-Terphenyl (SURR)	11.298	2321071	18.436 ug/ml
Spiked Amount	50.000	Recovery	= 36.87%
12) S 1-chlorooctadecane (S...	12.738	1811099	18.274 ug/ml
Spiked Amount	50.000	Recovery	= 36.55%
Target Compounds			
1) T n-Nonane (C9)	3.138	2274581	21.753 ug/ml
2) T n-Decane (C10)	4.187	2336548	22.188 ug/ml
3) T A~Naphthalene (C11.7)	5.753	2346462	21.595 ug/ml
4) T n-Dodecane (C12)	6.186	2388637	21.997 ug/ml
5) T A~2-methylnaphthalene...	6.802	2344396	21.481 ug/ml
6) T n-Tetradecane (C14)	7.969	2377393	21.296 ug/ml
7) T n-Hexadecane (C16)	9.560	2341092	20.526 ug/ml
8) T n-Octadecane (C18)	10.994	2314593	19.628 ug/ml
10) T n-Eicosane (C20)	12.297	2206557	18.795 ug/ml
11) T n-Heneicosane (C21)	12.906	2186339	18.516 ug/ml
13) T n-Docosane (C22)	13.489	2114387	18.103 ug/ml
14) T n-Tetracosane (C24)	14.588	2075402	17.930 ug/ml
15) T n-Hexacosane (C26)	15.604	2002381	17.867 ug/ml
16) T n-Octacosane (C28)	16.552	2007526	18.490 ug/ml
17) T n-Tricontane (C30)	17.435	2010620	19.257 ug/ml
18) T n-Dotriacontane (C32)	18.264	2013661	20.333 ug/ml
19) T n-Tetratriacontane (C34)	19.045	2035448	21.476 ug/mlm
20) T n-Hexatriacontane (C36)	19.783	2041039	22.587 ug/mlm
21) T n-Octatriacontane (C38)	20.482	2094332	24.239 ug/mlm
22) T n-Tetracontane (C40)	21.285	2142236	24.055 ug/ml
-----			

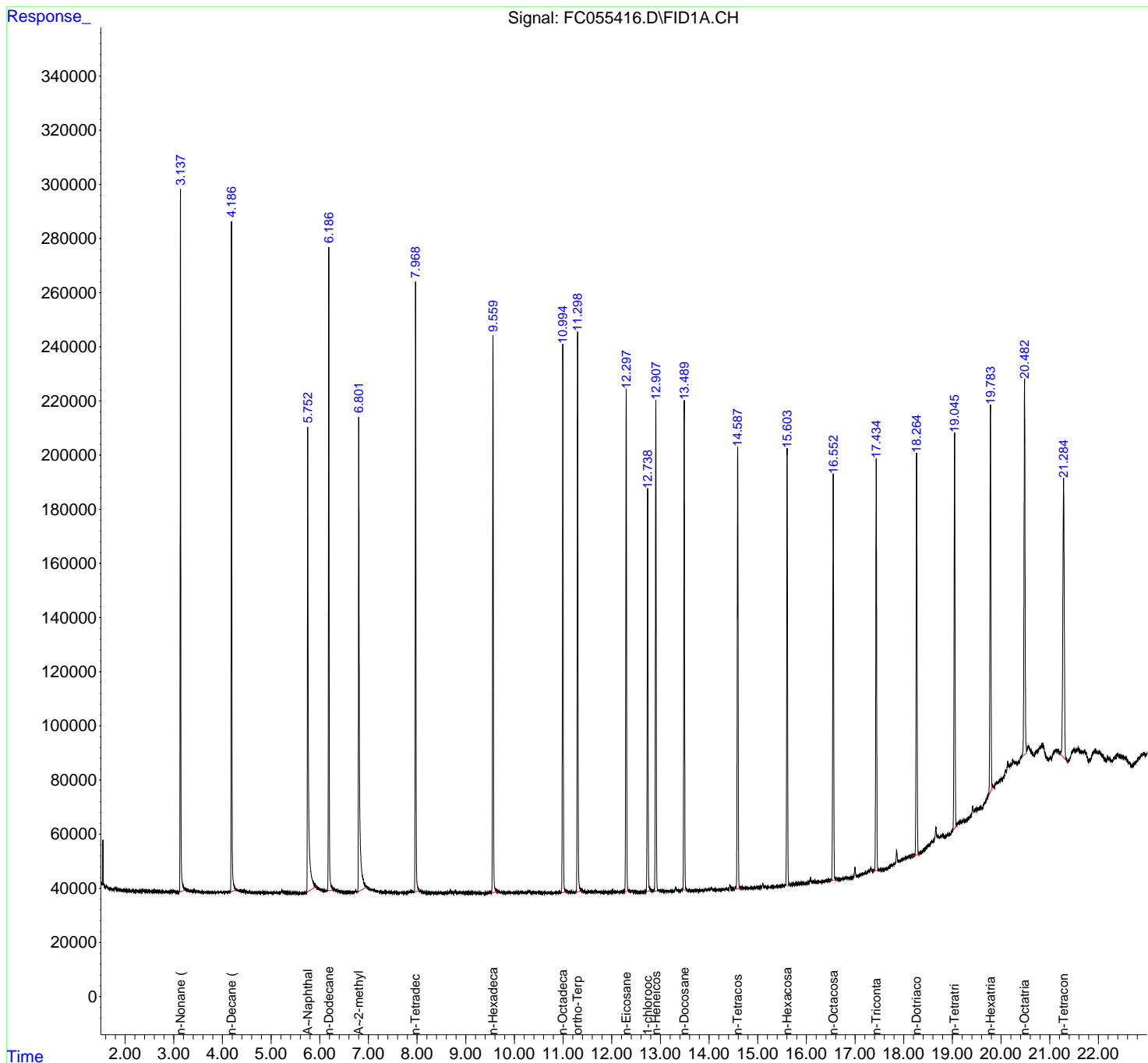
(f)=RT Delta > 1/2 Window

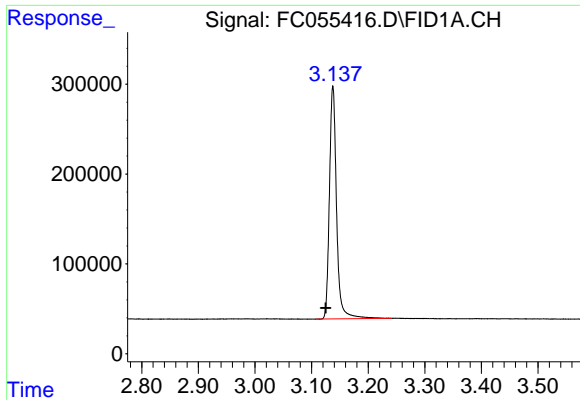
(m)=manual int.

Data Path : Z:\pestpcbsrv\HPCHEM1\FID\_C\Data\FC082621AL\  
 Data File : FC055416.D  
 Signal(s) : FID1A.CH  
 Acq On : 27 Aug 2021 4:57  
 Operator : AJ\MA  
 Sample : 20 PPM ALIPHATIC HC STD  
 Misc :  
 ALS Vial : 2 Sample Multiplier: 1

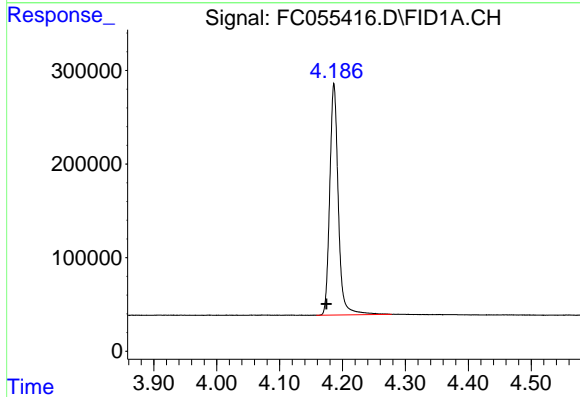
Integration File: autoint1.e  
 Quant Time: Aug 27 05:21:11 2021  
 Quant Method : Z:\pestpcbsrv\HPCHEM1\FID\_C\Method\Aliphatic EPH 080321.M  
 Quant Title : GC Extractables  
 QLast Update : Wed Aug 04 02:08:31 2021  
 Response via : Initial Calibration  
 Integrator: ChemStation 6890 Scale Mode: Large solvent peaks clipped

Volume Inj. : 1 ul  
 Signal Phase : Rxi-1ms  
 Signal Info : 20M x 0.18mm x 0.18um

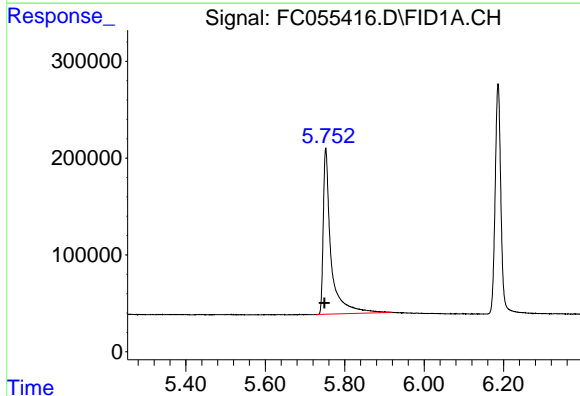




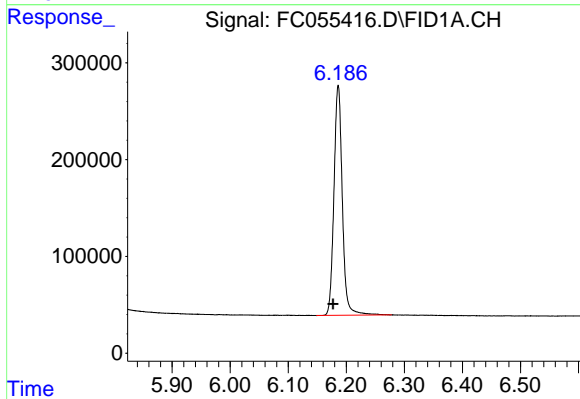
#1 n-Nonane (C9)  
R.T.: 3.138 min  
Delta R.T.: 0.013 min  
Response: 2274581  
Conc: 21.75 ug/ml



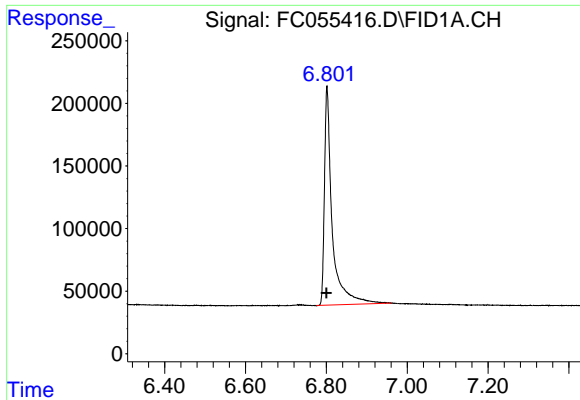
#2 n-Decane (C10)  
R.T.: 4.187 min  
Delta R.T.: 0.012 min  
Response: 2336548  
Conc: 22.19 ug/ml



#3 A~Naphthalene (C11.7)  
R.T.: 5.753 min  
Delta R.T.: 0.004 min  
Response: 2346462  
Conc: 21.59 ug/ml

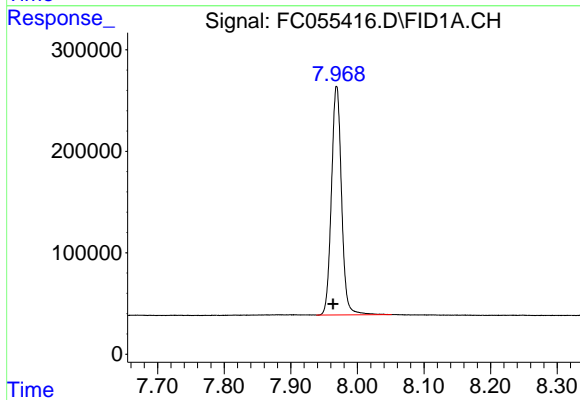


#4 n-Dodecane (C12)  
R.T.: 6.186 min  
Delta R.T.: 0.009 min  
Response: 2388637  
Conc: 22.00 ug/ml



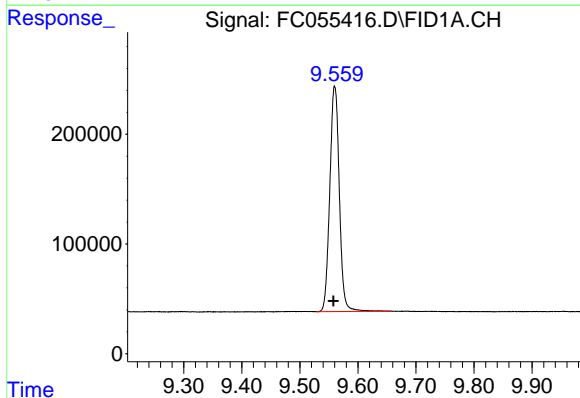
#5 A~2-methylnaphthalene (C12.89)

R.T.: 6.802 min  
Delta R.T.: 0.002 min  
Response: 2344396  
Conc: 21.48 ug/ml



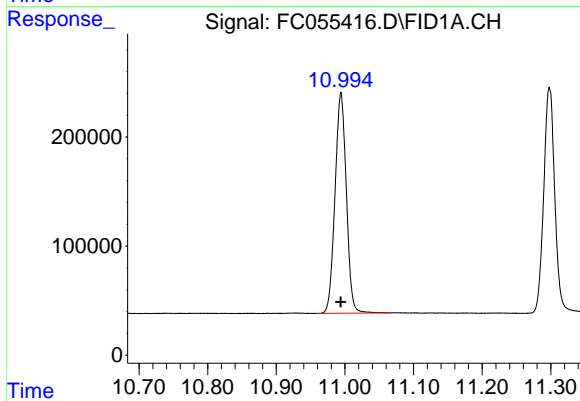
#6 n-Tetradecane (C14)

R.T.: 7.969 min  
Delta R.T.: 0.005 min  
Response: 2377393  
Conc: 21.30 ug/ml



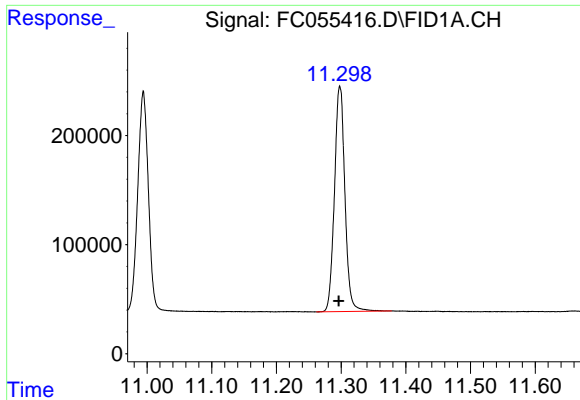
#7 n-Hexadecane (C16)

R.T.: 9.560 min  
Delta R.T.: 0.002 min  
Response: 2341092  
Conc: 20.53 ug/ml



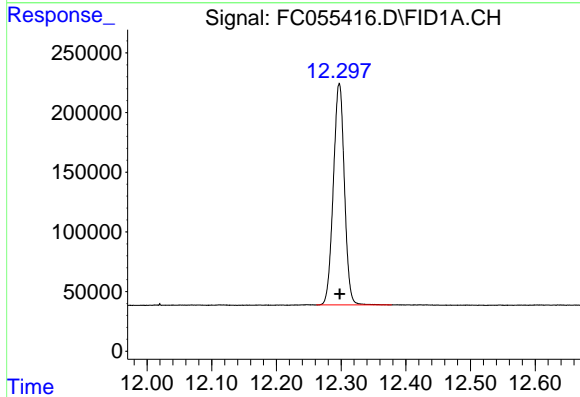
#8 n-Octadecane (C18)

R.T.: 10.994 min  
Delta R.T.: 0.000 min  
Response: 2314593  
Conc: 19.63 ug/ml



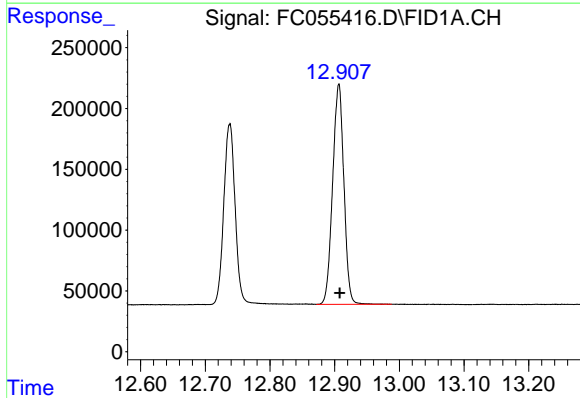
#9 ortho-Terphenyl (SURR)

R.T.: 11.298 min  
 Delta R.T.: 0.002 min  
 Response: 2321071  
 Conc: 18.44 ug/ml



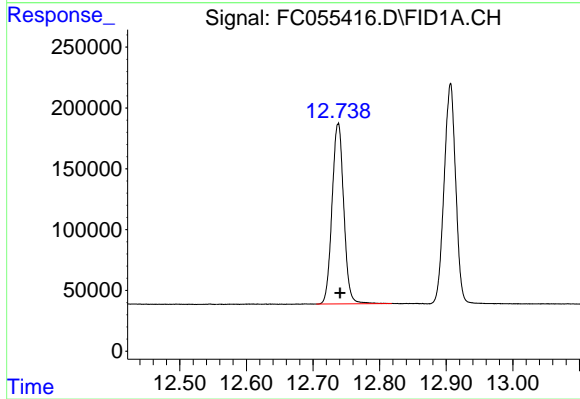
#10 n-Eicosane (C20)

R.T.: 12.297 min  
 Delta R.T.: 0.000 min  
 Response: 2206557  
 Conc: 18.79 ug/ml



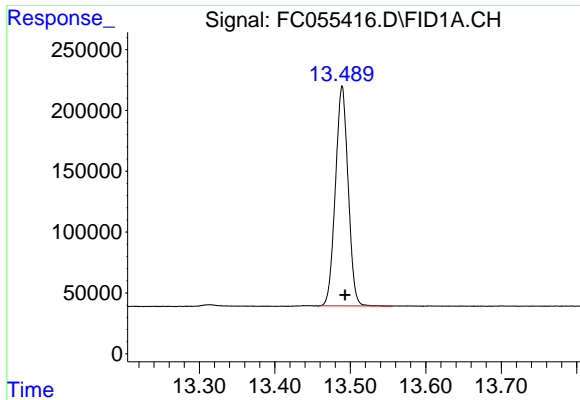
#11 n-Heneicosane (C21)

R.T.: 12.906 min  
 Delta R.T.: -0.002 min  
 Response: 2186339  
 Conc: 18.52 ug/ml



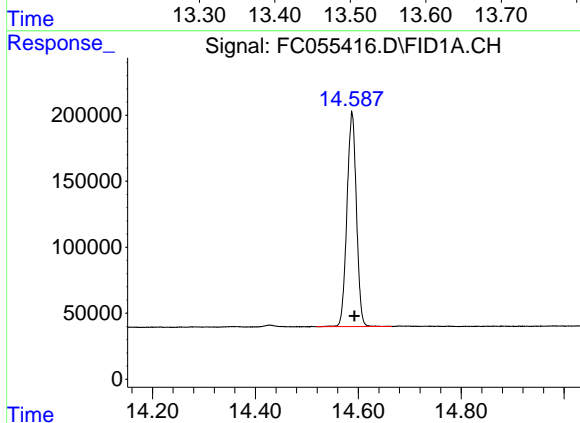
#12 1-chlorooctadecane (SURR)

R.T.: 12.738 min  
 Delta R.T.: -0.003 min  
 Response: 1811099  
 Conc: 18.27 ug/ml



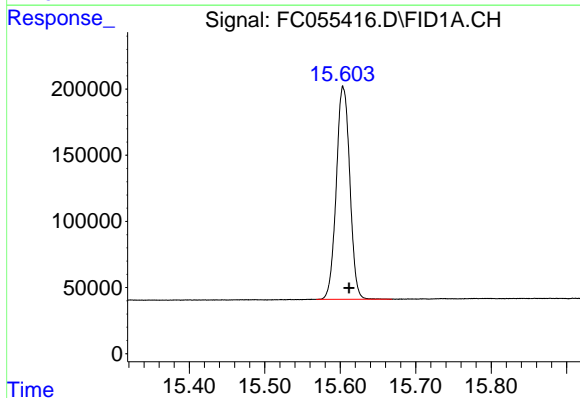
#13 n-Docosane (C22)

R.T.: 13.489 min  
Delta R.T.: -0.004 min  
Response: 2114387  
Conc: 18.10 ug/ml



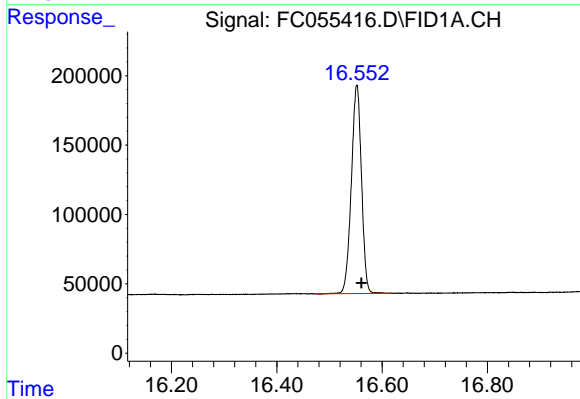
#14 n-Tetracosane (C24)

R.T.: 14.588 min  
Delta R.T.: -0.005 min  
Response: 2075402  
Conc: 17.93 ug/ml



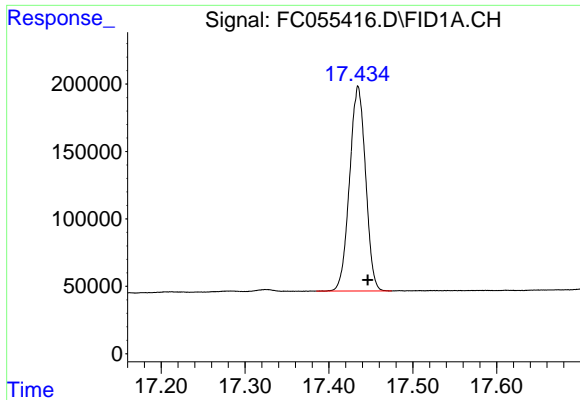
#15 n-Hexacosane (C26)

R.T.: 15.604 min  
Delta R.T.: -0.008 min  
Response: 2002381  
Conc: 17.87 ug/ml



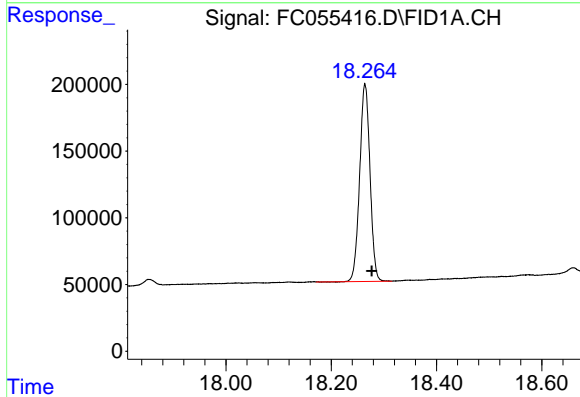
#16 n-Octacosane (C28)

R.T.: 16.552 min  
Delta R.T.: -0.009 min  
Response: 2007526  
Conc: 18.49 ug/ml



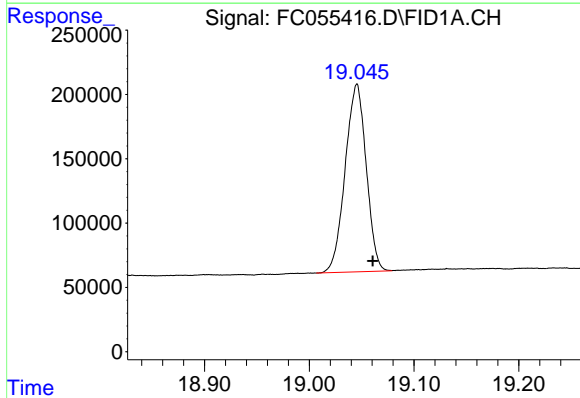
#17 n-Tricontane (C30)

R.T.: 17.435 min  
Delta R.T.: -0.011 min  
Response: 2010620  
Conc: 19.26 ug/ml



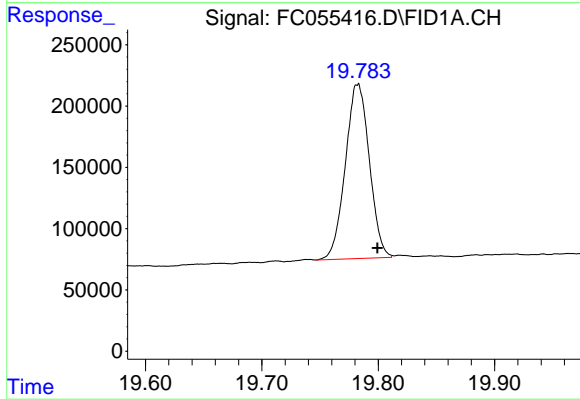
#18 n-Dotriacontane (C32)

R.T.: 18.264 min  
Delta R.T.: -0.013 min  
Response: 2013661  
Conc: 20.33 ug/ml



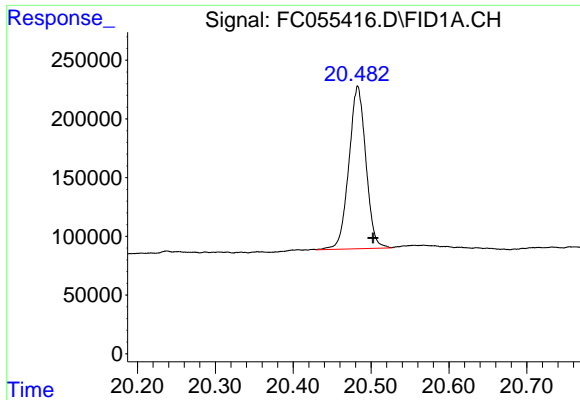
#19 n-Tetratriacontane (C34)

R.T.: 19.045 min  
Delta R.T.: -0.015 min  
Response: 2035448  
Conc: 21.48 ug/ml m



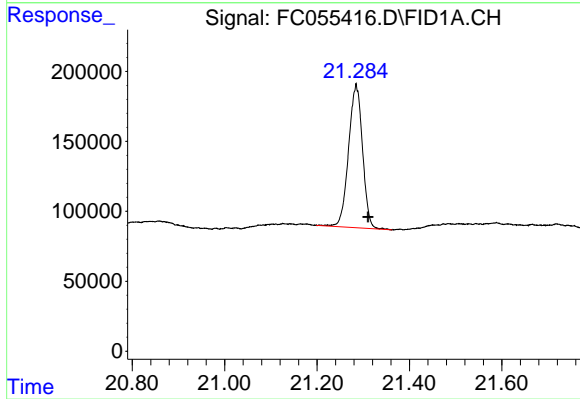
#20 n-Hexatriacontane (C36)

R.T.: 19.783 min  
Delta R.T.: -0.016 min  
Response: 2041039  
Conc: 22.59 ug/ml m



#21 n-Octatriacontane (C38)

R.T.: 20.482 min  
Delta R.T.: -0.020 min  
Response: 2094332  
Conc: 24.24 ug/ml m



#22 n-Tetracontane (C40)

R.T.: 21.285 min  
Delta R.T.: -0.026 min  
Response: 2142236  
Conc: 24.06 ug/ml