

Data Path : Z:\pestpcbsrv\HPCHEM1\FID_C\Data\FC082622AL\
 Data File : FC061319.D
 Signal(s) : FID1A.ch
 Acq On : 26 Aug 2022 21:40
 Operator : YP/AJ
 Sample : N4378-01
 Misc :
 ALS Vial : 12 Sample Multiplier: 1

Instrument :
 FID_C
 ClientSampleId :

Integration File: autoint1.e
 Quant Time: Aug 27 01:56:34 2022
 Quant Method : Z:\pestpcbsrv\HPCHEM1\FID_C\Method\Aliphatic EPH 082222.M
 Quant Title : GC Extractables
 QLast Update : Tue Aug 23 05:32:18 2022
 Response via : Initial Calibration
 Integrator: ChemStation

Volume Inj. : 1 ul
 Signal Phase : Rxi-1ms
 Signal Info : 20M x 0.18mm x 0.18um

Compound	R.T.	Response	Conc Units

System Monitoring Compounds			
9) S ortho-Terphenyl (SURR)	11.641	3967986	22.414 ug/ml
Spiked Amount	50.000	Recovery	= 44.83%
12) S 1-chlorooctadecane (S...	13.073	3371269	24.072 ug/ml
Spiked Amount	50.000	Recovery	= 48.14%
Target Compounds			
3) T A~Naphthalene (C11.7)	6.063	48507	0.280 ug/ml
6) T n-Tetradecane (C14)	8.266	54543	0.349 ug/ml
10) T n-Eicosane (C20)	12.607	252297	1.623 ug/ml
11) T n-Heneicosane (C21)	13.253	341441	2.183 ug/ml
13) T n-Docosane (C22)	13.848	652979	4.208 ug/ml
14) T n-Tetracosane (C24)	14.898	1100810	7.116 ug/ml
15) T n-Hexacosane (C26)	15.947	210517	1.399 ug/ml
16) T n-Octacosane (C28)	16.890	590568	3.998 ug/ml
17) T n-Tricontane (C30)	17.754	432790	3.133 ug/ml
18) T n-Dotriacontane (C32)	18.603	144399	1.316 ug/ml
19) T n-Tetratriacontane (C34)	19.425	267789	3.469 ug/ml

(f)=RT Delta > 1/2 Window

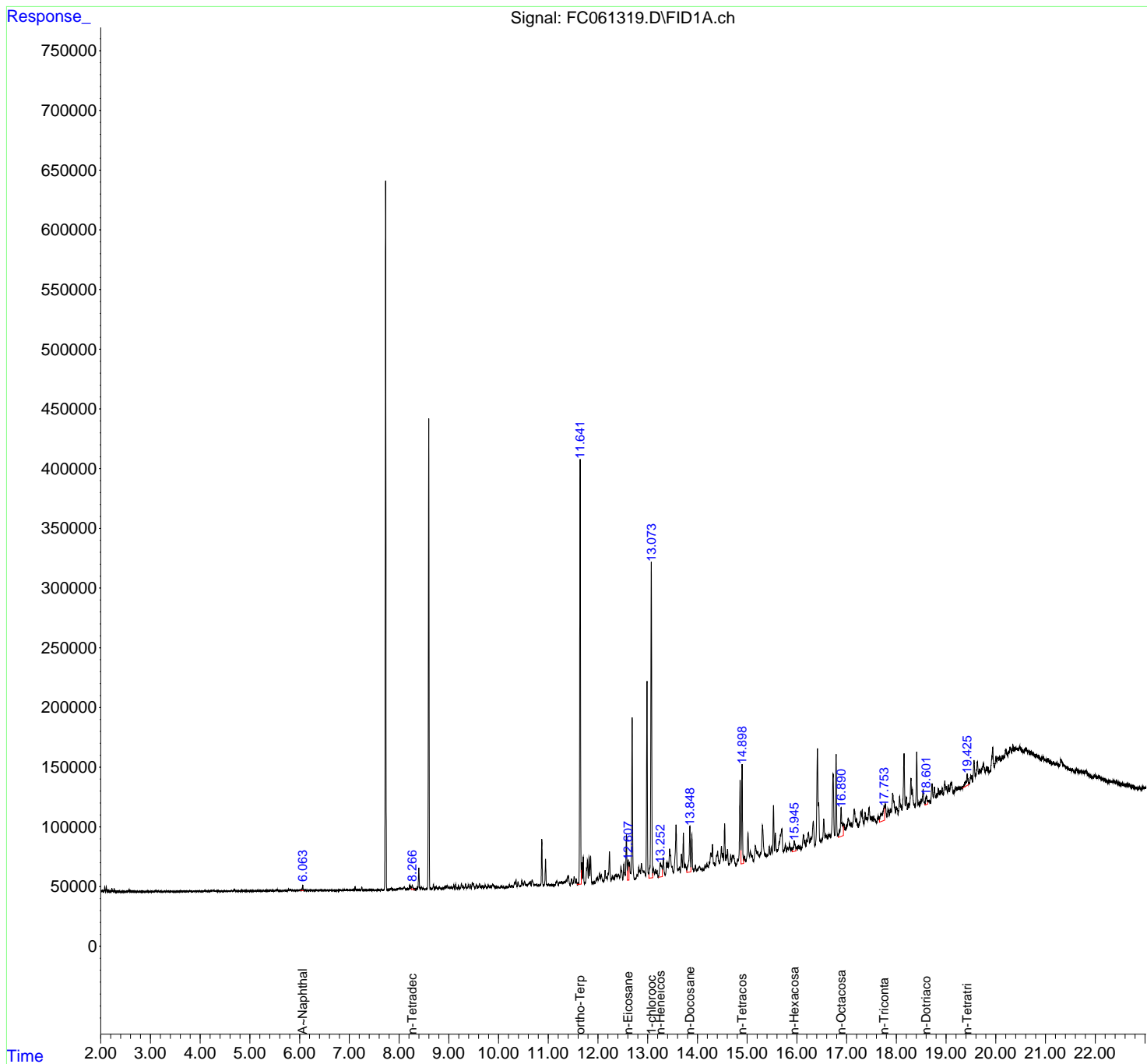
(m)=manual int.

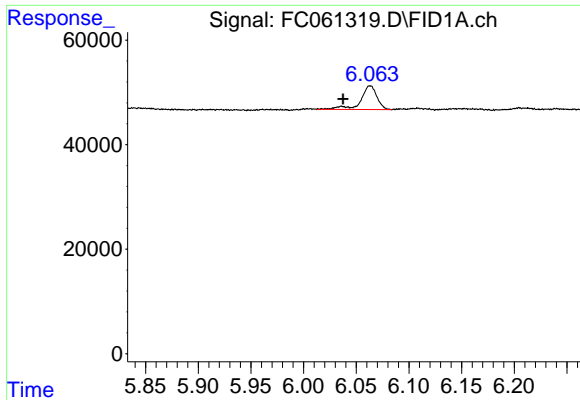
Data Path : Z:\pestpcbsrv\HPCHEM1\FID_C\Data\FC082622AL\
 Data File : FC061319.D
 Signal(s) : FID1A.ch
 Acq On : 26 Aug 2022 21:40
 Operator : YP/AJ
 Sample : N4378-01
 Misc :
 ALS Vial : 12 Sample Multiplier: 1

Instrument :
 FID_C
 ClientSampleId :

Integration File: autoint1.e
 Quant Time: Aug 27 01:56:34 2022
 Quant Method : Z:\pestpcbsrv\HPCHEM1\FID_C\Method\Aliphatic EPH 082222.M
 Quant Title : GC Extractables
 QLast Update : Tue Aug 23 05:32:18 2022
 Response via : Initial Calibration
 Integrator: ChemStation

Volume Inj. : 1 ul
 Signal Phase : Rxi-1ms
 Signal Info : 20M x 0.18mm x 0.18um

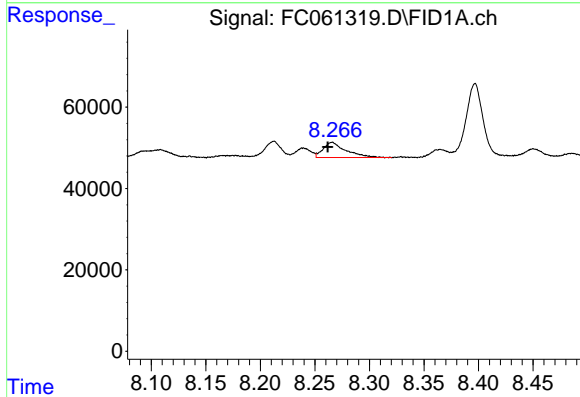




#3 A~Naphthalene (C11.7)

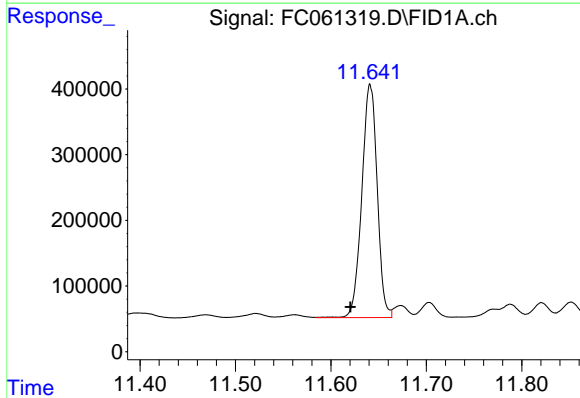
R.T.: 6.063 min
 Delta R.T.: 0.026 min
 Response: 48507
 Conc: 0.28 ug/ml

Instrument :
 FID_C
 ClientSampleId :



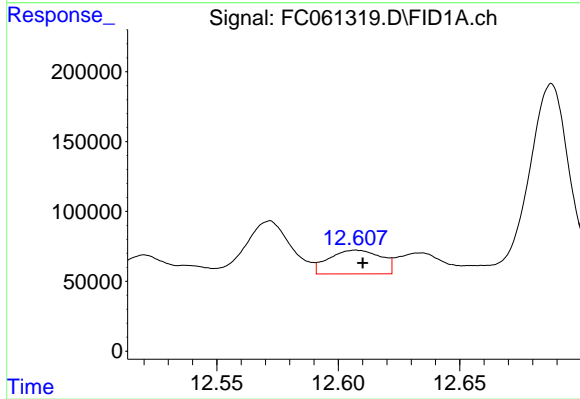
#6 n-Tetradecane (C14)

R.T.: 8.266 min
 Delta R.T.: 0.004 min
 Response: 54543
 Conc: 0.35 ug/ml



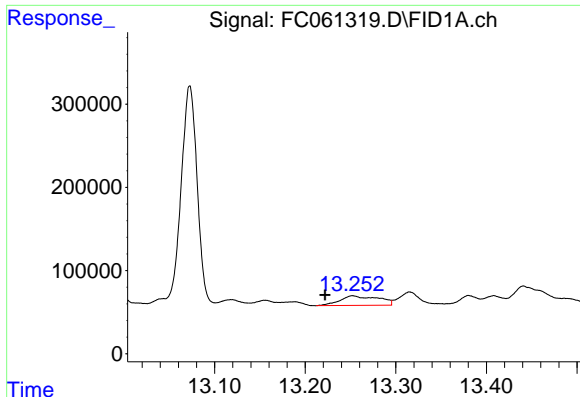
#9 ortho-Terphenyl (SURRE)

R.T.: 11.641 min
 Delta R.T.: 0.021 min
 Response: 3967986
 Conc: 22.41 ug/ml



#10 n-Eicosane (C20)

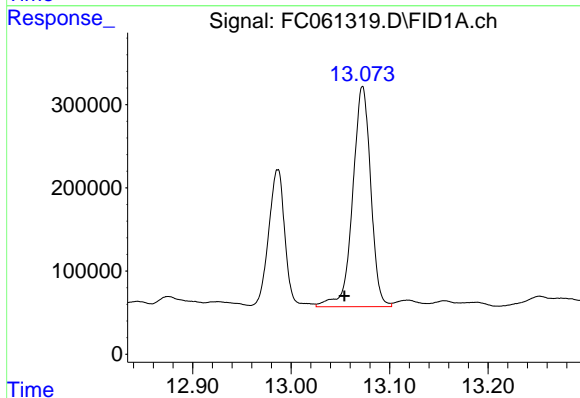
R.T.: 12.607 min
 Delta R.T.: -0.003 min
 Response: 252297
 Conc: 1.62 ug/ml



#11 n-Heneicosane (C21)

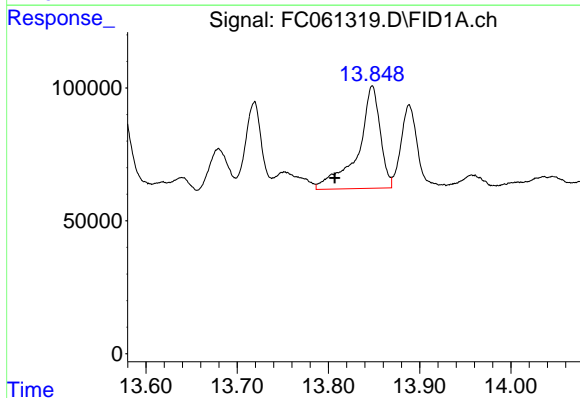
R.T.: 13.253 min
 Delta R.T.: 0.031 min
 Response: 341441
 Conc: 2.18 ug/ml

Instrument :
 FID_C
 ClientSampleId :



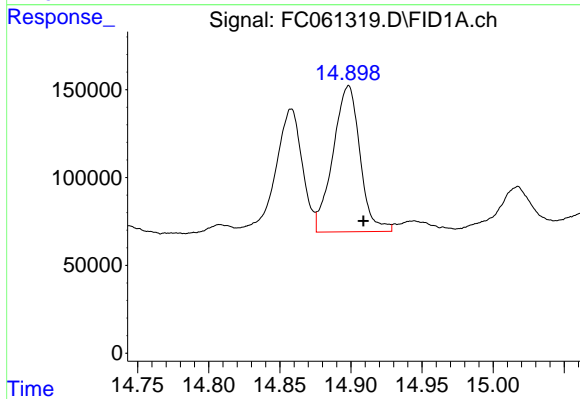
#12 1-chlorooctadecane (SURR)

R.T.: 13.073 min
 Delta R.T.: 0.018 min
 Response: 3371269
 Conc: 24.07 ug/ml



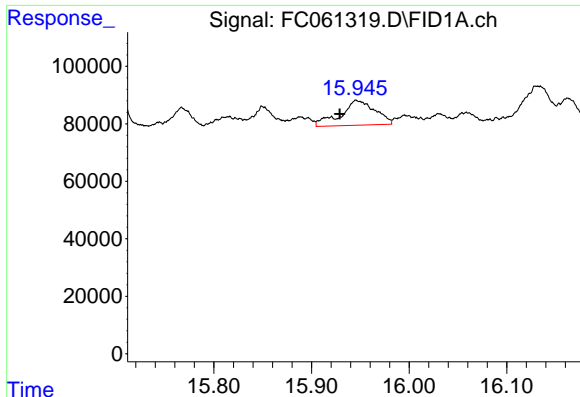
#13 n-Docosane (C22)

R.T.: 13.848 min
 Delta R.T.: 0.041 min
 Response: 652979
 Conc: 4.21 ug/ml



#14 n-Tetracosane (C24)

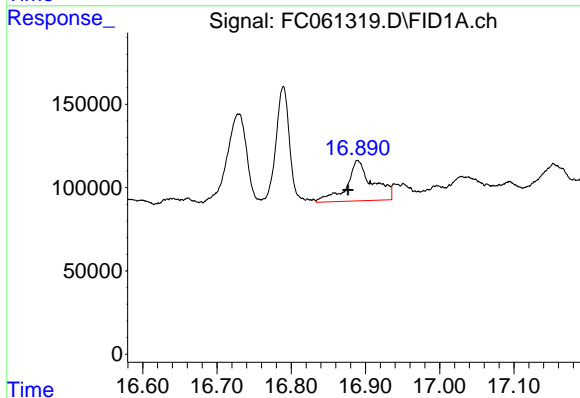
R.T.: 14.898 min
 Delta R.T.: -0.011 min
 Response: 1100810
 Conc: 7.12 ug/ml



#15 n-Hexacosane (C26)

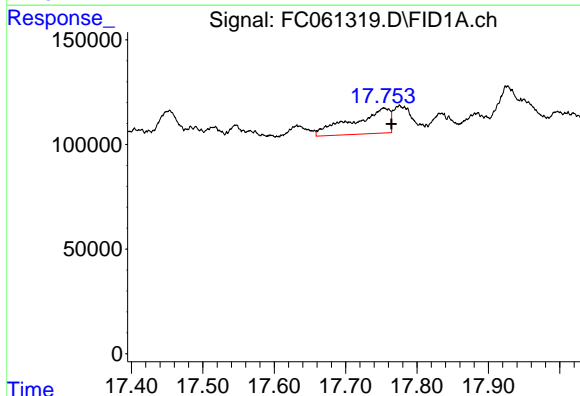
R.T.: 15.947 min
 Delta R.T.: 0.018 min
 Response: 210517
 Conc: 1.40 ug/ml

Instrument :
 FID_C
 ClientSampleId :



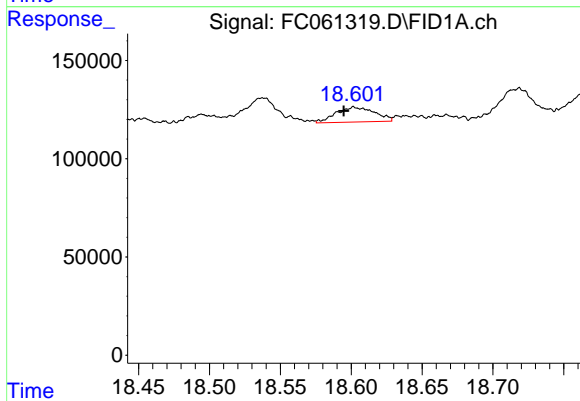
#16 n-Octacosane (C28)

R.T.: 16.890 min
 Delta R.T.: 0.013 min
 Response: 590568
 Conc: 4.00 ug/ml



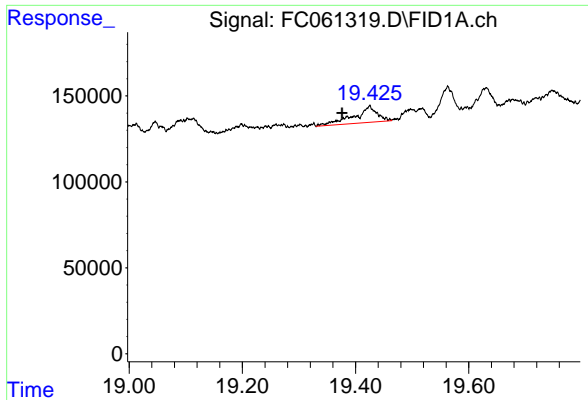
#17 n-Tricontane (C30)

R.T.: 17.754 min
 Delta R.T.: -0.010 min
 Response: 432790
 Conc: 3.13 ug/ml



#18 n-Dotriacontane (C32)

R.T.: 18.603 min
 Delta R.T.: 0.008 min
 Response: 144399
 Conc: 1.32 ug/ml



#19 n-Tetratriacontane (C34)

R.T.: 19.425 min
Delta R.T.: 0.048 min
Response: 267789
Conc: 3.47 ug/ml

Instrument :
FID_C
ClientSampleId :