

Data Path : Z:\pestpcbsrv\HPCHEM1\FID_C\Data\FC082719AL\
 Data File : FC043145.D
 Signal(s) : FID1A.CH
 Acq On : 28 Aug 2019 3:23
 Operator : DD\AJ
 Sample : K4092-10
 Misc :
 ALS Vial : 15 Sample Multiplier: 1

Integration File: autoint1.e
 Quant Time: Aug 28 04:24:07 2019
 Quant Method : Z:\pestpcbsrv\HPCHEM1\FID_C\Method\Alaphatic EPH 082719.M
 Quant Title : GC Extractables
 QLast Update : Wed Aug 28 04:05:56 2019
 Response via : Initial Calibration
 Integrator: ChemStation 6890 Scale Mode: Large solvent peaks clipped

Volume Inj. : 1 ul
 Signal Phase : Rxi-1ms
 Signal Info : 20M x 0.18mm x 0.18um

Compound	R.T.	Response	Conc Units
System Monitoring Compounds			
9) S ortho-Terphenyl (SURR)	11.629	4415175	30.837 ug/ml
Spiked Amount	50.000	Recovery	= 61.67%
12) S 1-chlorooctadecane (S...	13.051	3397925	31.102 ug/ml
Spiked Amount	50.000	Recovery	= 62.20%

Target Compounds

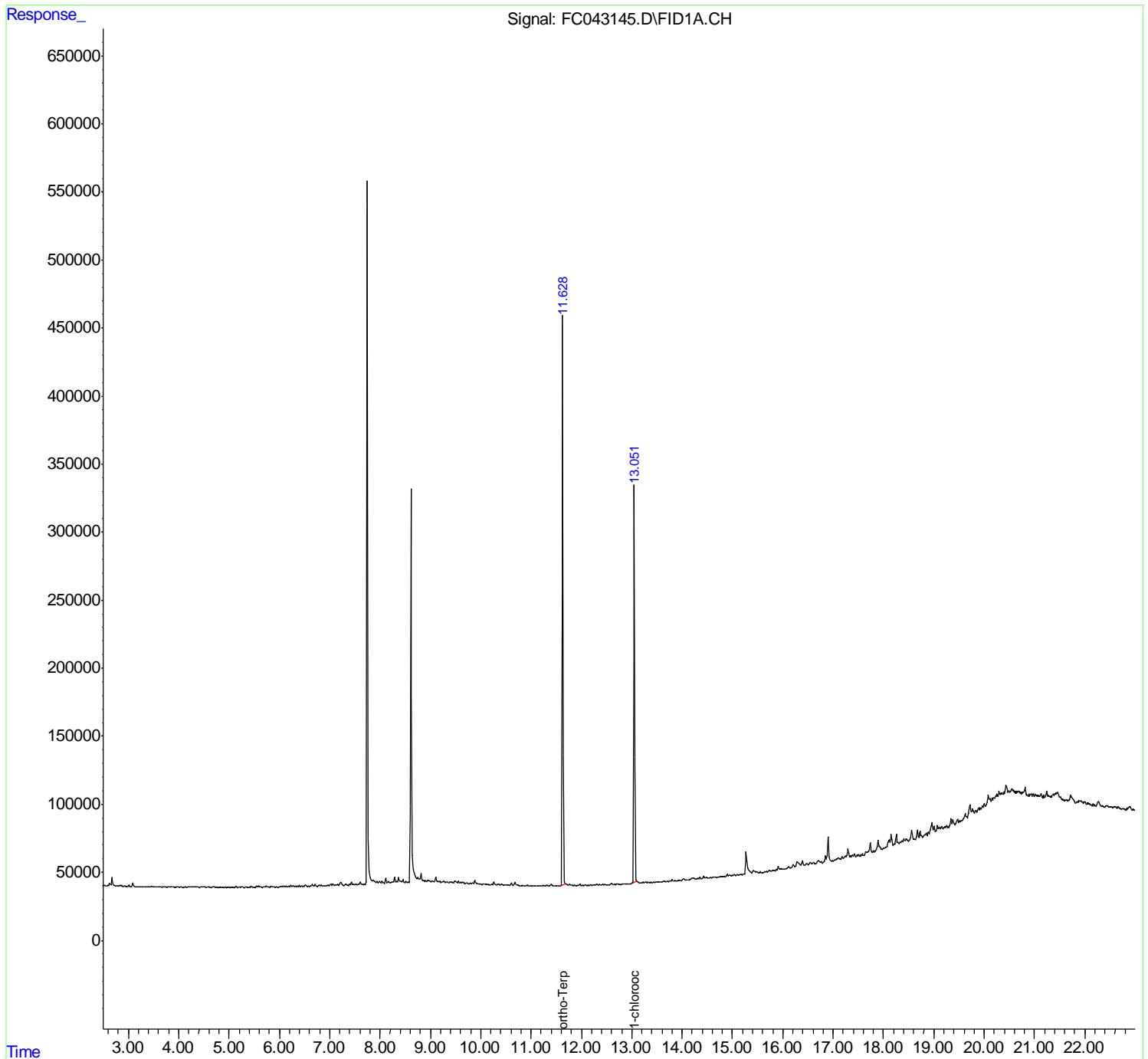
(f)=RT Delta > 1/2 Window

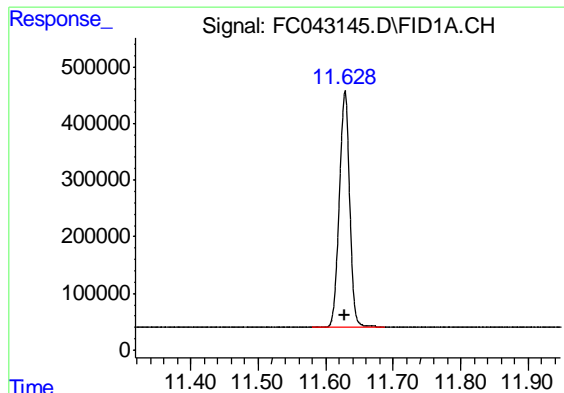
(m)=manual int.

Data Path : Z:\pestpcbsrv\HPCHEM1\FID_C\Data\FC082719AL\
 Data File : FC043145.D
 Signal(s) : FID1A.CH
 Acq On : 28 Aug 2019 3:23
 Operator : DD\AJ
 Sample : K4092-10
 Misc :
 ALS Vial : 15 Sample Multiplier: 1

Integration File: autoint1.e
 Quant Time: Aug 28 04:24:07 2019
 Quant Method : Z:\pestpcbsrv\HPCHEM1\FID_C\Method\Alaphatic EPH 082719.M
 Quant Title : GC Extractables
 QLast Update : Wed Aug 28 04:05:56 2019
 Response via : Initial Calibration
 Integrator: ChemStation 6890 Scale Mode: Large solvent peaks clipped

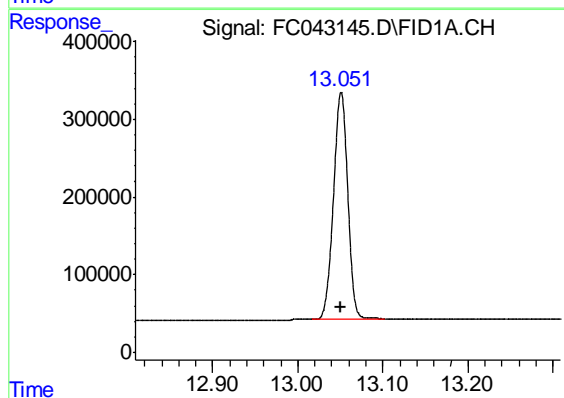
Volume Inj. : 1 ul
 Signal Phase : Rxi-1ms
 Signal Info : 20M x 0.18mm x 0.18um





#9 ortho-Terphenyl (SURR)

R.T.: 11.629 min
Delta R.T.: 0.000 min
Response: 4415175
Conc: 30.84 ug/ml



#12 1-chlorooctadecane (SURR)

R.T.: 13.051 min
Delta R.T.: 0.000 min
Response: 3397925
Conc: 31.10 ug/ml