

Data Path : Z:\pestpcbsrv\HPCHEM1\FID\_C\Data\FC082720AL\  
 Data File : FC049267.D  
 Signal(s) : FID1A.CH  
 Acq On : 27 Aug 2020 13:35  
 Operator : DD\AJ  
 Sample : L3498-03  
 Misc :  
 ALS Vial : 4 Sample Multiplier: 1

Integration File: autoint1.e  
 Quant Time: Aug 28 01:56:09 2020  
 Quant Method : Z:\pestpcbsrv\HPCHEM1\FID\_C\Method\Alaphatic EPH 080720.M  
 Quant Title : GC Extractables  
 QLast Update : Sat Aug 08 02:38:47 2020  
 Response via : Initial Calibration  
 Integrator: ChemStation 6890 Scale Mode: Large solvent peaks clipped

Volume Inj. : 1 ul  
 Signal Phase : Rxi-1ms  
 Signal Info : 20M x 0.18mm x 0.18um

Compound	R.T.	Response	Conc Units
-----			
System Monitoring Compounds			
9) S ortho-Terphenyl (SURR)	11.678	4156930	34.987 ug/ml
Spiked Amount	50.000	Recovery	= 69.97%
12) S 1-chlorooctadecane (S...	13.111	3562304	36.619 ug/ml
Spiked Amount	50.000	Recovery	= 73.24%
Target Compounds			
6) T n-Tetradecane (C14)	8.367f	220439	2.093 ug/ml
17) T n-Tricontane (C30)	17.821	191032	1.653 ug/ml
18) T n-Dotriacontane (C32)	18.647	145722	1.348 ug/ml
-----			

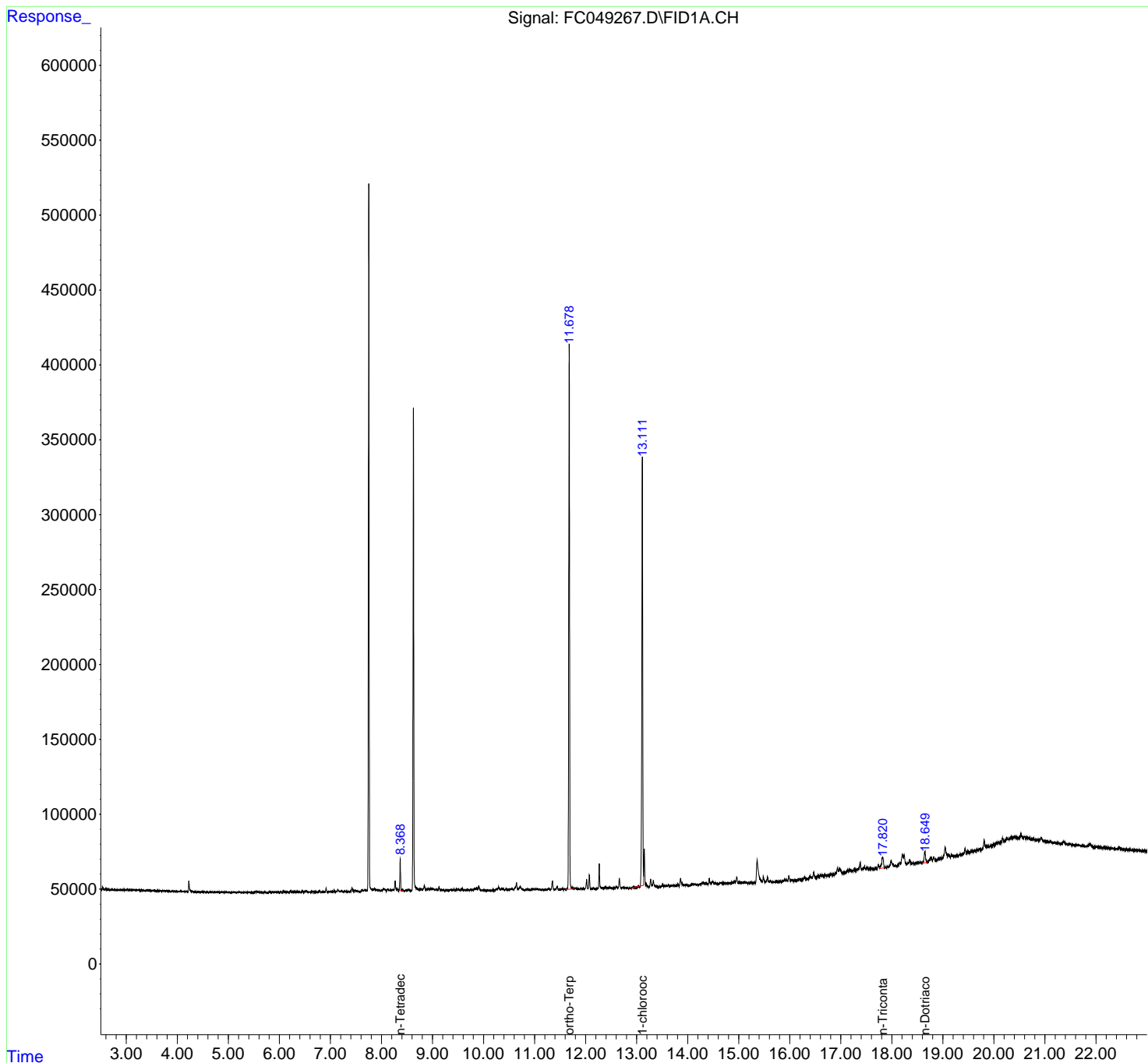
(f)=RT Delta > 1/2 Window

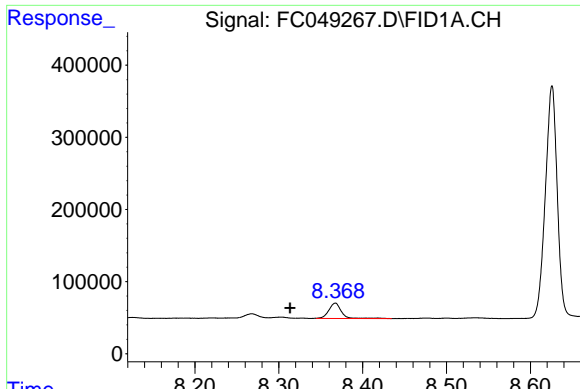
(m)=manual int.

Data Path : Z:\pestpcbsrv\HPCHEM1\FID\_C\Data\FC082720AL\  
Data File : FC049267.D  
Signal(s) : FID1A.CH  
Acq On : 27 Aug 2020 13:35  
Operator : DD\AJ  
Sample : L3498-03  
Misc :  
ALS Vial : 4 Sample Multiplier: 1

Integration File: autoint1.e  
Quant Time: Aug 28 01:56:09 2020  
Quant Method : Z:\pestpcbsrv\HPCHEM1\FID\_C\Method\Alaphatic EPH 080720.M  
Quant Title : GC Extractables  
QLast Update : Sat Aug 08 02:38:47 2020  
Response via : Initial Calibration  
Integrator: ChemStation 6890 Scale Mode: Large solvent peaks clipped

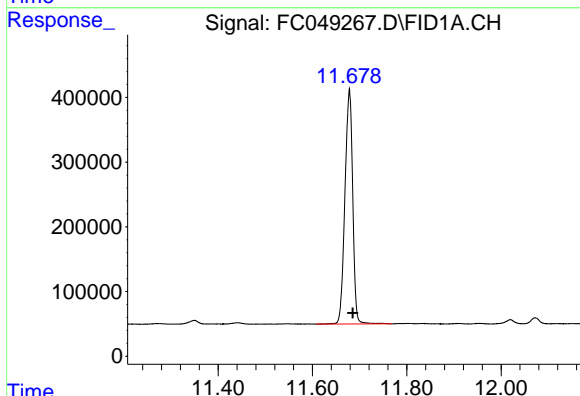
Volume Inj. : 1 ul  
Signal Phase : Rxi-1ms  
Signal Info : 20M x 0.18mm x 0.18um





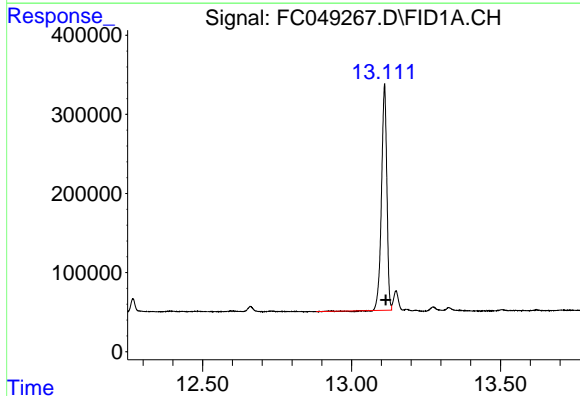
#6 n-Tetradecane (C14)

R.T.: 8.367 min  
Delta R.T.: 0.054 min  
Response: 220439  
Conc: 2.09 ug/ml



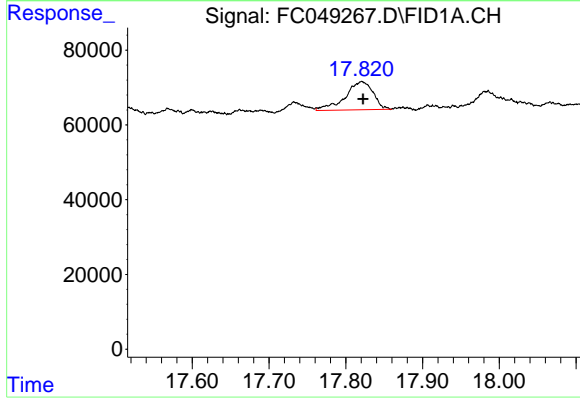
#9 ortho-Terphenyl (SURR)

R.T.: 11.678 min  
Delta R.T.: -0.007 min  
Response: 4156930  
Conc: 34.99 ug/ml



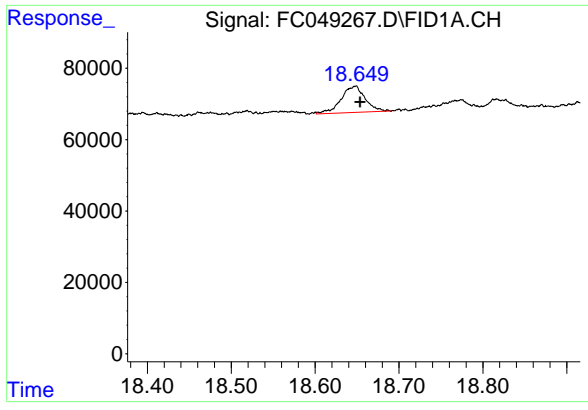
#12 1-chlorooctadecane (SURR)

R.T.: 13.111 min  
Delta R.T.: -0.004 min  
Response: 3562304  
Conc: 36.62 ug/ml



#17 n-Tricontane (C30)

R.T.: 17.821 min  
Delta R.T.: -0.002 min  
Response: 191032  
Conc: 1.65 ug/ml



#18 n-Dotriacontane (C32)

R.T.: 18.647 min  
Delta R.T.: -0.007 min  
Response: 145722  
Conc: 1.35 ug/ml