

Data Path : Z:\pestpcbsrv\HPCHEM1\FID\_C\Data\FC082721AL\  
Data File : FC055438.D  
Signal(s) : FID1A.CH  
Acq On : 28 Aug 2021 00:52  
Operator : AJ\MA  
Sample : I.BLK  
Misc :  
ALS Vial : 1 Sample Multiplier: 1

Integration File: autoint1.e  
Quant Time: Aug 28 01:58:31 2021  
Quant Method : Z:\pestpcbsrv\HPCHEM1\FID\_C\Method\Alaphatic EPH 080321.M  
Quant Title : GC Extractables  
QLast Update : Wed Aug 04 02:08:31 2021  
Response via : Initial Calibration  
Integrator: ChemStation 6890 Scale Mode: Large solvent peaks clipped

Volume Inj. : 1 ul  
Signal Phase : Rxi-1ms  
Signal Info : 20M x 0.18mm x 0.18um

Compound	R.T.	Response	Conc Units
----------	------	----------	------------

-----  
System Monitoring Compounds

Target Compounds  
-----

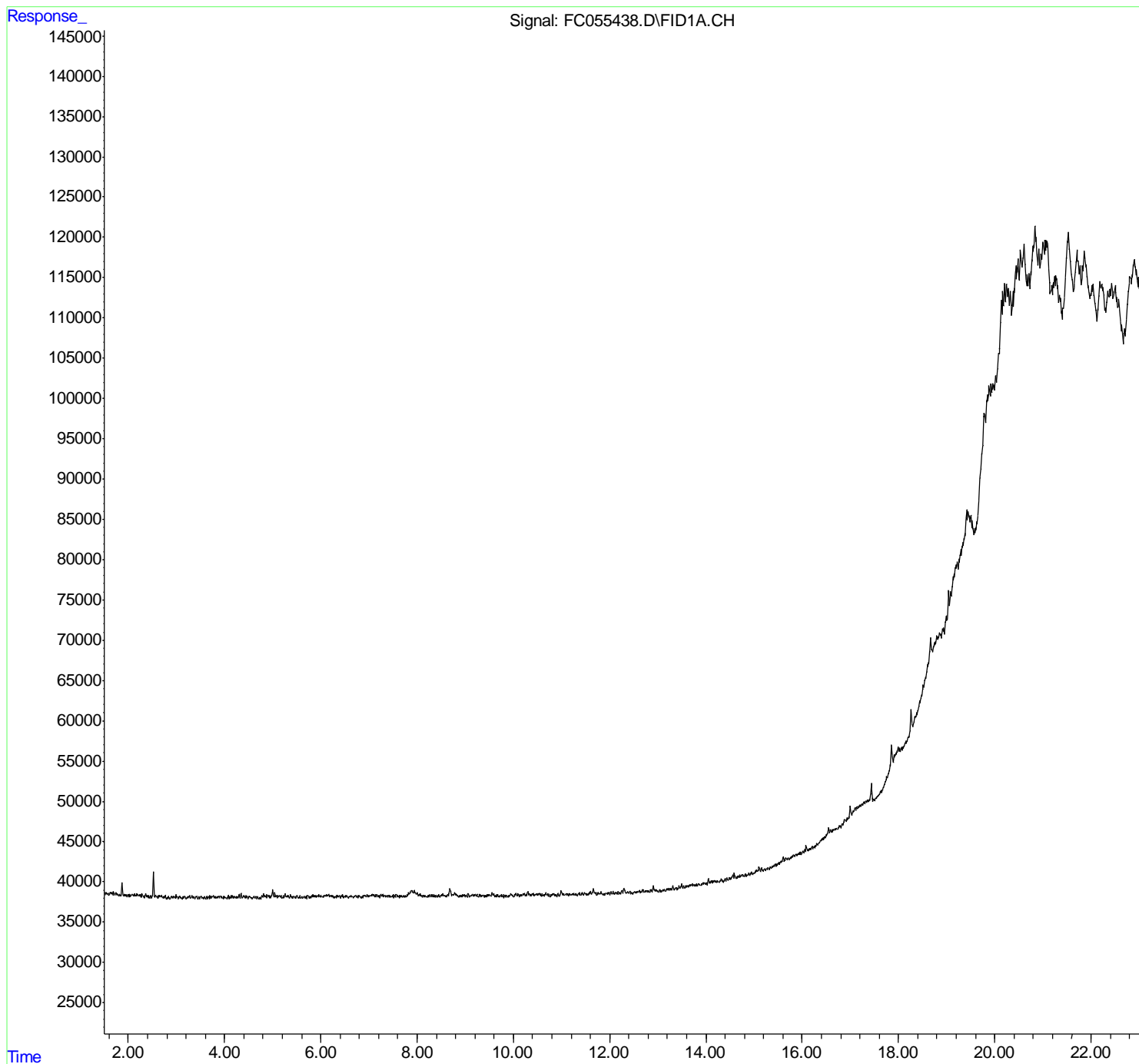
(f)=RT Delta > 1/2 Window

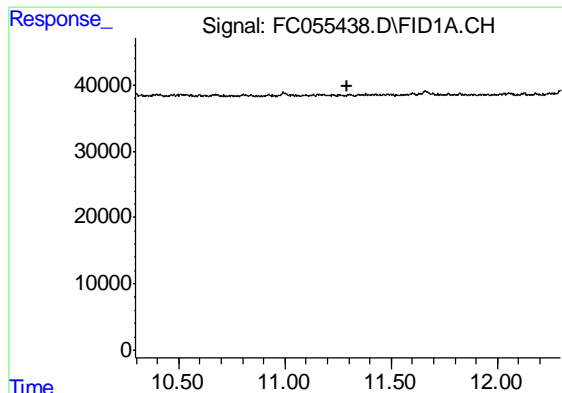
(m)=manual int.

Data Path : Z:\pestpcbsrv\HPCHEM1\FID\_C\Data\FC082721AL\  
Data File : FC055438.D  
Signal(s) : FID1A.CH  
Acq On : 28 Aug 2021 00:52  
Operator : AJ\MA  
Sample : I.BLK  
Misc :  
ALS Vial : 1 Sample Multiplier: 1

Integration File: autoint1.e  
Quant Time: Aug 28 01:58:31 2021  
Quant Method : Z:\pestpcbsrv\HPCHEM1\FID\_C\Method\Alaphatic EPH 080321.M  
Quant Title : GC Extractables  
QLast Update : Wed Aug 04 02:08:31 2021  
Response via : Initial Calibration  
Integrator: ChemStation 6890 Scale Mode: Large solvent peaks clipped

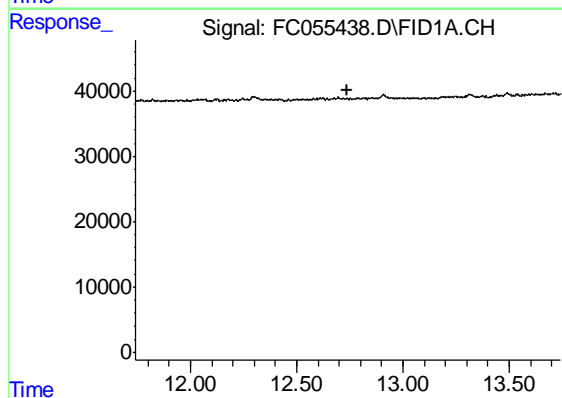
Volume Inj. : 1 ul  
Signal Phase : Rxi-1ms  
Signal Info : 20M x 0.18mm x 0.18um





#9 ortho-Terphenyl (SURR)

R.T.: 0.000 min  
Exp R.T. : 11.296 min  
Response: 0  
Conc: N.D.



#12 1-chlorooctadecane (SURR)

R.T.: 0.000 min  
Exp R.T. : 12.741 min  
Response: 0  
Conc: N.D.