

Data Path : Z:\pestpcbsrv\HPCHEM1\FID\_C\Data\FC082724AL\  
 Data File : FC067016.D  
 Signal(s) : FID1A.ch  
 Acq On : 27 Aug 2024 12:21  
 Operator : YP/AJ  
 Sample : I.BLK  
 Misc :  
 ALS Vial : 1 Sample Multiplier: 1

Instrument :  
 FID\_C  
 ClientSampleId :

Integration File: autoint1.e  
 Quant Time: Aug 28 02:27:15 2024  
 Quant Method : Z:\pestpcbsrv\HPCHEM1\FID\_C\Method\Aliphatic EPH 081224.M  
 Quant Title : GC Extractables  
 QLast Update : Mon Aug 12 15:57:40 2024  
 Response via : Initial Calibration  
 Integrator: ChemStation

Volume Inj. : 1 ul  
 Signal Phase : Rxi-1ms  
 Signal Info : 20M x 0.18mm x 0.18um

Compound	R.T.	Response	Conc Units
-----			
System Monitoring Compounds			
Target Compounds			
21) T n-Octatriacontane (C38)	20.766	681565	6.256 ug/ml
-----			

(f)=RT Delta > 1/2 Window

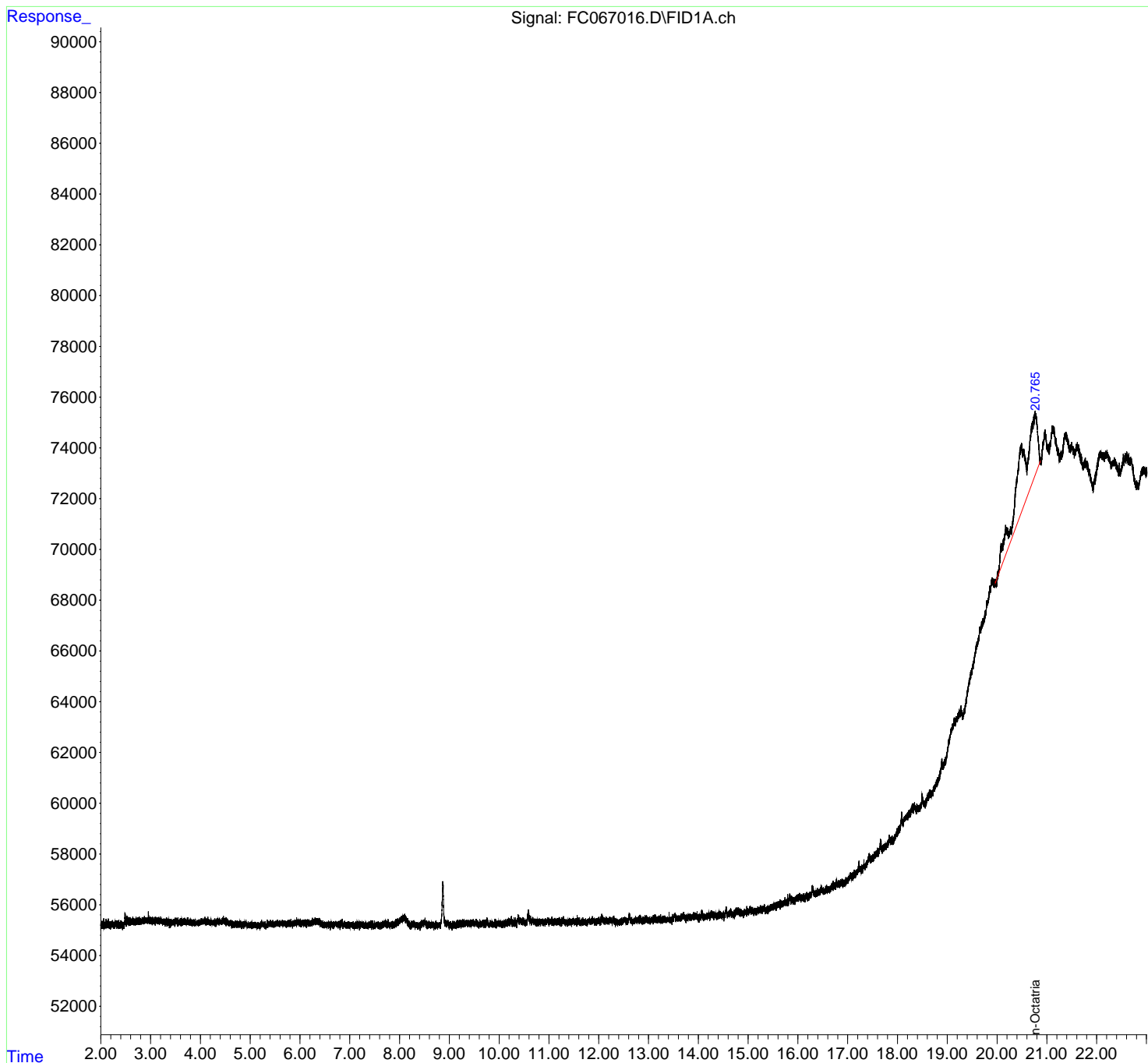
(m)=manual int.

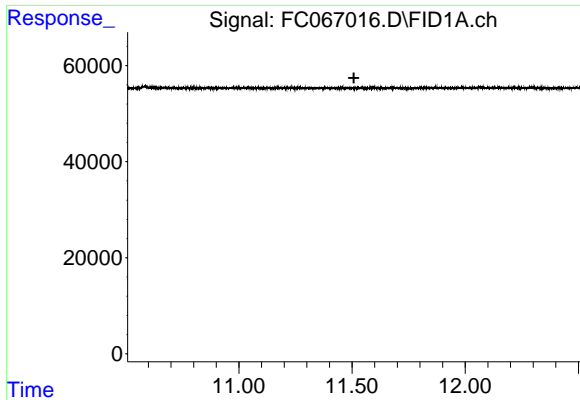
Data Path : Z:\pestpcbsrv\HPCHEM1\FID\_C\Data\FC082724AL\  
 Data File : FC067016.D  
 Signal(s) : FID1A.ch  
 Acq On : 27 Aug 2024 12:21  
 Operator : YP/AJ  
 Sample : I.BLK  
 Misc :  
 ALS Vial : 1 Sample Multiplier: 1

Instrument :  
 FID\_C  
 ClientSampleId :

Integration File: autoint1.e  
 Quant Time: Aug 28 02:27:15 2024  
 Quant Method : Z:\pestpcbsrv\HPCHEM1\FID\_C\Method\Aliphatic EPH 081224.M  
 Quant Title : GC Extractables  
 QLast Update : Mon Aug 12 15:57:40 2024  
 Response via : Initial Calibration  
 Integrator: ChemStation

Volume Inj. : 1 ul  
 Signal Phase : Rxi-1ms  
 Signal Info : 20M x 0.18mm x 0.18um

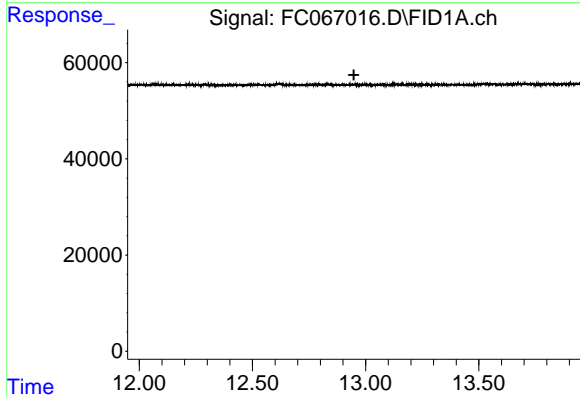




#9 ortho-Terphenyl (SURR)

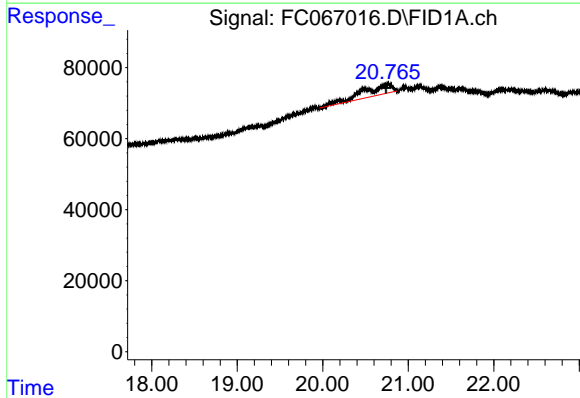
R.T.: 0.000 min  
 Exp R.T. : 11.508 min  
 Response: 0  
 Conc: N.D.

Instrument : FID\_C  
 ClientSampleId :



#12 1-chlorooctadecane (SURR)

R.T.: 0.000 min  
 Exp R.T. : 12.948 min  
 Response: 0  
 Conc: N.D.



#21 n-Octatriacontane (C38)

R.T.: 20.766 min  
 Delta R.T.: 0.026 min  
 Response: 681565  
 Conc: 6.26 ug/ml