

Data Path : Z:\pestpcbsrv\HPCHEM1\FID_C\Data\FC082724AL\
 Data File : FC067026.D
 Signal(s) : FID1A.ch
 Acq On : 27 Aug 2024 21:46
 Operator : YP/AJ
 Sample : P3748-02
 Misc :
 ALS Vial : 19 Sample Multiplier: 1

Instrument :
 FID_C
 ClientSampleId :
 OK-02-082624-E2

Integration File: autoint1.e
 Quant Time: Aug 28 02:29:01 2024
 Quant Method : Z:\pestpcbsrv\HPCHEM1\FID_C\Method\Aliphatic EPH 081224.M
 Quant Title : GC Extractables
 QLast Update : Mon Aug 12 15:57:40 2024
 Response via : Initial Calibration
 Integrator: ChemStation

Volume Inj. : 1 ul
 Signal Phase : Rxi-1ms
 Signal Info : 20M x 0.18mm x 0.18um

Compound	R.T.	Response	Conc Units
System Monitoring Compounds			
9) S ortho-Terphenyl (SURR)	11.515	5631242	36.991 ug/ml
Spiked Amount	50.000	Recovery	= 73.98%
12) S 1-chlorooctadecane (S...	12.953	4093628	37.785 ug/ml
Spiked Amount	50.000	Recovery	= 75.57%

Target Compounds

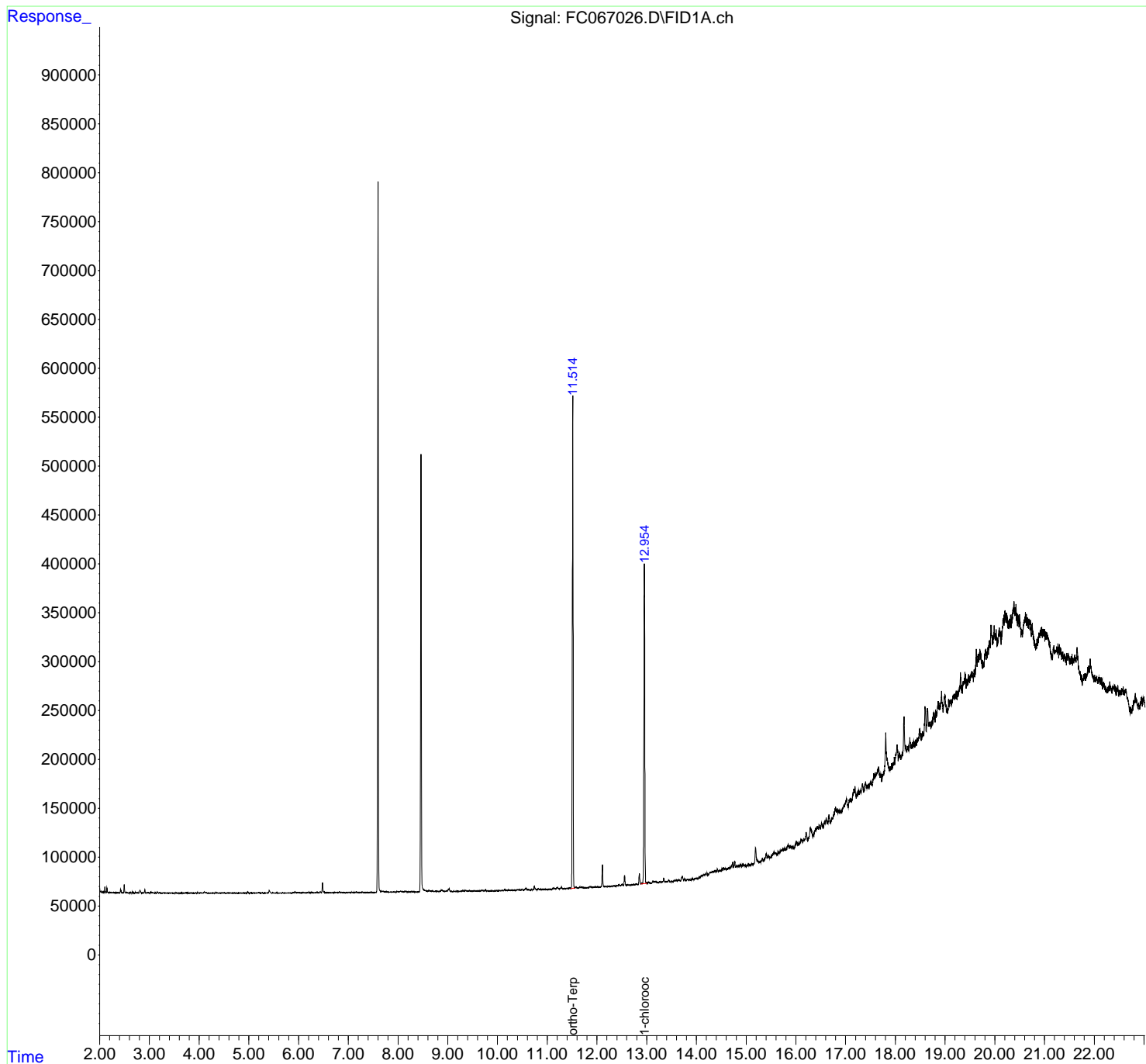
(f)=RT Delta > 1/2 Window (m)=manual int.

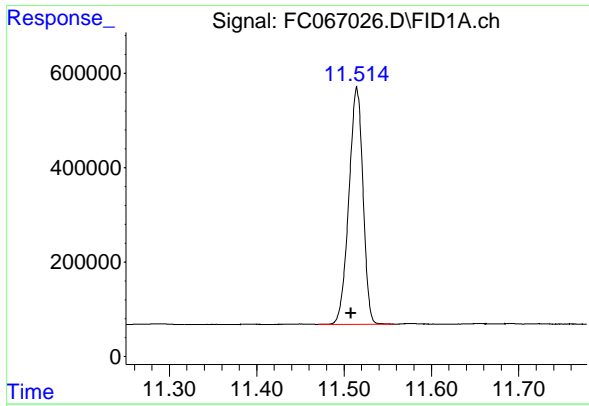
Data Path : Z:\pestpcbsrv\HPCHEM1\FID_C\Data\FC082724AL\
 Data File : FC067026.D
 Signal(s) : FID1A.ch
 Acq On : 27 Aug 2024 21:46
 Operator : YP/AJ
 Sample : P3748-02
 Misc :
 ALS Vial : 19 Sample Multiplier: 1

Instrument :
 FID_C
 ClientSampleId :
 OK-02-082624-E2

Integration File: autoint1.e
 Quant Time: Aug 28 02:29:01 2024
 Quant Method : Z:\pestpcbsrv\HPCHEM1\FID_C\Method\Aliphatic EPH 081224.M
 Quant Title : GC Extractables
 QLast Update : Mon Aug 12 15:57:40 2024
 Response via : Initial Calibration
 Integrator: ChemStation

Volume Inj. : 1 ul
 Signal Phase : Rxi-1ms
 Signal Info : 20M x 0.18mm x 0.18um

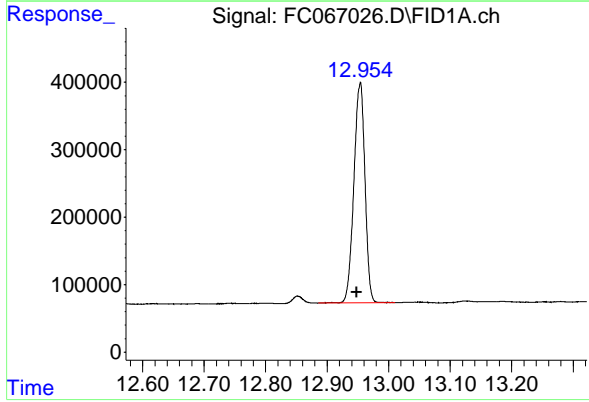




#9 ortho-Terphenyl (SURR)

R.T.: 11.515 min
Delta R.T.: 0.007 min
Response: 5631242
Conc: 36.99 ug/ml

Instrument :
FID_C
ClientSampleId :
OK-02-082624-E2



#12 1-chlorooctadecane (SURR)

R.T.: 12.953 min
Delta R.T.: 0.006 min
Response: 4093628
Conc: 37.78 ug/ml