

Data Path : Z:\pestpcbsrv\HPCHEM1\FID_C\Data\FC082818AL\
 Data File : FC036106.D
 Signal(s) : FID1A.CH
 Acq On : 28 Aug 2018 12:31
 Operator : AJ\SJ
 Sample : J4673-01D
 Misc :
 ALS Vial : 7 Sample Multiplier: 1

Integration File: autoint1.e
 Quant Time: Aug 29 00:40:07 2018
 Quant Method : Z:\PESTPCBSRV\HPCHEM1\FID_C\Method\Alaphatic EPH 082118.M
 Quant Title : GC Extractables
 QLast Update : Tue Aug 21 16:09:01 2018
 Response via : Initial Calibration
 Integrator: ChemStation 6890 Scale Mode: Large solvent peaks clipped

Volume Inj. : 1 ul
 Signal Phase : Rxi-lms
 Signal Info : 20M x 0.18mm x 0.18um

Compound	R.T.	Response	Conc Units

System Monitoring Compounds			
12) S 1-chlorooctadecane (S...	12.855	3519655	43.127 ug/ml
Spiked Amount 50.000		Recovery =	86.25%
Target Compounds			
1) T n-Nonane (C9)	3.215	142811	1.590 ug/ml
2) T n-Decane (C10)	4.282	144884	1.610 ug/ml
4) T n-Dodecane (C12)	6.294	405586	4.373 ug/ml
6) T n-Tetradecane (C14)	8.079	353629	3.725 ug/ml
7) T n-Hexadecane (C16)	9.672	194913	2.048 ug/ml
8) T n-Octadecane (C18)	11.107	172268	1.754 ug/ml
10) T n-Eicosane (C20)	12.412	282155	2.920 ug/ml
11) T n-Heneicosane (C21)	13.021	182387	1.938 ug/ml
13) T n-Docosane (C22)	13.606	256714	2.757 ug/ml
14) T n-Tetracosane (C24)	14.706	129014	1.411 ug/ml
15) T n-Hexacosane (C26)	15.724	343278	3.827 ug/ml
16) T n-Octacosane (C28)	16.677	549548	6.039 ug/ml

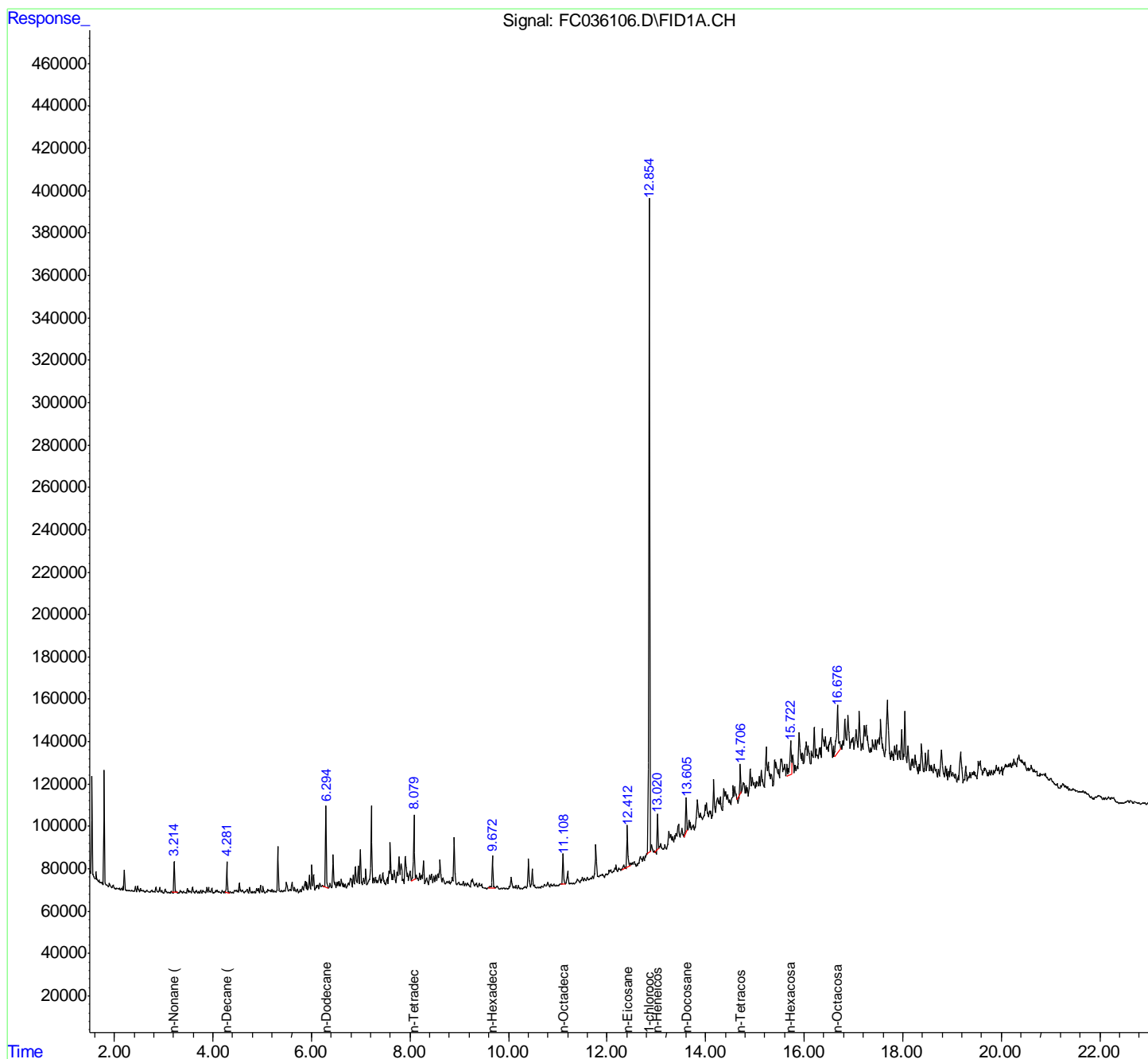
(f)=RT Delta > 1/2 Window

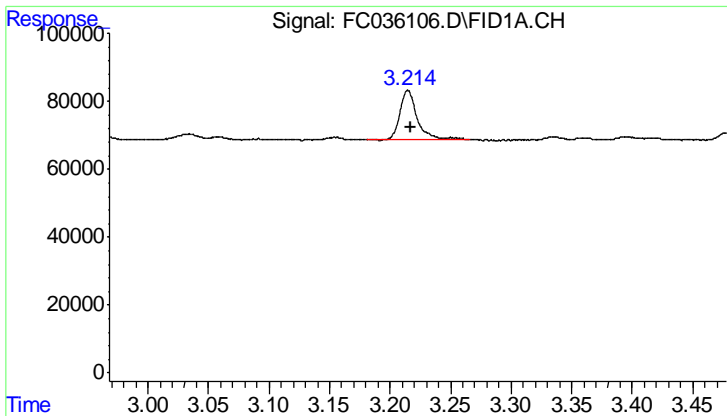
(m)=manual int.

Data Path : Z:\pestpcbsrv\HPCHEM1\FID_C\Data\FC082818AL\
 Data File : FC036106.D
 Signal(s) : FID1A.CH
 Acq On : 28 Aug 2018 12:31
 Operator : AJ\SJ
 Sample : J4673-01D
 Misc :
 ALS Vial : 7 Sample Multiplier: 1

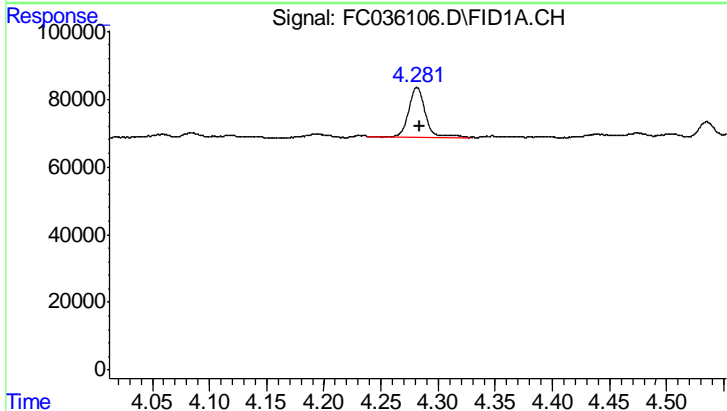
Integration File: autoint1.e
 Quant Time: Aug 29 00:40:07 2018
 Quant Method : Z:\PESTPCBSRV\HPCHEM1\FID_C\Method\Alaphatic EPH 082118.M
 Quant Title : GC Extractables
 QLast Update : Tue Aug 21 16:09:01 2018
 Response via : Initial Calibration
 Integrator: ChemStation 6890 Scale Mode: Large solvent peaks clipped

Volume Inj. : 1 ul
 Signal Phase : Rxi-lms
 Signal Info : 20M x 0.18mm x 0.18um

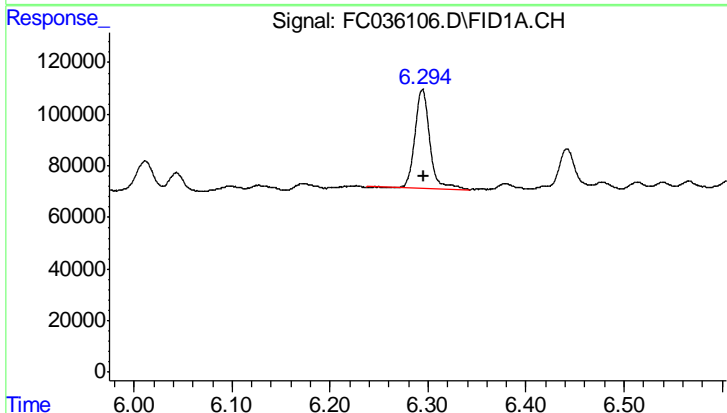




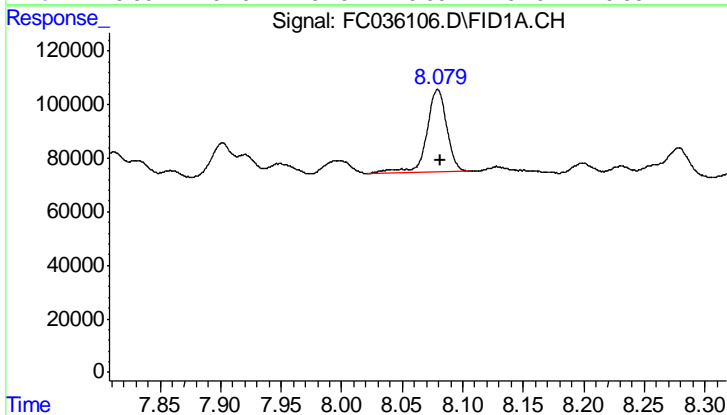
#1 n-Nonane (C9)
R.T.: 3.215 min
Delta R.T.: -0.002 min
Response: 142811
Conc: 1.59 ug/ml



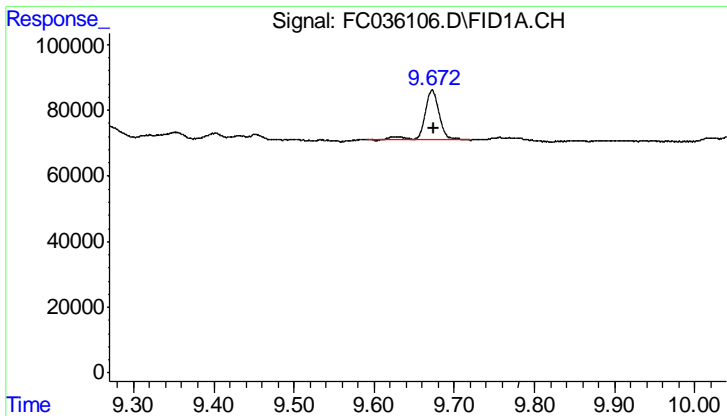
#2 n-Decane (C10)
R.T.: 4.282 min
Delta R.T.: -0.002 min
Response: 144884
Conc: 1.61 ug/ml



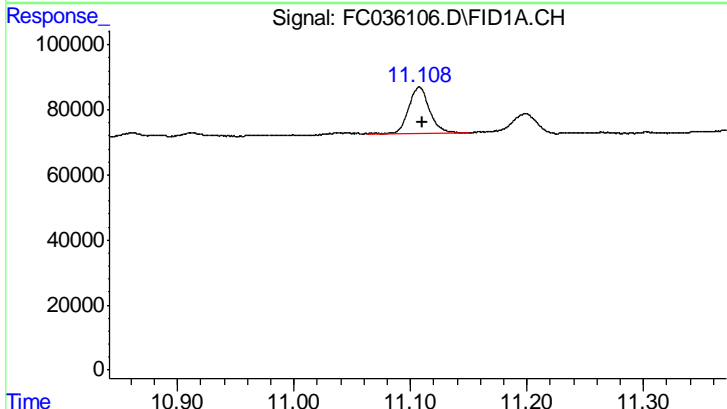
#4 n-Dodecane (C12)
R.T.: 6.294 min
Delta R.T.: -0.002 min
Response: 405586
Conc: 4.37 ug/ml



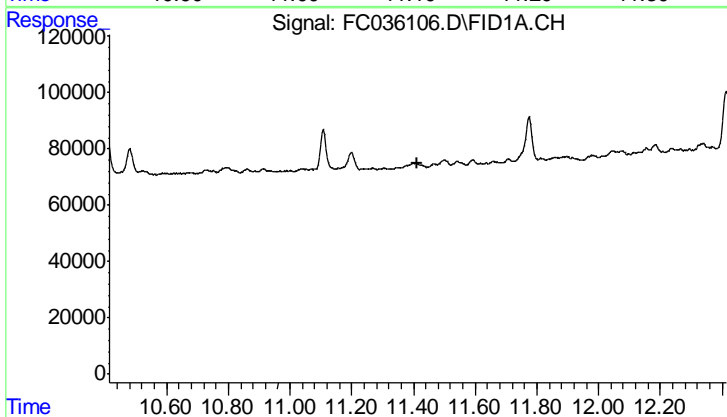
#6 n-Tetradecane (C14)
R.T.: 8.079 min
Delta R.T.: -0.002 min
Response: 353629
Conc: 3.73 ug/ml



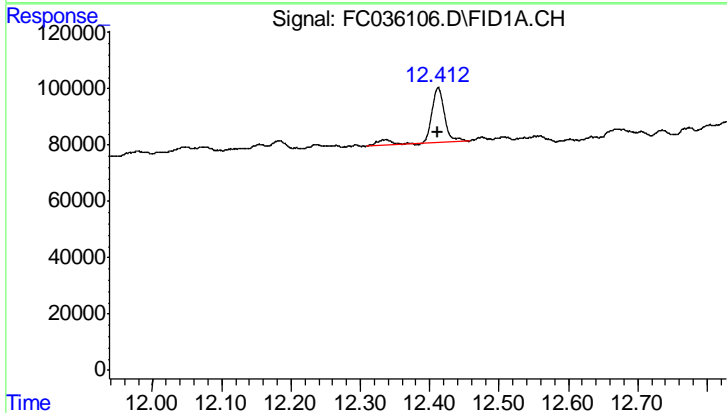
#7 n-Hexadecane (C16)
 R.T.: 9.672 min
 Delta R.T.: -0.003 min
 Response: 194913
 Conc: 2.05 ug/ml



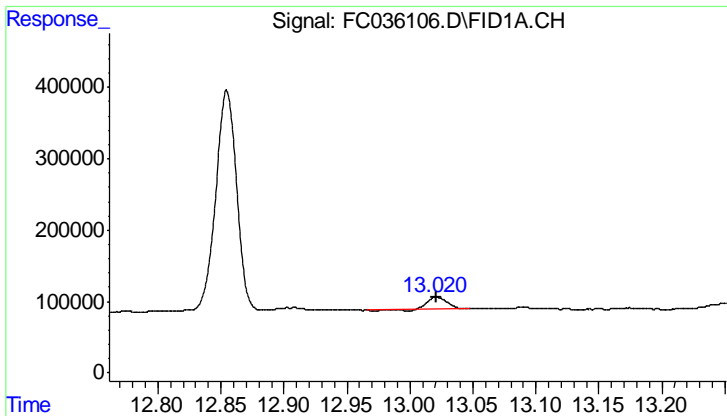
#8 n-Octadecane (C18)
 R.T.: 11.107 min
 Delta R.T.: -0.002 min
 Response: 172268
 Conc: 1.75 ug/ml



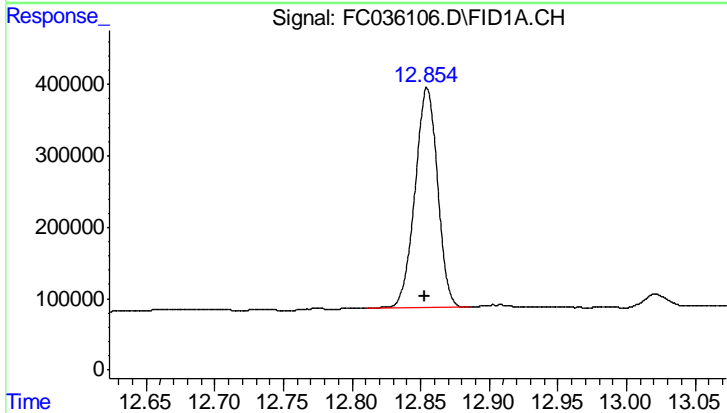
#9 ortho-Terphenyl (SURR)
 R.T.: 0.000 min
 Exp R.T.: 11.414 min
 Response: 0
 Conc: N.D.



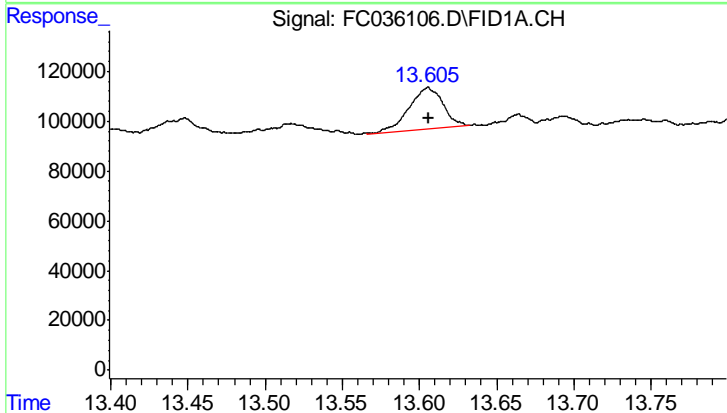
#10 n-Eicosane (C20)
 R.T.: 12.412 min
 Delta R.T.: 0.000 min
 Response: 282155
 Conc: 2.92 ug/ml



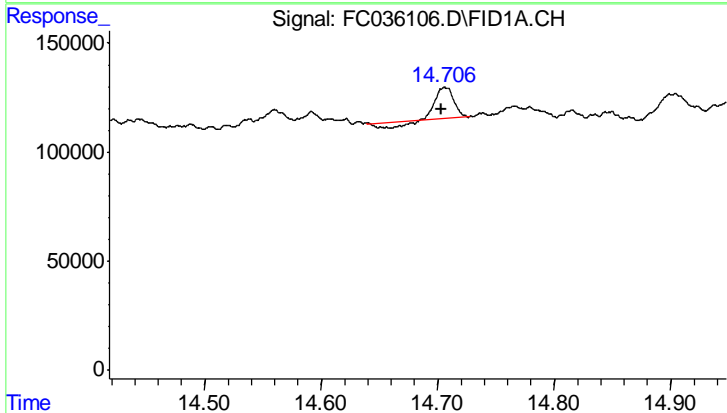
#11 n-Heneicosane (C21)
 R.T.: 13.021 min
 Delta R.T.: 0.000 min
 Response: 182387
 Conc: 1.94 ug/ml



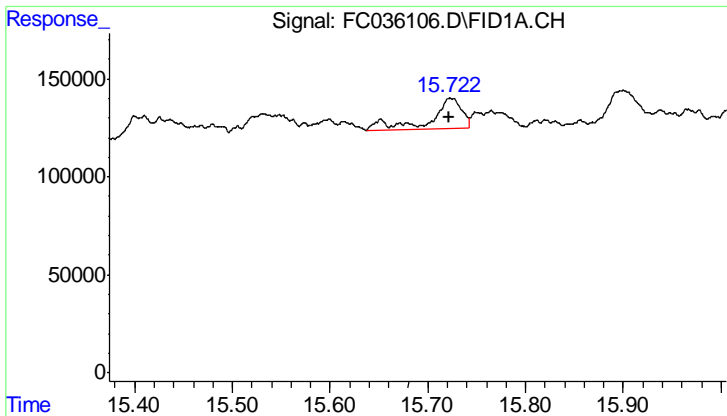
#12 1-chlorooctadecane (SURRE)
 R.T.: 12.855 min
 Delta R.T.: 0.001 min
 Response: 3519655
 Conc: 43.13 ug/ml



#13 n-Docosane (C22)
 R.T.: 13.606 min
 Delta R.T.: 0.000 min
 Response: 256714
 Conc: 2.76 ug/ml

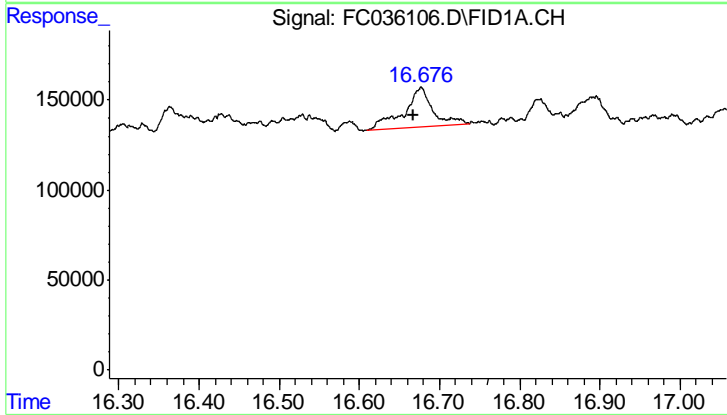


#14 n-Tetracosane (C24)
 R.T.: 14.706 min
 Delta R.T.: 0.003 min
 Response: 129014
 Conc: 1.41 ug/ml



#15 n-Hexacosane (C26)

R.T.: 15.724 min
Delta R.T.: 0.002 min
Response: 343278
Conc: 3.83 ug/ml



#16 n-Octacosane (C28)

R.T.: 16.677 min
Delta R.T.: 0.009 min
Response: 549548
Conc: 6.04 ug/ml