

Data Path : Z:\pestpcbsrv\HPCHEM1\FID\_C\Data\FC082819AL\  
 Data File : FC043174.D  
 Signal(s) : FID1A.CH  
 Acq On : 29 Aug 2019 00:18  
 Operator : DD\AJ  
 Sample : PB122612BL  
 Misc :  
 ALS Vial : 15 Sample Multiplier: 1

Instrument :  
 FID\_C  
 ClientSampleId :

Manual Integrations  
**APPROVED**  
 Ankita  
 8/29/2019 11:41:13 AM

Integration File: autoint1.e  
 Quant Time: Aug 29 06:58:32 2019  
 Quant Method : Z:\pestpcbsrv\HPCHEM1\FID\_C\Method\Alaphatic EPH 082719.M  
 Quant Title : GC Extractables  
 QLast Update : Wed Aug 28 04:05:56 2019  
 Response via : Initial Calibration  
 Integrator: ChemStation 6890 Scale Mode: Large solvent peaks clipped

Volume Inj. : 1 ul  
 Signal Phase : Rxi-1ms  
 Signal Info : 20M x 0.18mm x 0.18um

| Compound                       | R.T.   | Response   | Conc Units    |
|--------------------------------|--------|------------|---------------|
| System Monitoring Compounds    |        |            |               |
| 9) S ortho-Terphenyl (SURR)    | 11.630 | 2460498    | 17.185 ug/mlm |
| Spiked Amount                  | 50.000 | Recovery = | 34.37%        |
| 12) S 1-chlorooctadecane (S... | 13.057 | 6089210    | 55.736 ug/ml  |
| Spiked Amount                  | 50.000 | Recovery = | 111.47%       |

Target Compounds  
 -----

(f)=RT Delta > 1/2 Window (m)=manual int.

Data Path : Z:\pestpcbsrv\HPCHEM1\FID\_C\Data\FC082819AL\  
Data File : FC043174.D  
Signal(s) : FID1A.CH  
Acq On : 29 Aug 2019 00:18  
Operator : DD\AJ  
Sample : PB122612BL  
Misc :  
ALS Vial : 15 Sample Multiplier: 1

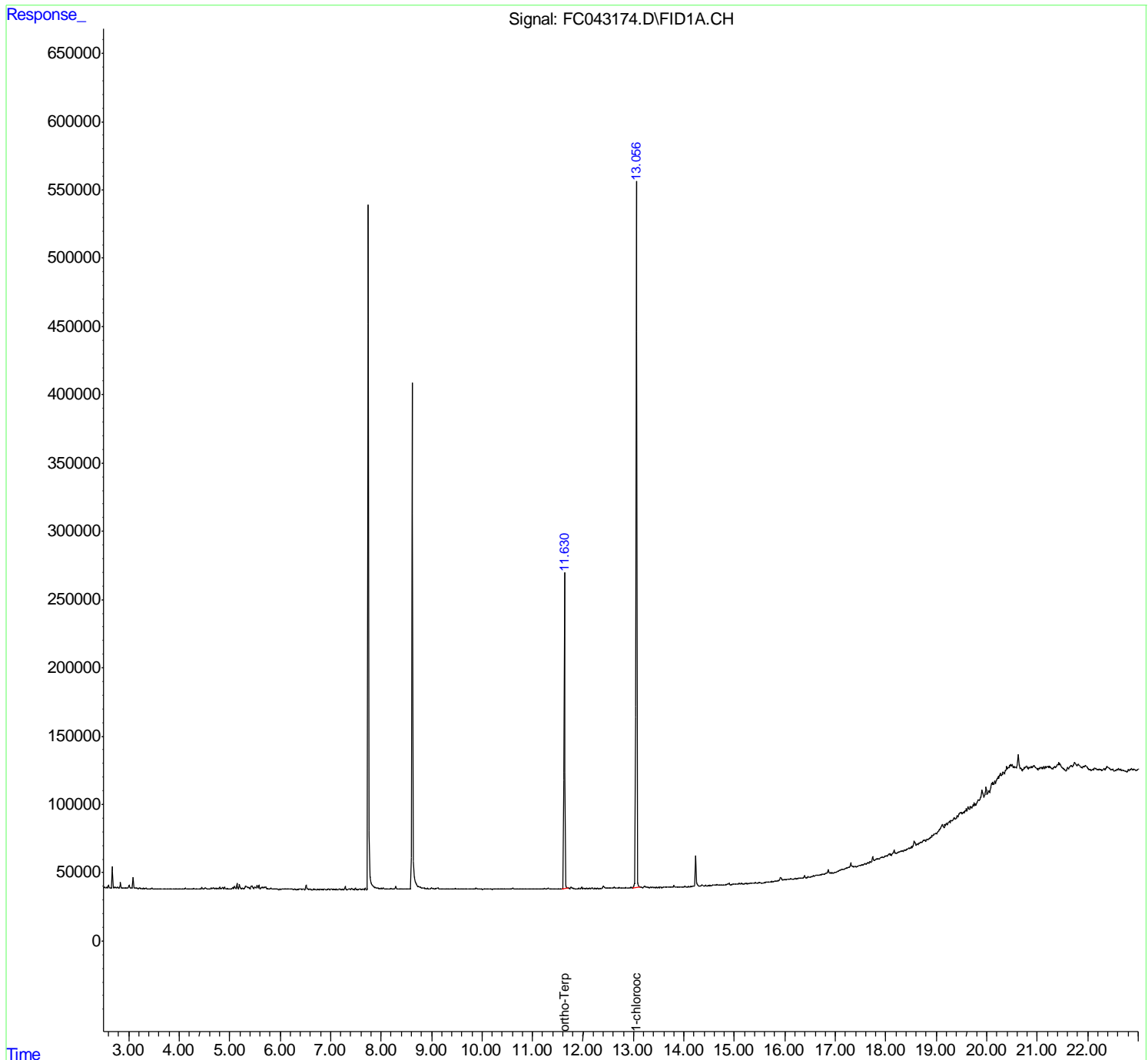
Instrument :  
FID\_C  
ClientSampled :

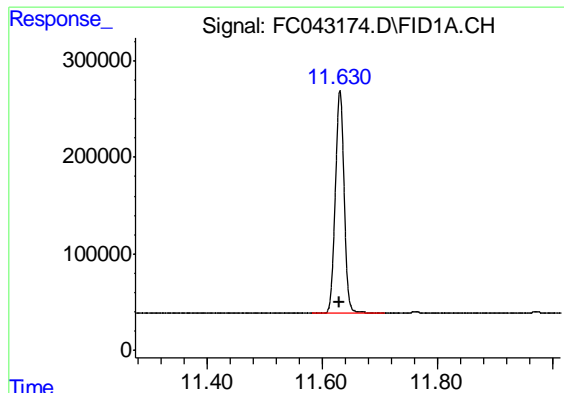
Manual Integrations  
APPROVED

Ankita  
8/29/2019 11:41:13 AM

Integration File: autoint1.e  
Quant Time: Aug 29 06:58:32 2019  
Quant Method : Z:\pestpcbsrv\HPCHEM1\FID\_C\Method\Aliphatic EPH 082719.M  
Quant Title : GC Extractables  
QLast Update : Wed Aug 28 04:05:56 2019  
Response via : Initial Calibration  
Integrator: ChemStation 6890 Scale Mode: Large solvent peaks clipped

Volume Inj. : 1 ul  
Signal Phase : Rxi-1ms  
Signal Info : 20M x 0.18mm x 0.18um





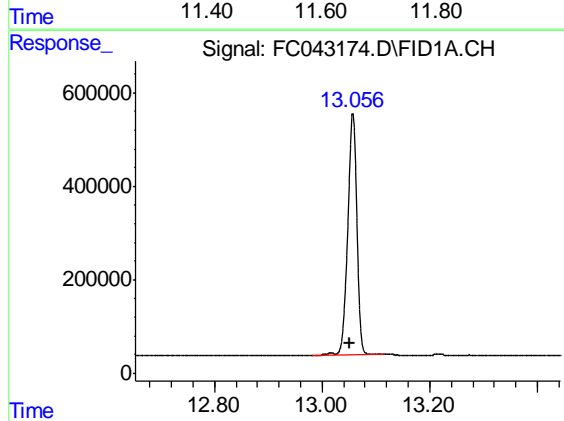
#9 ortho-Terphenyl (SURR)

R.T.: 11.630 min  
Delta R.T.: 0.001 min  
Response: 2460498  
Conc: 17.18 ug/ml m

Instrument :  
FID\_C  
ClientSampleId :

Manual Integrations  
APPROVED

Ankita  
8/29/2019 11:41:13 AM



#12 1-chlorooctadecane (SURR)

R.T.: 13.057 min  
Delta R.T.: 0.006 min  
Response: 6089210  
Conc: 55.74 ug/ml