

Data Path : Z:\pestpcbsrv\HPCHEM1\FID\_C\Data\FC082819AL\  
 Data File : FC043186.D  
 Signal(s) : FID1A.CH  
 Acq On : 29 Aug 2019 8:08  
 Operator : DD\AJ  
 Sample : K4093-04DL 5X  
 Misc :  
 ALS Vial : 25 Sample Multiplier: 1

Instrument :  
 FID\_C  
 ClientSampleId :

Manual Integrations  
 APPROVED

Ankita  
 8/29/2019 11:41:17 AM

Integration File: autoint1.e  
 Quant Time: Aug 29 08:33:37 2019  
 Quant Method : Z:\pestpcbsrv\HPCHEM1\FID\_C\Method\Alaphatic EPH 082719.M  
 Quant Title : GC Extractables  
 QLast Update : Wed Aug 28 04:05:56 2019  
 Response via : Initial Calibration  
 Integrator: ChemStation 6890 Scale Mode: Large solvent peaks clipped

Volume Inj. : 1 ul  
 Signal Phase : Rxi-1ms  
 Signal Info : 20M x 0.18mm x 0.18um

Compound	R.T.	Response	Conc Units
System Monitoring Compounds			
9) S ortho-Terphenyl (SURR)	11.625	528055	3.688 ug/mlm
Spiked Amount	50.000	Recovery =	7.38%
12) S 1-chlorooctadecane (S...	13.047	564479	5.167 ug/mlm
Spiked Amount	50.000	Recovery =	10.33%

Target Compounds

(f)=RT Delta > 1/2 Window

(m)=manual int.

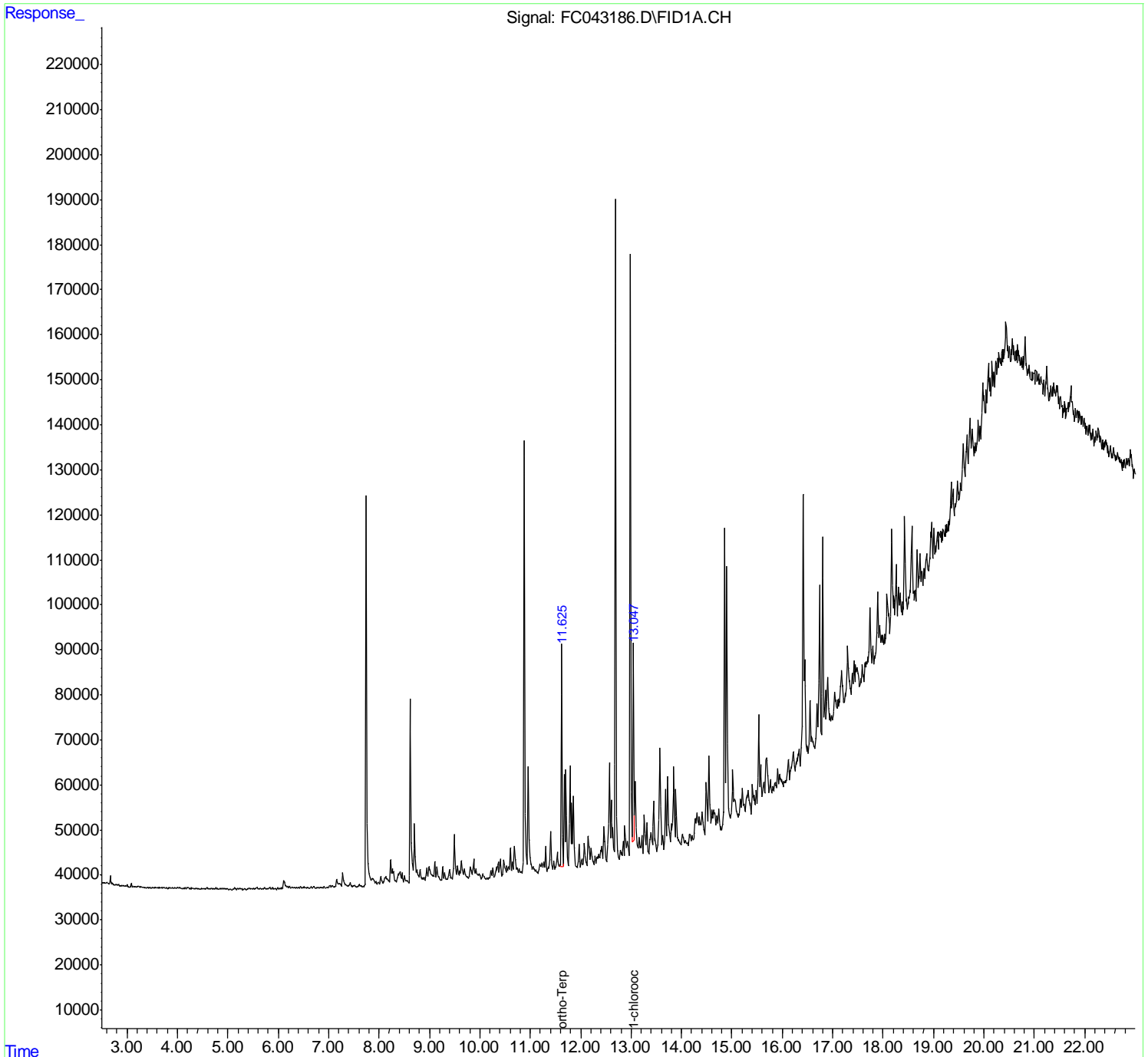
Data Path : Z:\pestpcbsrv\HPCHEM1\FID\_C\Data\FC082819AL\  
 Data File : FC043186.D  
 Signal(s) : FID1A.CH  
 Acq On : 29 Aug 2019 8:08  
 Operator : DD\AJ  
 Sample : K4093-04DL 5X  
 Misc :  
 ALS Vial : 25 Sample Multiplier: 1

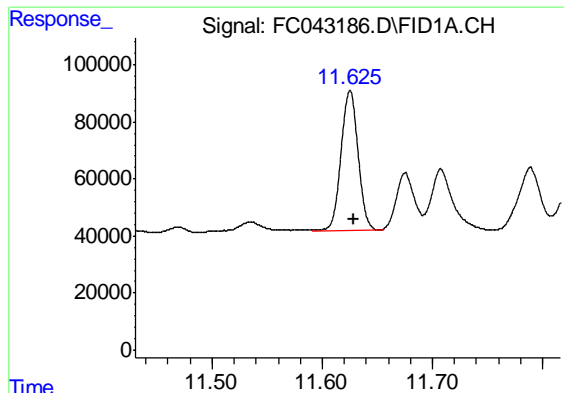
Instrument :  
 FID\_C  
 ClientSampled :

Manual Integrations  
**APPROVED**  
 Ankita  
 8/29/2019 11:41:17 AM

Integration File: autoint1.e  
 Quant Time: Aug 29 08:33:37 2019  
 Quant Method : Z:\pestpcbsrv\HPCHEM1\FID\_C\Method\Alaphatic EPH 082719.M  
 Quant Title : GC Extractables  
 QLast Update : Wed Aug 28 04:05:56 2019  
 Response via : Initial Calibration  
 Integrator: ChemStation 6890 Scale Mode: Large solvent peaks clipped

Volume Inj. : 1 ul  
 Signal Phase : Rxi-1ms  
 Signal Info : 20M x 0.18mm x 0.18um





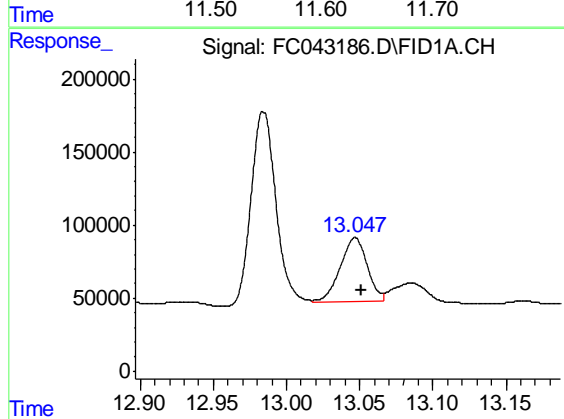
#9 ortho-Terphenyl (SURR)

R.T.: 11.625 min  
Delta R.T.: -0.004 min  
Response: 528055  
Conc: 3.69 ug/ml m

Instrument :  
FID\_C  
ClientSampled :

Manual Integrations  
APPROVED

Ankita  
8/29/2019 11:41:17 AM



#12 1-chlorooctadecane (SURR)

R.T.: 13.047 min  
Delta R.T.: -0.004 min  
Response: 564479  
Conc: 5.17 ug/ml m