

Data Path : Z:\pestpcbsrv\HPCHEM1\FID_C\Data\FC082919AL\
 Data File : FC043219.D
 Signal(s) : FID1A.CH
 Acq On : 30 Aug 2019 7:20
 Operator : DD\AJ
 Sample : K4580-14
 Misc :
 ALS Vial : 21 Sample Multiplier: 1

Instrument :
 FID_C
 ClientSampleId :

Manual Integrations
APPROVED
 Ankita
 8/30/2019 1:36:50 PM

Integration File: autoint1.e
 Quant Time: Aug 30 08:10:00 2019
 Quant Method : Z:\pestpcbsrv\HPCHEM1\FID_C\Method\Alaphatic EPH 082719.M
 Quant Title : GC Extractables
 QLast Update : Wed Aug 28 04:05:56 2019
 Response via : Initial Calibration
 Integrator: ChemStation 6890 Scale Mode: Large solvent peaks clipped

Volume Inj. : 1 ul
 Signal Phase : Rxi-1ms
 Signal Info : 20M x 0.18mm x 0.18um

Compound	R.T.	Response	Conc Units
System Monitoring Compounds			
9) S ortho-Terphenyl (SURR)	11.629	7046901	49.217 ug/ml
Spiked Amount	50.000	Recovery =	98.43%
12) S 1-chlorooctadecane (S...	13.054	4900008	44.851 ug/mlm
Spiked Amount	50.000	Recovery =	89.70%

Target Compounds

(f)=RT Delta > 1/2 Window

(m)=manual int.

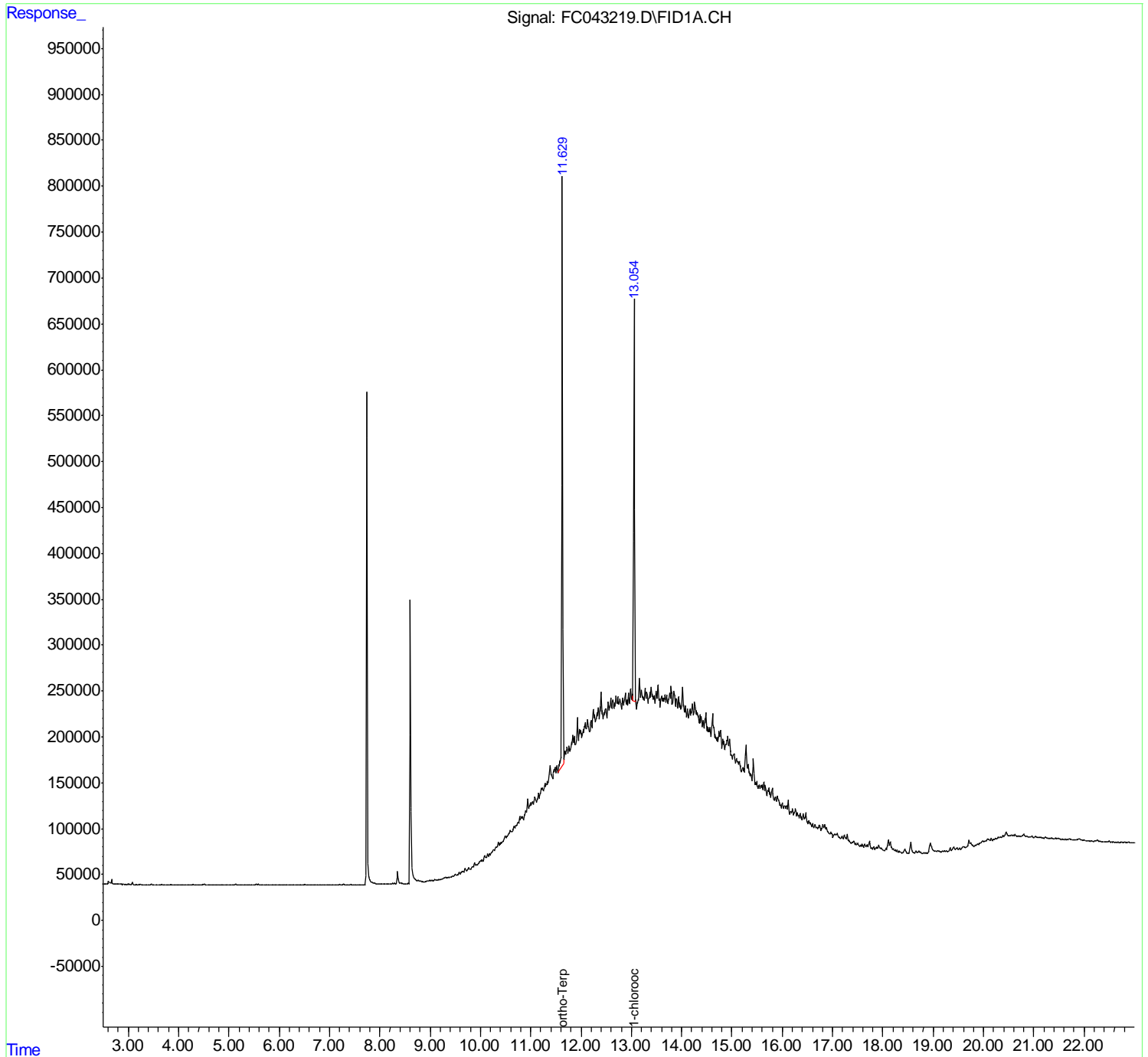
Data Path : Z:\pestpcbsrv\HPCHEM1\FID_C\Data\FC082919AL\
 Data File : FC043219.D
 Signal(s) : FID1A.CH
 Acq On : 30 Aug 2019 7:20
 Operator : DD\AJ
 Sample : K4580-14
 Misc :
 ALS Vial : 21 Sample Multiplier: 1

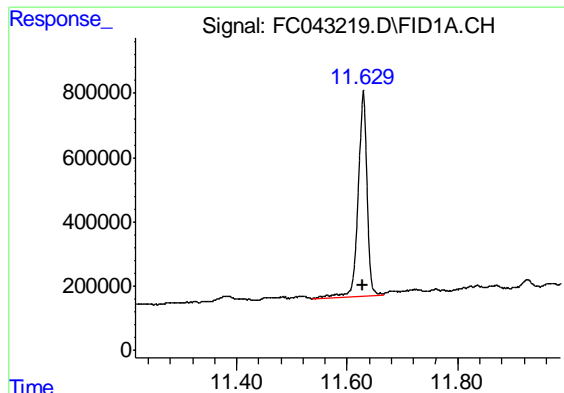
Instrument :
 FID_C
 ClientSampled :

Manual Integrations
APPROVED
 Ankita
 8/30/2019 1:36:50 PM

Integration File: autoint1.e
 Quant Time: Aug 30 08:10:00 2019
 Quant Method : Z:\pestpcbsrv\HPCHEM1\FID_C\Method\Aliphatic EPH 082719.M
 Quant Title : GC Extractables
 QLast Update : Wed Aug 28 04:05:56 2019
 Response via : Initial Calibration
 Integrator: ChemStation 6890 Scale Mode: Large solvent peaks clipped

Volume Inj. : 1 ul
 Signal Phase : Rxi-1ms
 Signal Info : 20M x 0.18mm x 0.18um





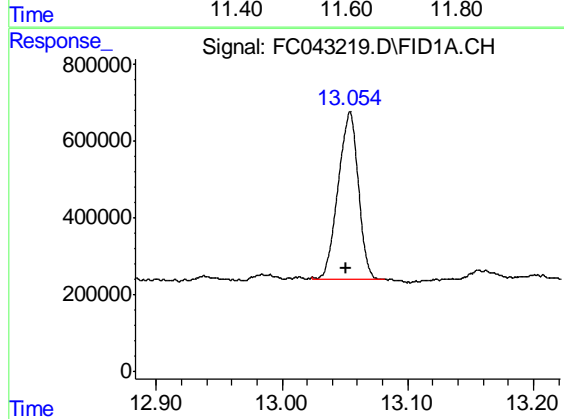
#9 ortho-Terphenyl (SURR)

R.T.: 11.629 min
Delta R.T.: 0.000 min
Response: 7046901
Conc: 49.22 ug/ml

Instrument :
FID_C
ClientSampled :

Manual Integrations
APPROVED

Ankita
8/30/2019 1:36:50 PM



#12 1-chlorooctadecane (SURR)

R.T.: 13.054 min
Delta R.T.: 0.003 min
Response: 4900008
Conc: 44.85 ug/ml m