

Data Path : Z:\pestpcbsrv\HPCHEM1\FID\_C\Data\FC083022AL\  
 Data File : FC061362.D  
 Signal(s) : FID1A.ch  
 Acq On : 30 Aug 2022 19:52  
 Operator : YP/AJ  
 Sample : N4416-01DL 5X  
 Misc :  
 ALS Vial : 12 Sample Multiplier: 1

Instrument :  
 FID\_C  
 ClientSampleId :

Integration File: autoint1.e  
 Quant Time: Aug 31 03:37:47 2022  
 Quant Method : Z:\pestpcbsrv\HPCHEM1\FID\_C\Method\Aliphatic EPH 082222.M  
 Quant Title : GC Extractables  
 QLast Update : Tue Aug 23 05:32:18 2022  
 Response via : Initial Calibration  
 Integrator: ChemStation

Volume Inj. : 1 ul  
 Signal Phase : Rxi-1ms  
 Signal Info : 20M x 0.18mm x 0.18um

Compound	R.T.	Response	Conc Units
-----			
System Monitoring Compounds			
9) S ortho-Terphenyl (SURR)	11.641	1024924	5.790 ug/ml
Spiked Amount	50.000	Recovery	= 11.58%
12) S 1-chlorooctadecane (S...	13.072	792441	5.658 ug/ml
Spiked Amount	50.000	Recovery	= 11.32%
Target Compounds			
14) T n-Tetracosane (C24)	14.898	63466	0.410 ug/ml
18) T n-Dotriacontane (C32)	18.608	69855	0.636 ug/ml
-----			

(f)=RT Delta > 1/2 Window

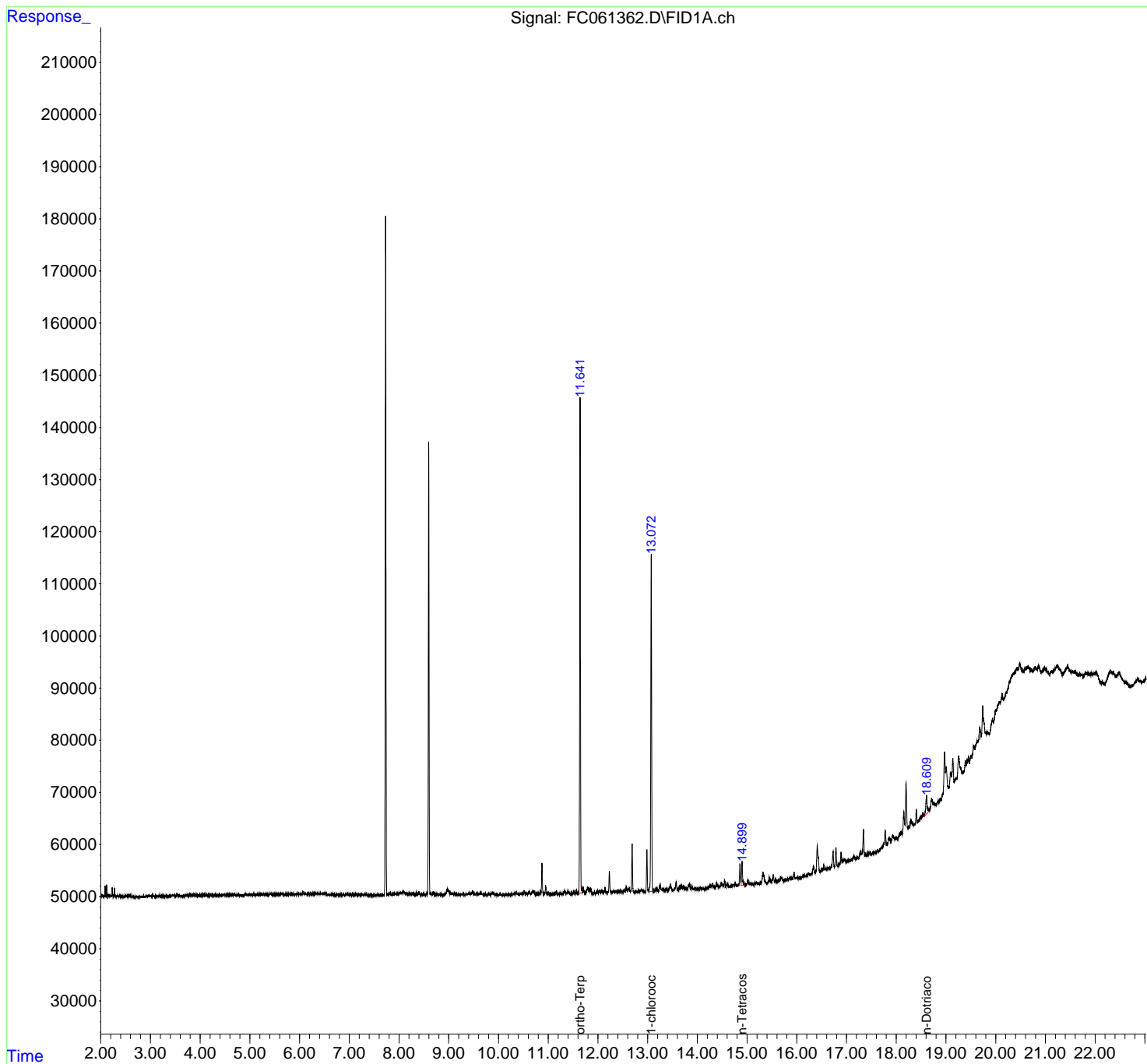
(m)=manual int.

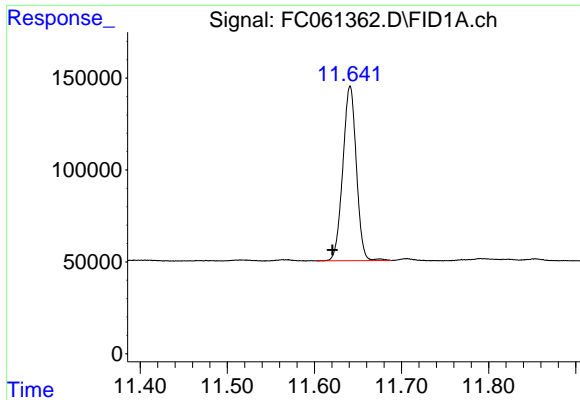
Data Path : Z:\pestpcbsrv\HPCHEM1\FID\_C\Data\FC083022AL\  
 Data File : FC061362.D  
 Signal(s) : FID1A.ch  
 Acq On : 30 Aug 2022 19:52  
 Operator : YP/AJ  
 Sample : N4416-01DL 5X  
 Misc :  
 ALS Vial : 12 Sample Multiplier: 1

Instrument :  
 FID\_C  
 ClientSampleId :

Integration File: autoint1.e  
 Quant Time: Aug 31 03:37:47 2022  
 Quant Method : Z:\pestpcbsrv\HPCHEM1\FID\_C\Method\Aliphatic EPH 082222.M  
 Quant Title : GC Extractables  
 QLast Update : Tue Aug 23 05:32:18 2022  
 Response via : Initial Calibration  
 Integrator: ChemStation

Volume Inj. : 1 ul  
 Signal Phase : Rxi-1ms  
 Signal Info : 20M x 0.18mm x 0.18um

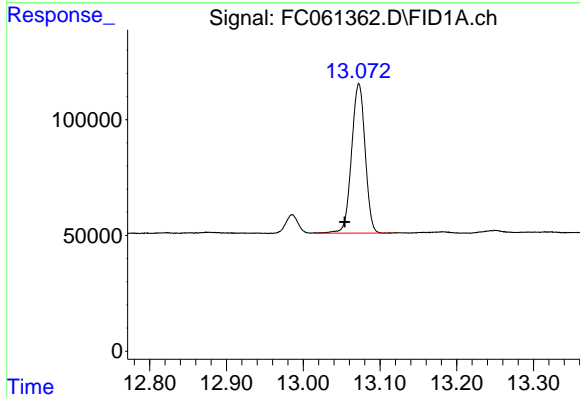




#9 ortho-Terphenyl (SURR)

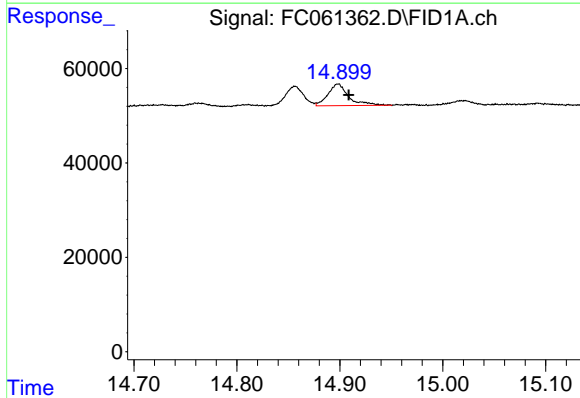
R.T.: 11.641 min  
 Delta R.T.: 0.020 min  
 Response: 1024924  
 Conc: 5.79 ug/ml

Instrument :  
 FID\_C  
 ClientSampleId :



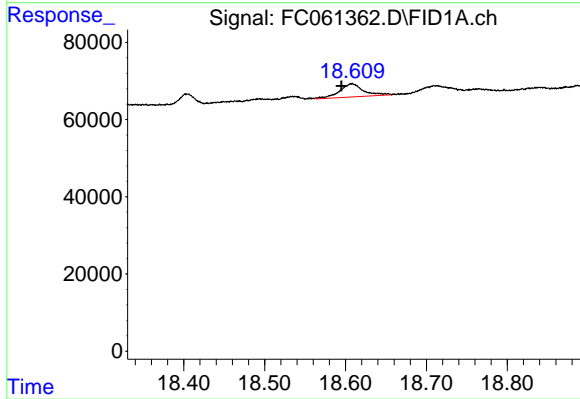
#12 1-chlorooctadecane (SURR)

R.T.: 13.072 min  
 Delta R.T.: 0.018 min  
 Response: 792441  
 Conc: 5.66 ug/ml



#14 n-Tetracosane (C24)

R.T.: 14.898 min  
 Delta R.T.: -0.011 min  
 Response: 63466  
 Conc: 0.41 ug/ml



#18 n-Dotriacontane (C32)

R.T.: 18.608 min  
 Delta R.T.: 0.013 min  
 Response: 69855  
 Conc: 0.64 ug/ml