

Data Path : Z:\pestpcbsrv\HPCHEM1\FID_C\Data\FC083122AL\
 Data File : FC061378.D
 Signal(s) : FID1A.ch
 Acq On : 31 Aug 2022 09:51
 Operator : YP/AJ
 Sample : I.BLK
 Misc :
 ALS Vial : 1 Sample Multiplier: 1

Instrument :
 FID_C
 ClientSampleId :
 I.BLK

Integration File: autoint1.e
 Quant Time: Sep 01 05:16:19 2022
 Quant Method : Z:\pestpcbsrv\HPCHEM1\FID_C\Method\Aliphatic EPH 082222.M
 Quant Title : GC Extractables
 QLast Update : Wed Aug 31 11:58:37 2022
 Response via : Initial Calibration
 Integrator: ChemStation

Volume Inj. : 1 ul
 Signal Phase : Rxi-1ms
 Signal Info : 20M x 0.18mm x 0.18um

Compound	R.T.	Response	Conc Units

System Monitoring Compounds			
Target Compounds			

(f)=RT Delta > 1/2 Window

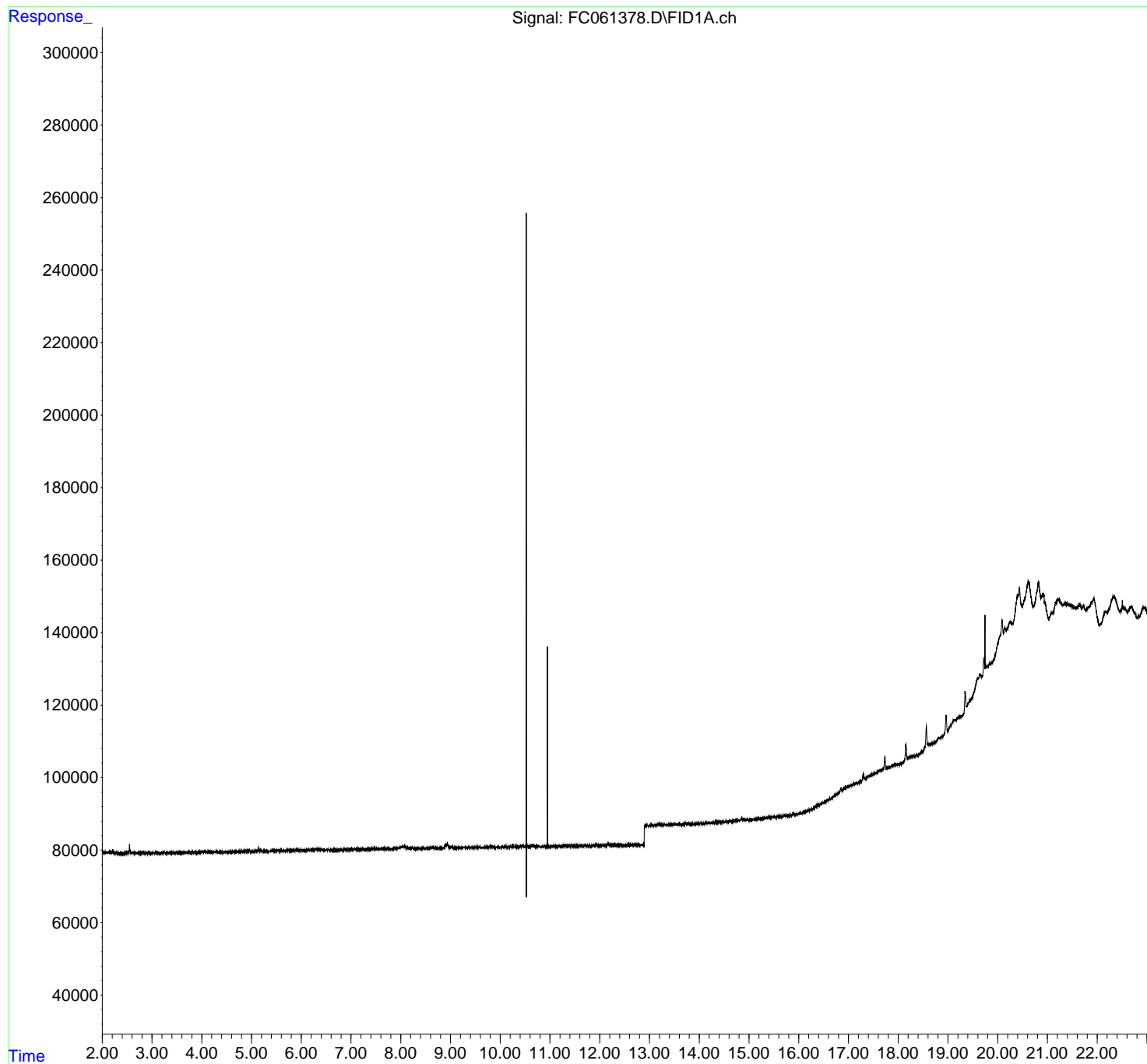
(m)=manual int.

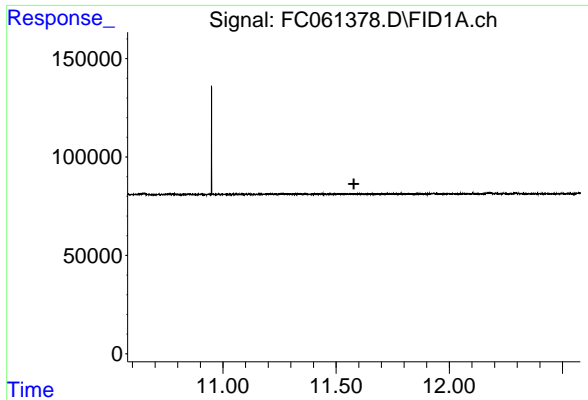
Data Path : Z:\pestpcbsrv\HPCHEM1\FID_C\Data\FC083122AL\
Data File : FC061378.D
Signal(s) : FID1A.ch
Acq On : 31 Aug 2022 09:51
Operator : YP/AJ
Sample : I.BLK
Misc :
ALS Vial : 1 Sample Multiplier: 1

Instrument :
FID_C
ClientSampleId :
I.BLK

Integration File: autoint1.e
Quant Time: Sep 01 05:16:19 2022
Quant Method : Z:\pestpcbsrv\HPCHEM1\FID_C\Method\Aliphatic EPH 082222.M
Quant Title : GC Extractables
QLast Update : Wed Aug 31 11:58:37 2022
Response via : Initial Calibration
Integrator: ChemStation

Volume Inj. : 1 ul
Signal Phase : Rxi-1ms
Signal Info : 20M x 0.18mm x 0.18um

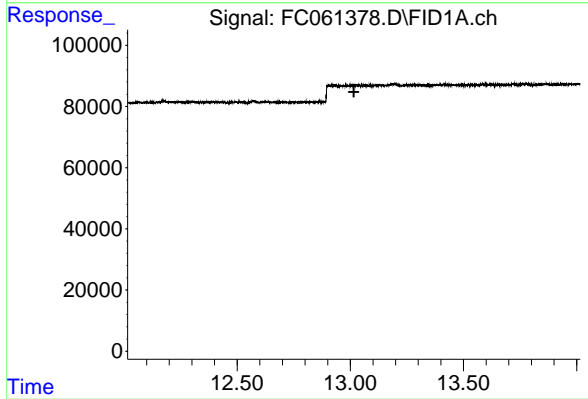




#9 ortho-Terphenyl (SURR)

R.T.: 0.000 min
 Exp R.T. : 11.578 min
 Response: 0
 Conc: N.D.

Instrument :
 FID_C
 ClientSampleId :
 I.BLK



#12 1-chlorooctadecane (SURR)

R.T.: 0.000 min
 Exp R.T. : 13.016 min
 Response: 0
 Conc: N.D.