

Data Path : Z:\pestpcbsrv\HPCHEM1\FID_C\Data\FC090122AL\
 Data File : FC061408.D
 Signal(s) : FID1A.ch
 Acq On : 01 Sep 2022 15:22
 Operator : YP/AJ
 Sample : N3980-09
 Misc :
 ALS Vial : 9 Sample Multiplier: 1

Instrument :
 FID_C
 ClientSampleId :
 MDL-WATER-03-QT3-2022

Manual Integrations
 APPROVED

Reviewed By :Yogesh Patel 09/02/2022
 Supervised By :Ankita Jodhani 09/02/2022

Integration File: autoint1.e
 Quant Time: Sep 02 01:26:11 2022
 Quant Method : Z:\pestpcbsrv\HPCHEM1\FID_C\Method\Aliphatic EPH 082222.M
 Quant Title : GC Extractables
 QLast Update : Wed Aug 31 11:58:37 2022
 Response via : Initial Calibration
 Integrator: ChemStation

Volume Inj. : 1 ul
 Signal Phase : Rxi-1ms
 Signal Info : 20M x 0.18mm x 0.18um

Compound	R.T.	Response	Conc Units

System Monitoring Compounds			
12) S 1-chlorooctadecane (S... Spiked Amount 50.000	13.019	3615826 Recovery =	25.818 ug/ml 51.64%
Target Compounds			
1) T n-Nonane (C9)	3.333	219939	1.455 ug/ml
2) T n-Decane (C10)	4.401	282080	1.859 ug/ml
4) T n-Dodecane (C12)	6.420	363424	2.347 ug/ml
6) T n-Tetradecane (C14)	8.218	328877	2.103 ug/ml
7) T n-Hexadecane (C16)	9.820	324363	2.071 ug/ml
8) T n-Octadecane (C18)	11.262	330270	2.093 ug/ml
10) T n-Eicosane (C20)	12.572	330861	2.128 ug/ml
11) T n-Heneicosane (C21)	13.185	328984	2.103 ug/ml
13) T n-Docosane (C22)	13.771	332254	2.141 ug/ml
14) T n-Tetracosane (C24)	14.873	348845	2.255 ug/ml
15) T n-Hexacosane (C26)	15.895	326459	2.169 ug/ml
16) T n-Octacosane (C28)	16.844	334691	2.266 ug/ml
17) T n-Tricontane (C30)	17.731	373961	2.708 ug/ml
18) T n-Dotriacontane (C32)	18.563	388144	3.536 ug/mlm
19) T n-Tetratriacontane (C34)	19.346	357855	4.636 ug/mlm
20) T n-Hexatriacontane (C36)	20.086	323371	5.728 ug/mlm
21) T n-Octatriacontane (C38)	20.822	303102	6.534 ug/mlm
22) T n-Tetracontane (C40)	21.738	350197	8.349 ug/mlm

(f)=RT Delta > 1/2 Window

(m)=manual int.

Data Path : Z:\pestpcbsrv\HPCHEM1\FID_C\Data\FC090122AL\
 Data File : FC061408.D
 Signal(s) : FID1A.ch
 Acq On : 01 Sep 2022 15:22
 Operator : YP/AJ
 Sample : N3980-09
 Misc :
 ALS Vial : 9 Sample Multiplier: 1

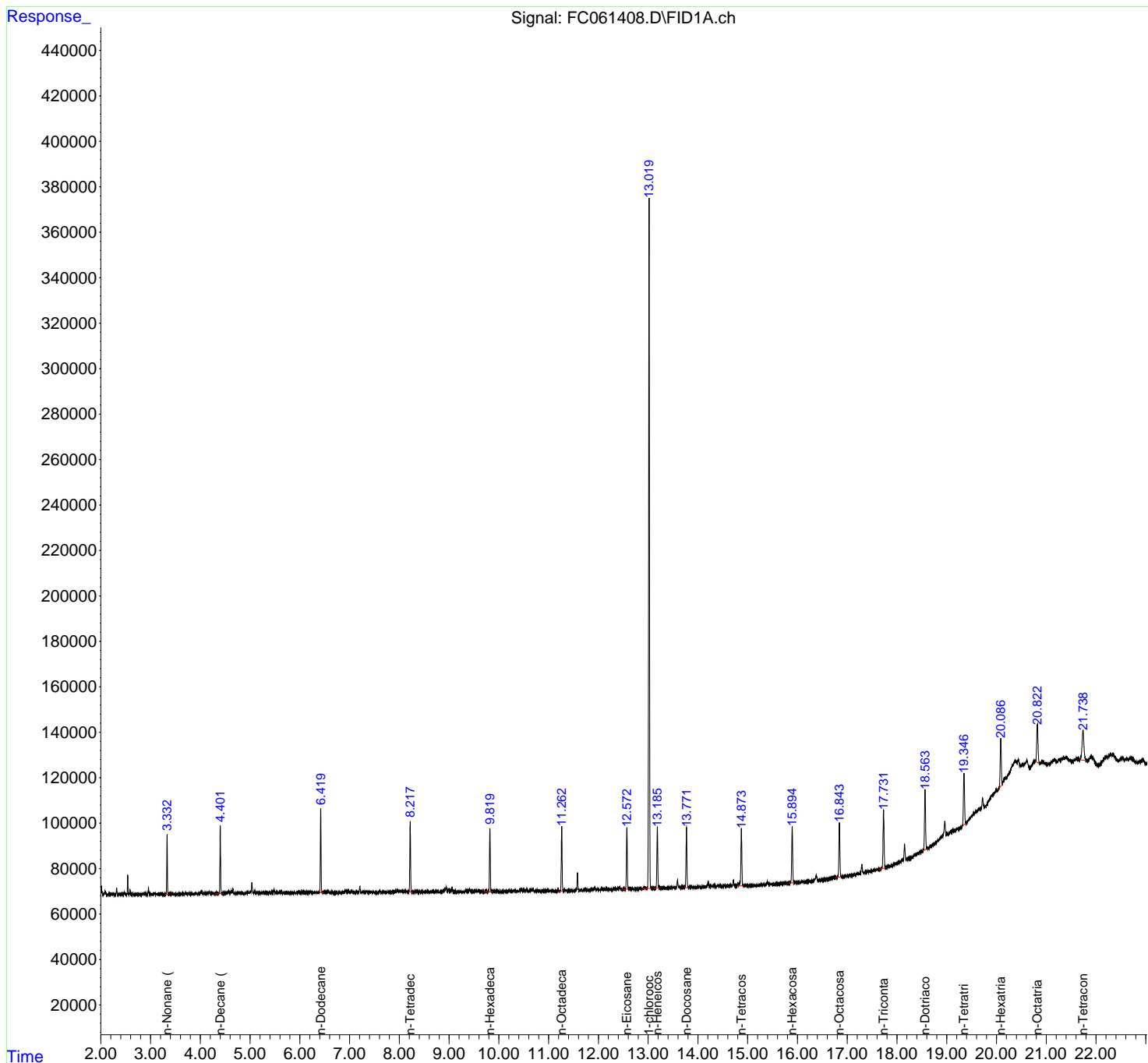
Instrument :
 FID_C
ClientSampleId :
 MDL-WATER-03-QT3-2022

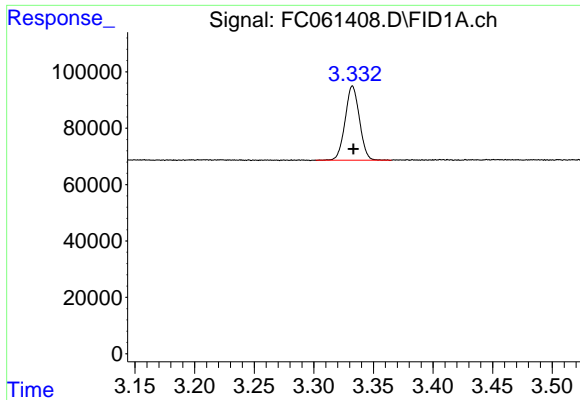
Manual Integrations
APPROVED

Reviewed By :Yogesh Patel 09/02/2022
 Supervised By :Ankita Jodhani 09/02/2022

Integration File: autoint1.e
 Quant Time: Sep 02 01:26:11 2022
 Quant Method : Z:\pestpcbsrv\HPCHEM1\FID_C\Method\Aliphatic EPH 082222.M
 Quant Title : GC Extractables
 QLast Update : Wed Aug 31 11:58:37 2022
 Response via : Initial Calibration
 Integrator: ChemStation

Volume Inj. : 1 ul
 Signal Phase : Rxi-1ms
 Signal Info : 20M x 0.18mm x 0.18um





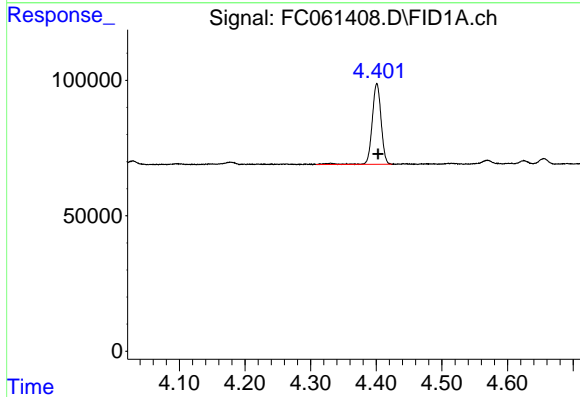
#1 n-Nonane (C9)

R.T.: 3.333 min
 Delta R.T.: 0.000 min
 Response: 219939
 Conc: 1.45 ug/ml

Instrument : FID_C
 Client Sample Id : MDL-WATER-03-QT3-2022

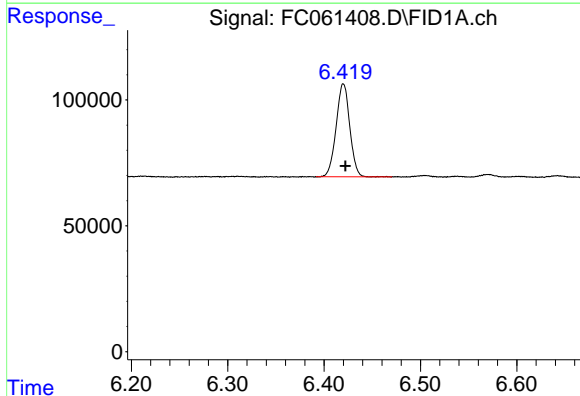
Manual Integrations
 APPROVED

Reviewed By :Yogesh Patel 09/02/2022
 Supervised By :Ankita Jodhani 09/02/2022



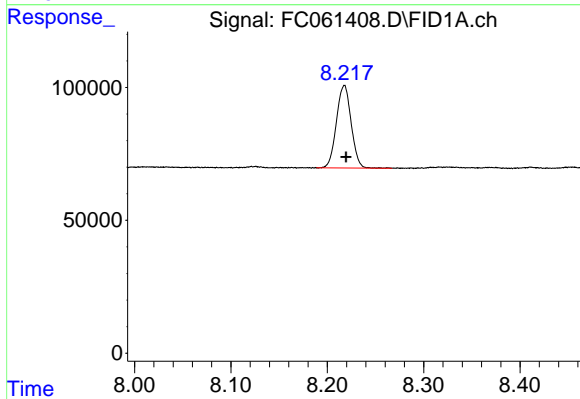
#2 n-Decane (C10)

R.T.: 4.401 min
 Delta R.T.: -0.002 min
 Response: 282080
 Conc: 1.86 ug/ml



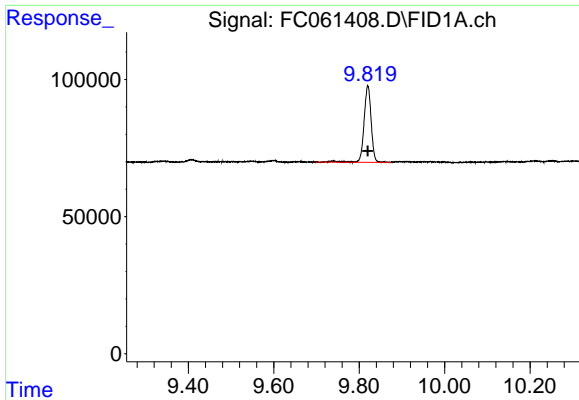
#4 n-Dodecane (C12)

R.T.: 6.420 min
 Delta R.T.: -0.002 min
 Response: 363424
 Conc: 2.35 ug/ml



#6 n-Tetradecane (C14)

R.T.: 8.218 min
 Delta R.T.: -0.002 min
 Response: 328877
 Conc: 2.10 ug/ml

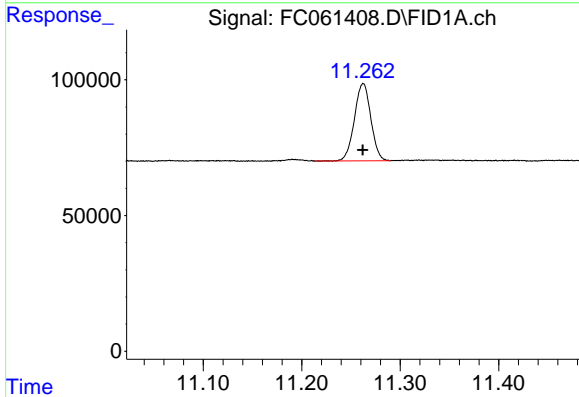


#7 n-Hexadecane (C16)
 R.T.: 9.820 min
 Delta R.T.: 0.000 min
 Response: 324363
 Conc: 2.07 ug/ml

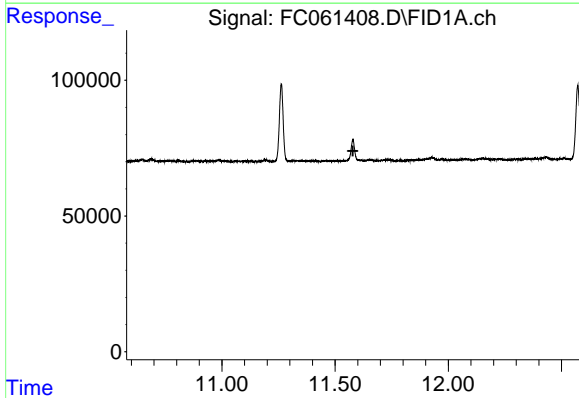
Instrument : FID_C
 Client Sample Id : MDL-WATER-03-QT3-2022

Manual Integrations
 APPROVED

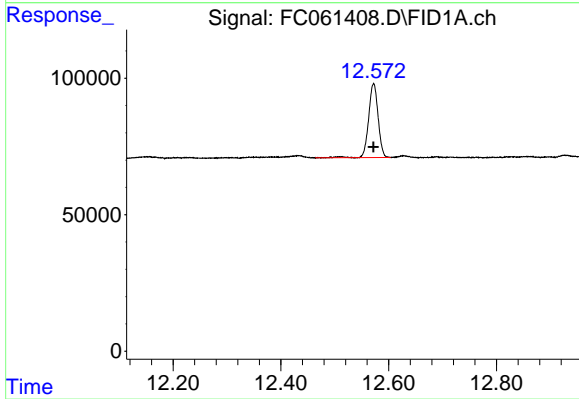
Reviewed By :Yogesh Patel 09/02/2022
 Supervised By :Ankita Jodhani 09/02/2022



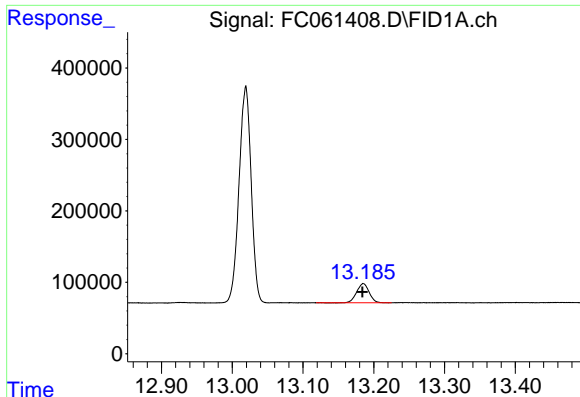
#8 n-Octadecane (C18)
 R.T.: 11.262 min
 Delta R.T.: 0.000 min
 Response: 330270
 Conc: 2.09 ug/ml



#9 ortho-Terphenyl (SURRE)
 R.T.: 0.000 min
 Exp R.T. : 11.578 min
 Response: 0
 Conc: N.D.



#10 n-Eicosane (C20)
 R.T.: 12.572 min
 Delta R.T.: 0.000 min
 Response: 330861
 Conc: 2.13 ug/ml



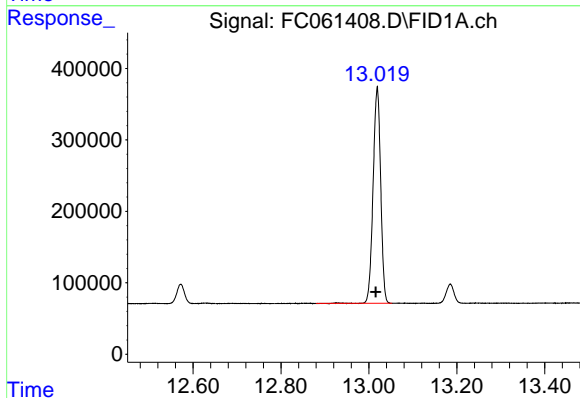
#11 n-Heneicosane (C21)

R.T.: 13.185 min
 Delta R.T.: 0.001 min
 Response: 328984
 Conc: 2.10 ug/ml

Instrument : FID_C
 ClientSampleId : MDL-WATER-03-QT3-2022

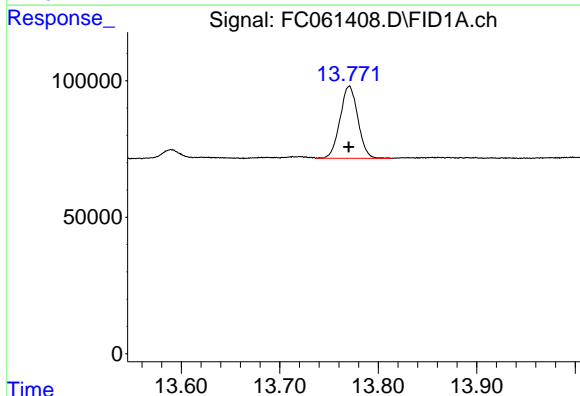
Manual Integrations
 APPROVED

Reviewed By :Yogesh Patel 09/02/2022
 Supervised By :Ankita Jodhani 09/02/2022



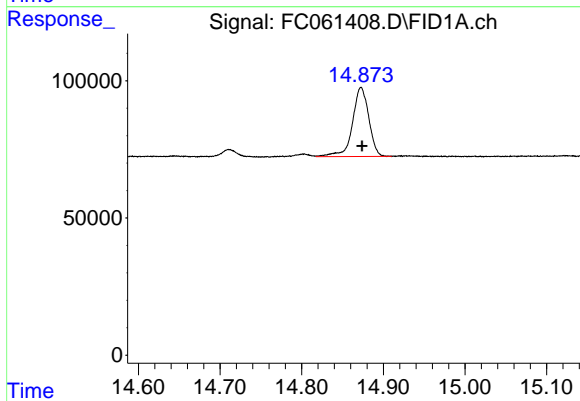
#12 1-chlorooctadecane (SURRE)

R.T.: 13.019 min
 Delta R.T.: 0.003 min
 Response: 3615826
 Conc: 25.82 ug/ml



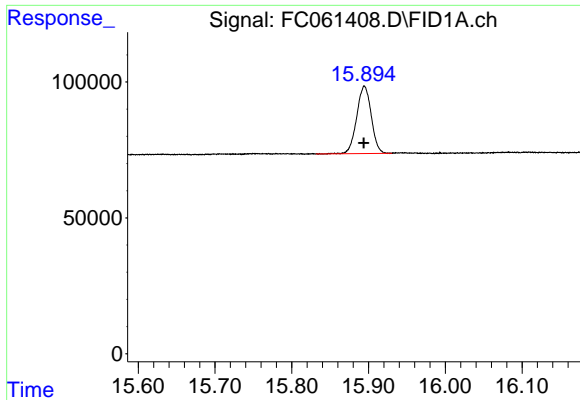
#13 n-Docosane (C22)

R.T.: 13.771 min
 Delta R.T.: 0.000 min
 Response: 332254
 Conc: 2.14 ug/ml



#14 n-Tetracosane (C24)

R.T.: 14.873 min
 Delta R.T.: 0.000 min
 Response: 348845
 Conc: 2.25 ug/ml

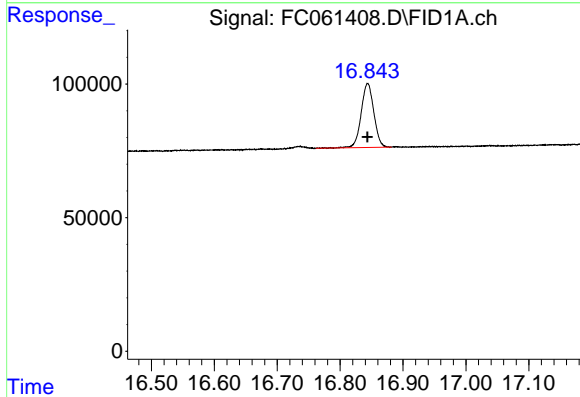


#15 n-Hexacosane (C26)
 R.T.: 15.895 min
 Delta R.T.: 0.000 min
 Response: 326459
 Conc: 2.17 ug/ml

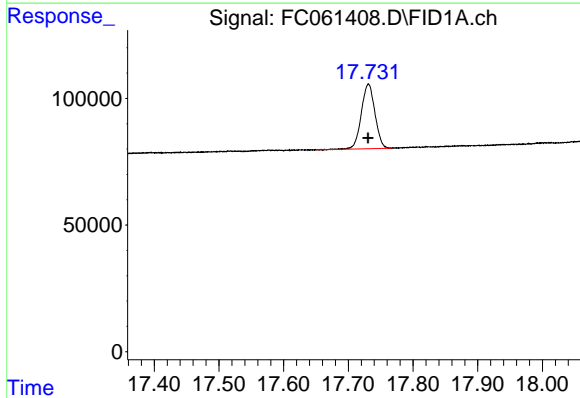
Instrument : FID_C
 ClientSampleId : MDL-WATER-03-QT3-2022

Manual Integrations
 APPROVED

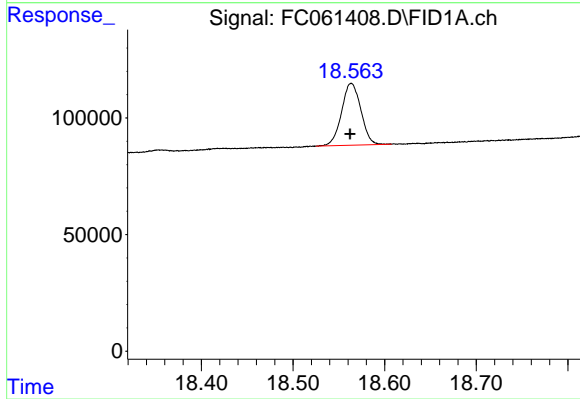
Reviewed By :Yogesh Patel 09/02/2022
 Supervised By :Ankita Jodhani 09/02/2022



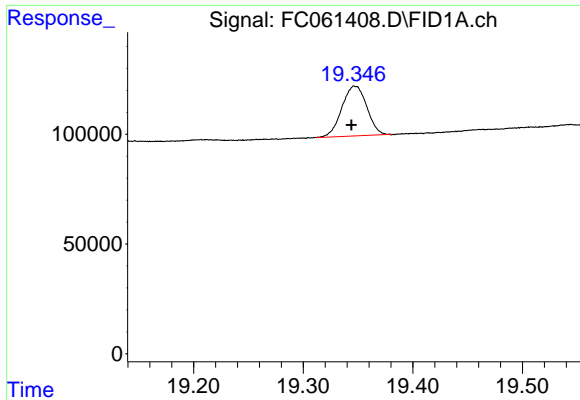
#16 n-Octacosane (C28)
 R.T.: 16.844 min
 Delta R.T.: 0.000 min
 Response: 334691
 Conc: 2.27 ug/ml



#17 n-Tricontane (C30)
 R.T.: 17.731 min
 Delta R.T.: 0.000 min
 Response: 373961
 Conc: 2.71 ug/ml



#18 n-Dotriacontane (C32)
 R.T.: 18.563 min
 Delta R.T.: 0.000 min
 Response: 388144
 Conc: 3.54 ug/ml m



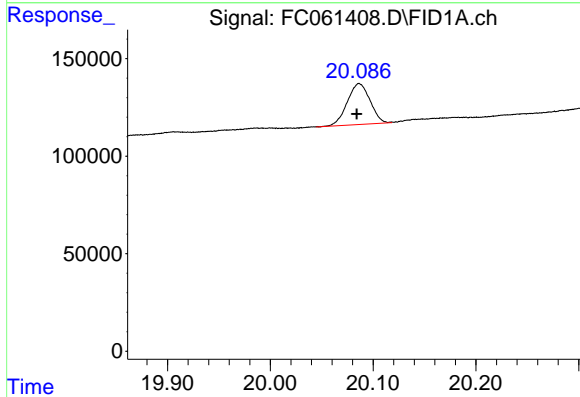
#19 n-Tetratriacontane (C34)

R.T.: 19.346 min
 Delta R.T.: 0.002 min
 Response: 357855
 Conc: 4.64 ug/ml

Instrument :
 FID_C
 ClientSampleId :
 MDL-WATER-03-QT3-2022

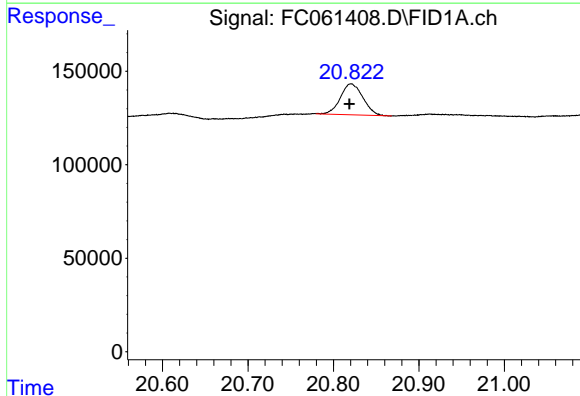
Manual Integrations
 APPROVED

Reviewed By :Yogesh Patel 09/02/2022
 Supervised By :Ankita Jodhani 09/02/2022



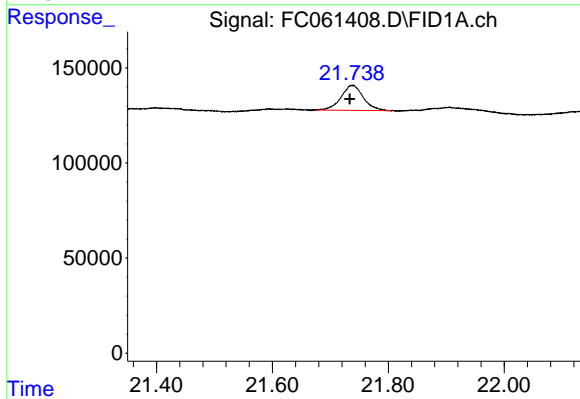
#20 n-Hexatriacontane (C36)

R.T.: 20.086 min
 Delta R.T.: 0.002 min
 Response: 323371
 Conc: 5.73 ug/ml m



#21 n-Octatriacontane (C38)

R.T.: 20.822 min
 Delta R.T.: 0.003 min
 Response: 303102
 Conc: 6.53 ug/ml m



#22 n-Tetracontane (C40)

R.T.: 21.738 min
 Delta R.T.: 0.004 min
 Response: 350197
 Conc: 8.35 ug/ml m