

Data Path : Z:\pestpcbsrv\HPCHEM1\FID_C\Data\FC090319AL\
 Data File : FC043296.D
 Signal(s) : FID1A.CH
 Acq On : 04 Sep 2019 00:22
 Operator : DD\AJ
 Sample : K4601-10
 Misc :
 ALS Vial : 18 Sample Multiplier: 1

Integration File: sample.E
 Quant Time: Sep 04 01:48:25 2019
 Quant Method : Z:\pestpcbsrv\HPCHEM1\FID_C\Method\Alaphatic EPH 082719.M
 Quant Title : GC Extractables
 QLast Update : Wed Aug 28 04:05:56 2019
 Response via : Initial Calibration
 Integrator: ChemStation 6890 Scale Mode: Large solvent peaks clipped

Volume Inj. : 1 ul
 Signal Phase : Rxi-1ms
 Signal Info : 20M x 0.18mm x 0.18um

Compound	R.T.	Response	Conc Units
System Monitoring Compounds			
9) S ortho-Terphenyl (SURR)	11.623	7194018	50.245 ug/mlm
Spiked Amount	50.000	Recovery	= 100.49%
12) S 1-chlorooctadecane (S...	13.047	5301134	48.523 ug/mlm
Spiked Amount	50.000	Recovery	= 97.05%

Target Compounds

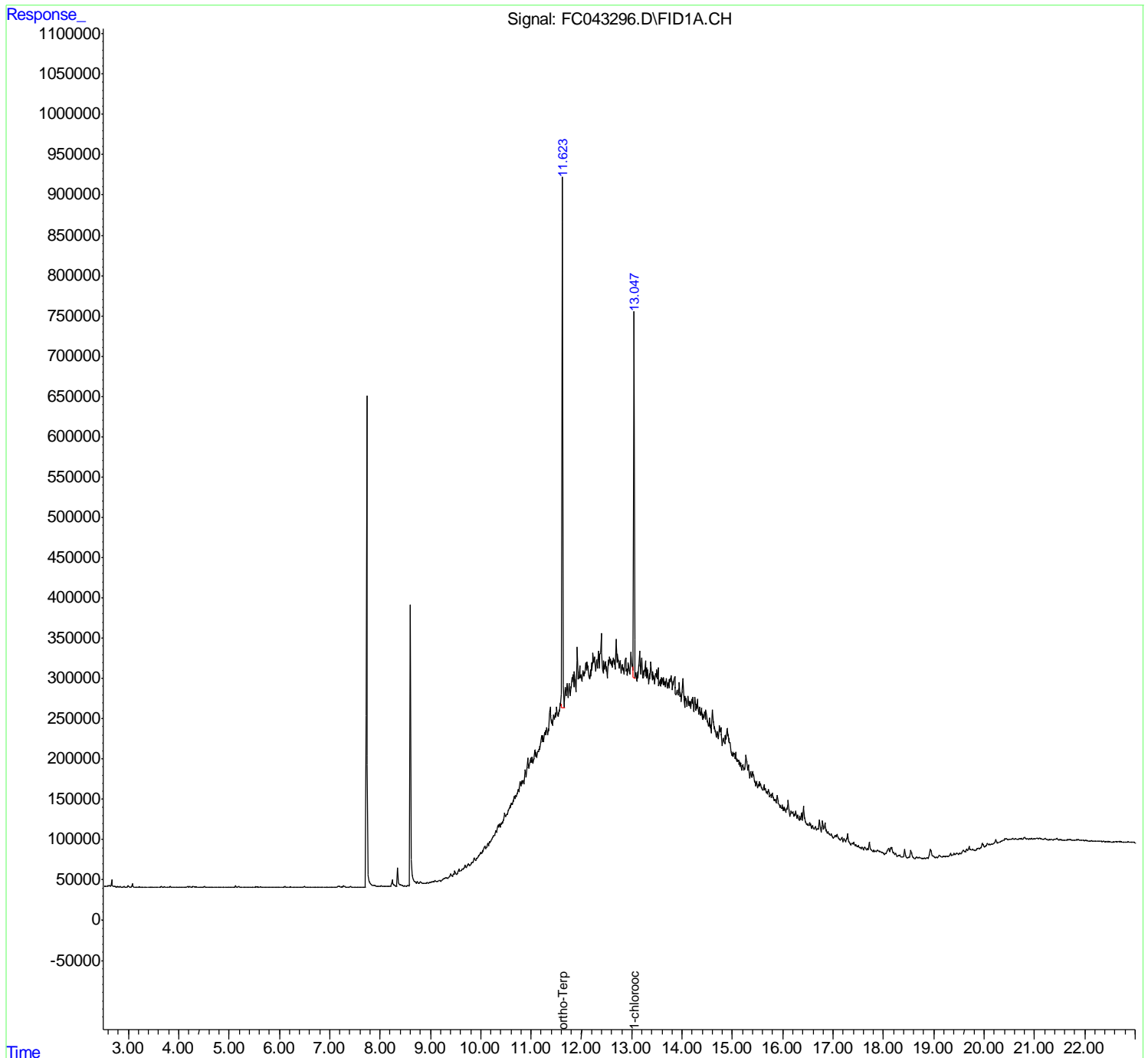
(f)=RT Delta > 1/2 Window

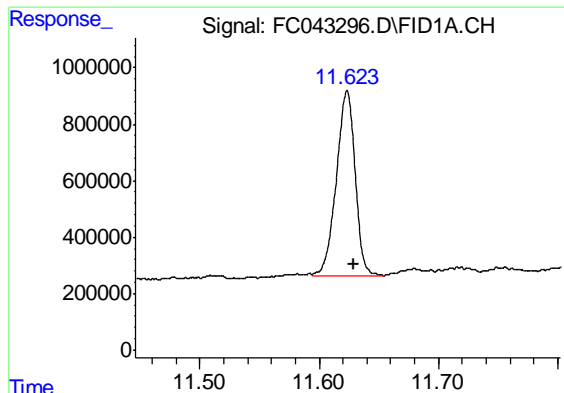
(m)=manual int.

Data Path : Z:\pestpcbsrv\HPCHEM1\FID_C\Data\FC090319AL\
Data File : FC043296.D
Signal(s) : FID1A.CH
Acq On : 04 Sep 2019 00:22
Operator : DD\AJ
Sample : K4601-10
Misc :
ALS Vial : 18 Sample Multiplier: 1

Integration File: sample.E
Quant Time: Sep 04 01:48:25 2019
Quant Method : Z:\pestpcbsrv\HPCHEM1\FID_C\Method\Alaphatic EPH 082719.M
Quant Title : GC Extractables
QLast Update : Wed Aug 28 04:05:56 2019
Response via : Initial Calibration
Integrator: ChemStation 6890 Scale Mode: Large solvent peaks clipped

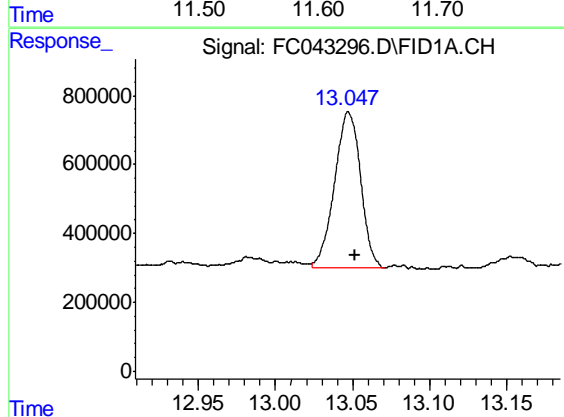
Volume Inj. : 1 ul
Signal Phase : Rxi-1ms
Signal Info : 20M x 0.18mm x 0.18um





#9 ortho-Terphenyl (SURR)

R.T.: 11.623 min
Delta R.T.: -0.006 min
Response: 7194018
Conc: 50.24 ug/ml m



#12 1-chlorooctadecane (SURR)

R.T.: 13.047 min
Delta R.T.: -0.004 min
Response: 5301134
Conc: 48.52 ug/ml m