

Data Path : Z:\pestpcbsrv\HPCHEM1\FID\_C\Data\FC090523AL\  
 Data File : FC064490.D  
 Signal(s) : FID1A.ch  
 Acq On : 05 Sep 2023 10:06  
 Operator : YP/AJ  
 Sample : 20 PPM ALIPHATIC HC STD  
 Misc :  
 ALS Vial : 2 Sample Multiplier: 1

Instrument :  
 FID\_C  
 ClientSampleId :  
 20 PPM ALIPHATIC HC STD

Manual Integrations  
 APPROVED

Reviewed By :Yogesh Patel 09/06/2023  
 Supervised By :Ankita Jodhani 09/06/2023

Integration File: autoint1.e  
 Quant Time: Sep 05 10:38:02 2023  
 Quant Method : Z:\pestpcbsrv\HPCHEM1\FID\_C\Method\Aliphatic EPH 081823.M  
 Quant Title : GC Extractables  
 QLast Update : Fri Aug 18 14:31:35 2023  
 Response via : Initial Calibration  
 Integrator: ChemStation

Volume Inj. : 1 ul  
 Signal Phase : Rxi-1ms  
 Signal Info : 20M x 0.18mm x 0.18um

Compound	R.T.	Response	Conc Units
-----			
System Monitoring Compounds			
9) S ortho-Terphenyl (SURR)	11.513	3949164	18.602 ug/ml
Spiked Amount	50.000	Recovery =	37.20%
12) S 1-chlorooctadecane (S...	12.947	2870854	18.829 ug/ml
Spiked Amount	50.000	Recovery =	37.66%
Target Compounds			
1) T n-Nonane (C9)	3.305	3338019	18.913 ug/ml
2) T n-Decane (C10)	4.365	3405348	19.412 ug/ml
3) T A~Naphthalene (C11.7)	5.944	3621495	19.475 ug/ml
4) T n-Dodecane (C12)	6.376	3465886	19.445 ug/ml
5) T A~2-methylnaphthalene...	6.997	3509092	19.726 ug/ml
6) T n-Tetradecane (C14)	8.165	3404373	19.514 ug/ml
7) T n-Hexadecane (C16)	9.762	3414428	19.758 ug/ml
8) T n-Octadecane (C18)	11.199	3378064	19.295 ug/ml
10) T n-Eicosane (C20)	12.505	3206994	18.958 ug/ml
11) T n-Heneicosane (C21)	13.115	3150283	18.875 ug/ml
13) T n-Docosane (C22)	13.698	3075587	18.856 ug/ml
14) T n-Tetracosane (C24)	14.799	2952911	18.543 ug/ml
15) T n-Hexacosane (C26)	15.817	2834180	18.344 ug/ml
16) T n-Octacosane (C28)	16.761	2734796	18.472 ug/ml
17) T n-Tricontane (C30)	17.644	2732676	18.708 ug/ml
18) T n-Dotriacontane (C32)	18.474	2702079	19.129 ug/ml
19) T n-Tetratriacontane (C34)	19.257	2612712	19.554 ug/mlm
20) T n-Hexatriacontane (C36)	19.994	2599630	20.316 ug/ml
21) T n-Octatriacontane (C38)	20.715	2554210	20.800 ug/ml
22) T n-Tetracontane (C40)	21.599	2566257	22.098 ug/ml

(f)=RT Delta > 1/2 Window

(m)=manual int.

Data Path : Z:\pestpcbsrv\HPCHEM1\FID\_C\Data\FC090523AL\  
 Data File : FC064490.D  
 Signal(s) : FID1A.ch  
 Acq On : 05 Sep 2023 10:06  
 Operator : YP/AJ  
 Sample : 20 PPM ALIPHATIC HC STD  
 Misc :  
 ALS Vial : 2 Sample Multiplier: 1

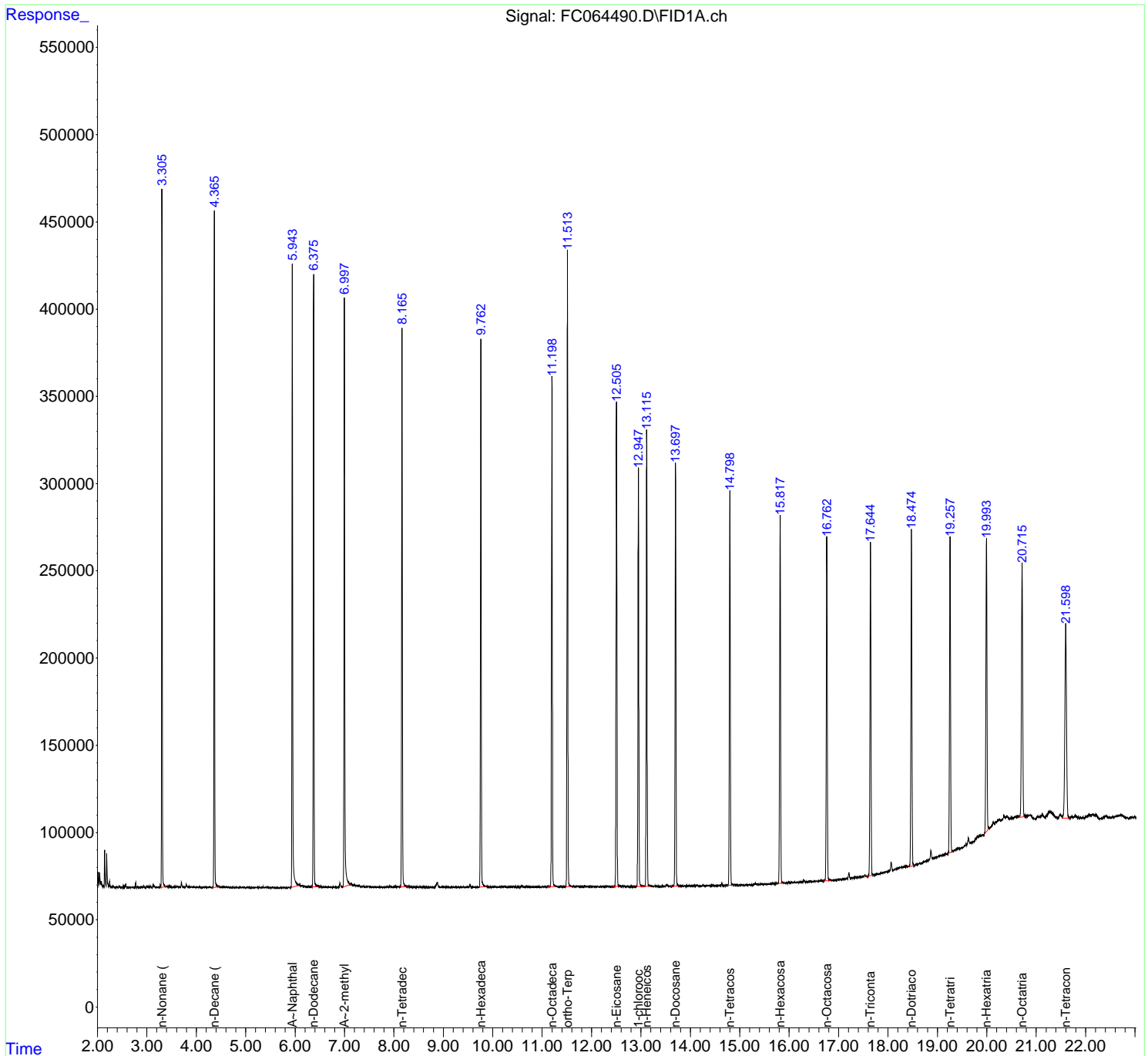
**Instrument :**  
 FID\_C  
**ClientSampleId :**  
 20 PPM ALIPHATIC HC STD

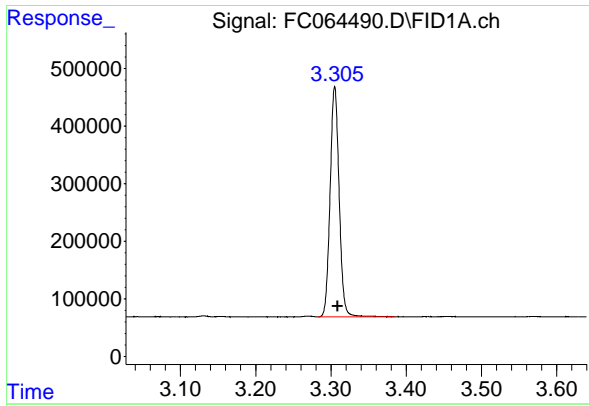
**Manual Integrations**  
**APPROVED**

Reviewed By :Yogesh Patel 09/06/2023  
 Supervised By :Ankita Jodhani 09/06/2023

Integration File: autoint1.e  
 Quant Time: Sep 05 10:38:02 2023  
 Quant Method : Z:\pestpcbsrv\HPCHEM1\FID\_C\Method\Aliphatic EPH 081823.M  
 Quant Title : GC Extractables  
 QLast Update : Fri Aug 18 14:31:35 2023  
 Response via : Initial Calibration  
 Integrator: ChemStation

Volume Inj. : 1 ul  
 Signal Phase : Rxi-1ms  
 Signal Info : 20M x 0.18mm x 0.18um





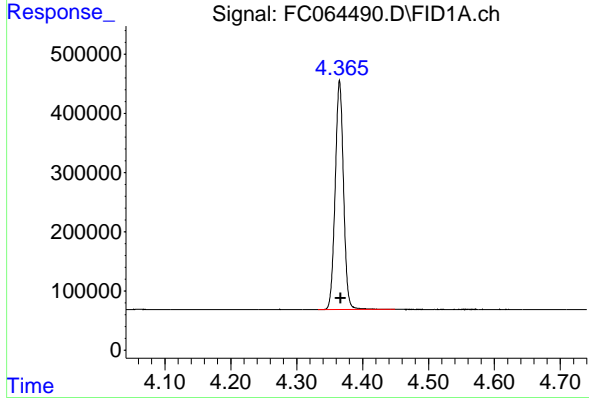
#1 n-Nonane (C9)

R.T.: 3.305 min  
 Delta R.T.: -0.004 min  
 Response: 3338019  
 Conc: 18.91 ug/ml

Instrument : FID\_C  
 Client Sample Id : 20 PPM ALIPHATIC HC STD

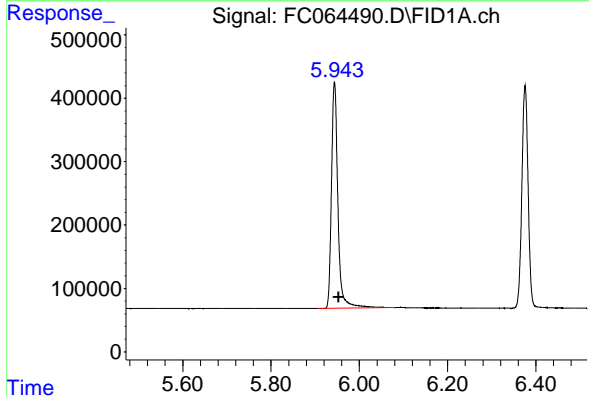
Manual Integrations  
 APPROVED

Reviewed By :Yogesh Patel 09/06/2023  
 Supervised By :Ankita Jodhani 09/06/2023



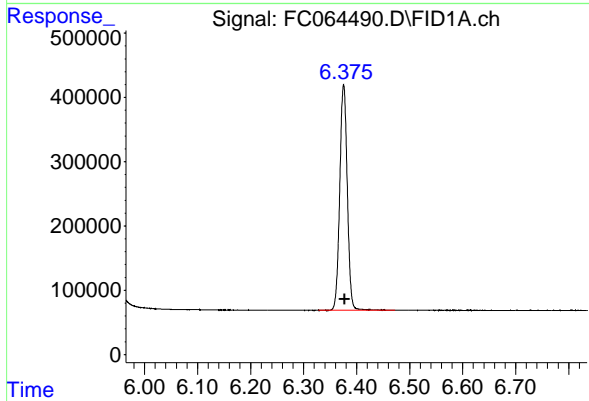
#2 n-Decane (C10)

R.T.: 4.365 min  
 Delta R.T.: -0.002 min  
 Response: 3405348  
 Conc: 19.41 ug/ml



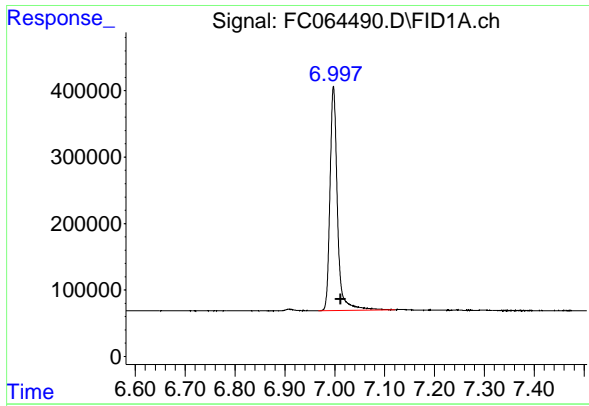
#3 A~Naphthalene (C11.7)

R.T.: 5.944 min  
 Delta R.T.: -0.009 min  
 Response: 3621495  
 Conc: 19.48 ug/ml



#4 n-Dodecane (C12)

R.T.: 6.376 min  
 Delta R.T.: -0.002 min  
 Response: 3465886  
 Conc: 19.44 ug/ml



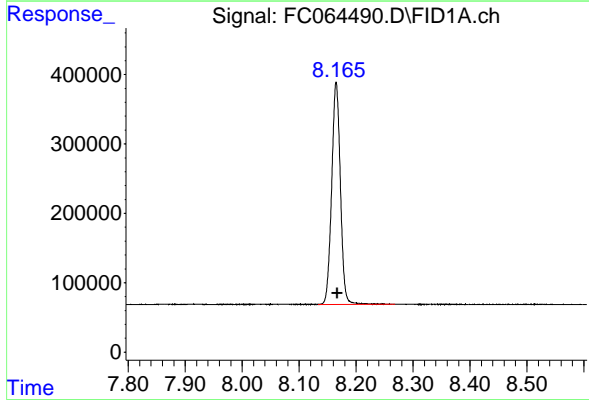
#5 A~2-methylnaphthalene (C12.89)

R.T.: 6.997 min  
 Delta R.T.: -0.014 min  
 Response: 3509092  
 Conc: 19.73 ug/ml

Instrument : FID\_C  
 ClientSampleId : 20 PPM ALIPHATIC HC STD

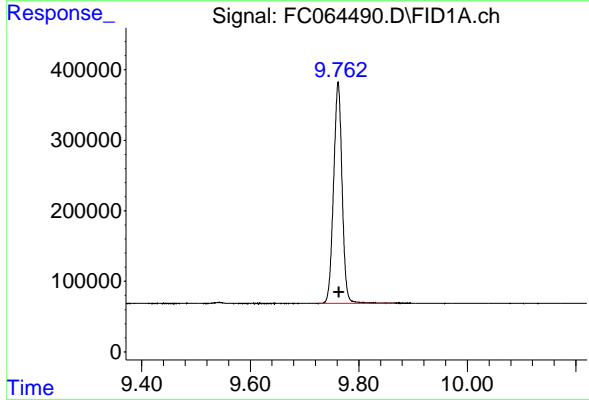
Manual Integrations  
 APPROVED

Reviewed By :Yogesh Patel 09/06/2023  
 Supervised By :Ankita Jodhani 09/06/2023



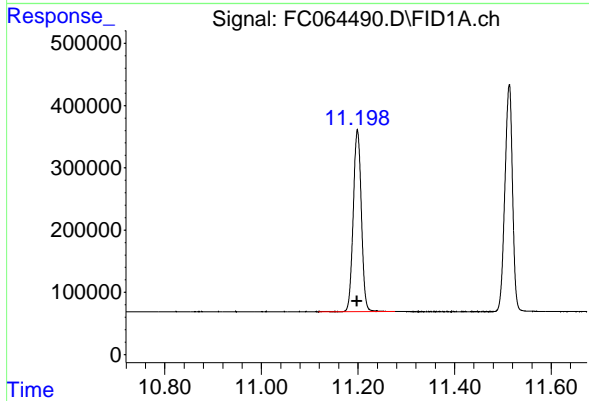
#6 n-Tetradecane (C14)

R.T.: 8.165 min  
 Delta R.T.: -0.002 min  
 Response: 3404373  
 Conc: 19.51 ug/ml



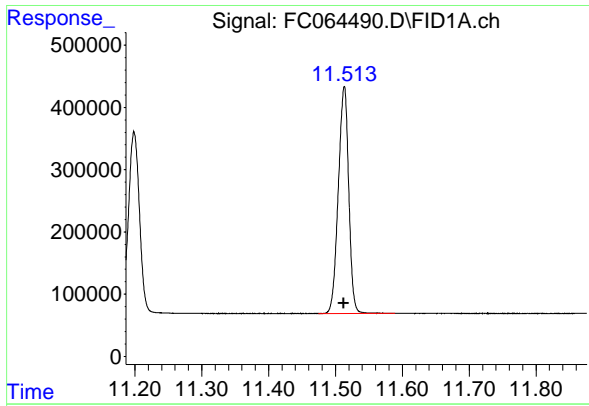
#7 n-Hexadecane (C16)

R.T.: 9.762 min  
 Delta R.T.: -0.001 min  
 Response: 3414428  
 Conc: 19.76 ug/ml



#8 n-Octadecane (C18)

R.T.: 11.199 min  
 Delta R.T.: 0.000 min  
 Response: 3378064  
 Conc: 19.29 ug/ml



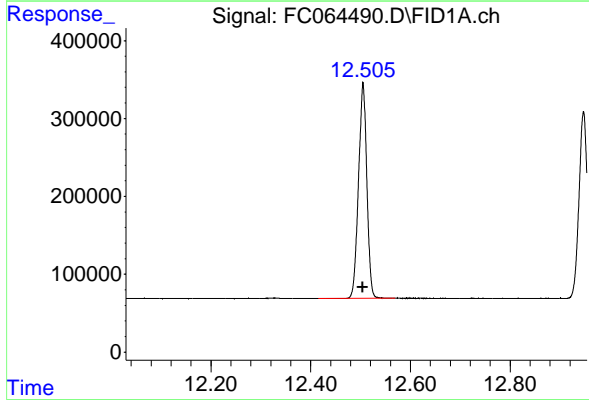
#9 ortho-Terphenyl (SURR)

R.T.: 11.513 min  
 Delta R.T.: 0.001 min  
 Response: 3949164  
 Conc: 18.60 ug/ml

Instrument : FID\_C  
 Client Sample Id : 20 PPM ALIPHATIC HC STD

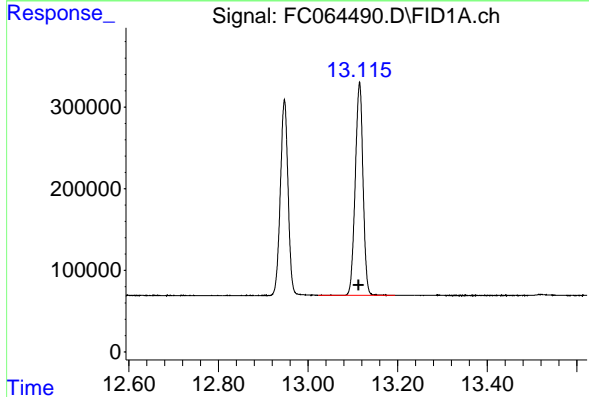
Manual Integrations  
 APPROVED

Reviewed By :Yogesh Patel 09/06/2023  
 Supervised By :Ankita Jodhani 09/06/2023



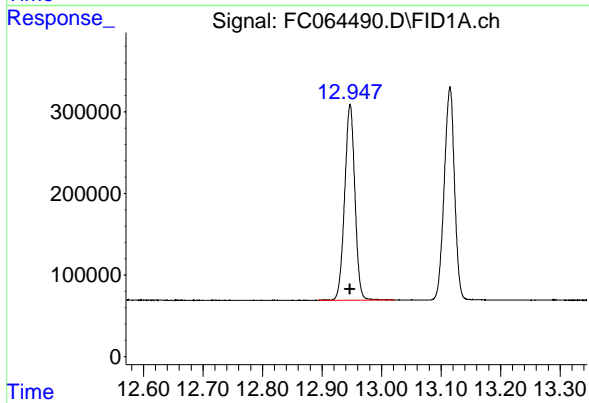
#10 n-Eicosane (C20)

R.T.: 12.505 min  
 Delta R.T.: 0.001 min  
 Response: 3206994  
 Conc: 18.96 ug/ml



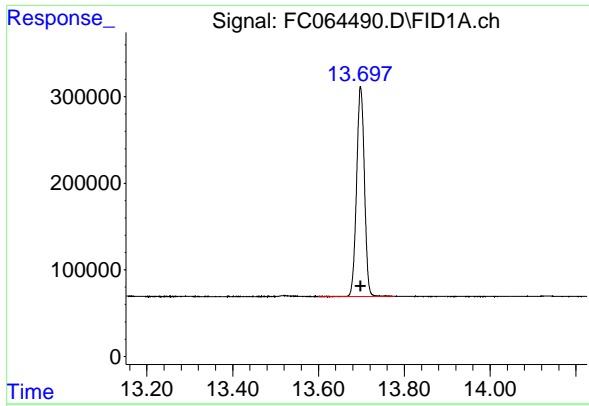
#11 n-Heneicosane (C21)

R.T.: 13.115 min  
 Delta R.T.: 0.002 min  
 Response: 3150283  
 Conc: 18.87 ug/ml



#12 1-chlorooctadecane (SURR)

R.T.: 12.947 min  
 Delta R.T.: 0.000 min  
 Response: 2870854  
 Conc: 18.83 ug/ml



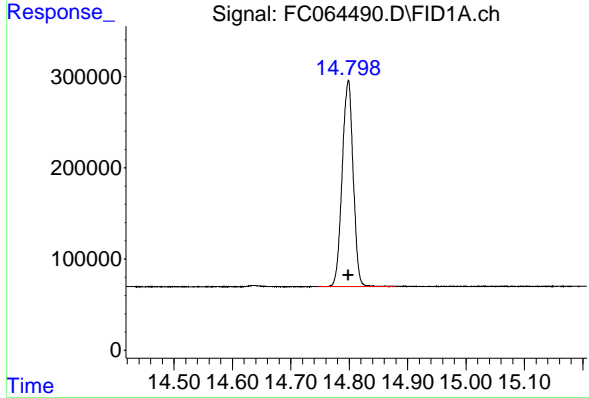
#13 n-Docosane (C22)

R.T.: 13.698 min  
 Delta R.T.: 0.000 min  
 Response: 3075587  
 Conc: 18.86 ug/ml

Instrument : FID\_C  
 ClientSampleId : 20 PPM ALIPHATIC HC STD

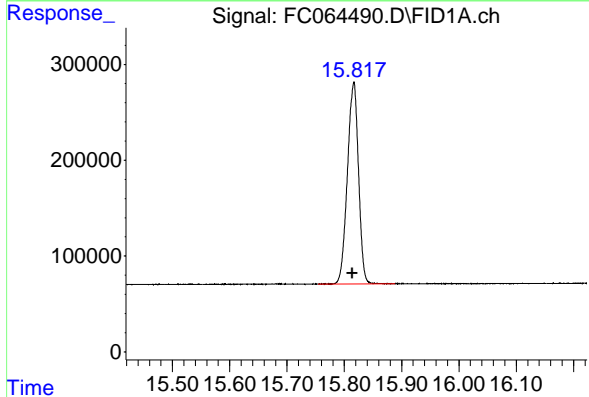
Manual Integrations  
 APPROVED

Reviewed By :Yogesh Patel 09/06/2023  
 Supervised By :Ankita Jodhani 09/06/2023



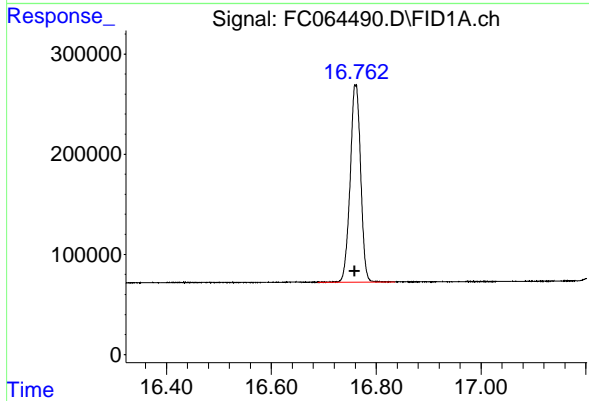
#14 n-Tetracosane (C24)

R.T.: 14.799 min  
 Delta R.T.: 0.000 min  
 Response: 2952911  
 Conc: 18.54 ug/ml



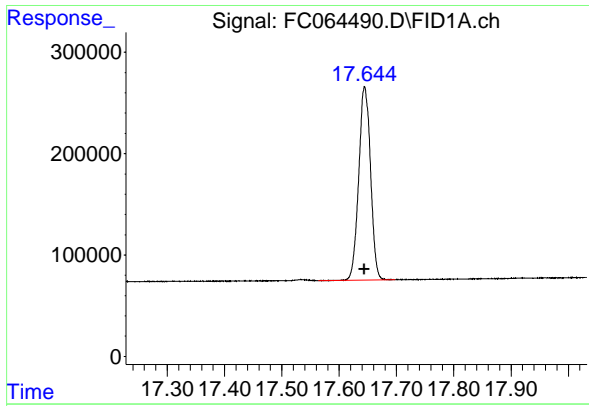
#15 n-Hexacosane (C26)

R.T.: 15.817 min  
 Delta R.T.: 0.003 min  
 Response: 2834180  
 Conc: 18.34 ug/ml



#16 n-Octacosane (C28)

R.T.: 16.761 min  
 Delta R.T.: 0.002 min  
 Response: 2734796  
 Conc: 18.47 ug/ml



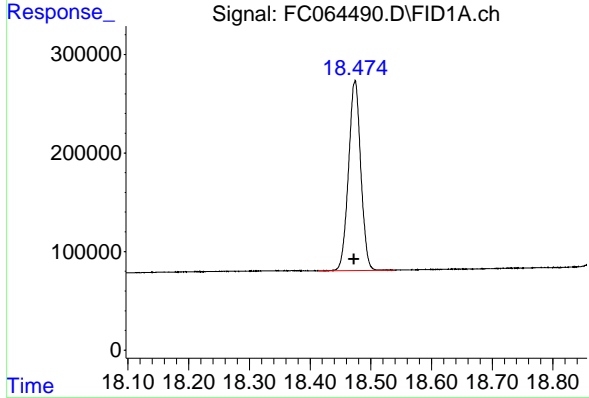
#17 n-Tricontane (C30)

R.T.: 17.644 min  
Delta R.T.: 0.000 min  
Response: 2732676  
Conc: 18.71 ug/ml

Instrument : FID\_C  
Client Sample Id : 20 PPM ALIPHATIC HC STD

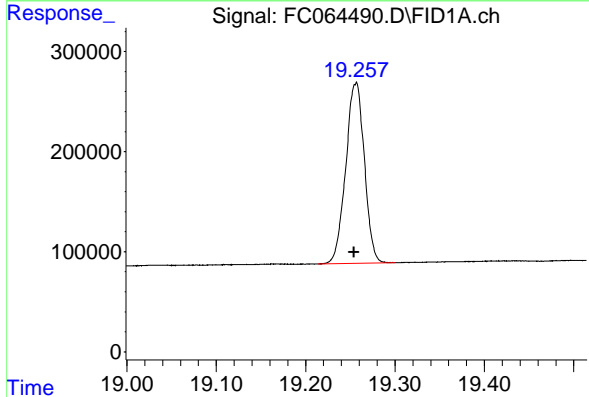
Manual Integrations  
APPROVED

Reviewed By :Yogesh Patel 09/06/2023  
Supervised By :Ankita Jodhani 09/06/2023



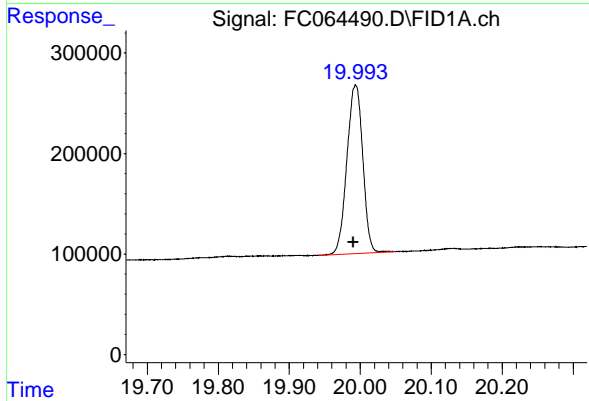
#18 n-Dotriacontane (C32)

R.T.: 18.474 min  
Delta R.T.: 0.002 min  
Response: 2702079  
Conc: 19.13 ug/ml



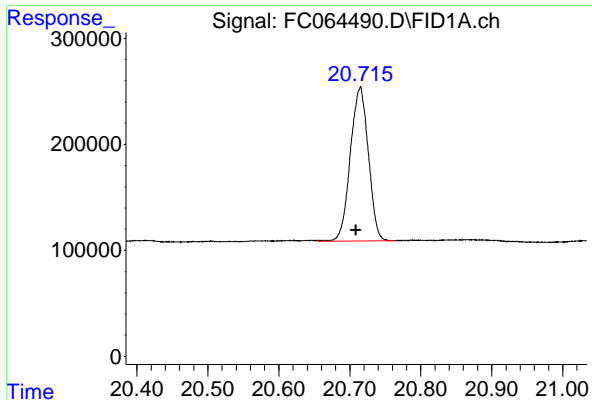
#19 n-Tetraatriacontane (C34)

R.T.: 19.257 min  
Delta R.T.: 0.003 min  
Response: 2612712  
Conc: 19.55 ug/ml m



#20 n-Hexatriacontane (C36)

R.T.: 19.994 min  
Delta R.T.: 0.003 min  
Response: 2599630  
Conc: 20.32 ug/ml



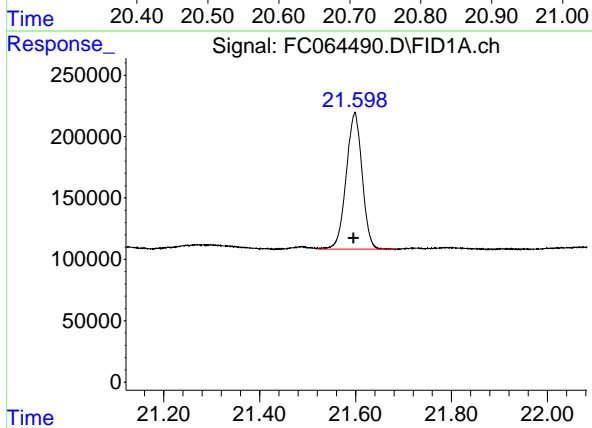
#21 n-Octatriacontane (C38)

R.T.: 20.715 min  
 Delta R.T.: 0.006 min  
 Response: 2554210  
 Conc: 20.80 ug/ml

Instrument : FID\_C  
 ClientSampleId : 20 PPM ALIPHATIC HC STD

Manual Integrations  
 APPROVED

Reviewed By :Yogesh Patel 09/06/2023  
 Supervised By :Ankita Jodhani 09/06/2023



#22 n-Tetracontane (C40)

R.T.: 21.599 min  
 Delta R.T.: 0.003 min  
 Response: 2566257  
 Conc: 22.10 ug/ml