

Data Path : Z:\pestpcbsrv\HPCHEM1\FID_C\Data\FC090619AL\
 Data File : FC043346.D
 Signal(s) : FID1A.CH
 Acq On : 06 Sep 2019 10:52
 Operator : DD\AJ
 Sample : K4650-01DL 2X
 Misc :
 ALS Vial : 4 Sample Multiplier: 1

Integration File: autoint1.e
 Quant Time: Sep 07 00:44:14 2019
 Quant Method : Z:\pestpcbsrv\HPCHEM1\FID_C\Method\Alaphatic EPH 082719.M
 Quant Title : GC Extractables
 QLast Update : Wed Aug 28 04:05:56 2019
 Response via : Initial Calibration
 Integrator: ChemStation 6890 Scale Mode: Large solvent peaks clipped

Volume Inj. : 1 ul
 Signal Phase : Rxi-1ms
 Signal Info : 20M x 0.18mm x 0.18um

Compound	R.T.	Response	Conc Units

System Monitoring Compounds			
9) S ortho-Terphenyl (SURR)	11.610	3201526	22.360 ug/ml
Spiked Amount	50.000	Recovery	= 44.72%
12) S 1-chlorooctadecane (S...	13.031	2596193	23.764 ug/ml
Spiked Amount	50.000	Recovery	= 47.53%
Target Compounds			
10) T n-Eicosane (C20)	12.669f	1225740	9.548 ug/ml
14) T n-Tetracosane (C24)	14.881	631689	4.931 ug/ml

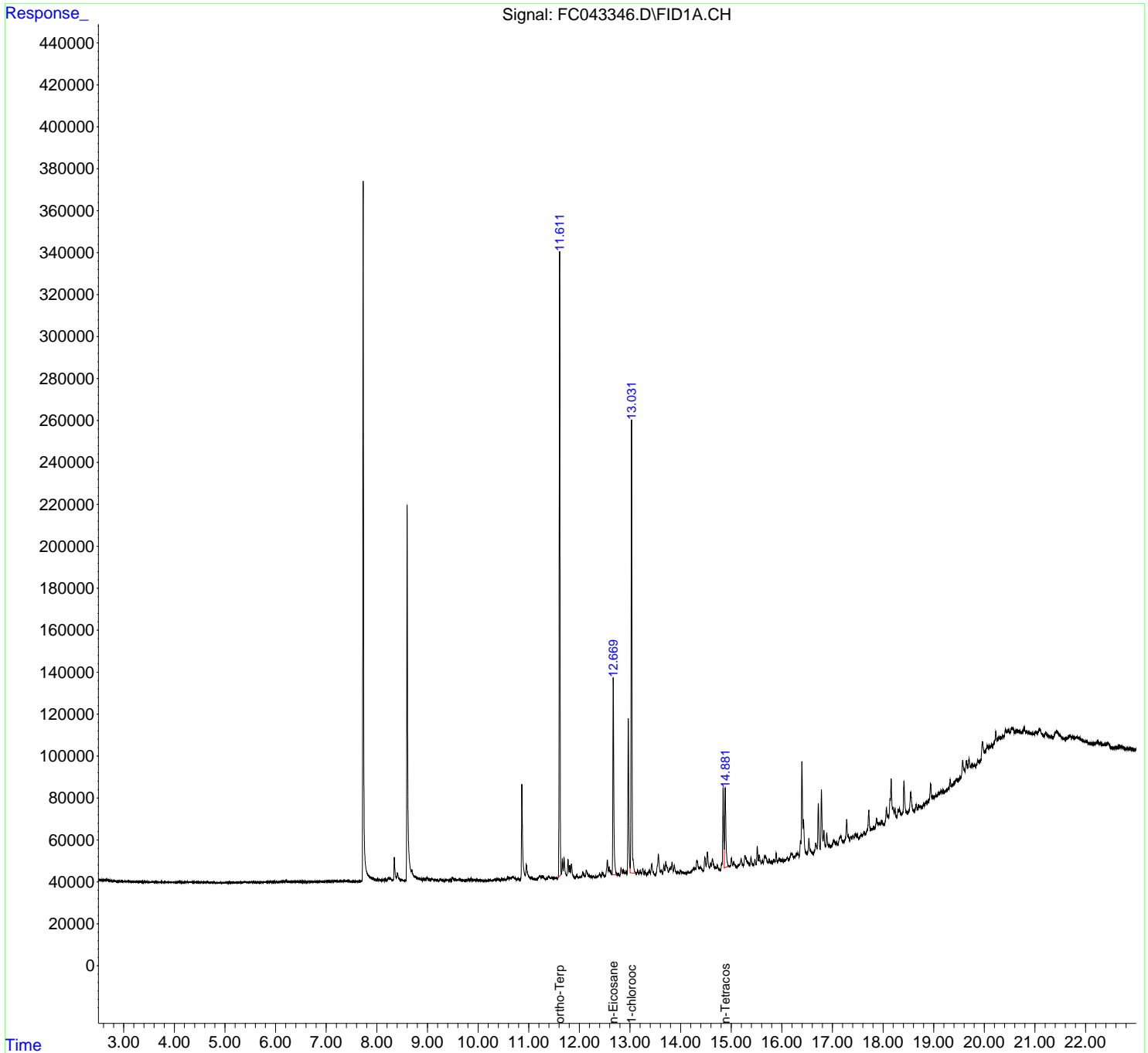
(f)=RT Delta > 1/2 Window

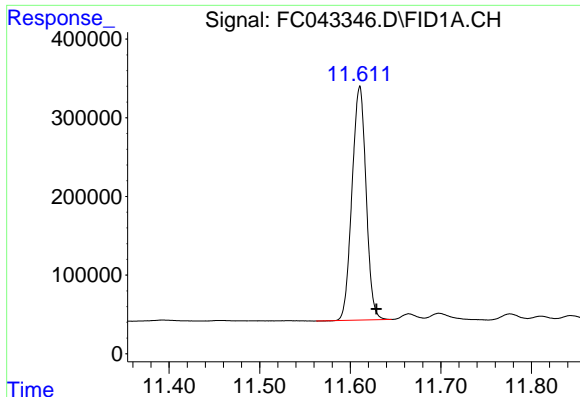
(m)=manual int.

Data Path : Z:\pestpcbsrv\HPCHEM1\FID_C\Data\FC090619AL\
 Data File : FC043346.D
 Signal(s) : FID1A.CH
 Acq On : 06 Sep 2019 10:52
 Operator : DD\AJ
 Sample : K4650-01DL 2X
 Misc :
 ALS Vial : 4 Sample Multiplier: 1

Integration File: autoint1.e
 Quant Time: Sep 07 00:44:14 2019
 Quant Method : Z:\pestpcbsrv\HPCHEM1\FID_C\Method\Alaphatic EPH 082719.M
 Quant Title : GC Extractables
 QLast Update : Wed Aug 28 04:05:56 2019
 Response via : Initial Calibration
 Integrator: ChemStation 6890 Scale Mode: Large solvent peaks clipped

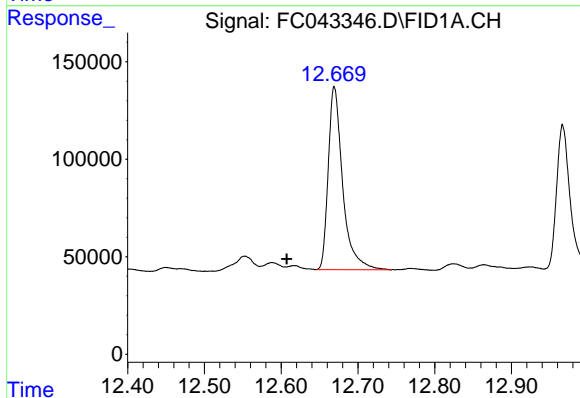
Volume Inj. : 1 ul
 Signal Phase : Rxi-1ms
 Signal Info : 20M x 0.18mm x 0.18um





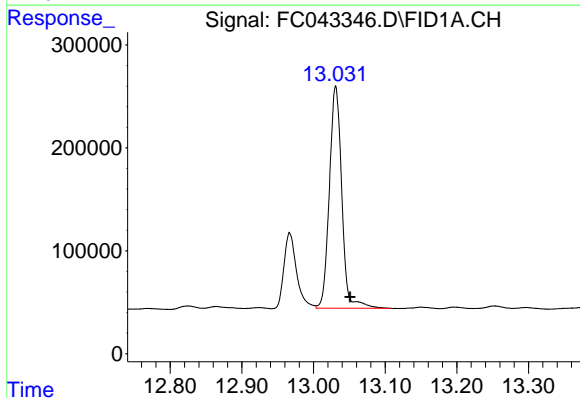
#9 ortho-Terphenyl (SURR)

R.T.: 11.610 min
 Delta R.T.: -0.018 min
 Response: 3201526
 Conc: 22.36 ug/ml



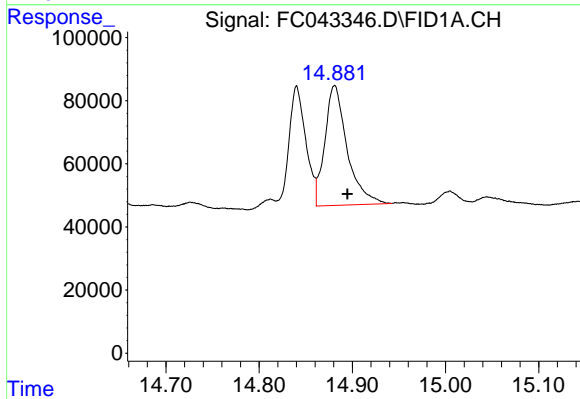
#10 n-Eicosane (C20)

R.T.: 12.669 min
 Delta R.T.: 0.062 min
 Response: 1225740
 Conc: 9.55 ug/ml



#12 1-chlorooctadecane (SURR)

R.T.: 13.031 min
 Delta R.T.: -0.020 min
 Response: 2596193
 Conc: 23.76 ug/ml



#14 n-Tetracosane (C24)

R.T.: 14.881 min
 Delta R.T.: -0.014 min
 Response: 631689
 Conc: 4.93 ug/ml