

Data Path : Z:\pestpcbsrv\HPCHEM1\FID_C\Data\FC090919AL\
 Data File : FC043389.D
 Signal(s) : FID1A.CH
 Acq On : 09 Sep 2019 13:20
 Operator : DD\AJ
 Sample : K4758-11
 Misc :
 ALS Vial : 9 Sample Multiplier: 1

Integration File: sample.E
 Quant Time: Sep 10 06:45:12 2019
 Quant Method : Z:\pestpcbsrv\HPCHEM1\FID_C\Method\Alaphatic EPH 082719.M
 Quant Title : GC Extractables
 QLast Update : Wed Aug 28 04:05:56 2019
 Response via : Initial Calibration
 Integrator: ChemStation 6890 Scale Mode: Large solvent peaks clipped

Volume Inj. : 1 ul
 Signal Phase : Rxi-1ms
 Signal Info : 20M x 0.18mm x 0.18um

Compound	R.T.	Response	Conc Units
System Monitoring Compounds			
9) S ortho-Terphenyl (SURR)	11.606	4023360	28.100 ug/ml
Spiked Amount	50.000	Recovery =	56.20%
12) S 1-chlorooctadecane (S...	13.028	3149339	28.827 ug/ml
Spiked Amount	50.000	Recovery =	57.65%

Target Compounds

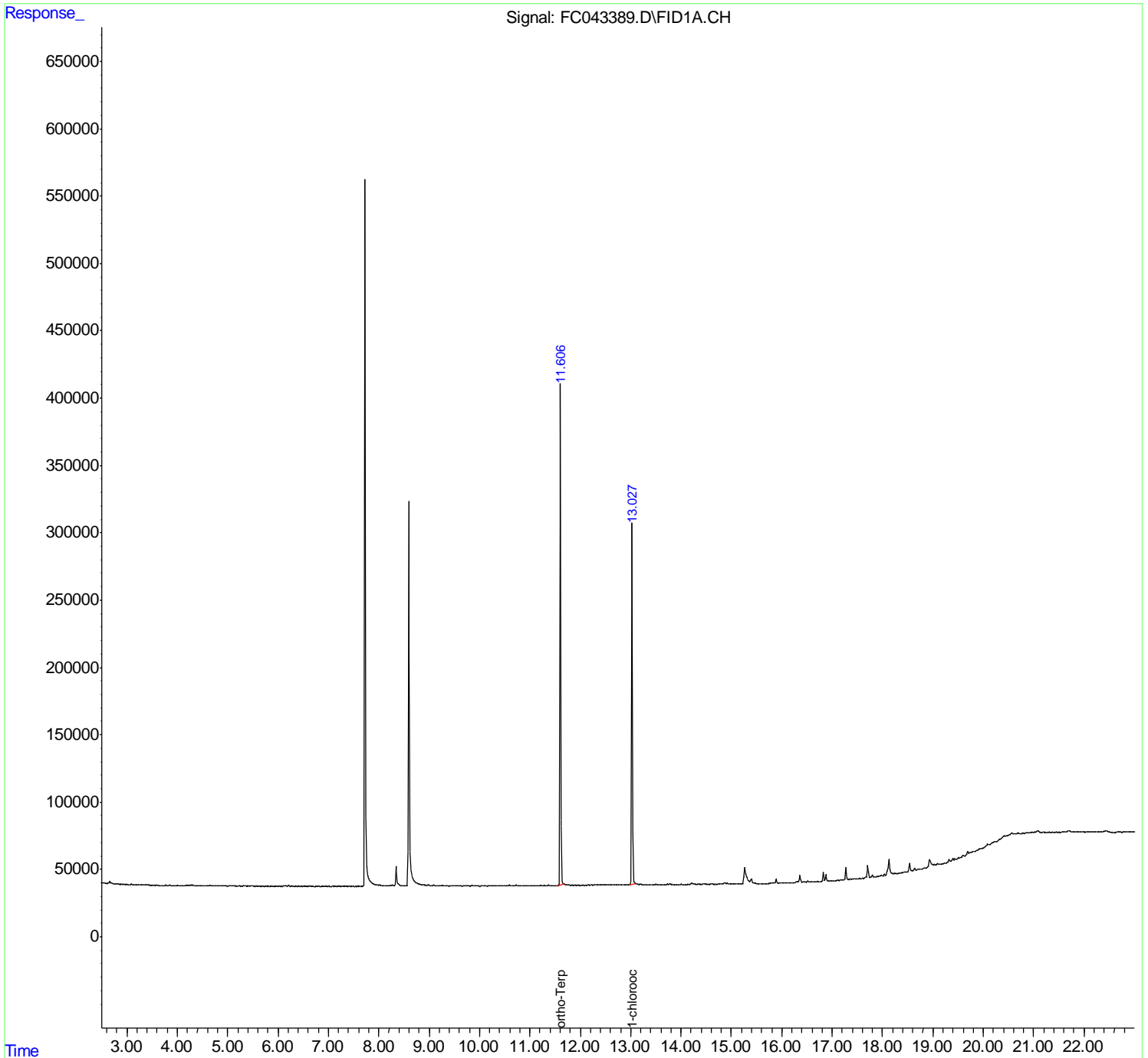
(f)=RT Delta > 1/2 Window

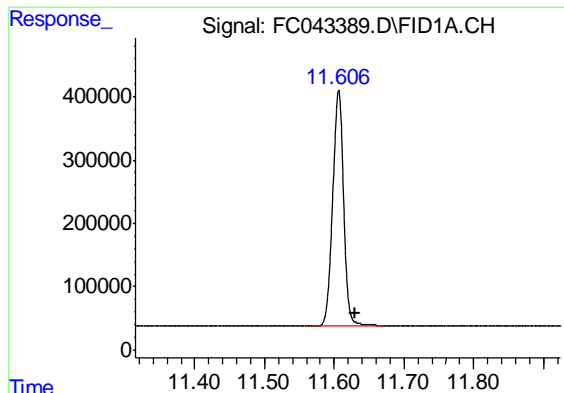
(m)=manual int.

Data Path : Z:\pestpcbsrv\HPCHEM1\FID_C\Data\FC090919AL\
Data File : FC043389.D
Signal(s) : FID1A.CH
Acq On : 09 Sep 2019 13:20
Operator : DD\AJ
Sample : K4758-11
Misc :
ALS Vial : 9 Sample Multiplier: 1

Integration File: sample.E
Quant Time: Sep 10 06:45:12 2019
Quant Method : Z:\pestpcbsrv\HPCHEM1\FID_C\Method\Alaphatic EPH 082719.M
Quant Title : GC Extractables
QLast Update : Wed Aug 28 04:05:56 2019
Response via : Initial Calibration
Integrator: ChemStation 6890 Scale Mode: Large solvent peaks clipped

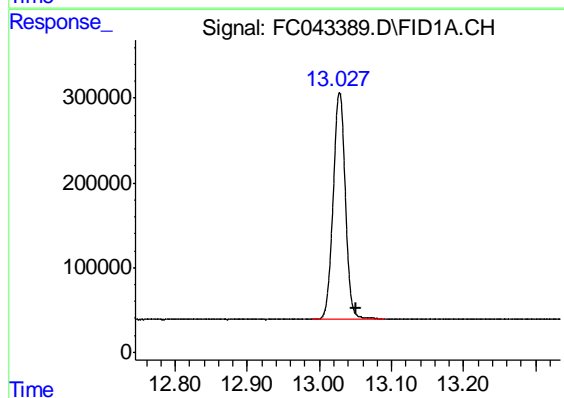
Volume Inj. : 1 ul
Signal Phase : Rxi-1ms
Signal Info : 20M x 0.18mm x 0.18um





#9 ortho-Terphenyl (SURR)

R.T.: 11.606 min
Delta R.T.: -0.023 min
Response: 4023360
Conc: 28.10 ug/ml



#12 1-chlorooctadecane (SURR)

R.T.: 13.028 min
Delta R.T.: -0.023 min
Response: 3149339
Conc: 28.83 ug/ml