

Data Path : Z:\pestpcbsrv\HPCHEM1\FID_C\Data\FC090919AL\
 Data File : FC043415.D
 Signal(s) : FID1A.CH
 Acq On : 10 Sep 2019 5:48
 Operator : DD\AJ
 Sample : 20 PPM ALIPHATIC HC STD
 Misc :
 ALS Vial : 2 Sample Multiplier: 1

Integration File: sample.E
 Quant Time: Sep 10 07:31:57 2019
 Quant Method : Z:\pestpcbsrv\HPCHEM1\FID_C\Method\Aliphatic EPH 082719.M
 Quant Title : GC Extractables
 QLast Update : Tue Sep 10 07:31:08 2019
 Response via : Initial Calibration
 Integrator: ChemStation 6890 Scale Mode: Large solvent peaks clipped

Volume Inj. : 1 ul
 Signal Phase : Rxi-1ms
 Signal Info : 20M x 0.18mm x 0.18um

| Compound | R.T. | Response | Conc Units |
|---------------------------------|--------|------------|--------------|
| System Monitoring Compounds | | | |
| 9) S ortho-Terphenyl (SURR) | 11.602 | 2694787 | 18.821 ug/ml |
| Spiked Amount | 50.000 | Recovery = | 37.64% |
| 12) S 1-chlorooctadecane (S...) | 13.022 | 2033690 | 18.615 ug/ml |
| Spiked Amount | 50.000 | Recovery = | 37.23% |
| Target Compounds | | | |
| 1) T n-Nonane (C9) | 3.443 | 2434588 | 20.441 ug/ml |
| 2) T n-Decane (C10) | 4.497 | 2533584 | 21.307 ug/ml |
| 3) T A~Naphthalene (C11.7) | 6.076 | 2552760 | 20.928 ug/ml |
| 4) T n-Dodecane (C12) | 6.491 | 2609708 | 21.331 ug/ml |
| 5) T A~2-methylnaphthalene... | 7.121 | 2583705 | 21.048 ug/ml |
| 6) T n-Tetradecane (C14) | 8.267 | 2588435 | 20.939 ug/ml |
| 7) T n-Hexadecane (C16) | 9.852 | 2565969 | 20.581 ug/ml |
| 8) T n-Octadecane (C18) | 11.282 | 2530555 | 19.895 ug/ml |
| 10) T n-Eicosane (C20) | 12.580 | 2468209 | 19.226 ug/ml |
| 11) T n-Heneicosane (C21) | 13.188 | 2444909 | 18.879 ug/ml |
| 13) T n-Docosane (C22) | 13.769 | 2384874 | 18.565 ug/ml |
| 14) T n-Tetracosane (C24) | 14.866 | 2321924 | 18.124 ug/ml |
| 15) T n-Hexacosane (C26) | 15.879 | 2260532 | 17.949 ug/ml |
| 16) T n-Octacosane (C28) | 16.823 | 2249389 | 18.320 ug/ml |
| 17) T n-Tricontane (C30) | 17.706 | 2289381 | 18.982 ug/ml |
| 18) T n-Dotriacontane (C32) | 18.532 | 2239693 | 19.635 ug/ml |
| 19) T n-Tetratriacontane (C34) | 19.312 | 2158305 | 20.060 ug/ml |
| 20) T n-Hexatriacontane (C36) | 20.049 | 2053761 | 19.507 ug/ml |
| 21) T n-Octatriacontane (C38) | 20.775 | 1974717 | 21.107 ug/ml |
| 22) T n-Tetracontane (C40) | 21.667 | 2029533 | 21.006 ug/ml |

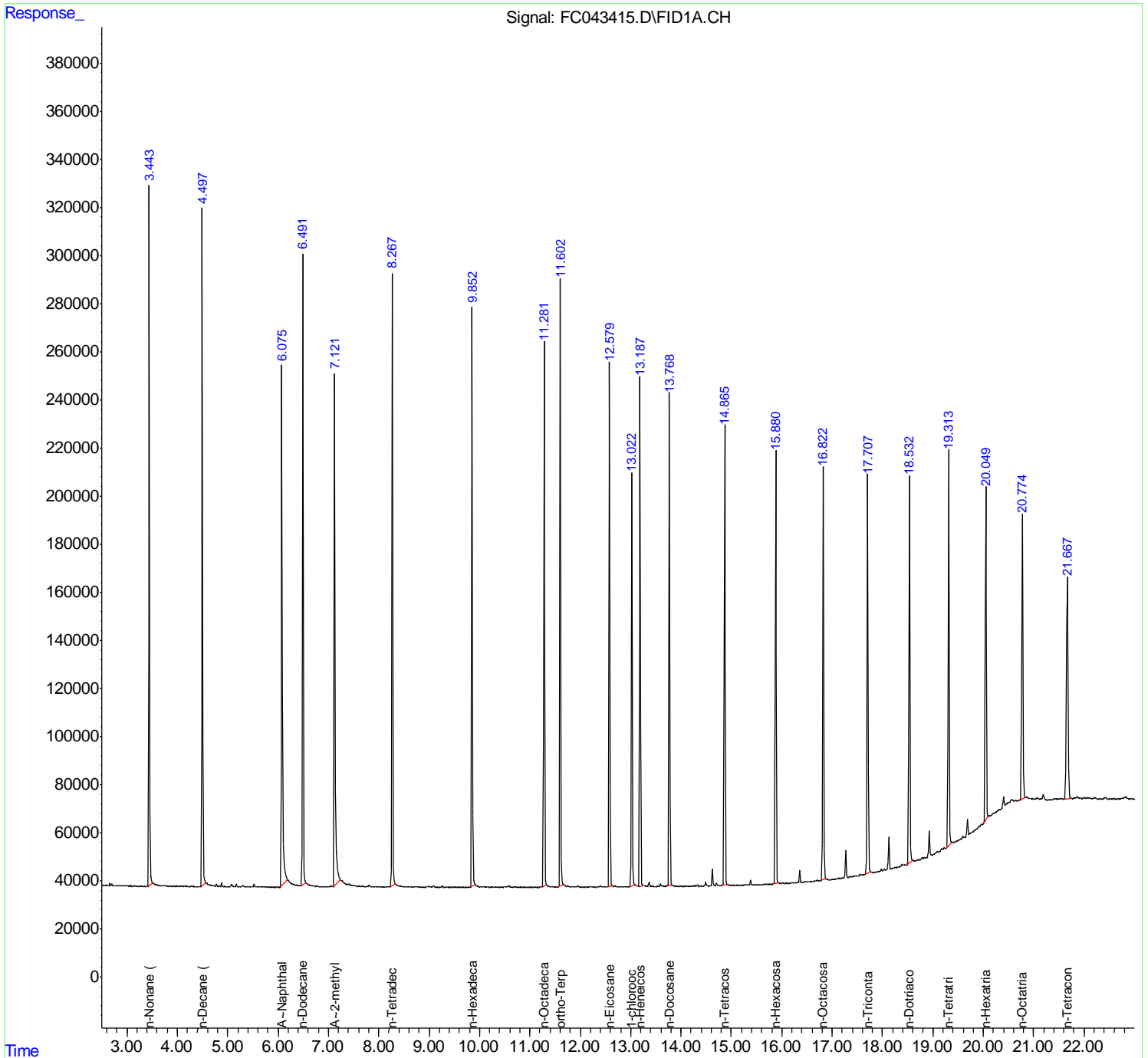
(f)=RT Delta > 1/2 Window

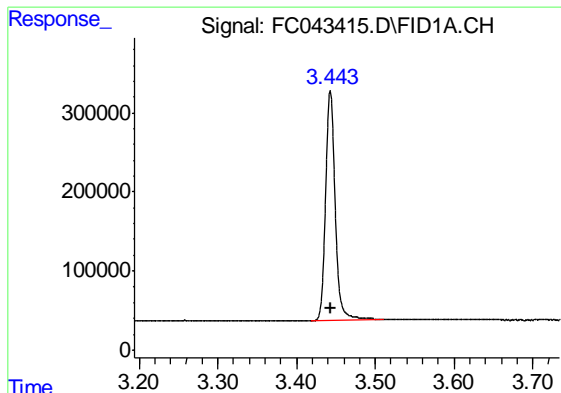
(m)=manual int.

Data Path : Z:\pestpcbsrv\HPCHEM1\FID_C\Data\FC090919AL\
 Data File : FC043415.D
 Signal(s) : FID1A.CH
 Acq On : 10 Sep 2019 5:48
 Operator : DD\AJ
 Sample : 20 PPM ALIPHATIC HC STD
 Misc :
 ALS Vial : 2 Sample Multiplier: 1

Integration File: sample.E
 Quant Time: Sep 10 07:31:57 2019
 Quant Method : Z:\pestpcbsrv\HPCHEM1\FID_C\Method\Aliphatic EPH 082719.M
 Quant Title : GC Extractables
 QLast Update : Tue Sep 10 07:31:08 2019
 Response via : Initial Calibration
 Integrator: ChemStation 6890 Scale Mode: Large solvent peaks clipped

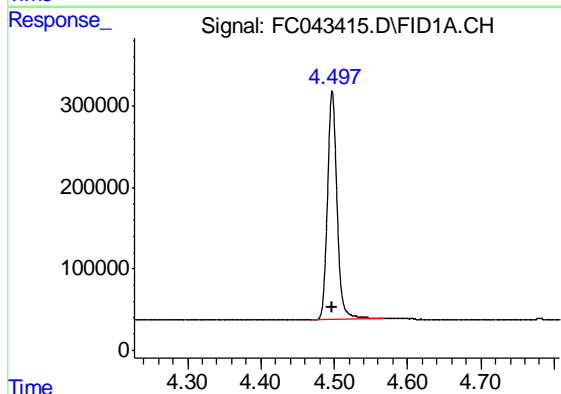
Volume Inj. : 1 ul
 Signal Phase : Rxi-1ms
 Signal Info : 20M x 0.18mm x 0.18um





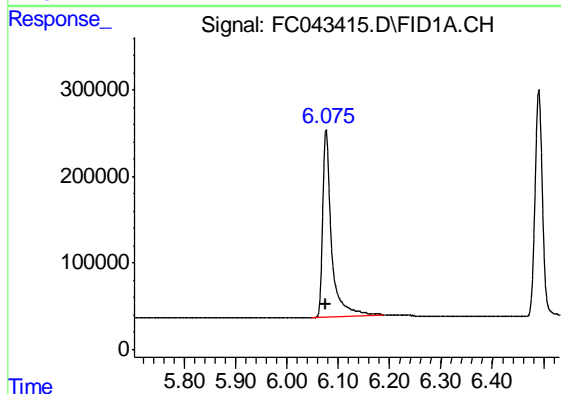
#1 n-Nonane (C9)

R.T.: 3.443 min
Delta R.T.: 0.000 min
Response: 2434588
Conc: 20.44 ug/ml



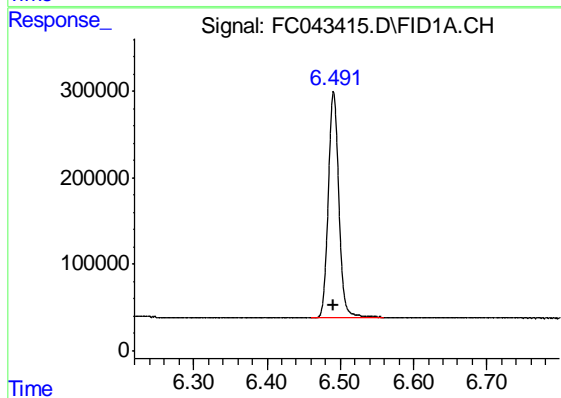
#2 n-Decane (C10)

R.T.: 4.497 min
Delta R.T.: 0.000 min
Response: 2533584
Conc: 21.31 ug/ml



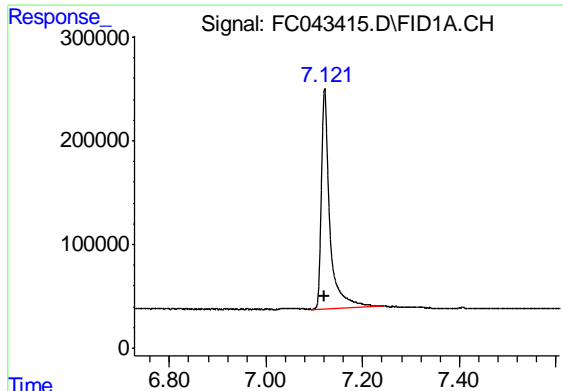
#3 A-Naphthalene (C11.7)

R.T.: 6.076 min
Delta R.T.: 0.000 min
Response: 2552760
Conc: 20.93 ug/ml



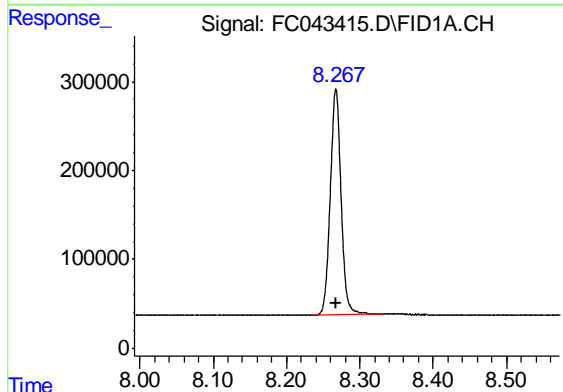
#4 n-Dodecane (C12)

R.T.: 6.491 min
Delta R.T.: 0.000 min
Response: 2609708
Conc: 21.33 ug/ml



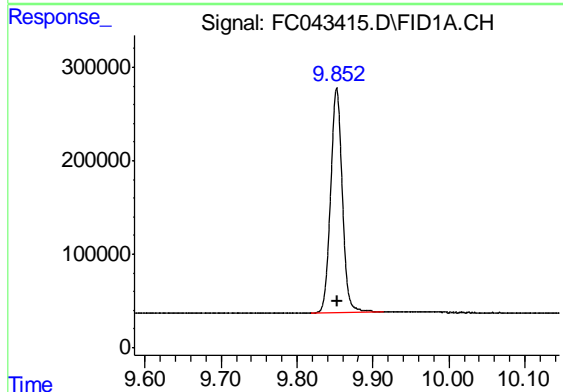
#5 A~2-methylnaphthalene (C12.89)

R.T.: 7.121 min
Delta R.T.: 0.000 min
Response: 2583705
Conc: 21.05 ug/ml



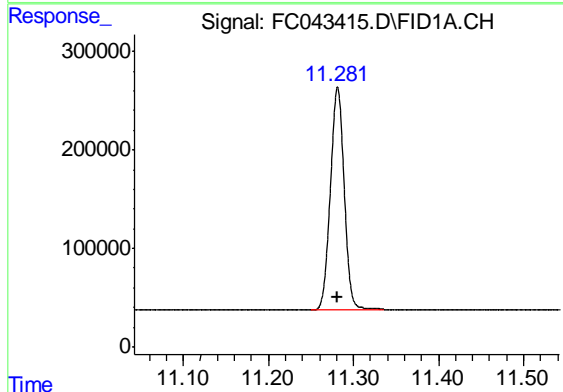
#6 n-Tetradecane (C14)

R.T.: 8.267 min
Delta R.T.: 0.000 min
Response: 2588435
Conc: 20.94 ug/ml



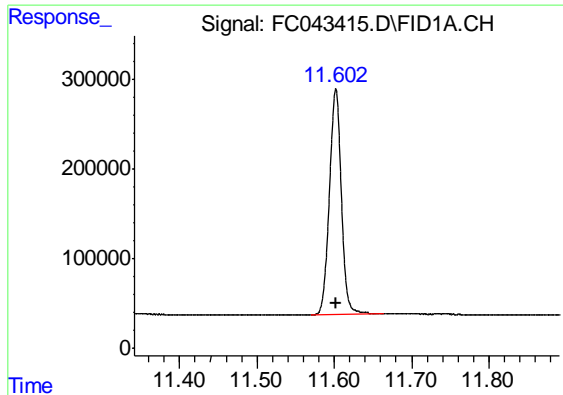
#7 n-Hexadecane (C16)

R.T.: 9.852 min
Delta R.T.: 0.000 min
Response: 2565969
Conc: 20.58 ug/ml



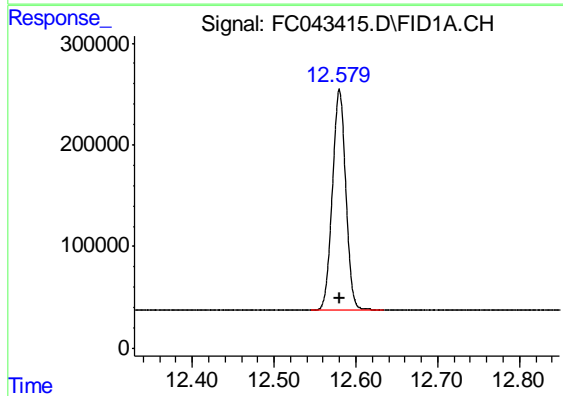
#8 n-Octadecane (C18)

R.T.: 11.282 min
Delta R.T.: 0.000 min
Response: 2530555
Conc: 19.89 ug/ml



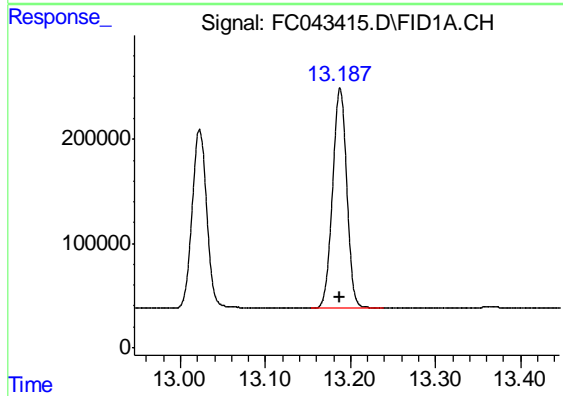
#9 ortho-Terphenyl (SURR)

R.T.: 11.602 min
 Delta R.T.: 0.000 min
 Response: 2694787
 Conc: 18.82 ug/ml



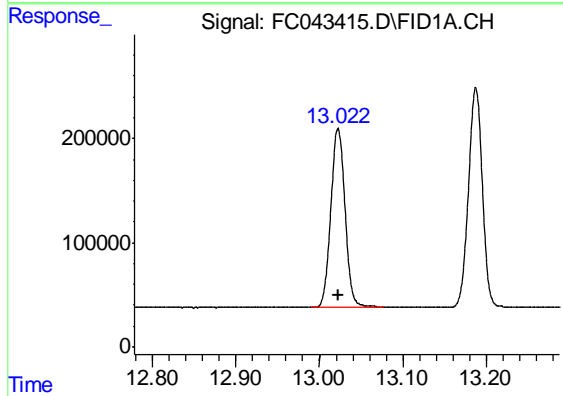
#10 n-Eicosane (C20)

R.T.: 12.580 min
 Delta R.T.: 0.000 min
 Response: 2468209
 Conc: 19.23 ug/ml



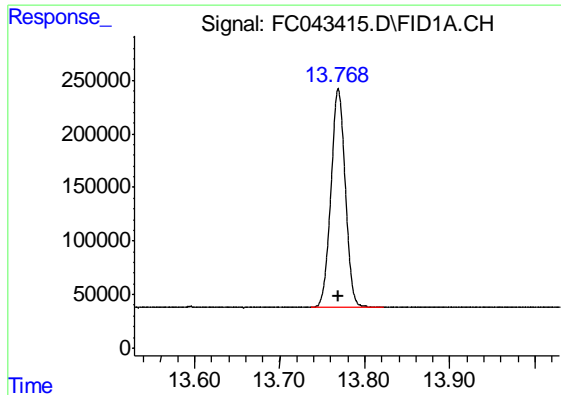
#11 n-Heneicosane (C21)

R.T.: 13.188 min
 Delta R.T.: 0.000 min
 Response: 2444909
 Conc: 18.88 ug/ml



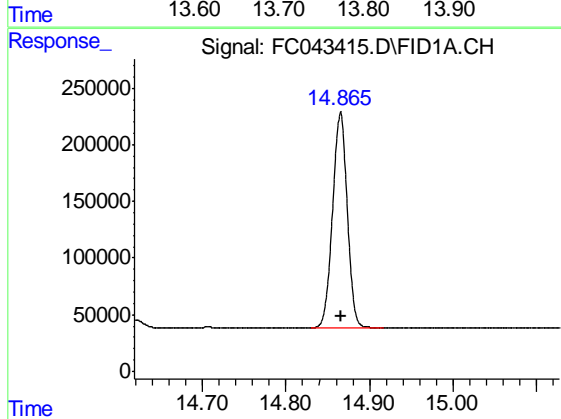
#12 1-chlorooctadecane (SURR)

R.T.: 13.022 min
 Delta R.T.: 0.000 min
 Response: 2033690
 Conc: 18.61 ug/ml



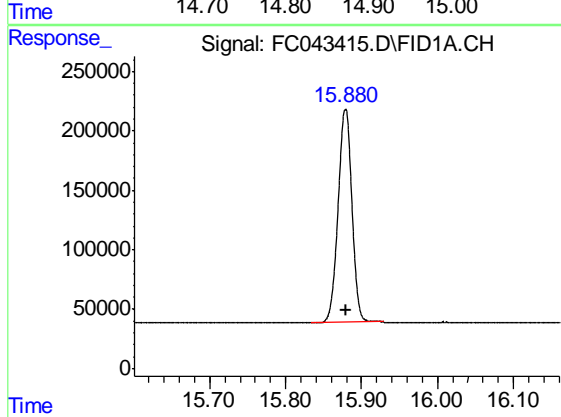
#13 n-Docosane (C22)

R.T.: 13.769 min
Delta R.T.: 0.000 min
Response: 2384874
Conc: 18.56 ug/ml



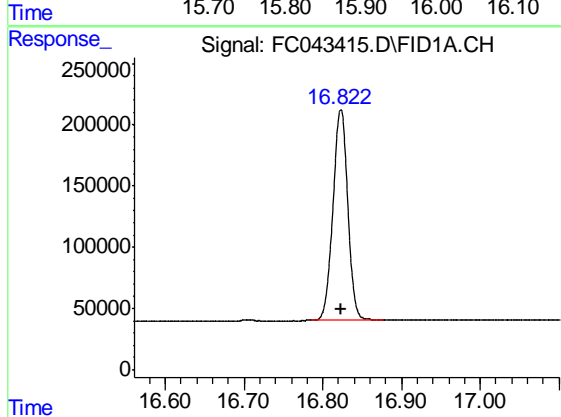
#14 n-Tetracosane (C24)

R.T.: 14.866 min
Delta R.T.: 0.000 min
Response: 2321924
Conc: 18.12 ug/ml



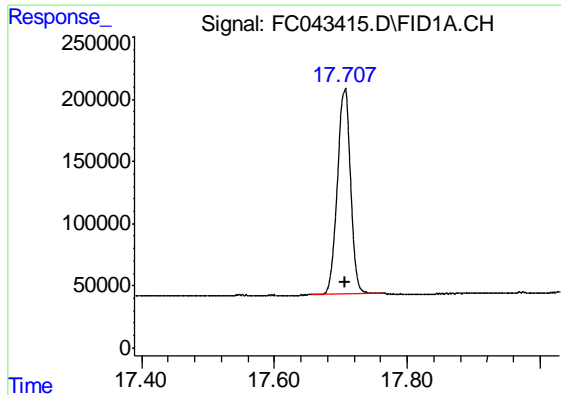
#15 n-Hexacosane (C26)

R.T.: 15.879 min
Delta R.T.: 0.000 min
Response: 2260532
Conc: 17.95 ug/ml



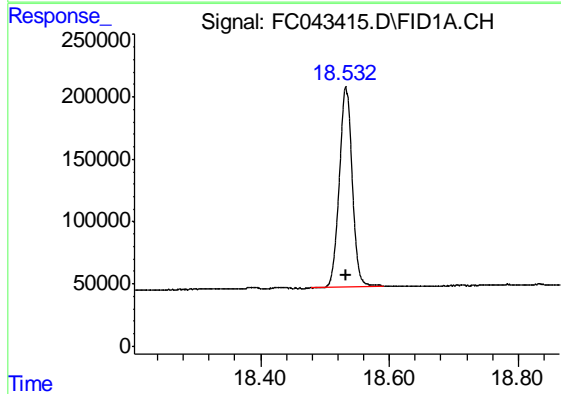
#16 n-Octacosane (C28)

R.T.: 16.823 min
Delta R.T.: 0.000 min
Response: 2249389
Conc: 18.32 ug/ml



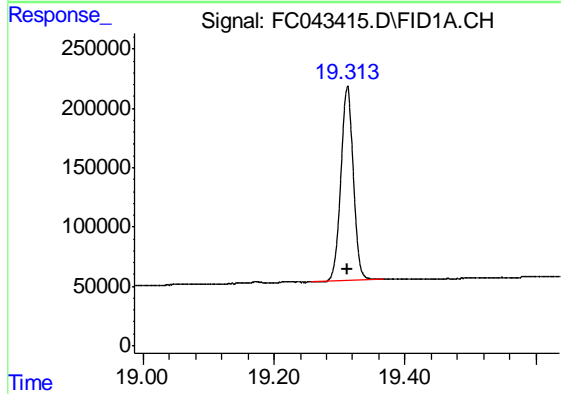
#17 n-Tricontane (C30)

R.T.: 17.706 min
Delta R.T.: 0.000 min
Response: 2289381
Conc: 18.98 ug/ml



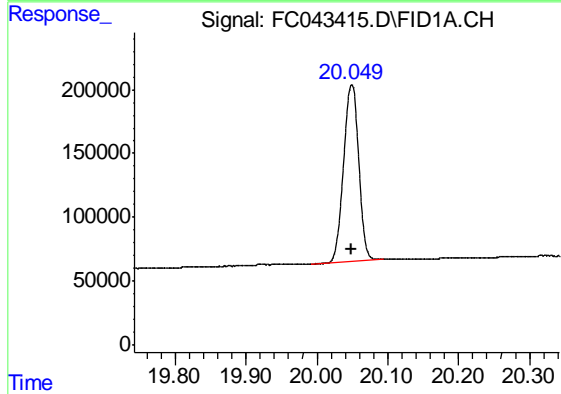
#18 n-Dotriacontane (C32)

R.T.: 18.532 min
Delta R.T.: 0.000 min
Response: 2239693
Conc: 19.63 ug/ml



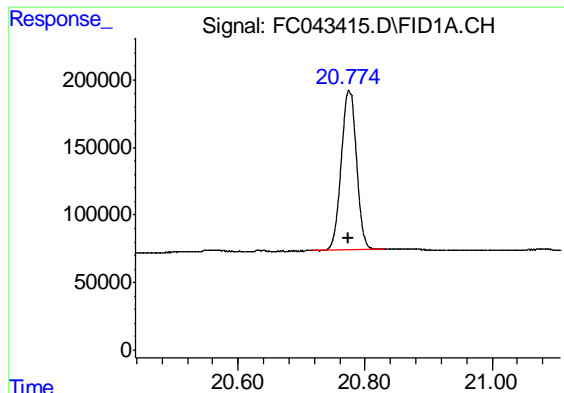
#19 n-Tetatriacontane (C34)

R.T.: 19.312 min
Delta R.T.: 0.000 min
Response: 2158305
Conc: 20.06 ug/ml



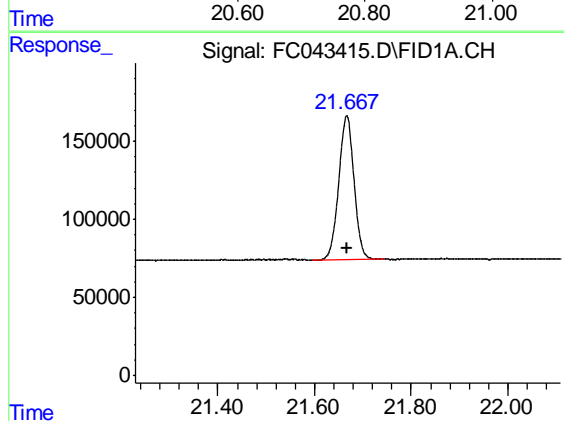
#20 n-Hexatriacontane (C36)

R.T.: 20.049 min
Delta R.T.: 0.000 min
Response: 2053761
Conc: 19.51 ug/ml



#21 n-Octatriacontane (C38)

R.T.: 20.775 min
Delta R.T.: 0.000 min
Response: 1974717
Conc: 21.11 ug/ml



#22 n-Tetracontane (C40)

R.T.: 21.667 min
Delta R.T.: 0.000 min
Response: 2029533
Conc: 21.01 ug/ml