

Data Path : Z:\pestpcbsrv\HPCHEM1\FID_C\Data\FC091018AL\
 Data File : FC036226.D
 Signal(s) : FID1A.CH
 Acq On : 10 Sep 2018 19:59
 Operator : AJ\SJ
 Sample : I.BLK
 Misc :
 ALS Vial : 1 Sample Multiplier: 1

Integration File: autoint1.e
 Quant Time: Sep 11 05:42:30 2018
 Quant Method : Z:\PESTPCBSRV\HPCHEM1\FID_C\Method\Alaphatic EPH 082118.M
 Quant Title : GC Extractables
 QLast Update : Tue Aug 21 16:09:01 2018
 Response via : Initial Calibration
 Integrator: ChemStation 6890 Scale Mode: Large solvent peaks clipped

Volume Inj. : 1 ul
 Signal Phase : Rxi-lms
 Signal Info : 20M x 0.18mm x 0.18um

Compound	R.T.	Response	Conc Units

System Monitoring Compounds			
Target Compounds			
18) T n-Dotriacontane (C32)	18.377	278705	2.952 ug/ml
19) T n-Tetratriacontane (C34)	19.157	59343	0.670 ug/ml
20) T n-Hexatriacontane (C36)	19.832	117610	1.388 ug/ml
21) T n-Octatriacontane (C38)	20.617	1134943	13.610 ug/ml

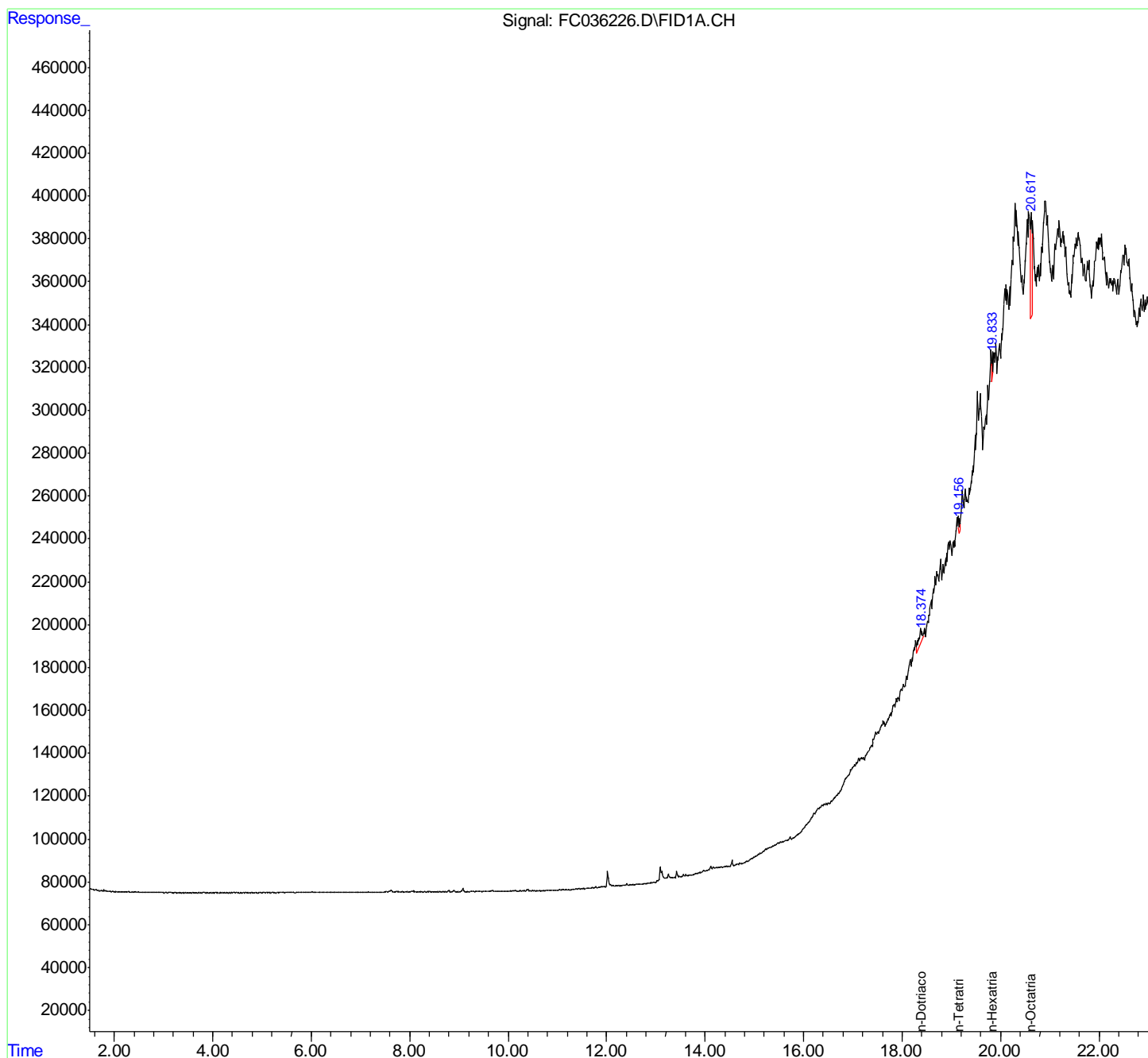
(f)=RT Delta > 1/2 Window

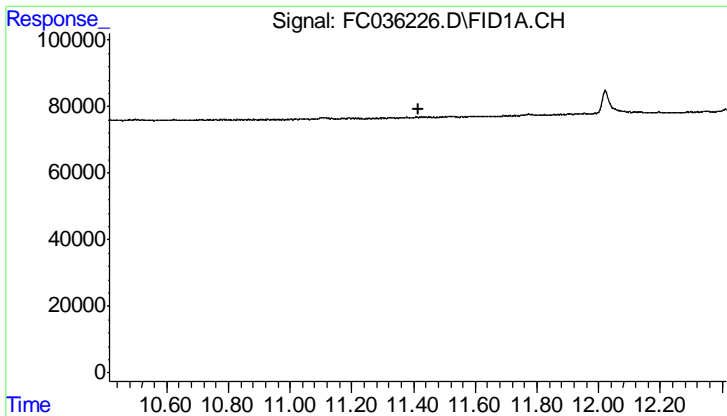
(m)=manual int.

Data Path : Z:\pestpcbsrv\HPCHEM1\FID_C\Data\FC091018AL\
 Data File : FC036226.D
 Signal(s) : FID1A.CH
 Acq On : 10 Sep 2018 19:59
 Operator : AJ\SJ
 Sample : I.BLK
 Misc :
 ALS Vial : 1 Sample Multiplier: 1

Integration File: autoint1.e
 Quant Time: Sep 11 05:42:30 2018
 Quant Method : Z:\PESTPCBSRV\HPCHEM1\FID_C\Method\Alaphatic EPH 082118.M
 Quant Title : GC Extractables
 QLast Update : Tue Aug 21 16:09:01 2018
 Response via : Initial Calibration
 Integrator: ChemStation 6890 Scale Mode: Large solvent peaks clipped

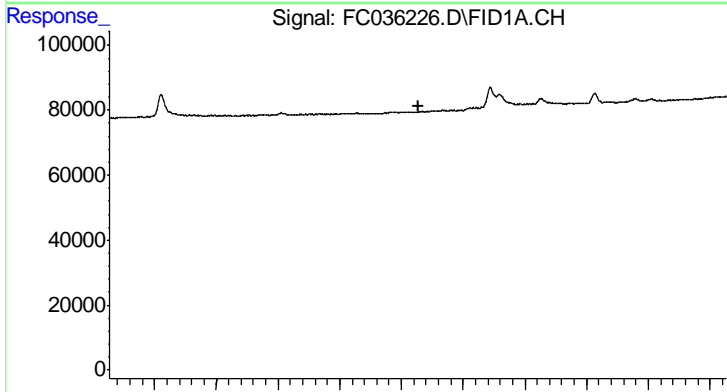
Volume Inj. : 1 ul
 Signal Phase : Rxi-lms
 Signal Info : 20M x 0.18mm x 0.18um





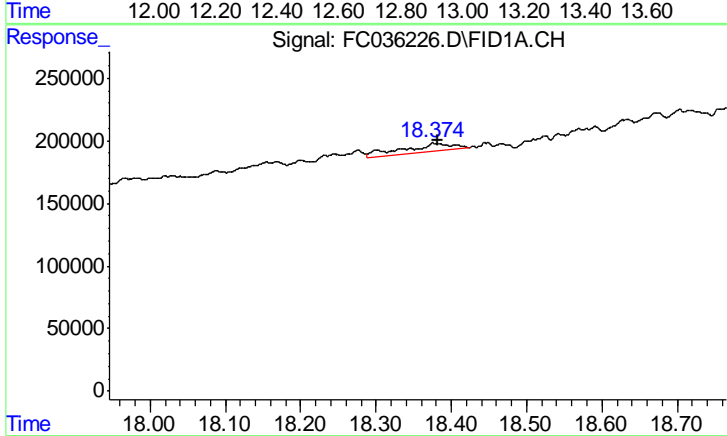
#9 ortho-Terphenyl (SURR)

R.T.: 0.000 min
 Exp R.T.: 11.414 min
 Response: 0
 Conc: N.D.



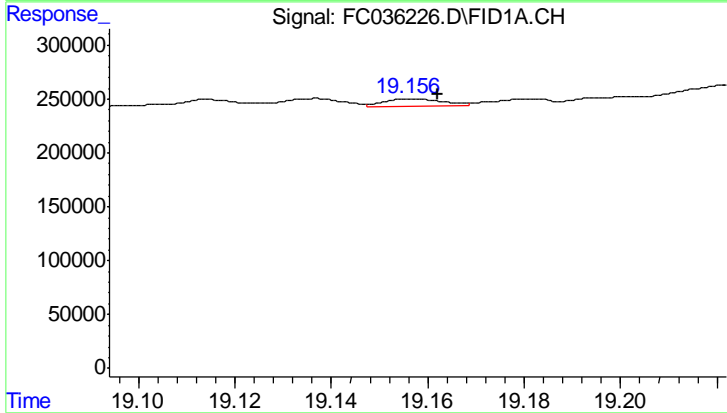
#12 1-chlorooctadecane (SURR)

R.T.: 0.000 min
 Exp R.T.: 12.853 min
 Response: 0
 Conc: N.D.



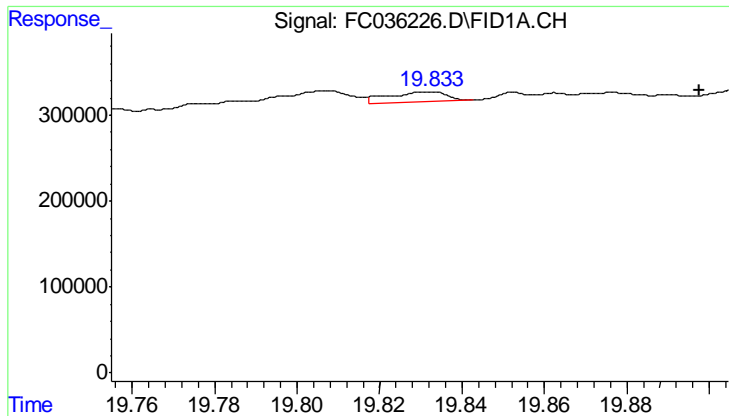
#18 n-Dotriacontane (C32)

R.T.: 18.377 min
 Delta R.T.: -0.004 min
 Response: 278705
 Conc: 2.95 ug/ml



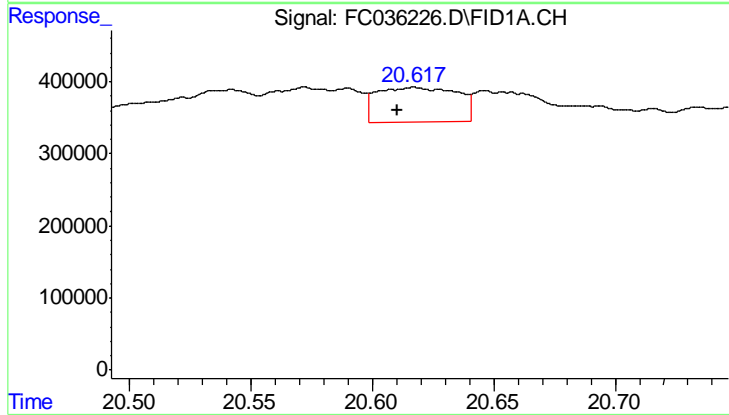
#19 n-Tetratriacontane (C34)

R.T.: 19.157 min
 Delta R.T.: -0.005 min
 Response: 59343
 Conc: 0.67 ug/ml



#20 n-Hexatriacontane (C36)

R.T.: 19.832 min
Delta R.T.: -0.066 min
Response: 117610
Conc: 1.39 ug/ml



#21 n-Octatriacontane (C38)

R.T.: 20.617 min
Delta R.T.: 0.007 min
Response: 1134943
Conc: 13.61 ug/ml