

Data Path : Z:\pestpcbsrv\HPCHEM1\FID\_C\Data\FC091020AL\  
 Data File : FC049523.D  
 Signal(s) : FID1A.CH  
 Acq On : 10 Sep 2020 20:07  
 Operator : DD\AJ  
 Sample : L3951-02  
 Misc :  
 ALS Vial : 19 Sample Multiplier: 1

Instrument :  
 FID\_C  
 ClientSampleId :  
 PC-1

Integration File: autoint1.e  
 Quant Time: Sep 11 02:14:16 2020  
 Quant Method : Z:\pestpcbsrv\HPCHEM1\FID\_C\Method\Alaphatic EPH 090820.M  
 Quant Title : GC Extractables  
 QLast Update : Wed Sep 09 05:58:47 2020  
 Response via : Initial Calibration  
 Integrator: ChemStation 6890 Scale Mode: Large solvent peaks clipped

Volume Inj. : 1 ul  
 Signal Phase : Rxi-1ms  
 Signal Info : 20M x 0.18mm x 0.18um

Compound	R.T.	Response	Conc Units
-----			
System Monitoring Compounds			
9) S ortho-Terphenyl (SURR)	11.672	3928727	34.194 ug/ml
Spiked Amount	50.000	Recovery	= 68.39%
12) S 1-chlorooctadecane (S...	13.098	6805879	76.409 ug/ml
Spiked Amount	50.000	Recovery	= 152.82%

Target Compounds

(f)=RT Delta > 1/2 Window

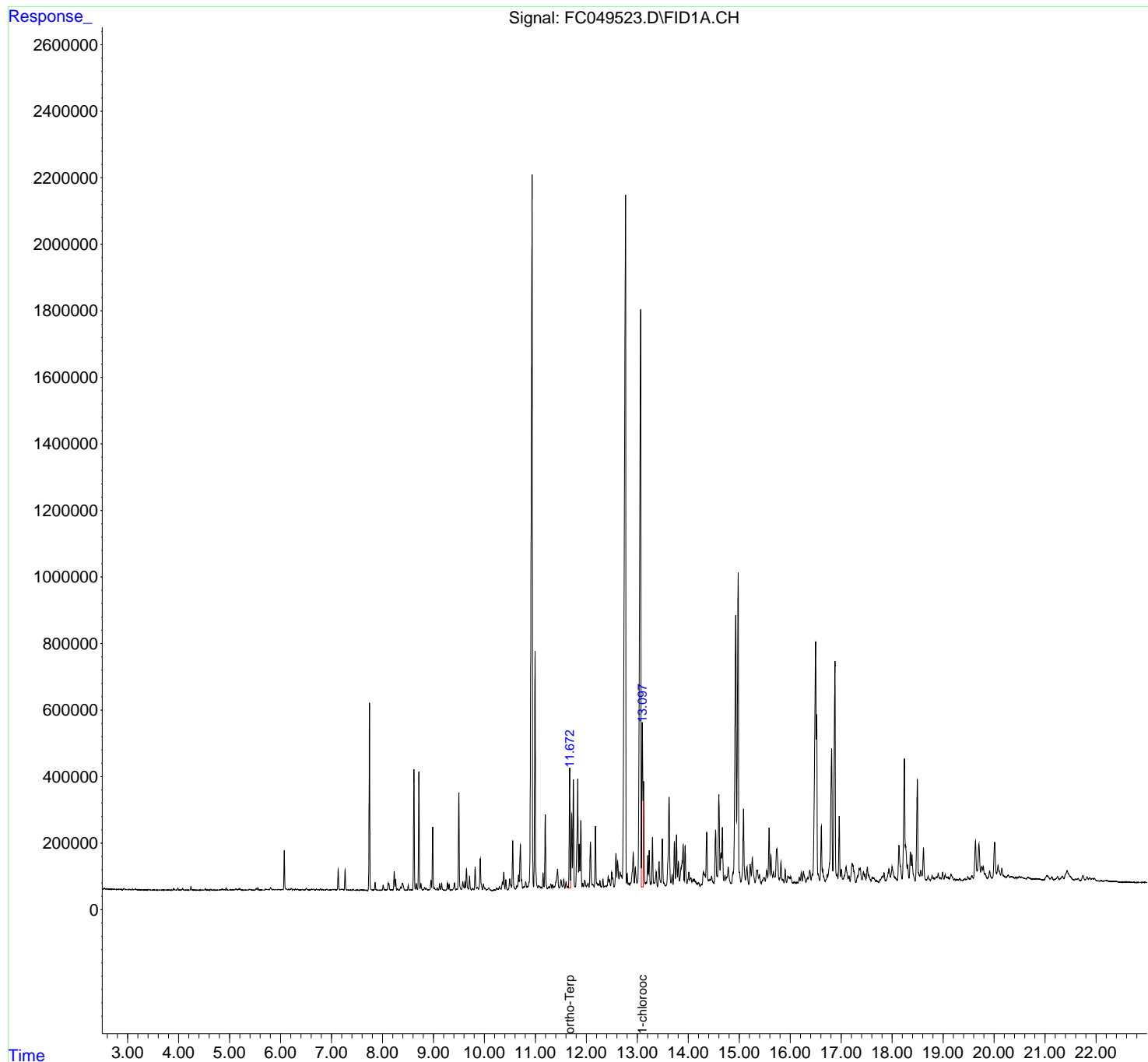
(m)=manual int.

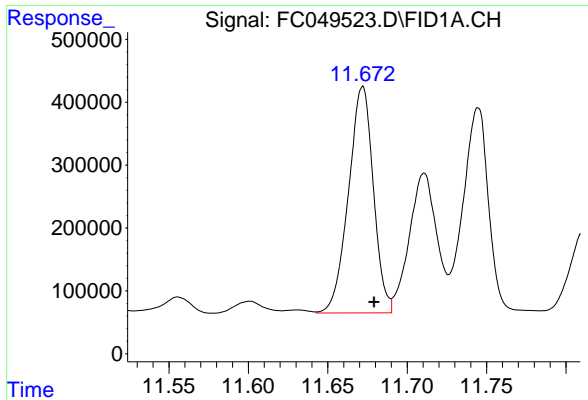
Data Path : Z:\pestpcbsrv\HPCHEM1\FID\_C\Data\FC091020AL\  
 Data File : FC049523.D  
 Signal(s) : FID1A.CH  
 Acq On : 10 Sep 2020 20:07  
 Operator : DD\AJ  
 Sample : L3951-02  
 Misc :  
 ALS Vial : 19 Sample Multiplier: 1

Instrument :  
 FID\_C  
 ClientSampleId :  
 PC-1

Integration File: autoint1.e  
 Quant Time: Sep 11 02:14:16 2020  
 Quant Method : Z:\pestpcbsrv\HPCHEM1\FID\_C\Method\Aliphatic EPH 090820.M  
 Quant Title : GC Extractables  
 QLast Update : Wed Sep 09 05:58:47 2020  
 Response via : Initial Calibration  
 Integrator: ChemStation 6890 Scale Mode: Large solvent peaks clipped

Volume Inj. : 1 ul  
 Signal Phase : Rxi-1ms  
 Signal Info : 20M x 0.18mm x 0.18um

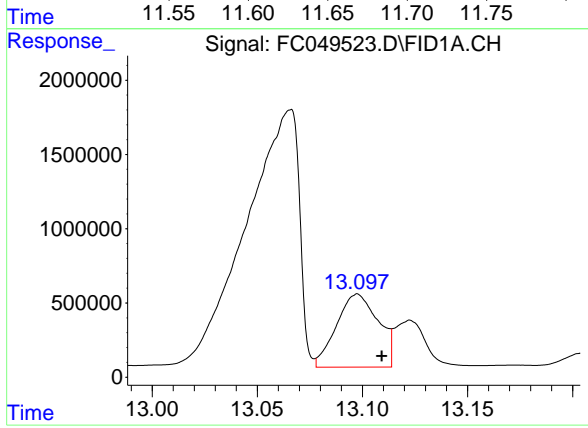




#9 ortho-Terphenyl (SURR)

R.T.: 11.672 min  
Delta R.T.: -0.007 min  
Response: 3928727  
Conc: 34.19 ug/ml

Instrument :  
FID\_C  
ClientSampled :  
PC-1



#12 1-chlorooctadecane (SURR)

R.T.: 13.098 min  
Delta R.T.: -0.012 min  
Response: 6805879  
Conc: 76.41 ug/ml