

Data Path : Z:\pestpcbsrv\HPCHEM1\FID\_C\Data\FC091322AL\  
 Data File : FC061495.D  
 Signal(s) : FID1A.ch  
 Acq On : 14 Sep 2022 01:33  
 Operator : YP/AJ  
 Sample : N4588-03  
 Misc :  
 ALS Vial : 15 Sample Multiplier: 1

Instrument :  
 FID\_C  
 ClientSampleId :  
 40152-EPH-2

Integration File: sample.E  
 Quant Time: Sep 14 06:50:27 2022  
 Quant Method : Z:\pestpcbsrv\HPCHEM1\FID\_C\Method\Aliphatic EPH 082222.M  
 Quant Title : GC Extractables  
 QLast Update : Wed Aug 31 11:58:37 2022  
 Response via : Initial Calibration  
 Integrator: ChemStation

Volume Inj. : 1 ul  
 Signal Phase : Rxi-1ms  
 Signal Info : 20M x 0.18mm x 0.18um

Compound	R.T.	Response	Conc Units
-----			
System Monitoring Compounds			
9) S ortho-Terphenyl (SURR)	11.573	4528576	25.581 ug/ml
Spiked Amount	50.000	Recovery	= 51.16%
12) S 1-chlorooctadecane (S...	13.010	3565852	25.461 ug/ml
Spiked Amount	50.000	Recovery	= 50.92%

Target Compounds

-----

(f)=RT Delta > 1/2 Window

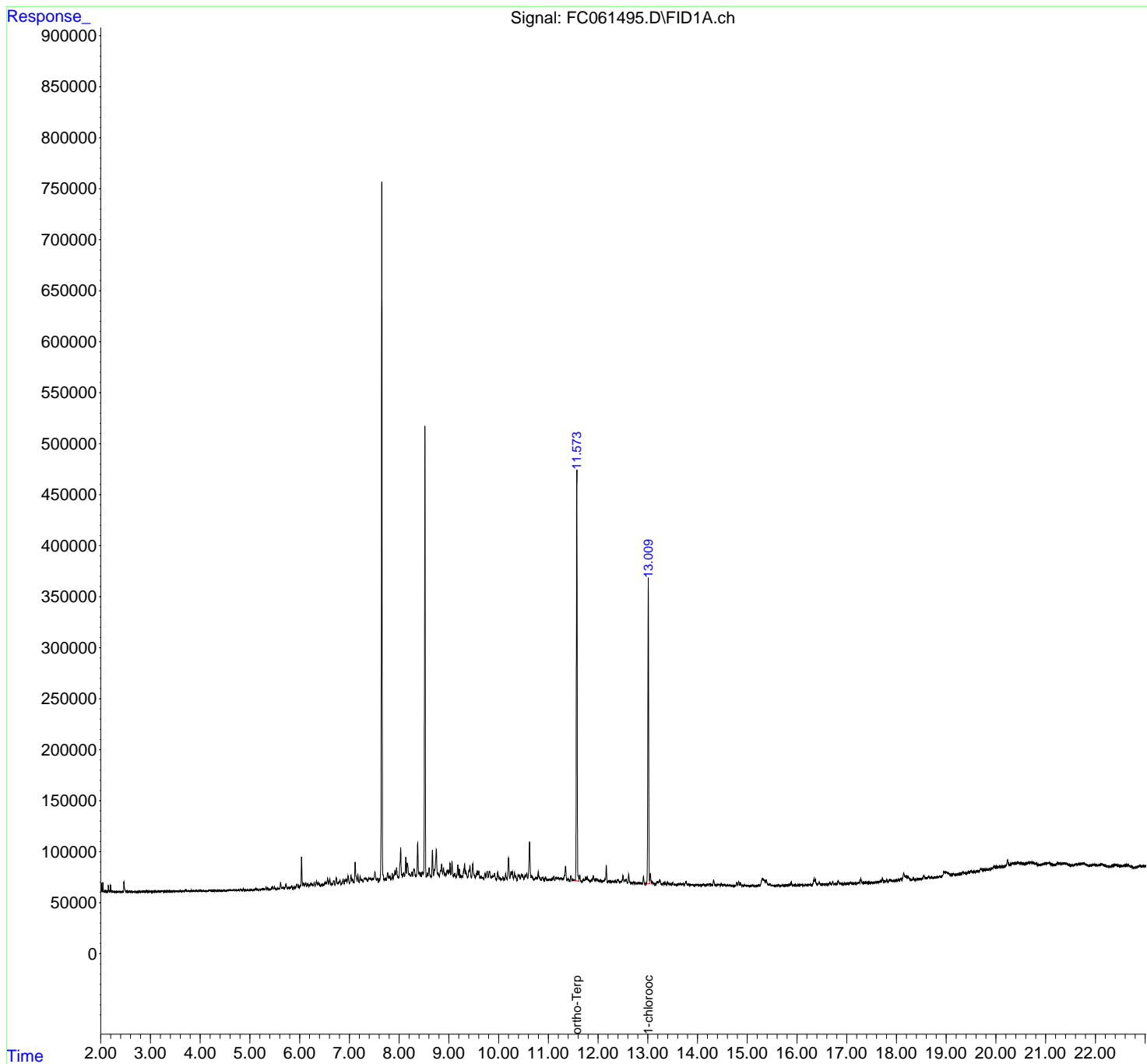
(m)=manual int.

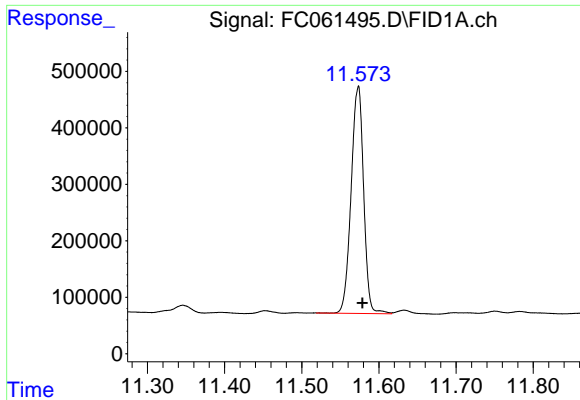
Data Path : Z:\pestpcbsrv\HPCHEM1\FID\_C\Data\FC091322AL\  
 Data File : FC061495.D  
 Signal(s) : FID1A.ch  
 Acq On : 14 Sep 2022 01:33  
 Operator : YP/AJ  
 Sample : N4588-03  
 Misc :  
 ALS Vial : 15 Sample Multiplier: 1

Instrument :  
 FID\_C  
 ClientSampleId :  
 40152-EPH-2

Integration File: sample.E  
 Quant Time: Sep 14 06:50:27 2022  
 Quant Method : Z:\pestpcbsrv\HPCHEM1\FID\_C\Method\Aliphatic EPH 082222.M  
 Quant Title : GC Extractables  
 QLast Update : Wed Aug 31 11:58:37 2022  
 Response via : Initial Calibration  
 Integrator: ChemStation

Volume Inj. : 1 ul  
 Signal Phase : Rxi-1ms  
 Signal Info : 20M x 0.18mm x 0.18um

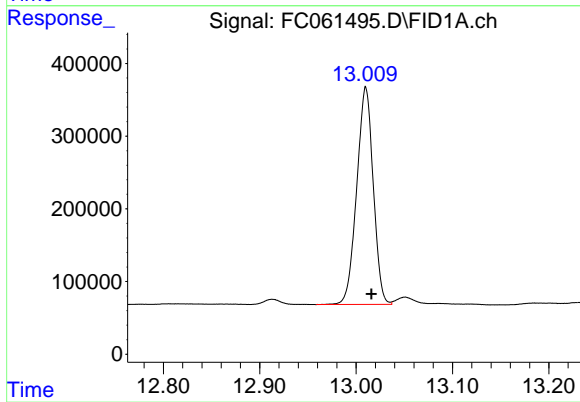




#9 ortho-Terphenyl (SURR)

R.T.: 11.573 min  
Delta R.T.: -0.006 min  
Response: 4528576  
Conc: 25.58 ug/ml

Instrument :  
FID\_C  
ClientSampleId :  
40152-EPH-2



#12 1-chlorooctadecane (SURR)

R.T.: 13.010 min  
Delta R.T.: -0.006 min  
Response: 3565852  
Conc: 25.46 ug/ml