

Data Path : Z:\pestpcbsrv\HPCHEM1\FID_C\Data\FC091422AL\
 Data File : FC061509.D
 Signal(s) : FID1A.ch
 Acq On : 14 Sep 2022 14:08
 Operator : YP/AJ
 Sample : N4592-01DL 10X
 Misc :
 ALS Vial : 8 Sample Multiplier: 1

Instrument :
 FID_C
ClientSampleId :
 EO-02-091222DL

Manual Integrations
APPROVED
 Reviewed By :Yogesh Patel 09/15/2022
 Supervised By :Ankita Jodhani 09/15/2022

Integration File: autoint1.e
 Quant Time: Sep 15 04:20:01 2022
 Quant Method : Z:\pestpcbsrv\HPCHEM1\FID_C\Method\Aliphatic EPH 082222.M
 Quant Title : GC Extractables
 QLast Update : Wed Aug 31 11:58:37 2022
 Response via : Initial Calibration
 Integrator: ChemStation

Volume Inj. : 1 ul
 Signal Phase : Rxi-1ms
 Signal Info : 20M x 0.18mm x 0.18um

Compound	R.T.	Response	Conc Units

System Monitoring Compounds			
9) S ortho-Terphenyl (SURR)	11.570	575985	3.254 ug/mlm
Spiked Amount	50.000	Recovery =	6.51%
12) S 1-chlorooctadecane (S...	13.006	871862	6.225 ug/ml
Spiked Amount	50.000	Recovery =	12.45%

Target Compounds

(f)=RT Delta > 1/2 Window

(m)=manual int.

Data Path : Z:\pestpcbsrv\HPCHEM1\FID_C\Data\FC091422AL\
 Data File : FC061509.D
 Signal(s) : FID1A.ch
 Acq On : 14 Sep 2022 14:08
 Operator : YP/AJ
 Sample : N4592-01DL 10X
 Misc :
 ALS Vial : 8 Sample Multiplier: 1

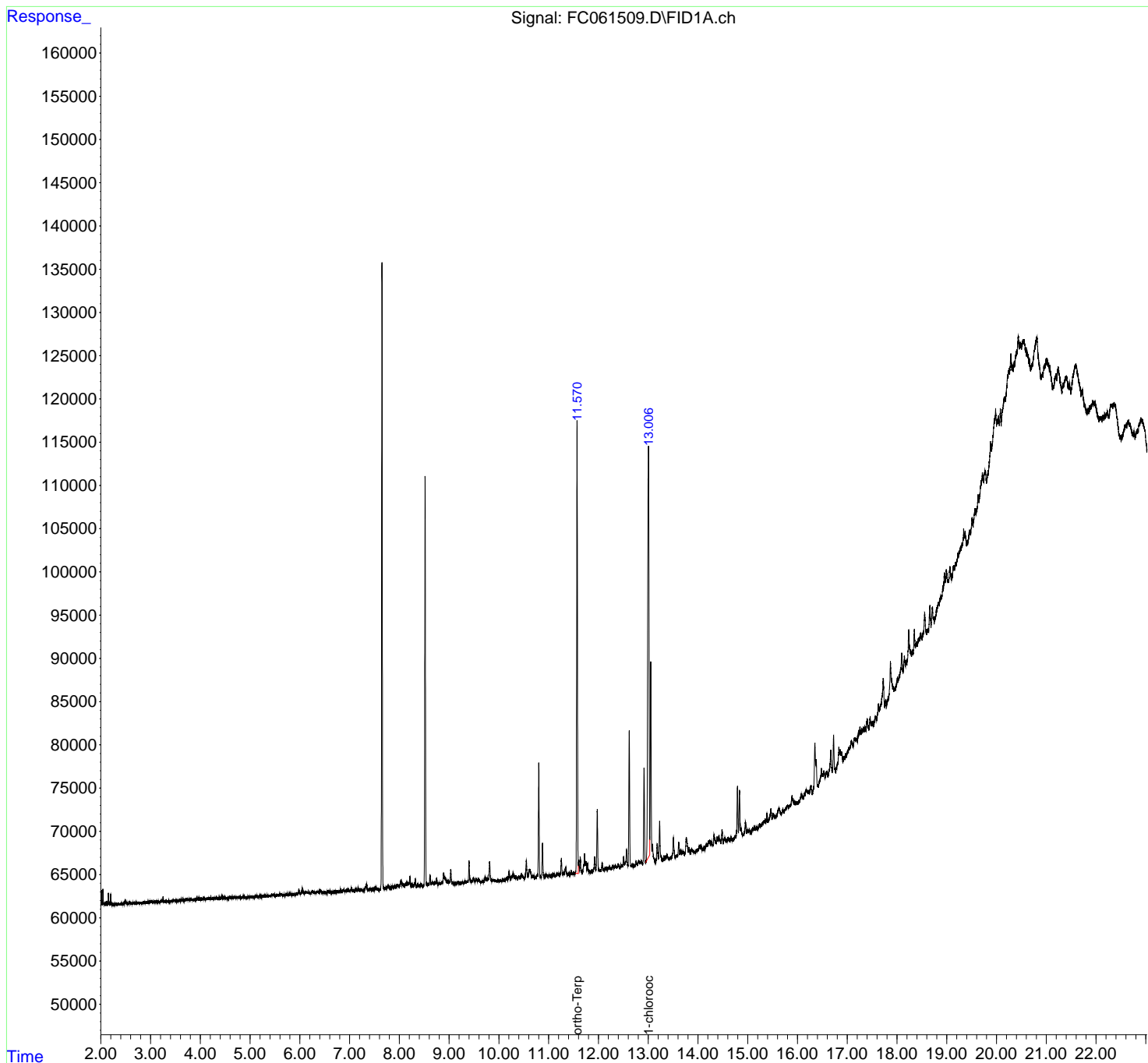
Instrument :
 FID_C
ClientSampleId :
 EO-02-091222DL

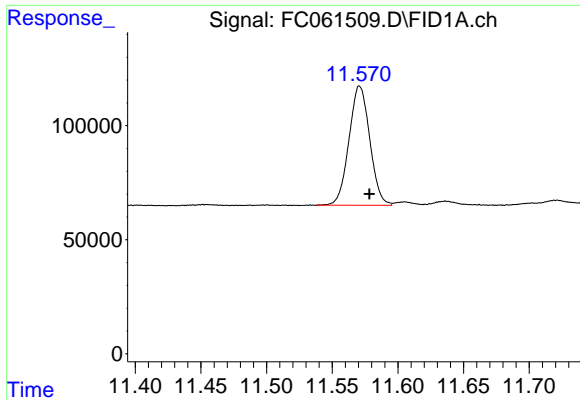
**Manual Integrations
 APPROVED**

Reviewed By :Yogesh Patel 09/15/2022
 Supervised By :Ankita Jodhani 09/15/2022

Integration File: autoint1.e
 Quant Time: Sep 15 04:20:01 2022
 Quant Method : Z:\pestpcbsrv\HPCHEM1\FID_C\Method\Aliphatic EPH 082222.M
 Quant Title : GC Extractables
 QLast Update : Wed Aug 31 11:58:37 2022
 Response via : Initial Calibration
 Integrator: ChemStation

Volume Inj. : 1 ul
 Signal Phase : Rxi-1ms
 Signal Info : 20M x 0.18mm x 0.18um





#9 ortho-Terphenyl (SURR)

R.T.: 11.570 min
 Delta R.T.: -0.008 min
 Response: 575985
 Conc: 3.25 ug/ml

Instrument :

FID_C

ClientSampleId :

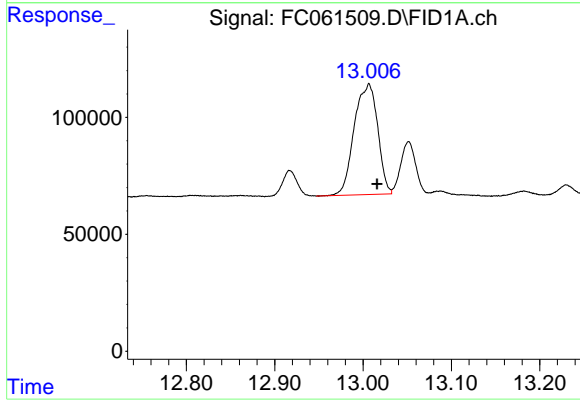
EO-02-091222DL

Manual Integrations

APPROVED

Reviewed By :Yogesh Patel 09/15/2022

Supervised By :Ankita Jodhani 09/15/2022



#12 1-chlorooctadecane (SURR)

R.T.: 13.006 min
 Delta R.T.: -0.010 min
 Response: 871862
 Conc: 6.23 ug/ml