

Data Path : Z:\pestpcbsrv\HPCHEM1\FID_C\Data\FC091619AL\
 Data File : FC043509.D
 Signal(s) : FID1A.CH
 Acq On : 16 Sep 2019 23:08
 Operator : DD\AJ
 Sample : K4861-10
 Misc :
 ALS Vial : 18 Sample Multiplier: 1

Integration File: sample.E
 Quant Time: Sep 17 03:44:36 2019
 Quant Method : Z:\pestpcbsrv\HPCHEM1\FID_C\Method\Alaphatic EPH 091619.M
 Quant Title : GC Extractables
 QLast Update : Mon Sep 16 12:41:51 2019
 Response via : Initial Calibration
 Integrator: ChemStation 6890 Scale Mode: Large solvent peaks clipped

Volume Inj. : 1 ul
 Signal Phase : Rxi-1ms
 Signal Info : 20M x 0.18mm x 0.18um

Compound	R.T.	Response	Conc Units
System Monitoring Compounds			
9) S ortho-Terphenyl (SURR)	11.595	4621556	32.376 ug/ml
Spiked Amount	50.000	Recovery	= 64.75%
12) S 1-chlorooctadecane (S...	13.017	3670919	33.151 ug/ml
Spiked Amount	50.000	Recovery	= 66.30%

Target Compounds

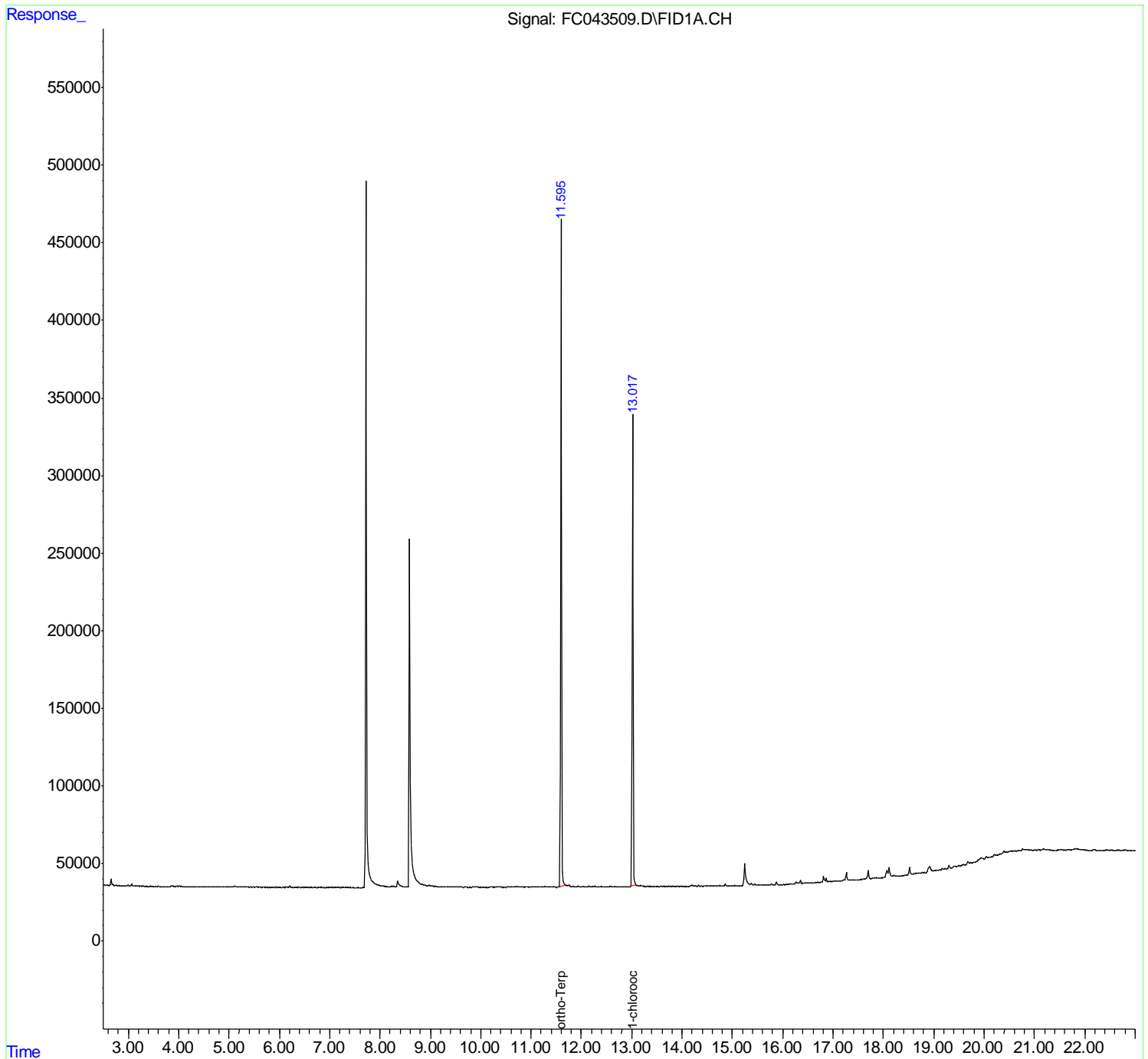
(f)=RT Delta > 1/2 Window

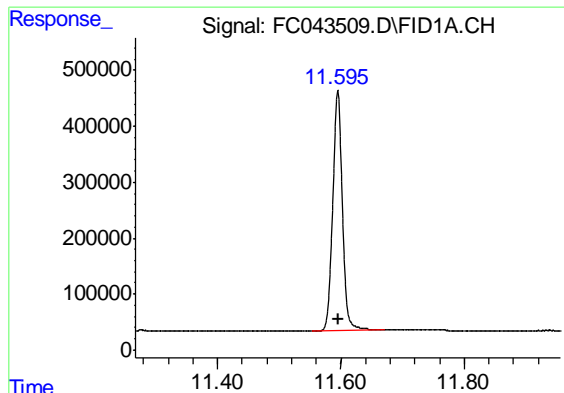
(m)=manual int.

Data Path : Z:\pestpcbsrv\HPCHEM1\FID_C\Data\FC091619AL\
Data File : FC043509.D
Signal(s) : FID1A.CH
Acq On : 16 Sep 2019 23:08
Operator : DD\AJ
Sample : K4861-10
Misc :
ALS Vial : 18 Sample Multiplier: 1

Integration File: sample.E
Quant Time: Sep 17 03:44:36 2019
Quant Method : Z:\pestpcbsrv\HPCHEM1\FID_C\Method\Alaphatic EPH 091619.M
Quant Title : GC Extractables
QLast Update : Mon Sep 16 12:41:51 2019
Response via : Initial Calibration
Integrator: ChemStation 6890 Scale Mode: Large solvent peaks clipped

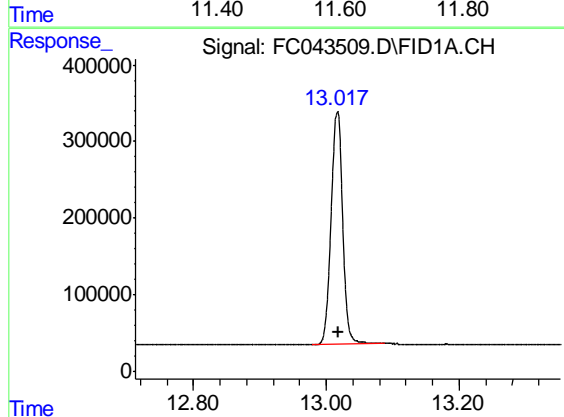
Volume Inj. : 1 ul
Signal Phase : Rxi-1ms
Signal Info : 20M x 0.18mm x 0.18um





#9 ortho-Terphenyl (SURR)

R.T.: 11.595 min
Delta R.T.: 0.000 min
Response: 4621556
Conc: 32.38 ug/ml



#12 1-chlorooctadecane (SURR)

R.T.: 13.017 min
Delta R.T.: 0.000 min
Response: 3670919
Conc: 33.15 ug/ml