

Data Path : Z:\pestpcbsrv\HPCHEM1\FID_C\Data\FC091620AL\
Data File : FC049593.D
Signal(s) : FID1A.CH
Acq On : 16 Sep 2020 13:50
Operator : DD\AJ
Sample : PB131654BL
Misc :
ALS Vial : 1 Sample Multiplier: 1

Integration File: autoint1.e
Quant Time: Sep 17 02:04:32 2020
Quant Method : Z:\pestpcbsrv\HPCHEM1\FID_C\Method\Alaphatic EPH 090820.M
Quant Title : GC Extractables
QLast Update : Wed Sep 09 05:58:47 2020
Response via : Initial Calibration
Integrator: ChemStation 6890 Scale Mode: Large solvent peaks clipped

Volume Inj. : 1 ul
Signal Phase : Rxi-1ms
Signal Info : 20M x 0.18mm x 0.18um

Compound	R.T.	Response	Conc Units

System Monitoring Compounds			
Target Compounds			
11) T n-Heneicosane (C21)	13.269	81673	0.767 ug/ml
20) T n-Hexatriacontane (C36)	20.166	23872	0.296 ug/ml

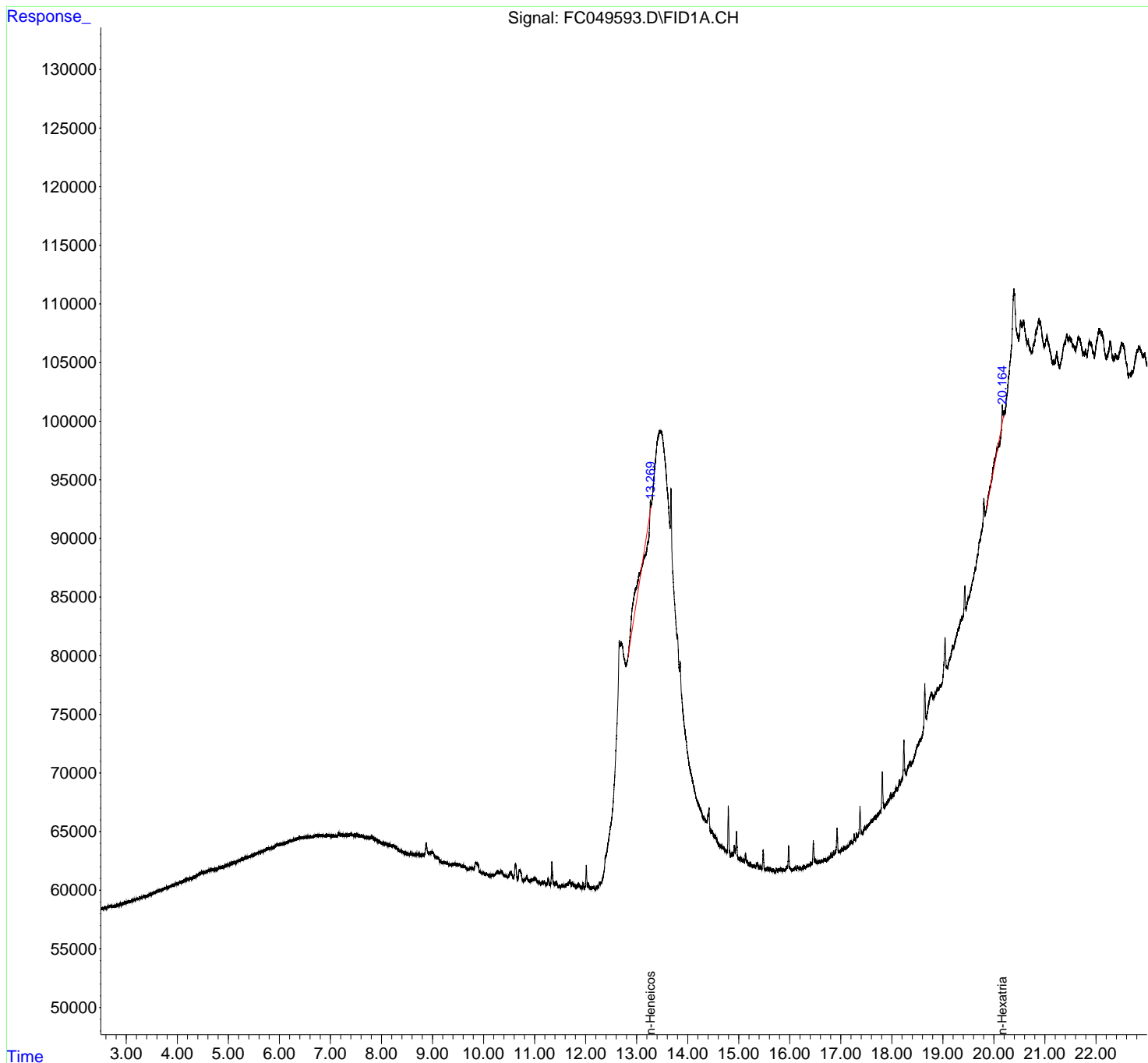
(f)=RT Delta > 1/2 Window

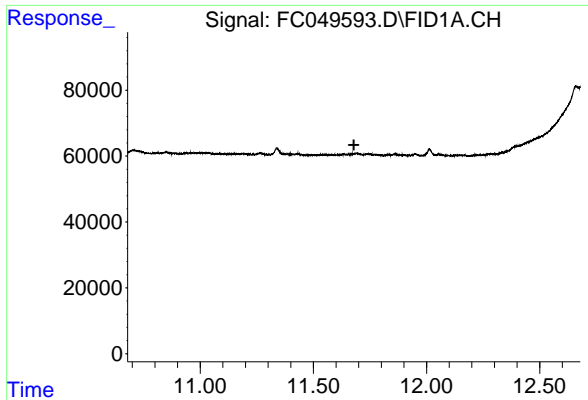
(m)=manual int.

Data Path : Z:\pestpcbsrv\HPCHEM1\FID_C\Data\FC091620AL\
Data File : FC049593.D
Signal(s) : FID1A.CH
Acq On : 16 Sep 2020 13:50
Operator : DD\AJ
Sample : PB131654BL
Misc :
ALS Vial : 1 Sample Multiplier: 1

Integration File: autoint1.e
Quant Time: Sep 17 02:04:32 2020
Quant Method : Z:\pestpcbsrv\HPCHEM1\FID_C\Method\Aliphatic EPH 090820.M
Quant Title : GC Extractables
QLast Update : Wed Sep 09 05:58:47 2020
Response via : Initial Calibration
Integrator: ChemStation 6890 Scale Mode: Large solvent peaks clipped

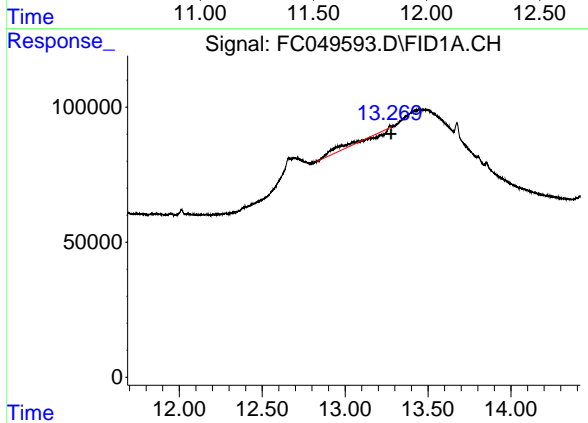
Volume Inj. : 1 ul
Signal Phase : Rxi-1ms
Signal Info : 20M x 0.18mm x 0.18um





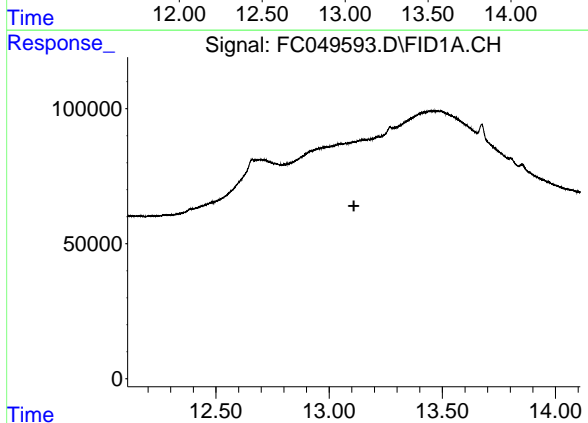
#9 ortho-Terphenyl (SURR)

R.T.: 0.000 min
 Exp R.T. : 11.679 min
 Response: 0
 Conc: N.D.



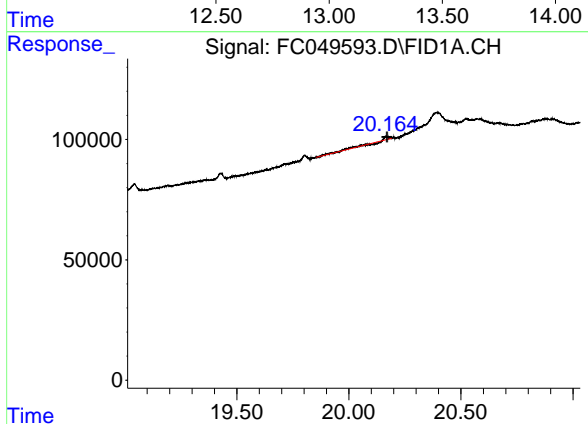
#11 n-Heneicosane (C21)

R.T.: 13.269 min
 Delta R.T.: -0.007 min
 Response: 81673
 Conc: 0.77 ug/ml



#12 1-chlorooctadecane (SURR)

R.T.: 0.000 min
 Exp R.T. : 13.109 min
 Response: 0
 Conc: N.D.



#20 n-Hexatriacontane (C36)

R.T.: 20.166 min
 Delta R.T.: -0.005 min
 Response: 23872
 Conc: 0.30 ug/ml