

Data Path : Z:\pestpcbsrv\HPCHEM1\FID_C\Data\FC091924AL\
 Data File : FC067187.D
 Signal(s) : FID1A.ch
 Acq On : 20 Sep 2024 01:41
 Operator : YP/AJ
 Sample : P4104-02
 Misc :
 ALS Vial : 27 Sample Multiplier: 1

Instrument :
 FID_C
ClientSampleId :
 WC-14-5-7.5A-EPH-2

Integration File: autoint1.e
 Quant Time: Sep 20 03:53:58 2024
 Quant Method : Z:\pestpcbsrv\HPCHEM1\FID_C\Method\Aliphatic EPH 091024.M
 Quant Title : GC Extractables
 QLast Update : Wed Sep 11 02:55:44 2024
 Response via : Initial Calibration
 Integrator: ChemStation

Volume Inj. : 1 ul
 Signal Phase : Rxi-1ms
 Signal Info : 20M x 0.18mm x 0.18um

Compound	R.T.	Response	Conc Units

System Monitoring Compounds			
12) S 1-chlorooctadecane (S...	12.944	3168377	32.434 ug/ml
Spiked Amount	50.000	Recovery	= 64.87%

Target Compounds

(f)=RT Delta > 1/2 Window

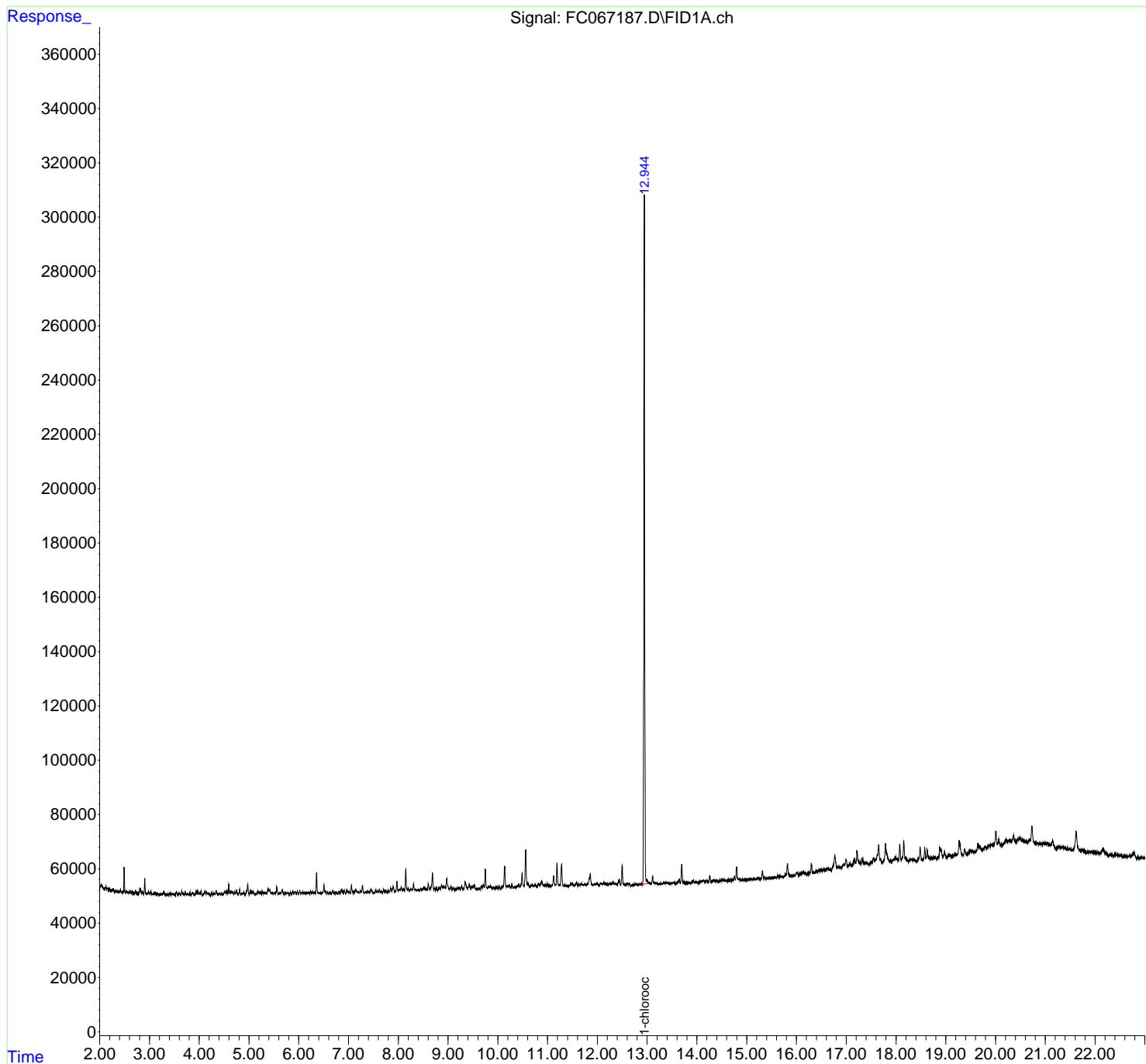
(m)=manual int.

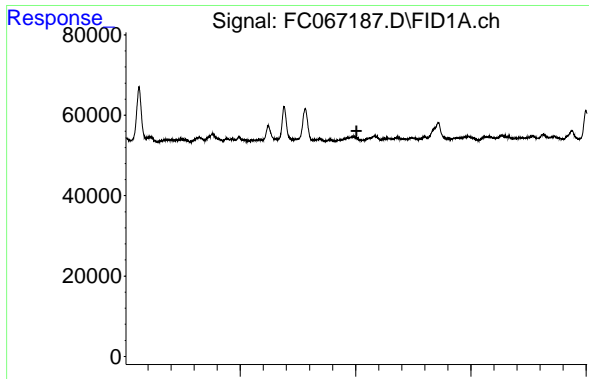
Data Path : Z:\pestpcbsrv\HPCHEM1\FID_C\Data\FC091924AL\
 Data File : FC067187.D
 Signal(s) : FID1A.ch
 Acq On : 20 Sep 2024 01:41
 Operator : YP/AJ
 Sample : P4104-02
 Misc :
 ALS Vial : 27 Sample Multiplier: 1

Instrument :
 FID_C
 ClientSampleId :
 WC-14-5-7.5A-EPH-2

Integration File: autoint1.e
 Quant Time: Sep 20 03:53:58 2024
 Quant Method : Z:\pestpcbsrv\HPCHEM1\FID_C\Method\Aliphatic EPH 091024.M
 Quant Title : GC Extractables
 QLast Update : Wed Sep 11 02:55:44 2024
 Response via : Initial Calibration
 Integrator: ChemStation

Volume Inj. : 1 ul
 Signal Phase : Rxi-1ms
 Signal Info : 20M x 0.18mm x 0.18um

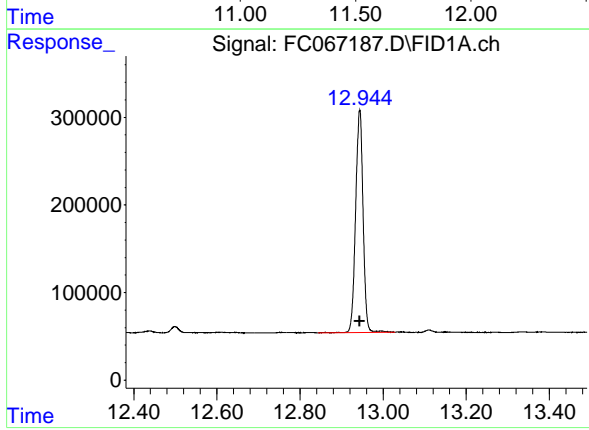




#9 ortho-Terphenyl (SURR)

R.T.: 0.000 min
Exp R.T.: 11.504 min
Response: 0
Conc: N.D.

Instrument :
FID_C
ClientSampleId :
WC-14-5-7.5A-EPH-2



#12 1-chlorooctadecane (SURR)

R.T.: 12.944 min
Delta R.T.: 0.000 min
Response: 3168377
Conc: 32.43 ug/ml