

Data Path : Z:\pestpcbsrv\HPCHEM1\ECD\_0\Data\P0092023\  
 Data File : P0098171.D  
 Signal(s) : Signal #1: ECD1A.ch Signal #2: ECD2B.ch  
 Acq On : 20 Sep 2023 11:03  
 Operator : YP/AJ  
 Sample : AR1242CCC500  
 Misc :  
 ALS Vial : 4 Sample Multiplier: 1

Instrument :  
 FID\_C  
 ClientSampleId :

Integration File signal 1: autoint1.e  
 Integration File signal 2: autoint2.e  
 Quant Time: Sep 20 15:38:18 2023  
 Quant Method : Z:\pestpcbsrv\HPCHEM1\ECD\_0\methods\P0091923.M  
 Quant Title : GC EXTRACTABLES  
 QLast Update : Wed Sep 20 07:12:48 2023  
 Response via : Initial Calibration  
 Integrator: ChemStation

Volume Inj. : 2 µl  
 Signal #1 Phase : ZB-MR1 Signal #2 Phase: ZB-MR2  
 Signal #1 Info : 30Mx0.32mmx 0.50µ Signal #2 Info : 30M x 0.32mm x 0.25µm

Compound	RT#1	RT#2	Resp#1	Resp#2	ng/ml	ng/ml
-----						
System Monitoring Compounds						
1) SA Tetrachlo...	4.497	3.639	142.1E6	61781063	47.501	55.648
2) SA Decachlor...	10.343	8.667	82422994	50078493	47.213	45.458
Target Compounds						
3) L1 AR-1016-1	5.677	4.727	37780029	19405113	410.821	432.954
4) L1 AR-1016-2	5.699	4.727	53734423	19405113	404.843	326.498
5) L1 AR-1016-3	5.762	4.923	33898619	14100779	400.264	436.211
6) L1 AR-1016-4	5.861	4.965	26996041	11130536	405.983	423.198
7) L1 AR-1016-5	6.159	5.179	26177330	14908850	420.286	432.326
8) L2 AR-1221-1	4.704	3.853	5384804	2247620	136.263	128.083
9) L2 AR-1221-2	4.795	3.940	7805724	3226710	261.085	242.405
10) L2 AR-1221-3	4.871	4.016	23943989	11075628	276.596	293.084
11) L3 AR-1232-1	4.871	4.016	23943989	11075628	331.140	351.366
12) L3 AR-1232-2	5.406	4.727	30550912	19405113	845.428	674.843
13) L3 AR-1232-3	5.699	4.923	53734423	14100779	870.270	917.185
14) L3 AR-1232-4	5.861	5.007	26996041	14317080	882.279	975.277
15) L3 AR-1232-5	6.000	5.179	24817858	14908850	983.725	940.291
16) L4 AR-1242-1	5.677	4.727	37780029	19405113	461.545	472.628
17) L4 AR-1242-2	5.699	4.727	53734423	19405113	460.361	355.205
18) L4 AR-1242-3	5.762	4.923	33898619	14100779	454.671	475.631
19) L4 AR-1242-4	5.861	5.007	26996041	14317080	457.643	454.044
20) L4 AR-1242-5	6.604	5.532	28304263	17350383	437.947	461.606
21) L5 AR-1248-1	5.677	4.727	37780029	19405113	626.754	624.378
22) L5 AR-1248-2	5.953	4.965	23368431	11130536	269.565	261.151
23) L5 AR-1248-3	6.159	5.007	26177330	14317080	285.141	311.993
24) L5 AR-1248-4	6.566	5.179	25097182	14908850	253.680	284.991
25) L5 AR-1248-5	6.604	5.574	28304263	14966253	269.825	288.731
26) L6 AR-1254-1	6.538	5.532	18878357	17350383	191.969	230.628
27) L6 AR-1254-2	6.763	5.681	21919017	4884408	147.396	73.031 #
28) L6 AR-1254-3	7.128	6.087	8550628	5735689	56.620	55.070
29) L6 AR-1254-4	7.415	6.316	6154166	4112804	56.949	64.146
30) L6 AR-1254-5	7.839	6.735	1512427	1729104	13.466	19.080 #
31) L7 AR-1260-1	7.296	6.204	502532	1495630	4.473	21.587 #
32) L7 AR-1260-2	7.552	6.406	2197775	560936	16.801	6.851 #
33) L7 AR-1260-3	7.920	6.559	210352	857464	2.181	11.070 #
34) L7 AR-1260-4	8.146	7.038	181487	80812	1.654	1.300
35) L7 AR-1260-5	8.478	7.254	800759	457632	3.901	3.226
36) L8 AR-1262-1	7.920	6.787	210352	73482	1.471	0.803 #
37) L8 AR-1262-2	8.478	7.038	800759	80812	3.252	0.992 #
38) L8 AR-1262-3	8.854f	7.560	719923	656470	4.357	10.325 #
39) L8 AR-1262-4	8.900	7.622	239182	147515	3.155	1.265 #
40) L8 AR-1262-5	9.553	8.147	438016	528512	5.084	9.732 #
41) L9 AR-1268-1	8.854f	7.560	719923	656470	2.576	3.540 #

Data Path : Z:\pestpcbsrv\HPCHEM1\ECD\_0\Data\P0092023\  
 Data File : P0098171.D  
 Signal(s) : Signal #1: ECD1A.ch Signal #2: ECD2B.ch  
 Acq On : 20 Sep 2023 11:03  
 Operator : YP/AJ  
 Sample : AR1242CCC500  
 Misc :  
 ALS Vial : 4 Sample Multiplier: 1

Instrument :  
 FID\_C  
 ClientSampleId :

Integration File signal 1: autoint1.e  
 Integration File signal 2: autoint2.e  
 Quant Time: Sep 20 15:38:18 2023  
 Quant Method : Z:\pestpcbsrv\HPCHEM1\ECD\_0\methods\P0091923.M  
 Quant Title : GC EXTRACTABLES  
 QLast Update : Wed Sep 20 07:12:48 2023  
 Response via : Initial Calibration  
 Integrator: ChemStation

Volume Inj. : 2 µl  
 Signal #1 Phase : ZB-MR1 Signal #2 Phase: ZB-MR2  
 Signal #1 Info : 30Mx0.32mmx 0.50µ Signal #2 Info : 30M x 0.32mm x 0.25µm

	Compound	RT#1	RT#2	Resp#1	Resp#2	ng/ml	ng/ml
42)	L9 AR-1268-2	8.900	7.622	239182	147515	0.957	0.906
43)	L9 AR-1268-3	9.123	7.926	234485	49964	1.089	1.478 #
44)	L9 AR-1268-4	9.553	8.147	438016	528512	4.807	8.843 #
45)	L9 AR-1268-5	9.996	8.411	351638	186552	0.489	0.437

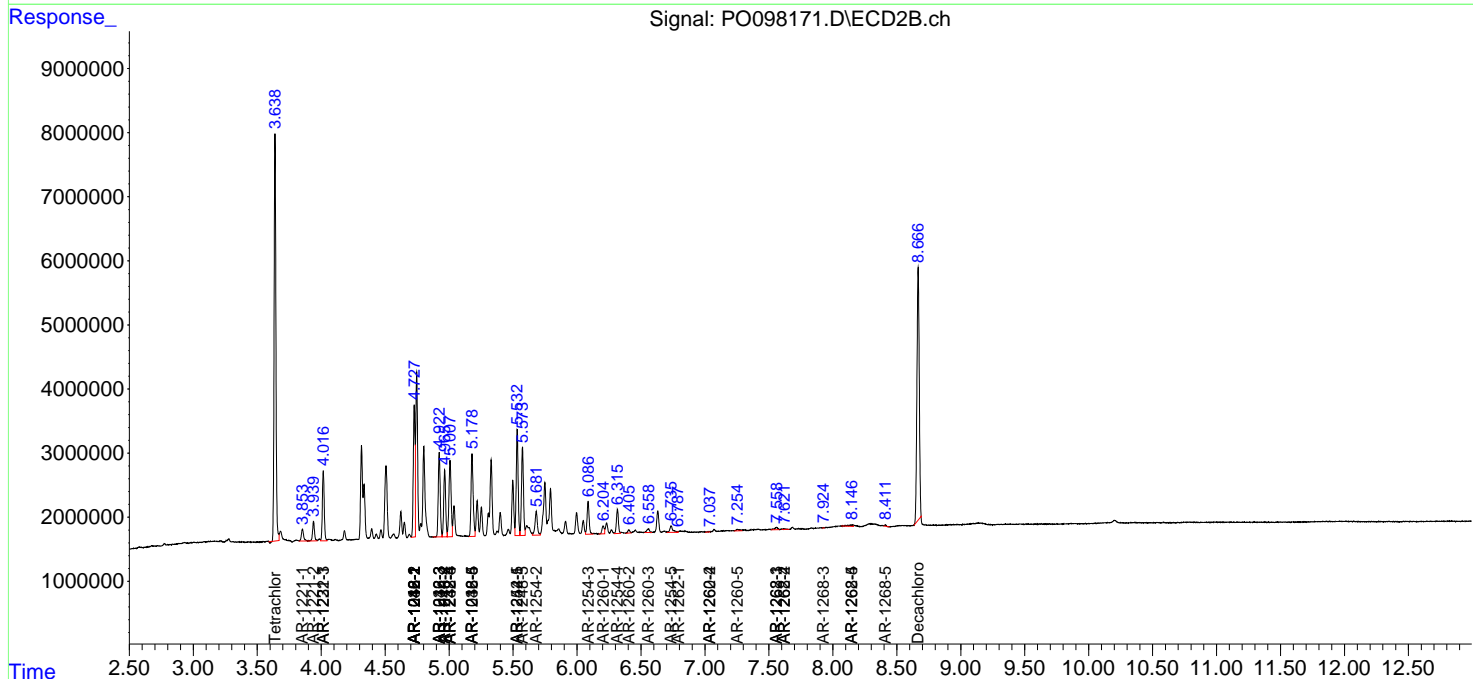
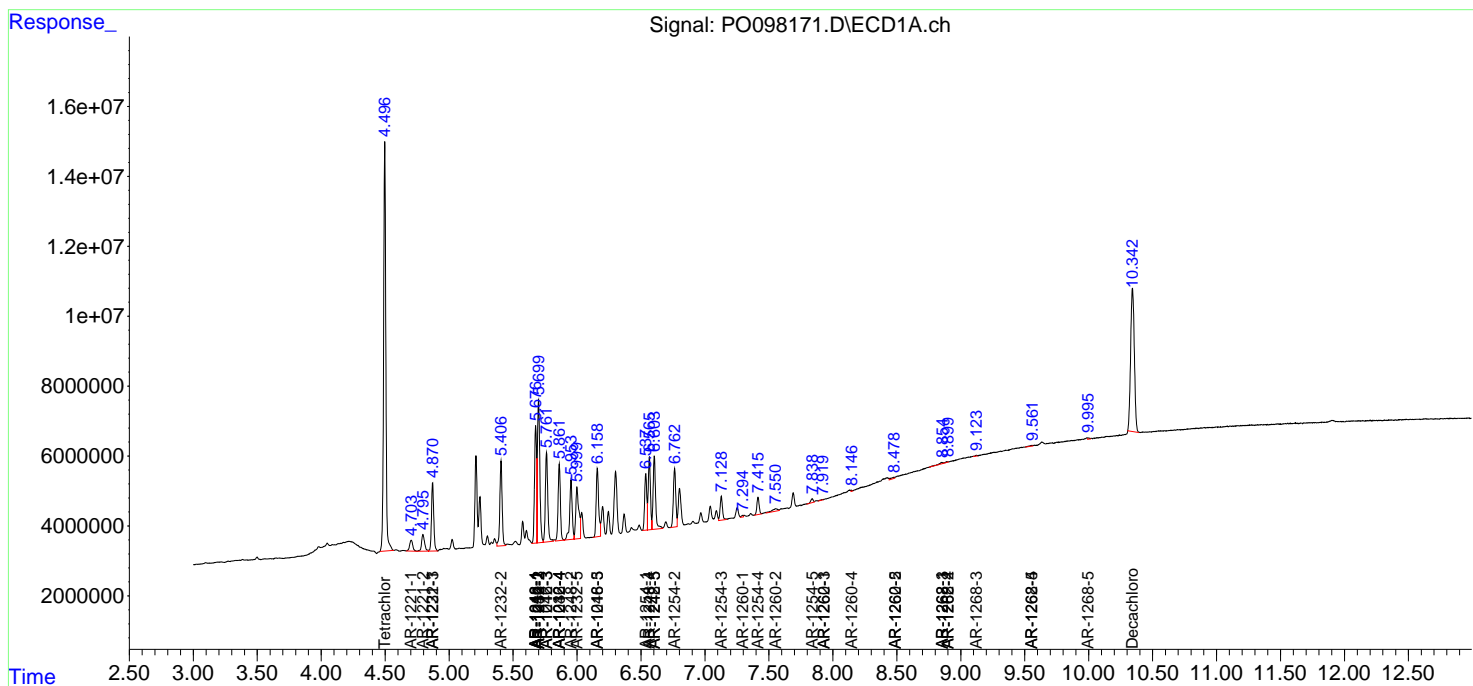
(f)=RT Delta > 1/2 Window (#)=Amounts differ by > 25% (m)=manual int.

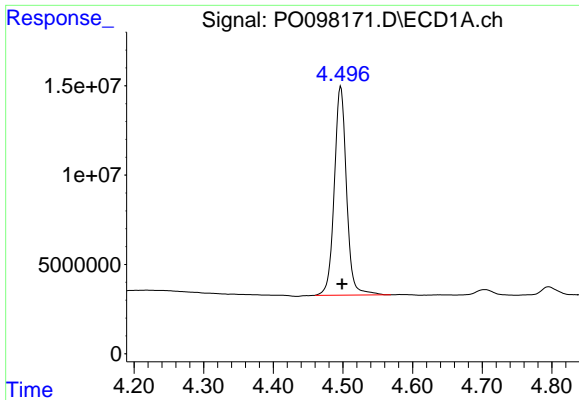
Data Path : Z:\pestpcbsrv\HPCHEM1\ECD\_O\Data\PO092023\  
 Data File : PO098171.D  
 Signal(s) : Signal #1: ECD1A.ch Signal #2: ECD2B.ch  
 Acq On : 20 Sep 2023 11:03  
 Operator : YP/AJ  
 Sample : AR1242CCC500  
 Misc :  
 ALS Vial : 4 Sample Multiplier: 1

Instrument :  
 FID\_C  
 ClientSampleId :

Integration File signal 1: autoint1.e  
 Integration File signal 2: autoint2.e  
 Quant Time: Sep 20 15:38:18 2023  
 Quant Method : Z:\pestpcbsrv\HPCHEM1\ECD\_O\methods\PO091923.M  
 Quant Title : GC EXTRACTABLES  
 QLast Update : Wed Sep 20 07:12:48 2023  
 Response via : Initial Calibration  
 Integrator: ChemStation

Volume Inj. : 2 µl  
 Signal #1 Phase : ZB-MR1 Signal #2 Phase: ZB-MR2  
 Signal #1 Info : 30Mx0.32mmx 0.50µ Signal #2 Info : 30M x 0.32mm x 0.25µm

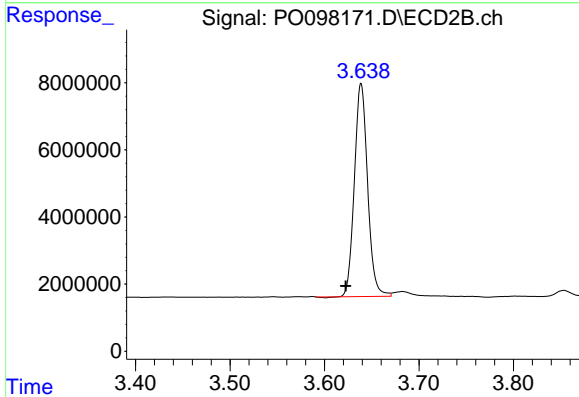




#1 Tetrachloro-m-xylene

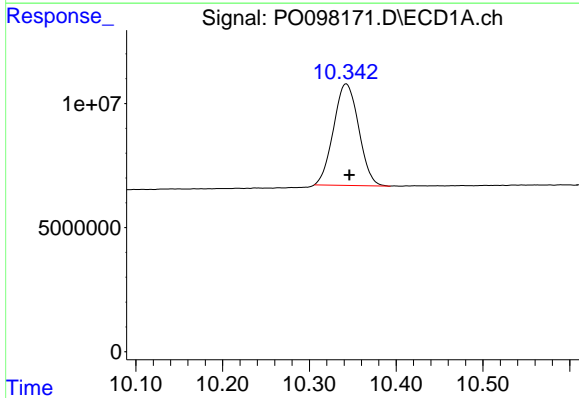
R.T.: 4.497 min  
 Delta R.T.: -0.002 min  
 Response: 142072372  
 Conc: 47.50 ng/ml

Instrument :  
 FID\_C  
 ClientSampleId :



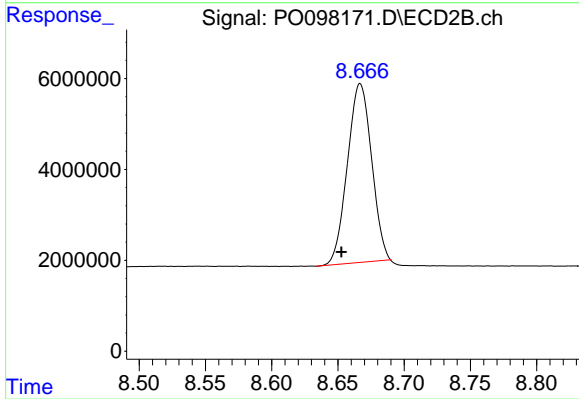
#1 Tetrachloro-m-xylene

R.T.: 3.639 min  
 Delta R.T.: 0.016 min  
 Response: 61781063  
 Conc: 55.65 ng/ml



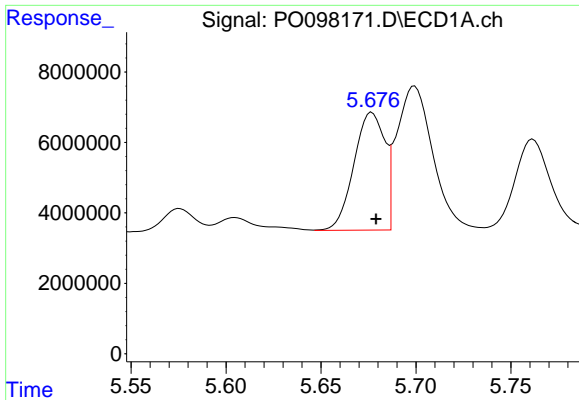
#2 Decachlorobiphenyl

R.T.: 10.343 min  
 Delta R.T.: -0.004 min  
 Response: 82422994  
 Conc: 47.21 ng/ml



#2 Decachlorobiphenyl

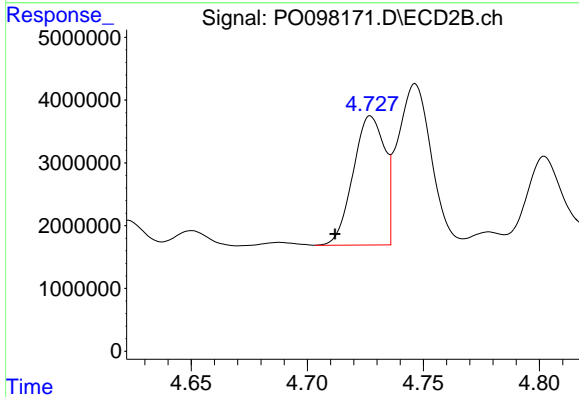
R.T.: 8.667 min  
 Delta R.T.: 0.014 min  
 Response: 50078493  
 Conc: 45.46 ng/ml



#3 AR-1016-1

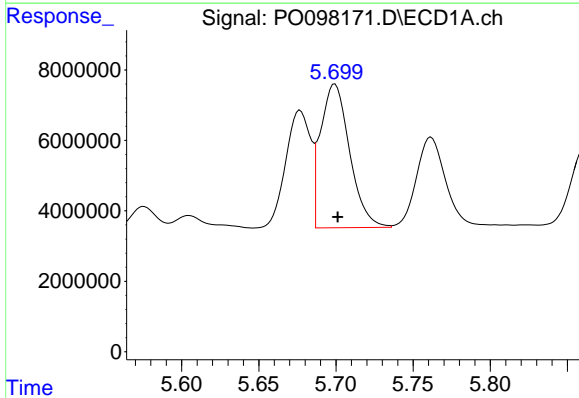
R.T.: 5.677 min  
 Delta R.T.: -0.002 min  
 Response: 37780029  
 Conc: 410.82 ng/ml

Instrument :  
 FID\_C  
 ClientSampleId :



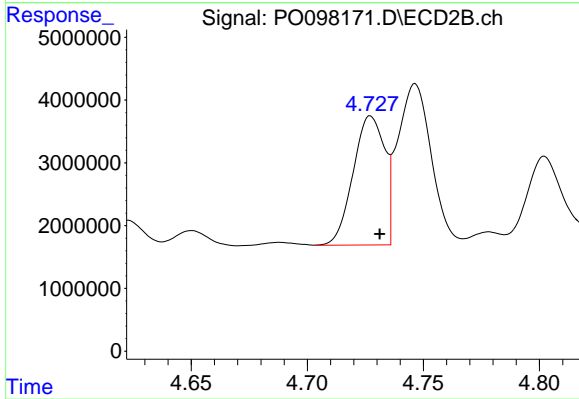
#3 AR-1016-1

R.T.: 4.727 min  
 Delta R.T.: 0.015 min  
 Response: 19405113  
 Conc: 432.95 ng/ml



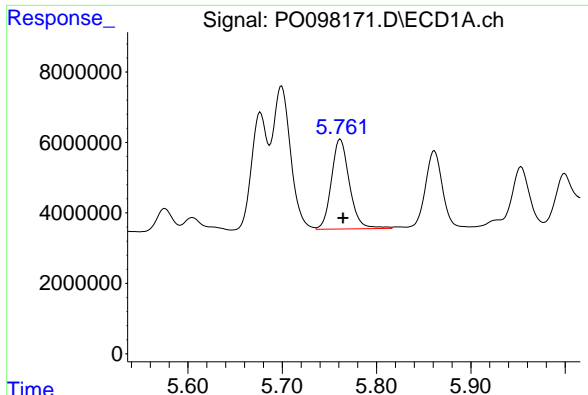
#4 AR-1016-2

R.T.: 5.699 min  
 Delta R.T.: -0.002 min  
 Response: 53734423  
 Conc: 404.84 ng/ml



#4 AR-1016-2

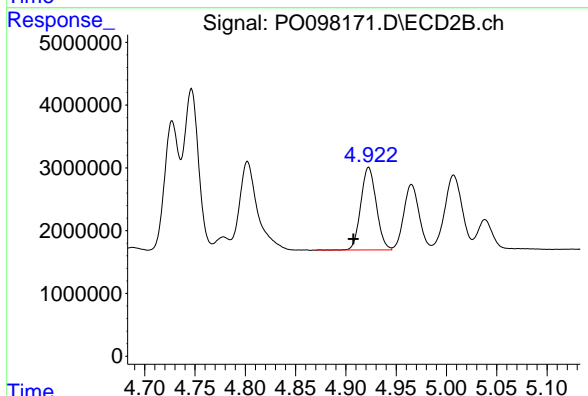
R.T.: 4.727 min  
 Delta R.T.: -0.004 min  
 Response: 19405113  
 Conc: 326.50 ng/ml



#5 AR-1016-3

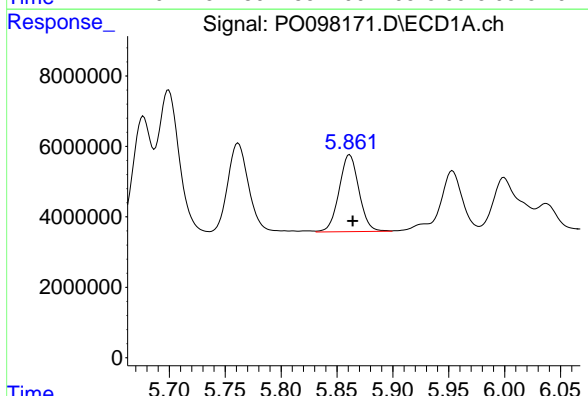
R.T.: 5.762 min  
 Delta R.T.: -0.003 min  
 Response: 33898619  
 Conc: 400.26 ng/ml

Instrument :  
 FID\_C  
 ClientSampleId :



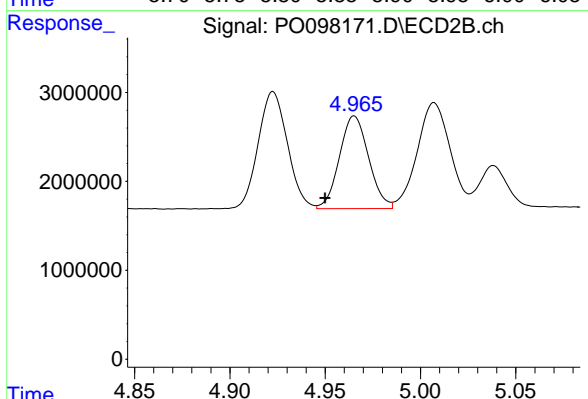
#5 AR-1016-3

R.T.: 4.923 min  
 Delta R.T.: 0.015 min  
 Response: 14100779  
 Conc: 436.21 ng/ml



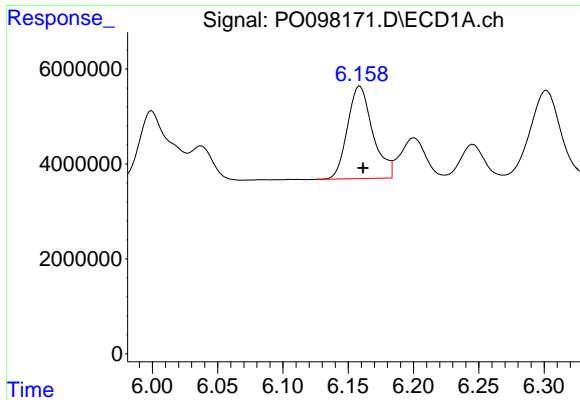
#6 AR-1016-4

R.T.: 5.861 min  
 Delta R.T.: -0.003 min  
 Response: 26996041  
 Conc: 405.98 ng/ml



#6 AR-1016-4

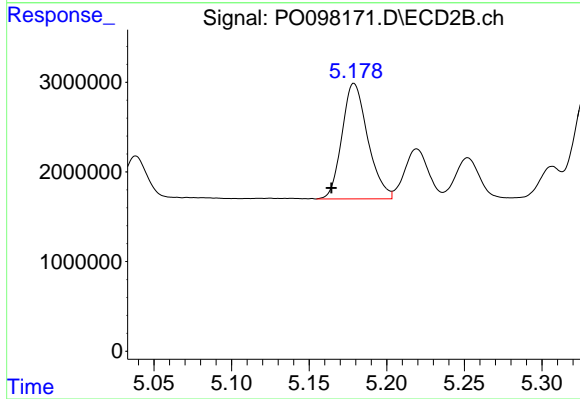
R.T.: 4.965 min  
 Delta R.T.: 0.015 min  
 Response: 11130536  
 Conc: 423.20 ng/ml



#7 AR-1016-5

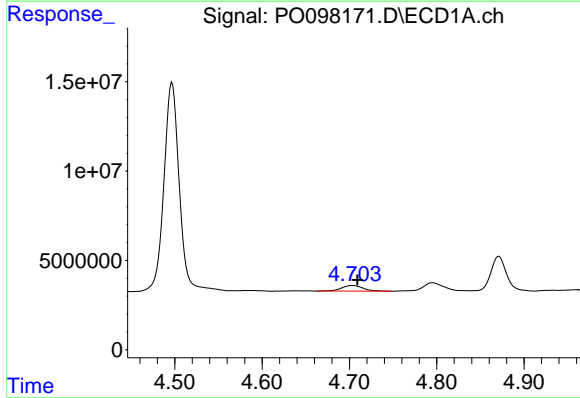
R.T.: 6.159 min  
 Delta R.T.: -0.002 min  
 Response: 26177330  
 Conc: 420.29 ng/ml

Instrument :  
 FID\_C  
 ClientSampleId :



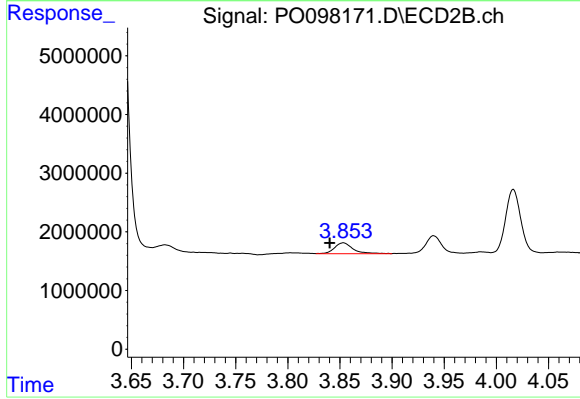
#7 AR-1016-5

R.T.: 5.179 min  
 Delta R.T.: 0.015 min  
 Response: 14908850  
 Conc: 432.33 ng/ml



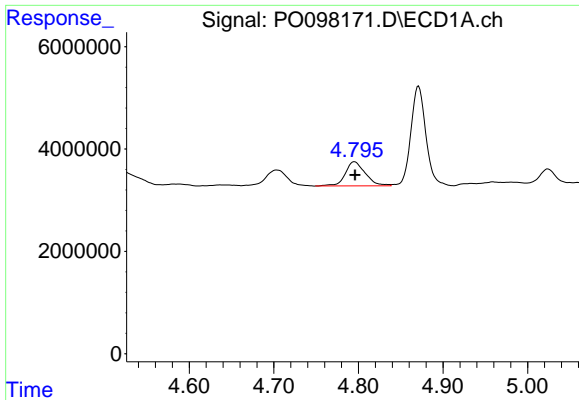
#8 AR-1221-1

R.T.: 4.704 min  
 Delta R.T.: -0.006 min  
 Response: 5384804  
 Conc: 136.26 ng/ml



#8 AR-1221-1

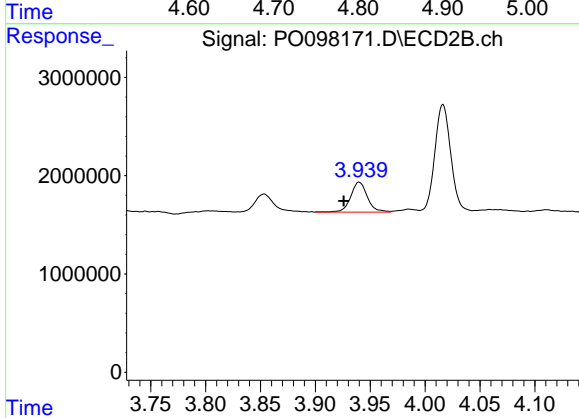
R.T.: 3.853 min  
 Delta R.T.: 0.013 min  
 Response: 2247620  
 Conc: 128.08 ng/ml



#9 AR-1221-2

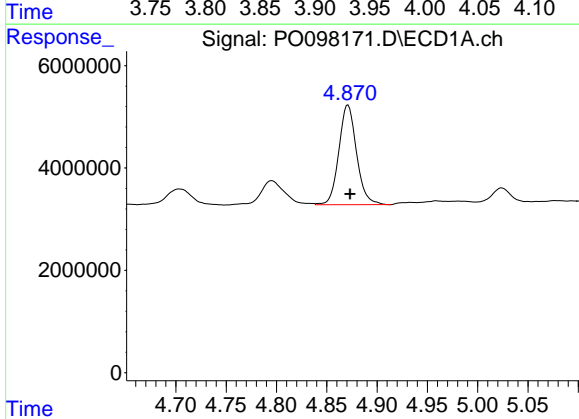
R.T.: 4.795 min  
 Delta R.T.: 0.000 min  
 Response: 7805724  
 Conc: 261.08 ng/ml

Instrument :  
 FID\_C  
 ClientSampleId :



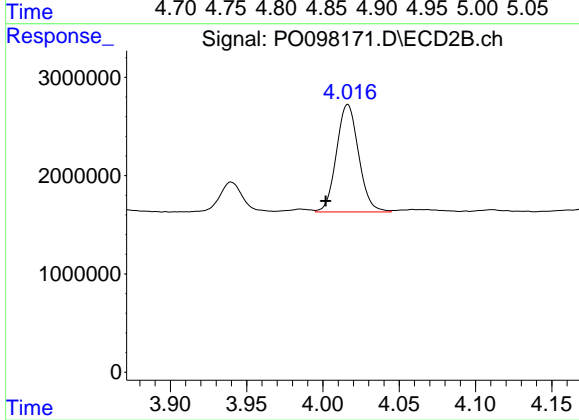
#9 AR-1221-2

R.T.: 3.940 min  
 Delta R.T.: 0.014 min  
 Response: 3226710  
 Conc: 242.40 ng/ml



#10 AR-1221-3

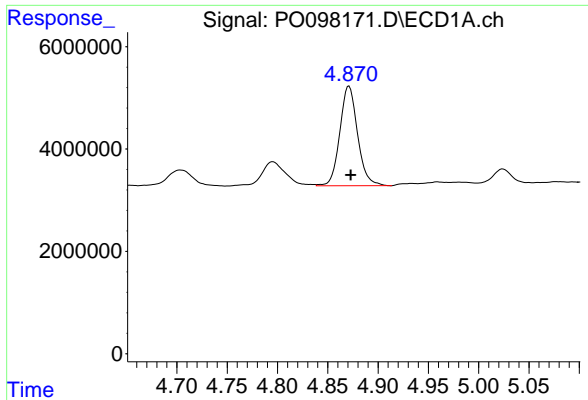
R.T.: 4.871 min  
 Delta R.T.: -0.002 min  
 Response: 23943989  
 Conc: 276.60 ng/ml



#10 AR-1221-3

R.T.: 4.016 min  
 Delta R.T.: 0.014 min  
 Response: 11075628  
 Conc: 293.08 ng/ml

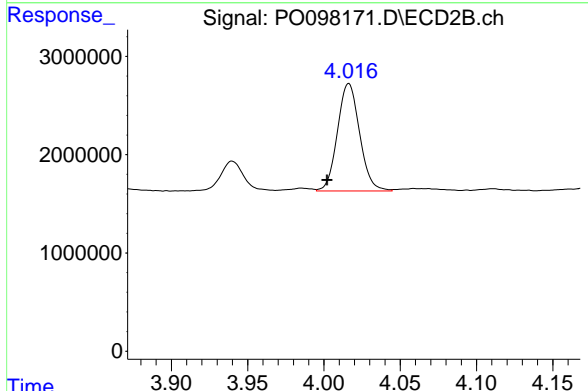




#11 AR-1232-1

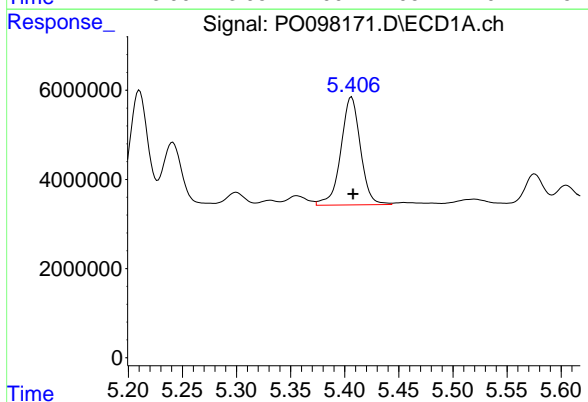
R.T.: 4.871 min  
 Delta R.T.: -0.002 min  
 Response: 23943989  
 Conc: 331.14 ng/ml

Instrument :  
 FID\_C  
 ClientSampleId :



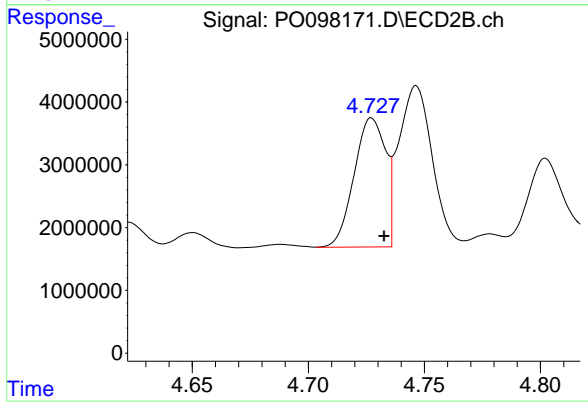
#11 AR-1232-1

R.T.: 4.016 min  
 Delta R.T.: 0.014 min  
 Response: 11075628  
 Conc: 351.37 ng/ml



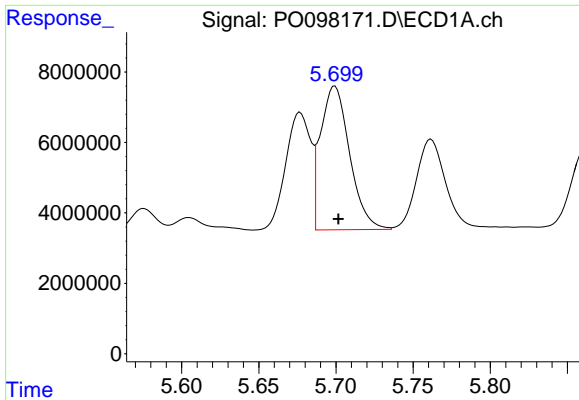
#12 AR-1232-2

R.T.: 5.406 min  
 Delta R.T.: -0.001 min  
 Response: 30550912  
 Conc: 845.43 ng/ml



#12 AR-1232-2

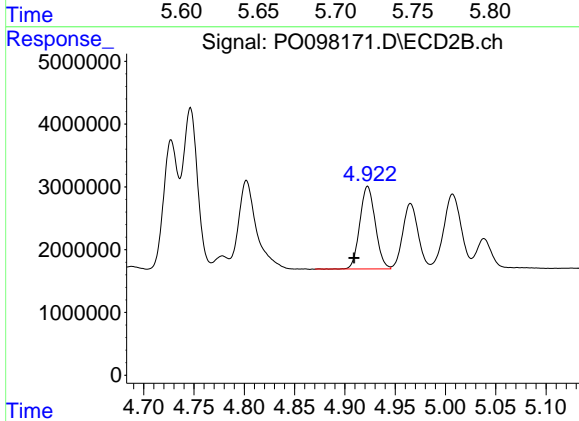
R.T.: 4.727 min  
 Delta R.T.: -0.005 min  
 Response: 19405113  
 Conc: 674.84 ng/ml



#13 AR-1232-3

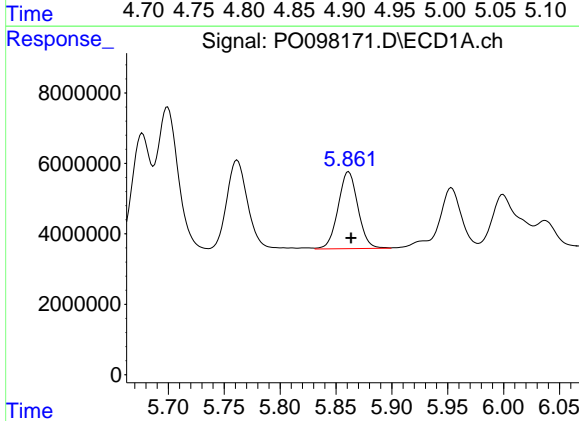
R.T.: 5.699 min  
 Delta R.T.: -0.002 min  
 Response: 53734423  
 Conc: 870.27 ng/ml

Instrument :  
 FID\_C  
 ClientSampleId :



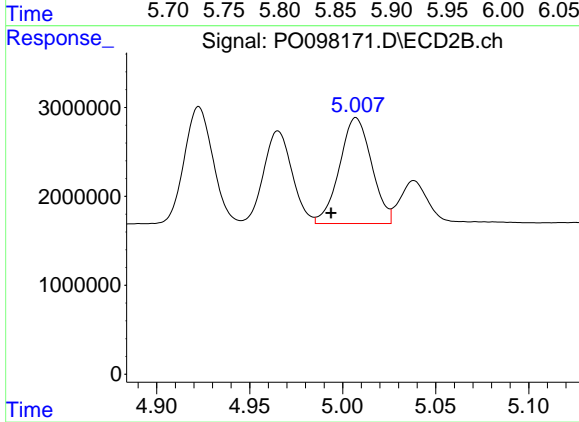
#13 AR-1232-3

R.T.: 4.923 min  
 Delta R.T.: 0.014 min  
 Response: 14100779  
 Conc: 917.18 ng/ml



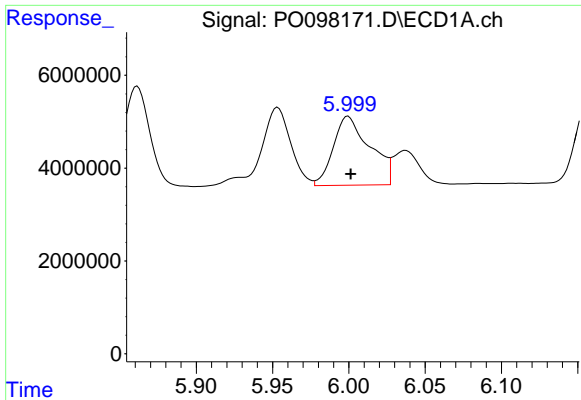
#14 AR-1232-4

R.T.: 5.861 min  
 Delta R.T.: -0.002 min  
 Response: 26996041  
 Conc: 882.28 ng/ml



#14 AR-1232-4

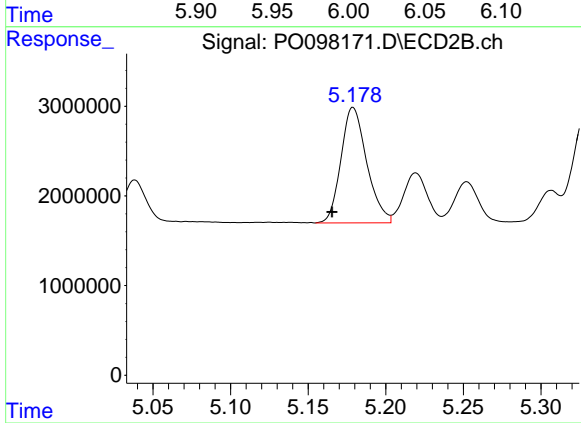
R.T.: 5.007 min  
 Delta R.T.: 0.013 min  
 Response: 14317080  
 Conc: 975.28 ng/ml



#15 AR-1232-5

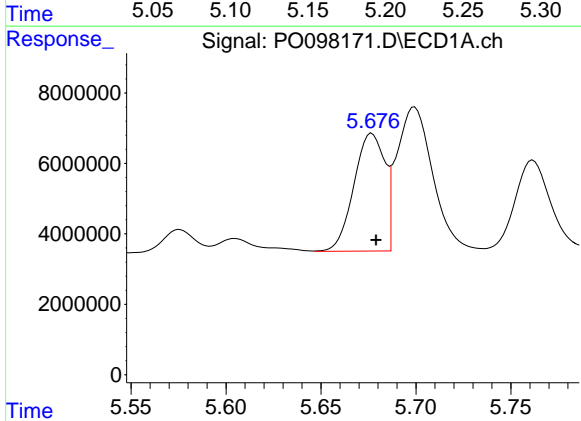
R.T.: 6.000 min  
 Delta R.T.: -0.002 min  
 Response: 24817858  
 Conc: 983.72 ng/ml

Instrument :  
 FID\_C  
 ClientSampleId :



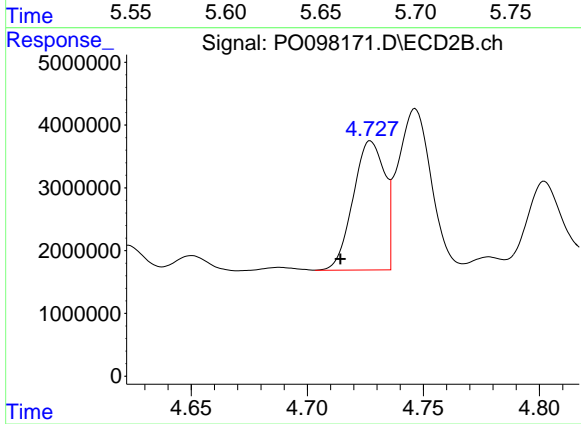
#15 AR-1232-5

R.T.: 5.179 min  
 Delta R.T.: 0.014 min  
 Response: 14908850  
 Conc: 940.29 ng/ml



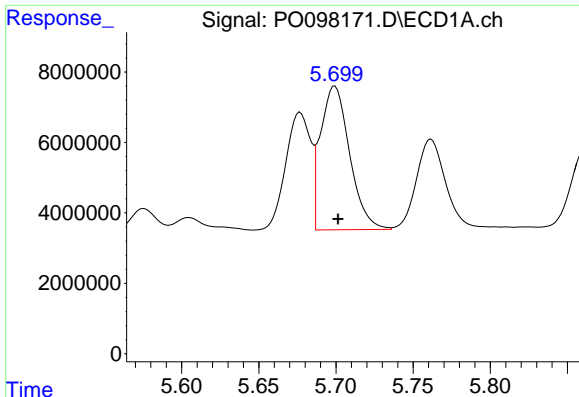
#16 AR-1242-1

R.T.: 5.677 min  
 Delta R.T.: -0.002 min  
 Response: 37780029  
 Conc: 461.54 ng/ml



#16 AR-1242-1

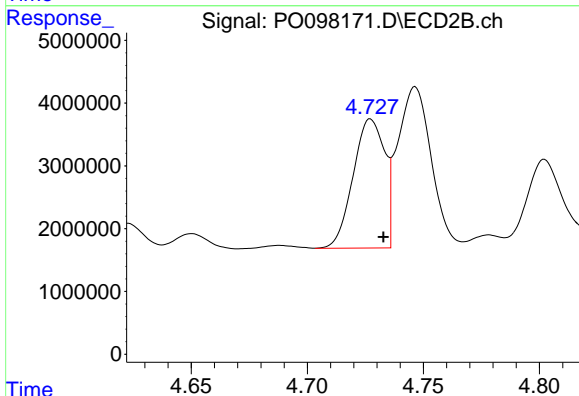
R.T.: 4.727 min  
 Delta R.T.: 0.013 min  
 Response: 19405113  
 Conc: 472.63 ng/ml



#17 AR-1242-2

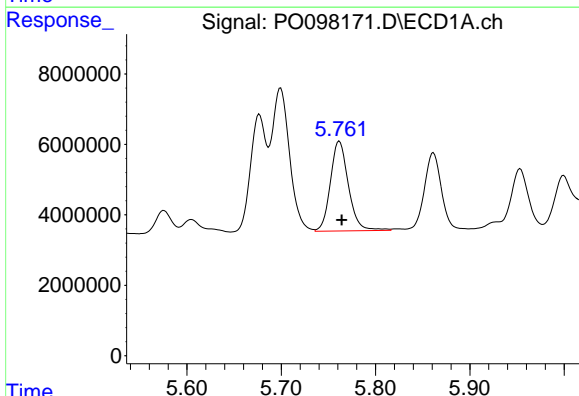
R.T.: 5.699 min  
 Delta R.T.: -0.002 min  
 Response: 53734423  
 Conc: 460.36 ng/ml

Instrument :  
 FID\_C  
 ClientSampleId :



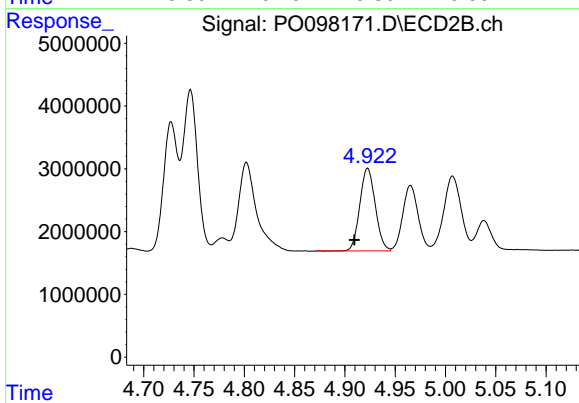
#17 AR-1242-2

R.T.: 4.727 min  
 Delta R.T.: -0.005 min  
 Response: 19405113  
 Conc: 355.20 ng/ml



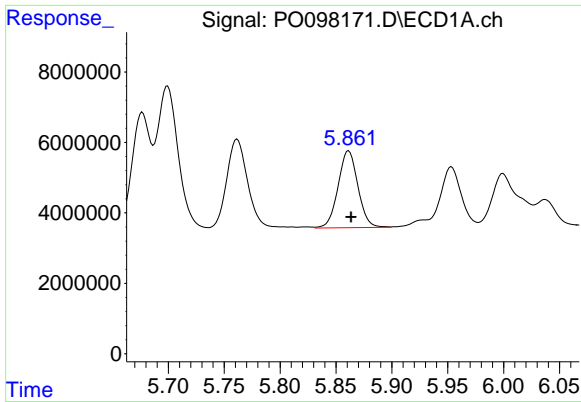
#18 AR-1242-3

R.T.: 5.762 min  
 Delta R.T.: -0.003 min  
 Response: 33898619  
 Conc: 454.67 ng/ml



#18 AR-1242-3

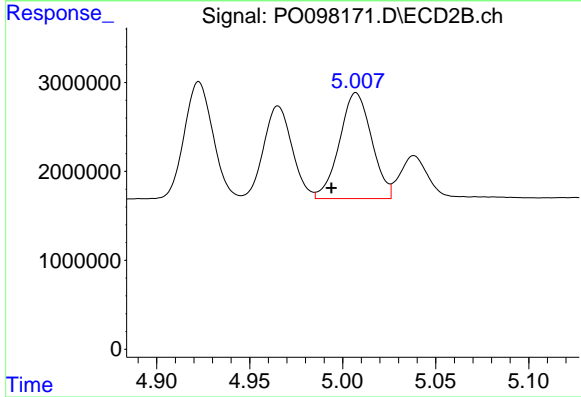
R.T.: 4.923 min  
 Delta R.T.: 0.013 min  
 Response: 14100779  
 Conc: 475.63 ng/ml



#19 AR-1242-4

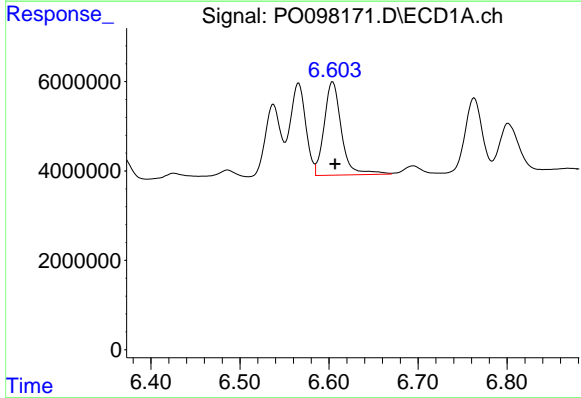
R.T.: 5.861 min  
 Delta R.T.: -0.002 min  
 Response: 26996041  
 Conc: 457.64 ng/ml

Instrument :  
 FID\_C  
 ClientSampleId :



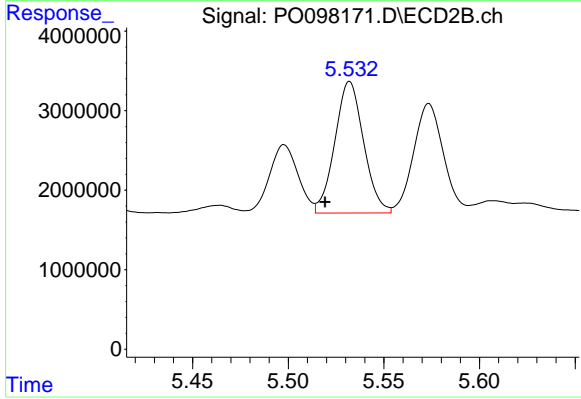
#19 AR-1242-4

R.T.: 5.007 min  
 Delta R.T.: 0.013 min  
 Response: 14317080  
 Conc: 454.04 ng/ml



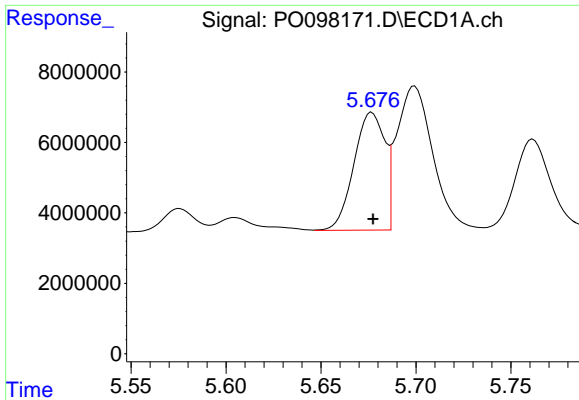
#20 AR-1242-5

R.T.: 6.604 min  
 Delta R.T.: -0.003 min  
 Response: 28304263  
 Conc: 437.95 ng/ml



#20 AR-1242-5

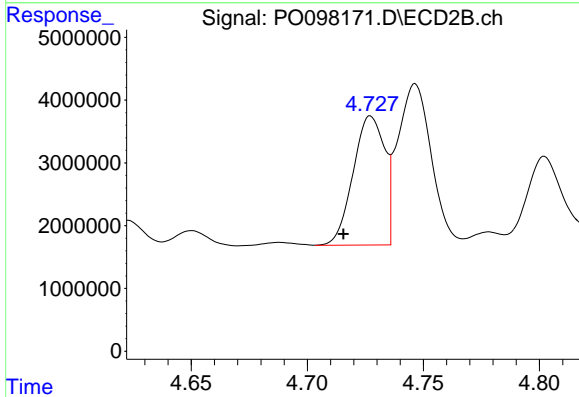
R.T.: 5.532 min  
 Delta R.T.: 0.013 min  
 Response: 17350383  
 Conc: 461.61 ng/ml



#21 AR-1248-1

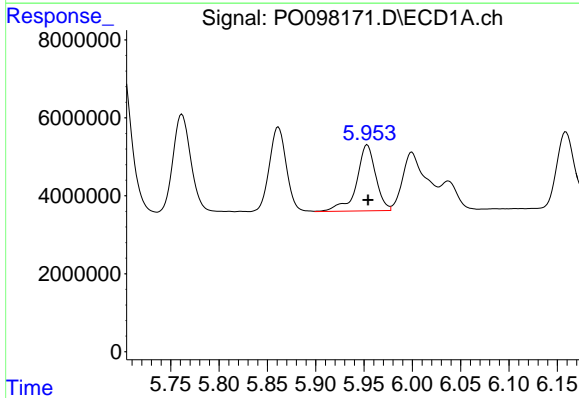
R.T.: 5.677 min  
 Delta R.T.: 0.000 min  
 Response: 37780029  
 Conc: 626.75 ng/ml

Instrument :  
 FID\_C  
 ClientSampleId :



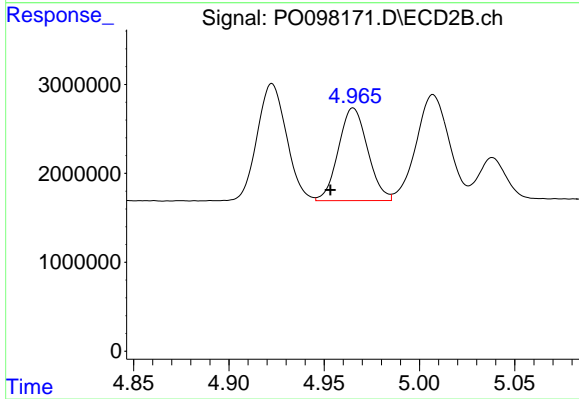
#21 AR-1248-1

R.T.: 4.727 min  
 Delta R.T.: 0.012 min  
 Response: 19405113  
 Conc: 624.38 ng/ml



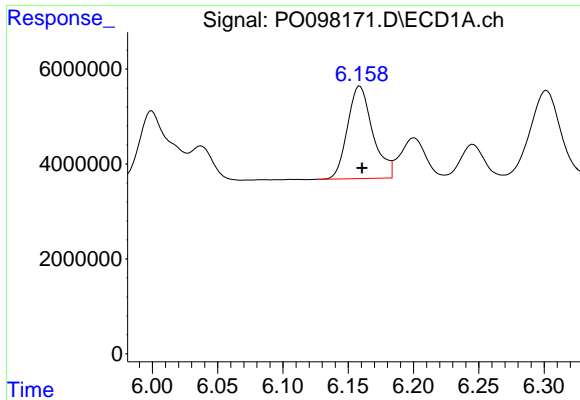
#22 AR-1248-2

R.T.: 5.953 min  
 Delta R.T.: 0.000 min  
 Response: 23368431  
 Conc: 269.56 ng/ml



#22 AR-1248-2

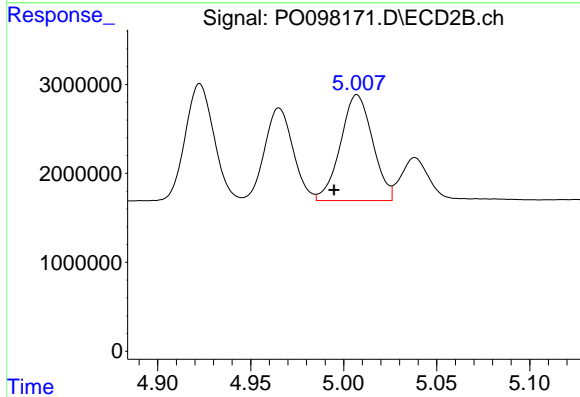
R.T.: 4.965 min  
 Delta R.T.: 0.012 min  
 Response: 11130536  
 Conc: 261.15 ng/ml



#23 AR-1248-3

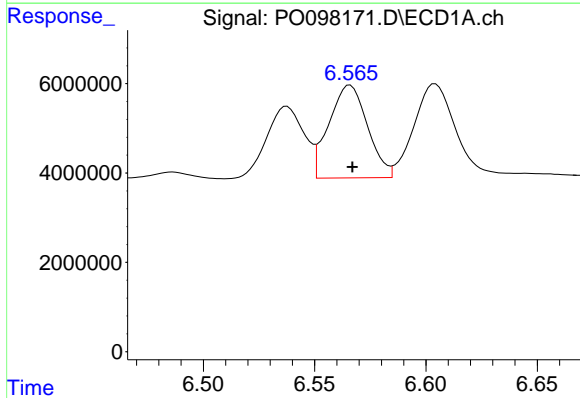
R.T.: 6.159 min  
 Delta R.T.: -0.002 min  
 Response: 26177330  
 Conc: 285.14 ng/ml

Instrument :  
 FID\_C  
 ClientSampleId :



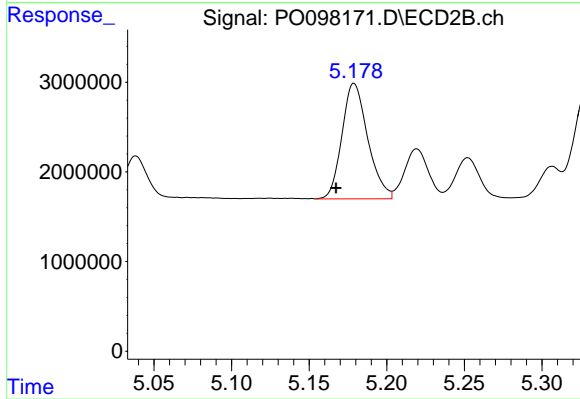
#23 AR-1248-3

R.T.: 5.007 min  
 Delta R.T.: 0.012 min  
 Response: 14317080  
 Conc: 311.99 ng/ml



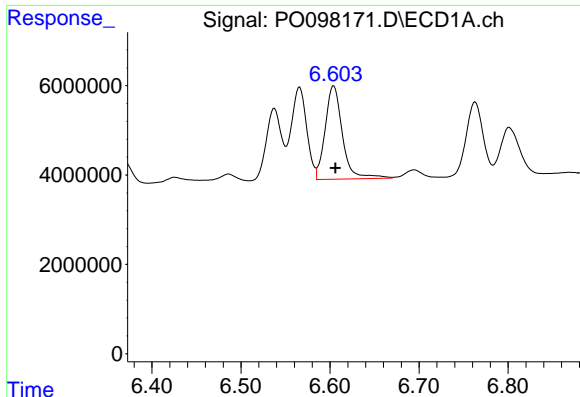
#24 AR-1248-4

R.T.: 6.566 min  
 Delta R.T.: 0.000 min  
 Response: 25097182  
 Conc: 253.68 ng/ml



#24 AR-1248-4

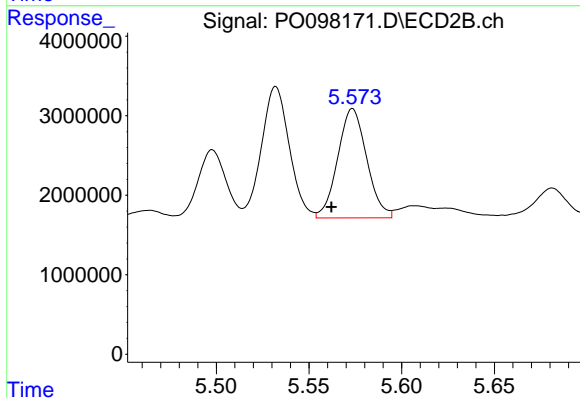
R.T.: 5.179 min  
 Delta R.T.: 0.012 min  
 Response: 14908850  
 Conc: 284.99 ng/ml



#25 AR-1248-5

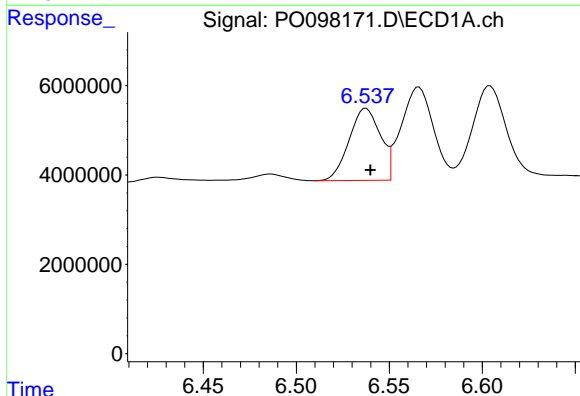
R.T.: 6.604 min  
 Delta R.T.: -0.002 min  
 Response: 28304263  
 Conc: 269.82 ng/ml

Instrument :  
 FID\_C  
 ClientSampleId :



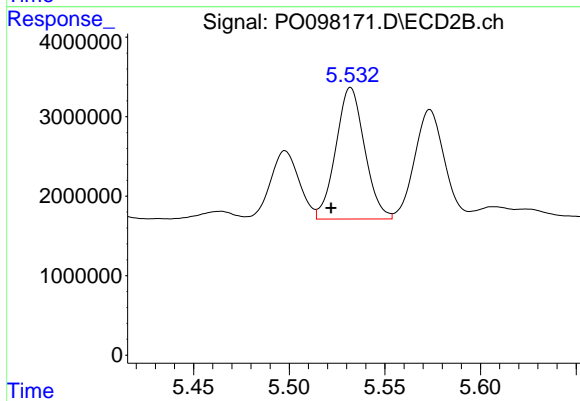
#25 AR-1248-5

R.T.: 5.574 min  
 Delta R.T.: 0.011 min  
 Response: 14966253  
 Conc: 288.73 ng/ml



#26 AR-1254-1

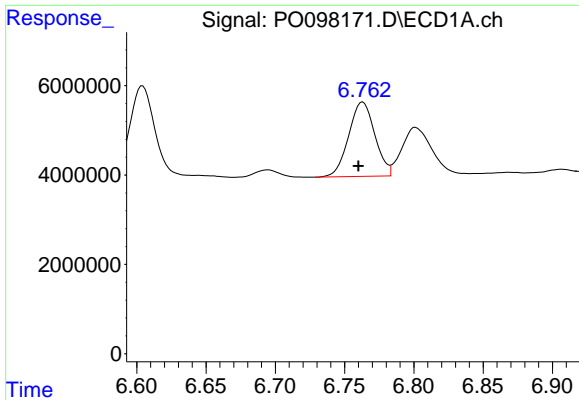
R.T.: 6.538 min  
 Delta R.T.: -0.002 min  
 Response: 18878357  
 Conc: 191.97 ng/ml



#26 AR-1254-1

R.T.: 5.532 min  
 Delta R.T.: 0.010 min  
 Response: 17350383  
 Conc: 230.63 ng/ml

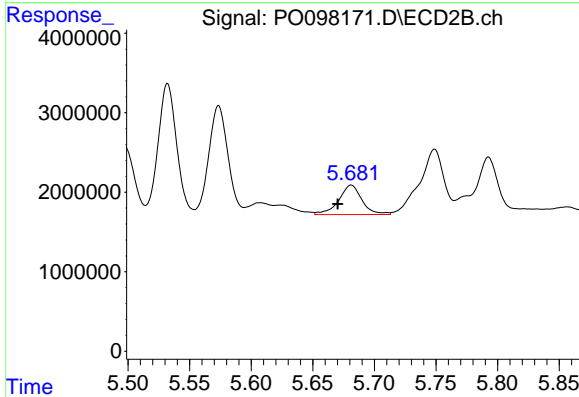




#27 AR-1254-2

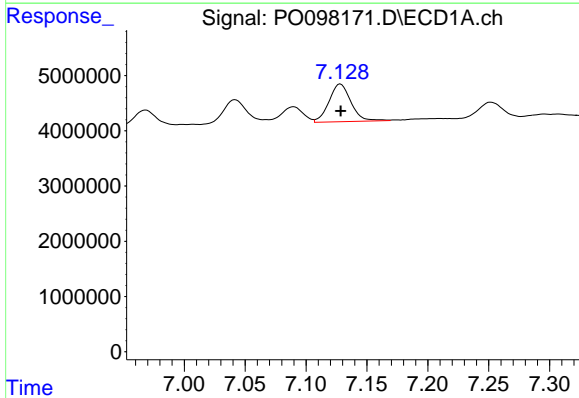
R.T.: 6.763 min  
 Delta R.T.: 0.003 min  
 Response: 21919017  
 Conc: 147.40 ng/ml

Instrument :  
 FID\_C  
 ClientSampleId :



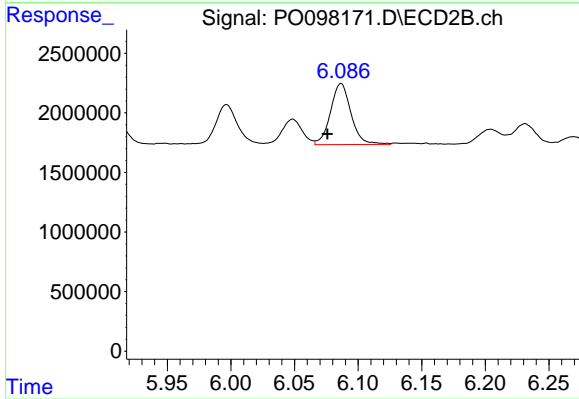
#27 AR-1254-2

R.T.: 5.681 min  
 Delta R.T.: 0.011 min  
 Response: 4884408  
 Conc: 73.03 ng/ml



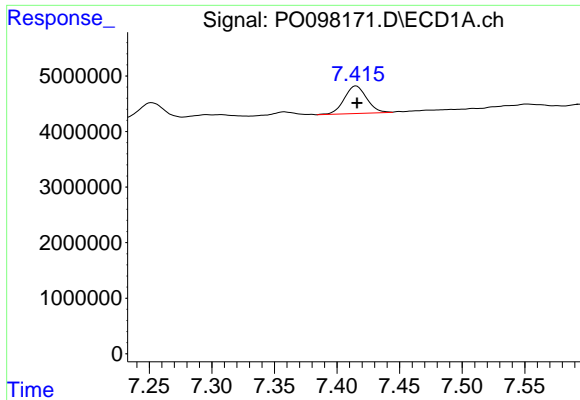
#28 AR-1254-3

R.T.: 7.128 min  
 Delta R.T.: 0.000 min  
 Response: 8550628  
 Conc: 56.62 ng/ml



#28 AR-1254-3

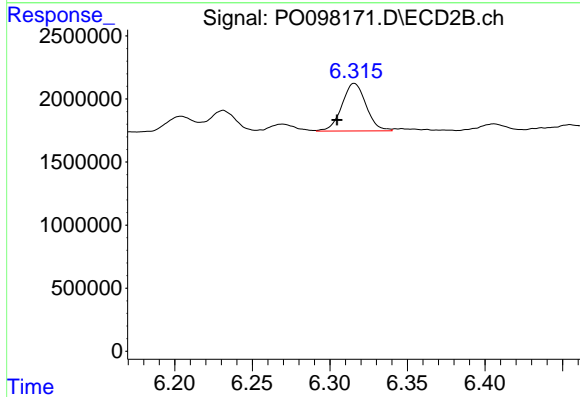
R.T.: 6.087 min  
 Delta R.T.: 0.011 min  
 Response: 5735689  
 Conc: 55.07 ng/ml



#29 AR-1254-4

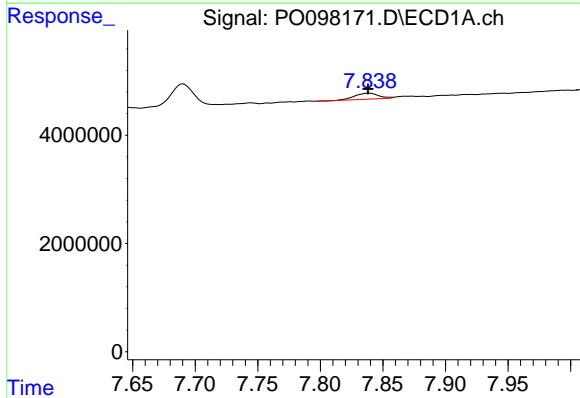
R.T.: 7.415 min  
 Delta R.T.: 0.000 min  
 Response: 6154166  
 Conc: 56.95 ng/ml

Instrument :  
 FID\_C  
 ClientSampleId :



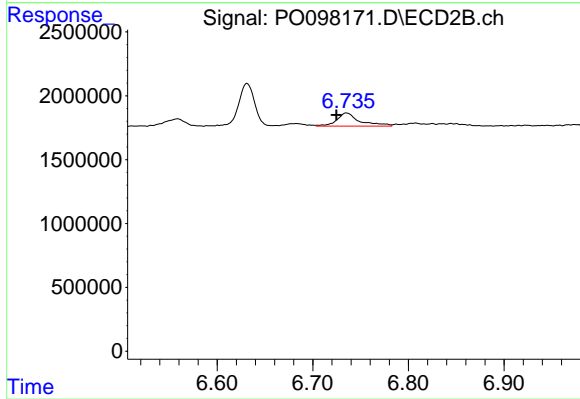
#29 AR-1254-4

R.T.: 6.316 min  
 Delta R.T.: 0.011 min  
 Response: 4112804  
 Conc: 64.15 ng/ml



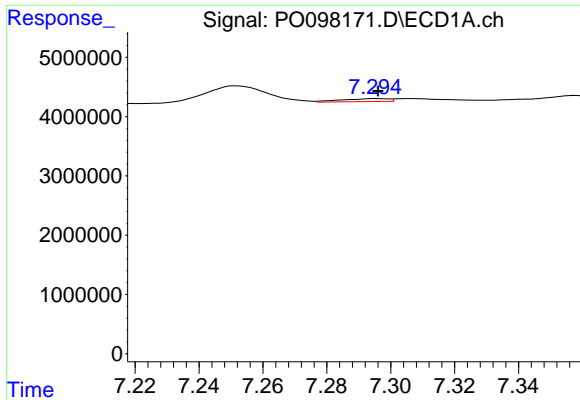
#30 AR-1254-5

R.T.: 7.839 min  
 Delta R.T.: 0.000 min  
 Response: 1512427  
 Conc: 13.47 ng/ml



#30 AR-1254-5

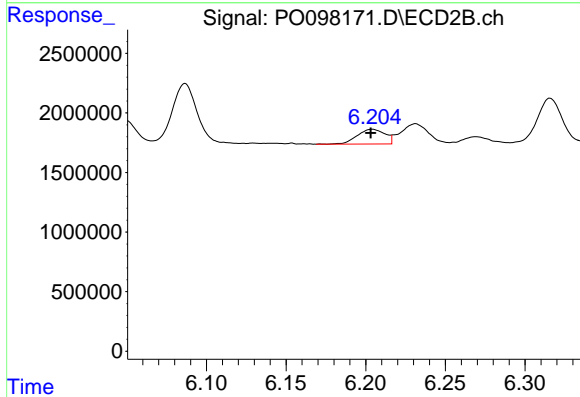
R.T.: 6.735 min  
 Delta R.T.: 0.011 min  
 Response: 1729104  
 Conc: 19.08 ng/ml



#31 AR-1260-1

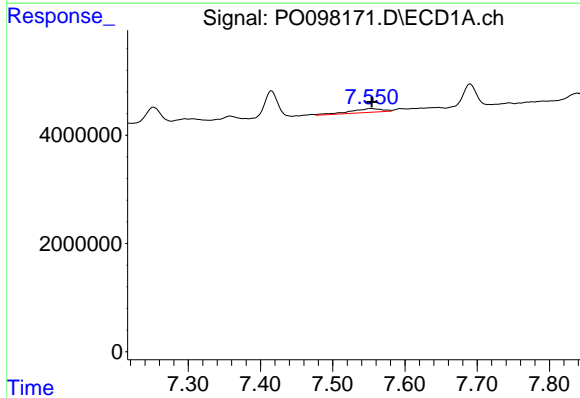
R.T.: 7.296 min  
 Delta R.T.: 0.000 min  
 Response: 502532  
 Conc: 4.47 ng/ml

Instrument :  
 FID\_C  
 ClientSampleId :



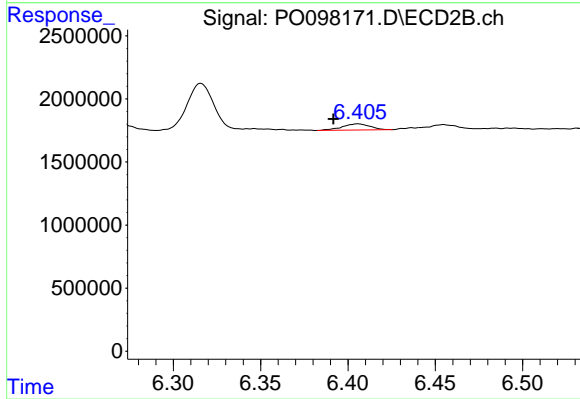
#31 AR-1260-1

R.T.: 6.204 min  
 Delta R.T.: 0.000 min  
 Response: 1495630  
 Conc: 21.59 ng/ml



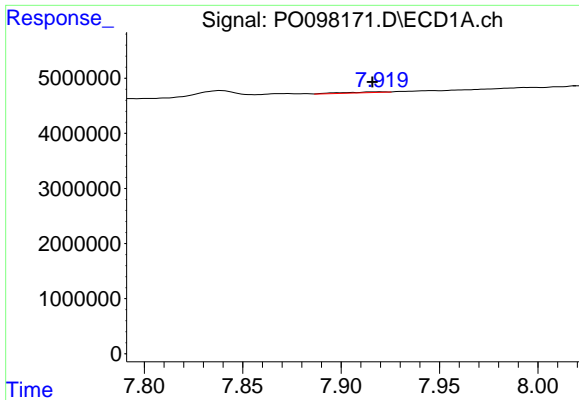
#32 AR-1260-2

R.T.: 7.552 min  
 Delta R.T.: -0.002 min  
 Response: 2197775  
 Conc: 16.80 ng/ml



#32 AR-1260-2

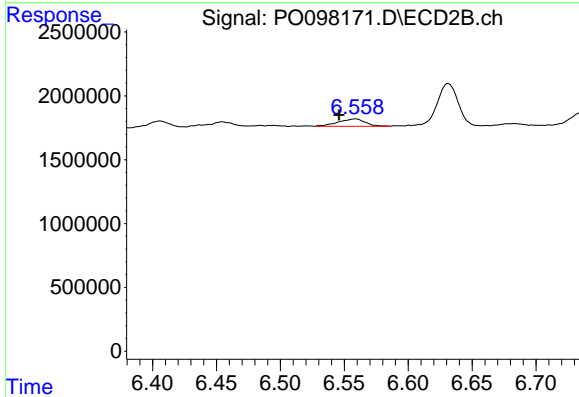
R.T.: 6.406 min  
 Delta R.T.: 0.014 min  
 Response: 560936  
 Conc: 6.85 ng/ml



#33 AR-1260-3

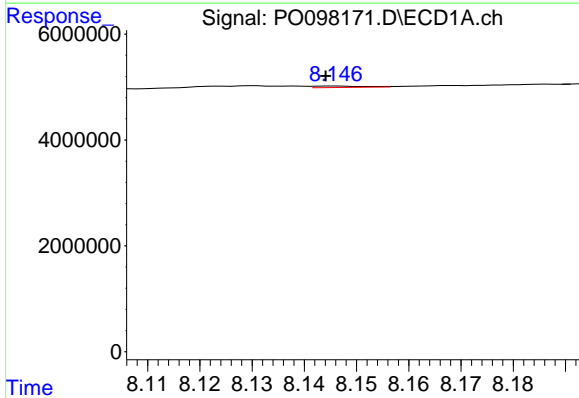
R.T.: 7.920 min  
 Delta R.T.: 0.004 min  
 Response: 210352  
 Conc: 2.18 ng/ml

Instrument :  
 FID\_C  
 ClientSampleId :



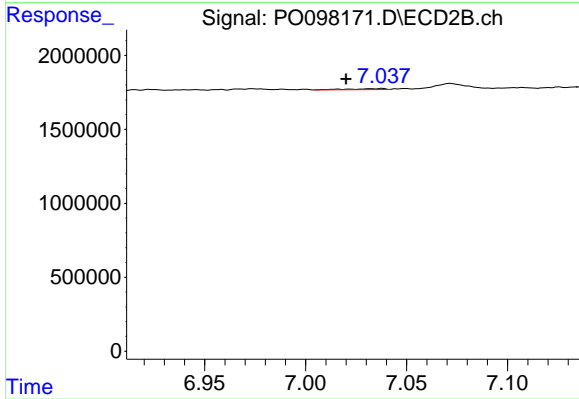
#33 AR-1260-3

R.T.: 6.559 min  
 Delta R.T.: 0.013 min  
 Response: 857464  
 Conc: 11.07 ng/ml



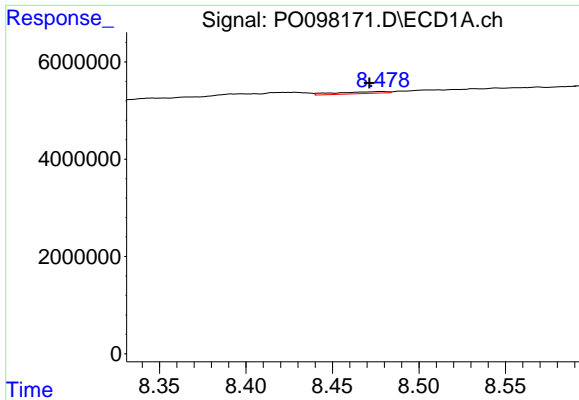
#34 AR-1260-4

R.T.: 8.146 min  
 Delta R.T.: 0.002 min  
 Response: 181487  
 Conc: 1.65 ng/ml



#34 AR-1260-4

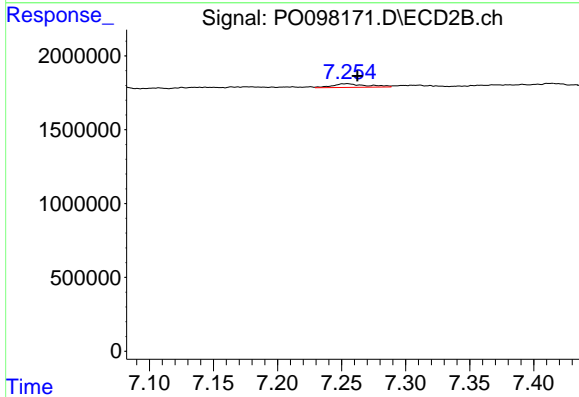
R.T.: 7.038 min  
 Delta R.T.: 0.018 min  
 Response: 80812  
 Conc: 1.30 ng/ml



#35 AR-1260-5

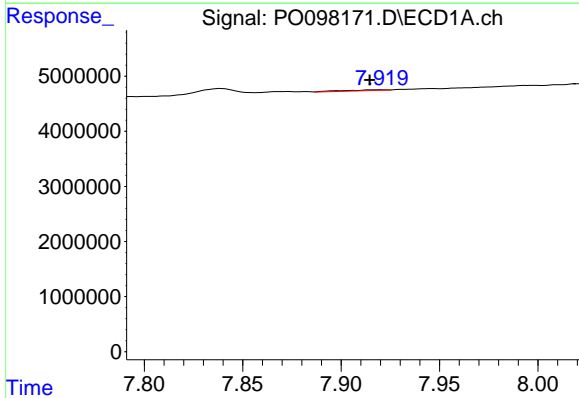
R.T.: 8.478 min  
 Delta R.T.: 0.007 min  
 Response: 800759  
 Conc: 3.90 ng/ml

Instrument :  
 FID\_C  
 ClientSampleId :



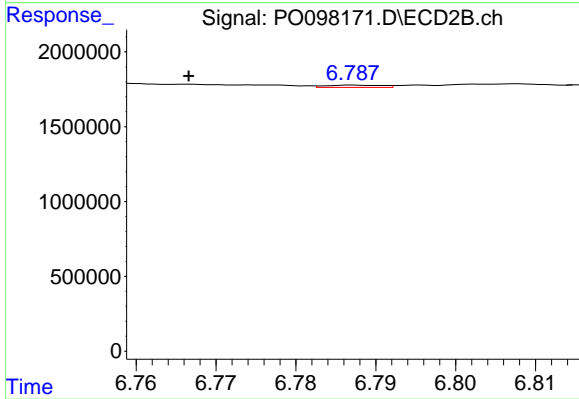
#35 AR-1260-5

R.T.: 7.254 min  
 Delta R.T.: -0.008 min  
 Response: 457632  
 Conc: 3.23 ng/ml



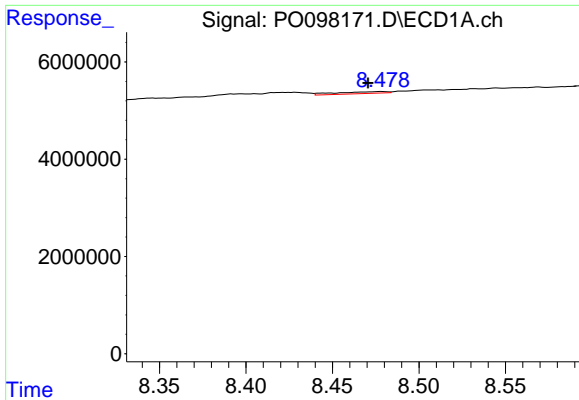
#36 AR-1262-1

R.T.: 7.920 min  
 Delta R.T.: 0.006 min  
 Response: 210352  
 Conc: 1.47 ng/ml



#36 AR-1262-1

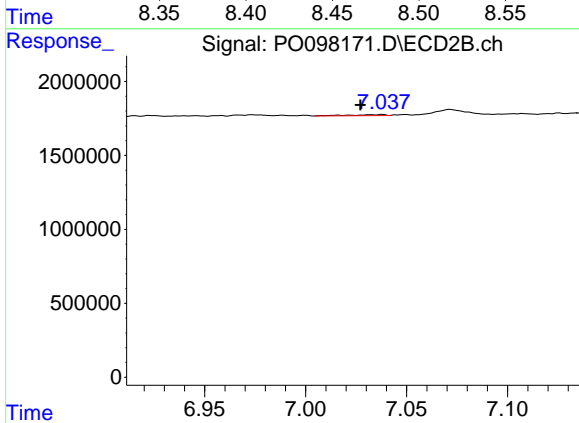
R.T.: 6.787 min  
 Delta R.T.: 0.021 min  
 Response: 73482  
 Conc: 0.80 ng/ml



#37 AR-1262-2

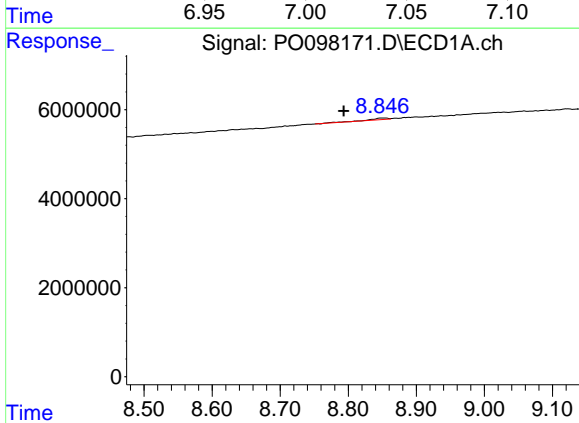
R.T.: 8.478 min  
 Delta R.T.: 0.008 min  
 Response: 800759  
 Conc: 3.25 ng/ml

Instrument :  
 FID\_C  
 ClientSampleId :



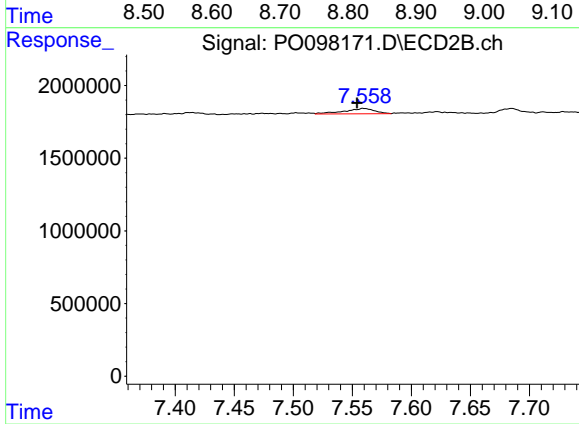
#37 AR-1262-2

R.T.: 7.038 min  
 Delta R.T.: 0.010 min  
 Response: 80812  
 Conc: 0.99 ng/ml



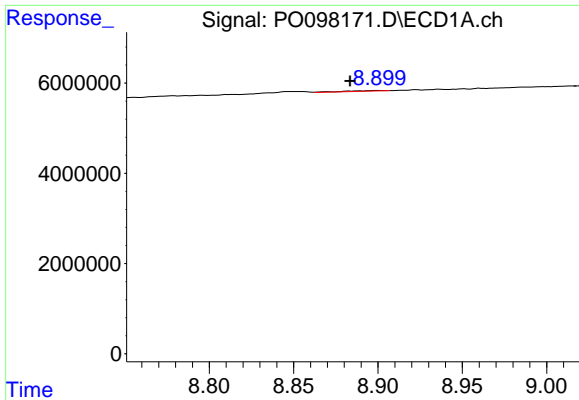
#38 AR-1262-3

R.T.: 8.854 min  
 Delta R.T.: 0.061 min  
 Response: 719923  
 Conc: 4.36 ng/ml



#38 AR-1262-3

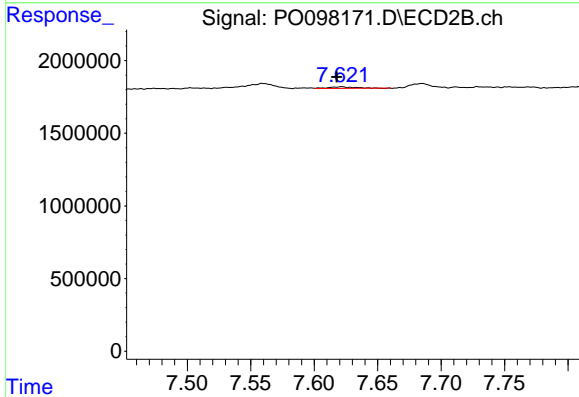
R.T.: 7.560 min  
 Delta R.T.: 0.006 min  
 Response: 656470  
 Conc: 10.33 ng/ml



#39 AR-1262-4

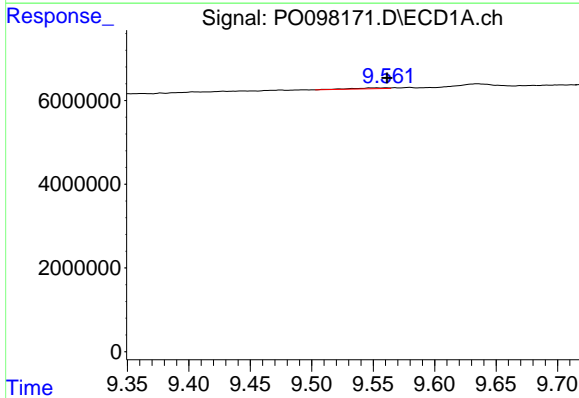
R.T.: 8.900 min  
 Delta R.T.: 0.017 min  
 Response: 239182  
 Conc: 3.16 ng/ml

Instrument :  
 FID\_C  
 ClientSampleId :



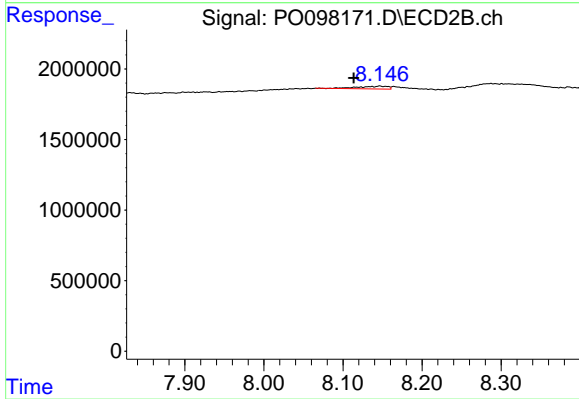
#39 AR-1262-4

R.T.: 7.622 min  
 Delta R.T.: 0.004 min  
 Response: 147515  
 Conc: 1.27 ng/ml



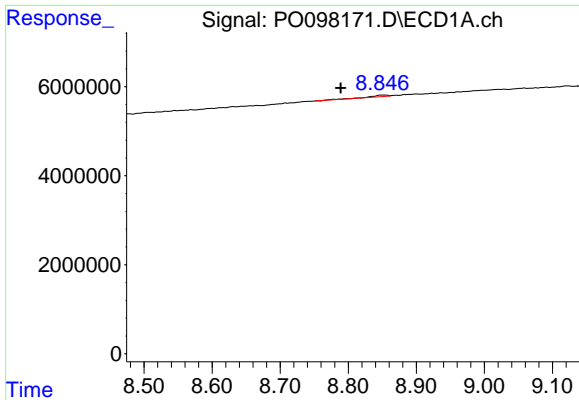
#40 AR-1262-5

R.T.: 9.553 min  
 Delta R.T.: -0.008 min  
 Response: 438016  
 Conc: 5.08 ng/ml



#40 AR-1262-5

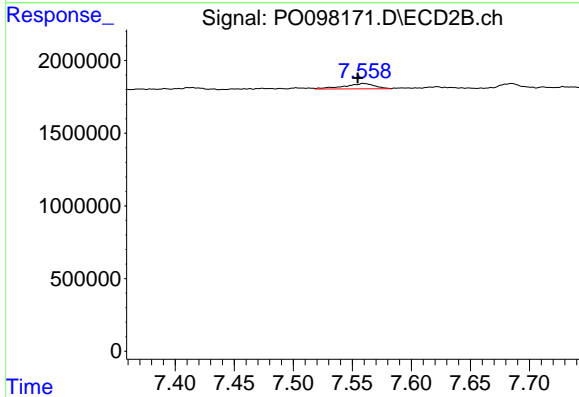
R.T.: 8.147 min  
 Delta R.T.: 0.033 min  
 Response: 528512  
 Conc: 9.73 ng/ml



#41 AR-1268-1

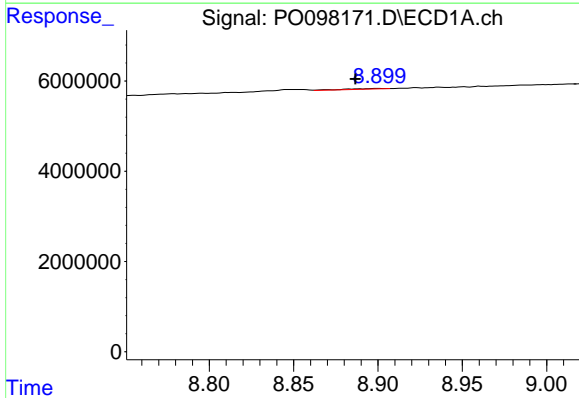
R.T.: 8.854 min  
 Delta R.T.: 0.065 min  
 Response: 719923  
 Conc: 2.58 ng/ml

Instrument :  
 FID\_C  
 ClientSampleId :



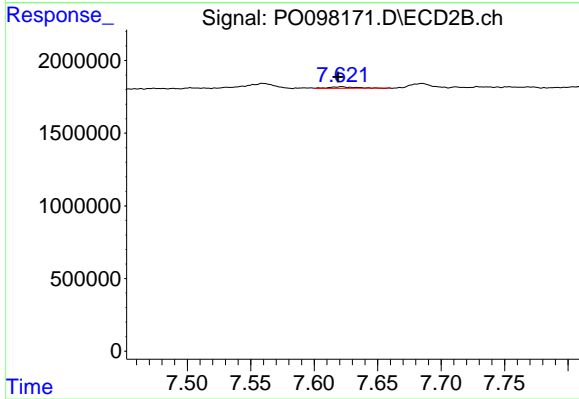
#41 AR-1268-1

R.T.: 7.560 min  
 Delta R.T.: 0.005 min  
 Response: 656470  
 Conc: 3.54 ng/ml



#42 AR-1268-2

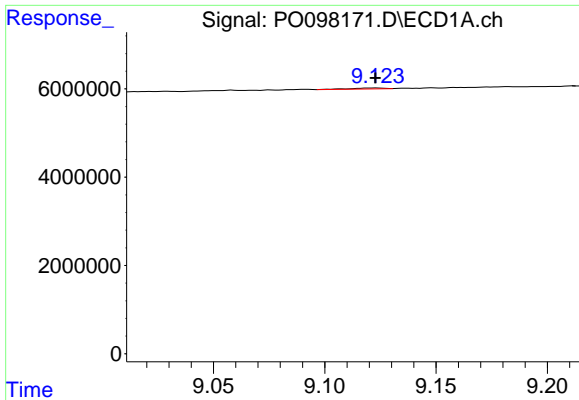
R.T.: 8.900 min  
 Delta R.T.: 0.013 min  
 Response: 239182  
 Conc: 0.96 ng/ml



#42 AR-1268-2

R.T.: 7.622 min  
 Delta R.T.: 0.003 min  
 Response: 147515  
 Conc: 0.91 ng/ml

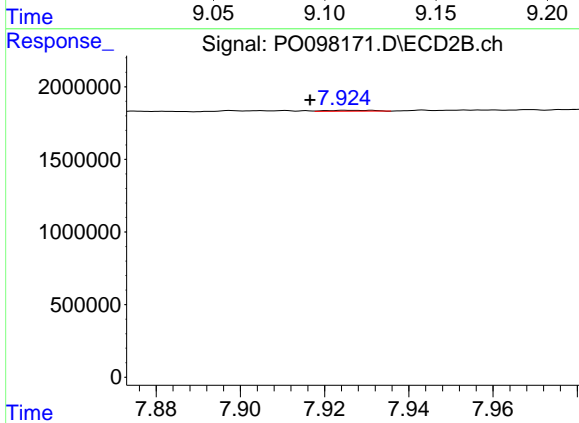




#43 AR-1268-3

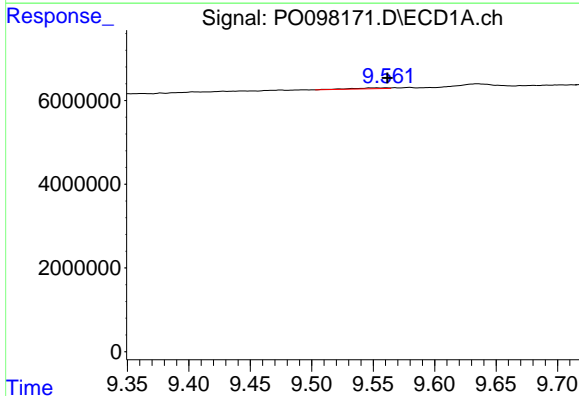
R.T.: 9.123 min  
 Delta R.T.: 0.000 min  
 Response: 234485  
 Conc: 1.09 ng/ml

Instrument : FID\_C  
 ClientSampleId :



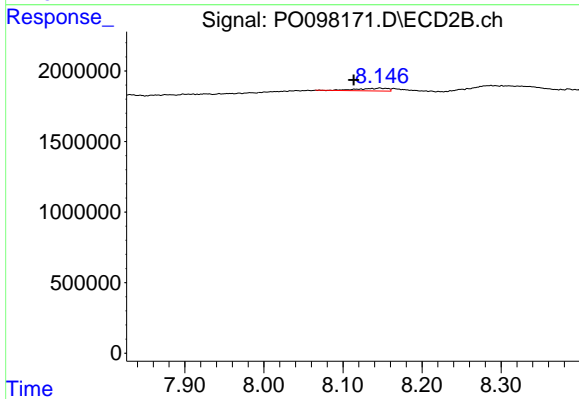
#43 AR-1268-3

R.T.: 7.926 min  
 Delta R.T.: 0.009 min  
 Response: 49964  
 Conc: 1.48 ng/ml



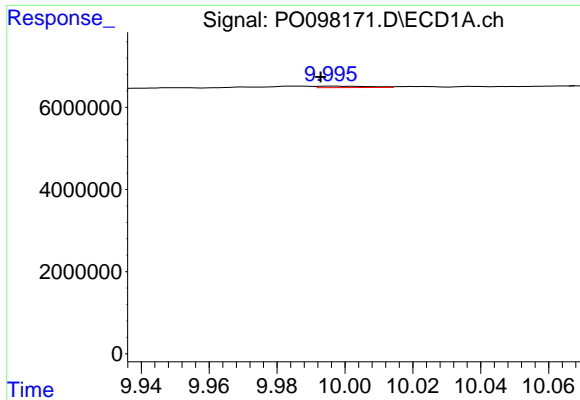
#44 AR-1268-4

R.T.: 9.553 min  
 Delta R.T.: -0.008 min  
 Response: 438016  
 Conc: 4.81 ng/ml



#44 AR-1268-4

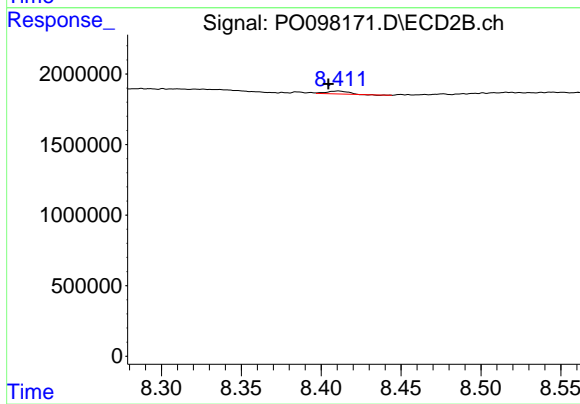
R.T.: 8.147 min  
 Delta R.T.: 0.033 min  
 Response: 528512  
 Conc: 8.84 ng/ml



#45 AR-1268-5

R.T.: 9.996 min  
 Delta R.T.: 0.003 min  
 Response: 351638  
 Conc: 0.49 ng/ml

Instrument : FID\_C  
 ClientSampleId :



#45 AR-1268-5

R.T.: 8.411 min  
 Delta R.T.: 0.006 min  
 Response: 186552  
 Conc: 0.44 ng/ml