

Data Path : Z:\pestpcbsrv\HPCHEM1\ECD_P\Data\PP091923\
 Data File : PP060007.D
 Signal(s) : Signal #1: ECD1A.ch Signal #2: ECD2B.ch
 Acq On : 20 Sep 2023 08:54
 Operator : YP\AJ
 Sample : 04486-05 10X
 Misc :
 ALS Vial : 52 Sample Multiplier: 1

Instrument :
 FID_C
 ClientSampleId :

Integration File signal 1: autoint1.e
 Integration File signal 2: autoint2.e
 Quant Time: Sep 20 11:15:41 2023
 Quant Method : Z:\pestpcbsrv\HPCHEM1\ECD_P\methods\PP091823.M
 Quant Title : GC EXTRACTABLES
 QLast Update : Tue Sep 19 09:22:53 2023
 Response via : Initial Calibration
 Integrator: ChemStation

Volume Inj. : 2 µl
 Signal #1 Phase : ZB-MR1 Signal #2 Phase: ZB-MR2
 Signal #1 Info : 30Mx0.32mmx 0.50µ Signal #2 Info : 30M x 0.32mm x 0.25µm

Compound	RT#1	RT#2	Resp#1	Resp#2	ng/ml	ng/ml

System Monitoring Compounds						
1) SA Tetrachlo...	4.508	3.666	3816360	2682734	1.835	1.647
2) SA Decachlor...	10.428	8.743	4551521	3446470	2.984	2.276
Target Compounds						
3) L1 AR-1016-1	0.000	4.784	0	30152	N.D.	0.502 #
4) L1 AR-1016-2	0.000	4.784	0	30152	N.D.	0.363 #
5) L1 AR-1016-3	0.000	4.953f	0	98067	N.D.	2.186 #
6) L1 AR-1016-4	0.000	5.016	0	40252	N.D.	1.141 #
7) L1 AR-1016-5	0.000	5.223	0	43598	N.D.	0.938 #
8) L2 AR-1221-1	0.000	3.900	0	249540	N.D.	11.361 #
9) L2 AR-1221-2	4.819	3.979	764383	544720	38.835	35.282
10) L2 AR-1221-3	0.000	4.047	0	112026	N.D.	2.388 #
11) L3 AR-1232-1	0.000	4.047	0	112026	N.D.	2.947 #
12) L3 AR-1232-2	5.411	4.784	433586	30152	17.071	0.818 #
13) L3 AR-1232-3	0.000	4.953f	0	98067	N.D.	4.898 #
14) L3 AR-1232-4	0.000	5.040f	0	25754	N.D.	1.410 #
15) L3 AR-1232-5	0.000	5.223	0	43598	N.D.	2.175 #
16) L4 AR-1242-1	0.000	4.784	0	30152	N.D.	0.573 #
17) L4 AR-1242-2	0.000	4.784	0	30152	N.D.	0.418 #
18) L4 AR-1242-3	0.000	4.953f	0	98067	N.D.	2.506 #
19) L4 AR-1242-4	0.000	5.040f	0	25754	N.D.	0.657 #
20) L4 AR-1242-5	0.000	5.576	0	315137	N.D.	6.514 #
21) L5 AR-1248-1	0.000	4.784	0	30152	N.D.	0.772 #
22) L5 AR-1248-2	0.000	5.016	0	40252	N.D.	0.743 #
23) L5 AR-1248-3	0.000	5.040	0	25754	N.D.	0.453 #
24) L5 AR-1248-4	0.000	5.223	0	43598	N.D.	0.649 #
26) L6 AR-1254-1	0.000	5.576	0	315137	N.D.	3.140 #
27) L6 AR-1254-2	6.782	5.730	216414	153683	1.807	1.769
28) L6 AR-1254-3	7.155	6.136	781382	286971	6.432	2.044 #
29) L6 AR-1254-4	7.446	6.363	550151	240471	6.186	2.857 #
30) L6 AR-1254-5	7.869	6.789	465030	273953	4.781	2.310 #
31) L7 AR-1260-1	7.326	6.271	203070	783354	2.253	8.413 #
32) L7 AR-1260-2	7.584	6.455	585806	113111	5.710	1.032 #
33) L7 AR-1260-3	7.939	6.610	704879	27654	8.950	0.269 #
34) L7 AR-1260-4	8.168	7.089	201420	22839	2.247	0.274 #
35) L7 AR-1260-5	0.000	7.338	0	153380	N.D.	0.797 #
36) L8 AR-1262-1	7.939	6.879	704879	10235	6.091	0.203 #
37) L8 AR-1262-2	0.000	7.089	0	22839	N.D.	0.202 #
38) L8 AR-1262-3	0.000	7.617	0	23634	N.D.	0.270 #
39) L8 AR-1262-4	8.962f	7.687	504683	45793	4.444	0.280 #
41) L9 AR-1268-1	0.000	7.617	0	23634	N.D.	0.091 #
42) L9 AR-1268-2	8.962f	7.687	504683	45793	2.199	0.198 #
43) L9 AR-1268-3	0.000	7.903	0	49249	N.D.	0.241 #

Data Path : Z:\pestpcbsrv\HPCHEM1\ECD_P\Data\PP091923\
 Data File : PP060007.D
 Signal(s) : Signal #1: ECD1A.ch Signal #2: ECD2B.ch
 Acq On : 20 Sep 2023 08:54
 Operator : YP\AJ
 Sample : 04486-05 10X
 Misc :
 ALS Vial : 52 Sample Multiplier: 1

Instrument :
 FID_C
 ClientSampleId :

Integration File signal 1: autoint1.e
 Integration File signal 2: autoint2.e
 Quant Time: Sep 20 11:15:41 2023
 Quant Method : Z:\pestpcbsrv\HPCHEM1\ECD_P\methods\PP091823.M
 Quant Title : GC EXTRACTABLES
 QLast Update : Tue Sep 19 09:22:53 2023
 Response via : Initial Calibration
 Integrator: ChemStation

Volume Inj. : 2 µl
 Signal #1 Phase : ZB-MR1 Signal #2 Phase: ZB-MR2
 Signal #1 Info : 30Mx0.32mmx 0.50µ Signal #2 Info : 30M x 0.32mm x 0.25µm

	Compound	RT#1	RT#2	Resp#1	Resp#2	ng/ml	ng/ml
45)	L9 AR-1268-5	0.000	8.496	0	212480	N.D.	0.336 #

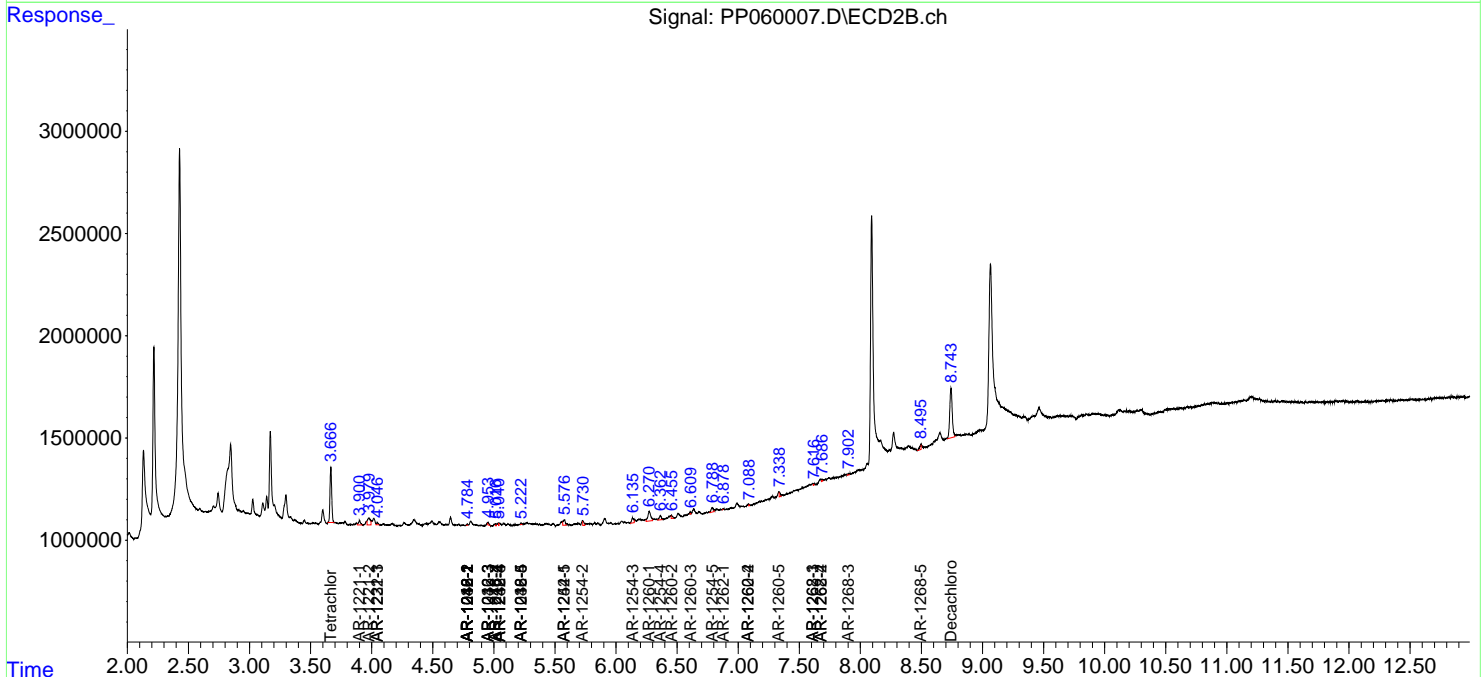
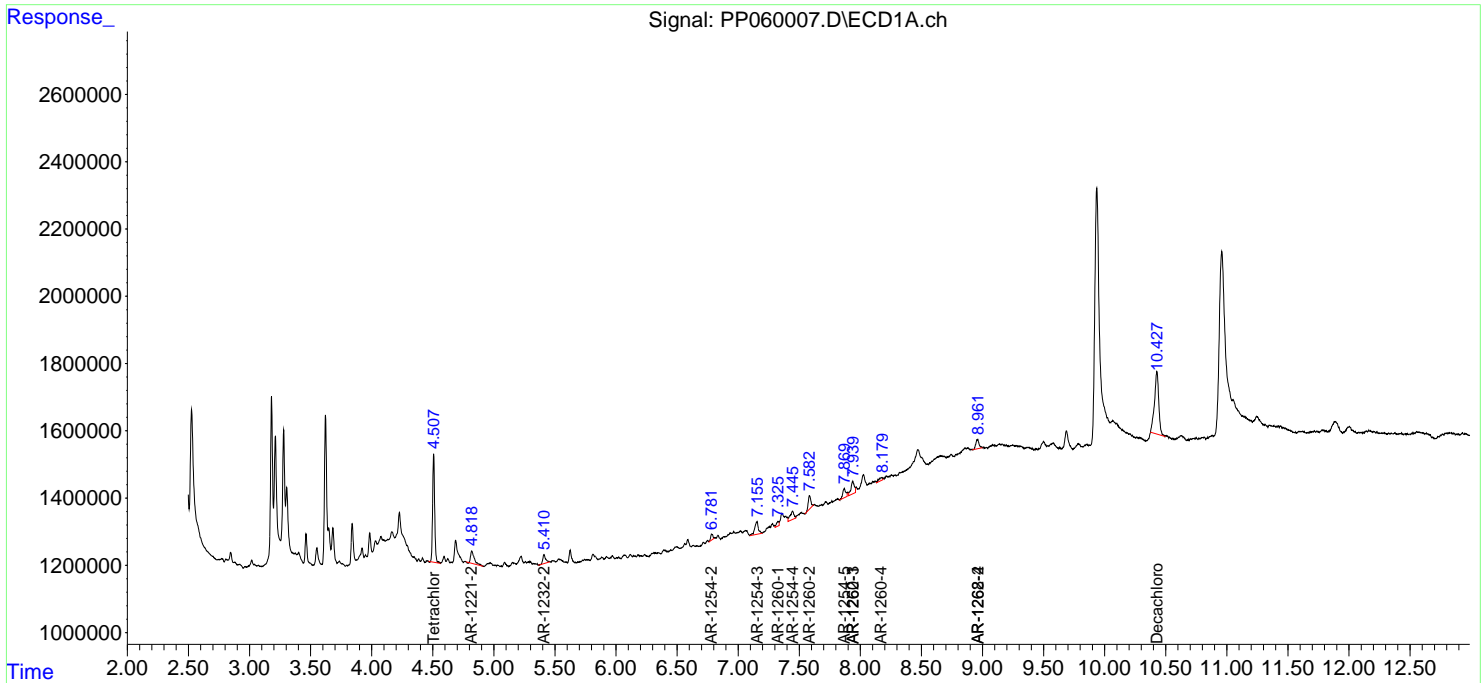
(f)=RT Delta > 1/2 Window (#)=Amounts differ by > 25% (m)=manual int.

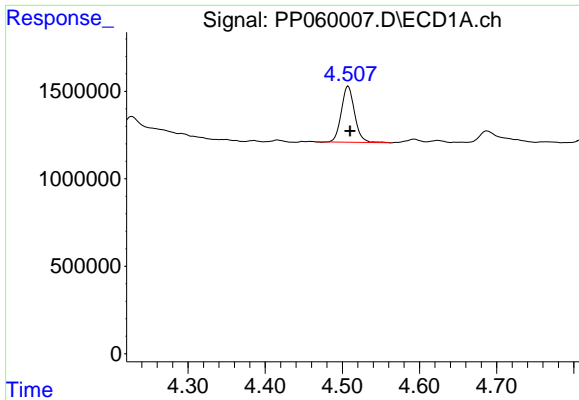
Data Path : Z:\pestpcbsrv\HPCHEM1\ECD_P\Data\PP091923\
 Data File : PP060007.D
 Signal(s) : Signal #1: ECD1A.ch Signal #2: ECD2B.ch
 Acq On : 20 Sep 2023 08:54
 Operator : YP\AJ
 Sample : 04486-05 10X
 Misc :
 ALS Vial : 52 Sample Multiplier: 1

Instrument :
 FID_C
 ClientSampleId :

Integration File signal 1: autoint1.e
 Integration File signal 2: autoint2.e
 Quant Time: Sep 20 11:15:41 2023
 Quant Method : Z:\pestpcbsrv\HPCHEM1\ECD_P\methods\PP091823.M
 Quant Title : GC EXTRACTABLES
 QLast Update : Tue Sep 19 09:22:53 2023
 Response via : Initial Calibration
 Integrator: ChemStation

Volume Inj. : 2 µl
 Signal #1 Phase : ZB-MR1 Signal #2 Phase: ZB-MR2
 Signal #1 Info : 30Mx0.32mmx 0.50µ Signal #2 Info : 30M x 0.32mm x 0.25µm

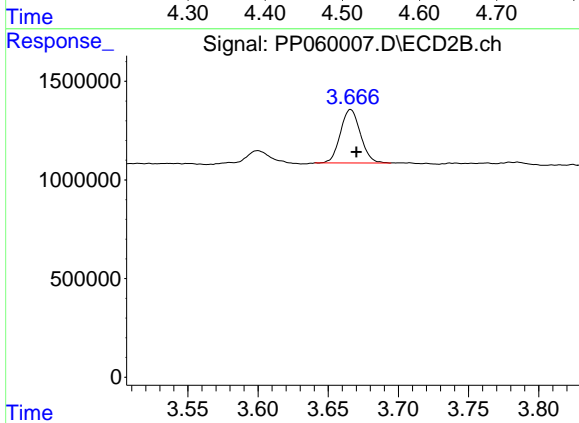




#1 Tetrachloro-m-xylene

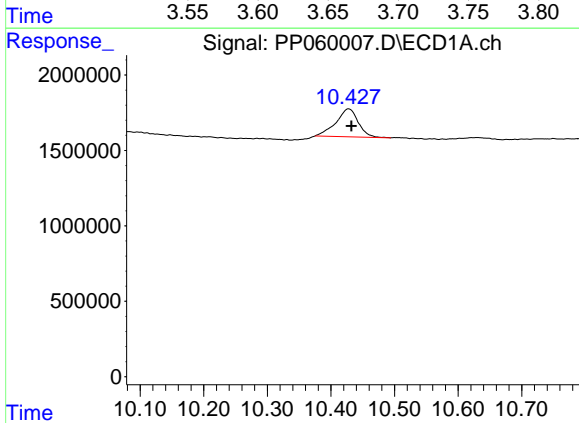
R.T.: 4.508 min
 Delta R.T.: -0.002 min
 Response: 3816360
 Conc: 1.83 ng/ml

Instrument :
 FID_C
 ClientSampleId :



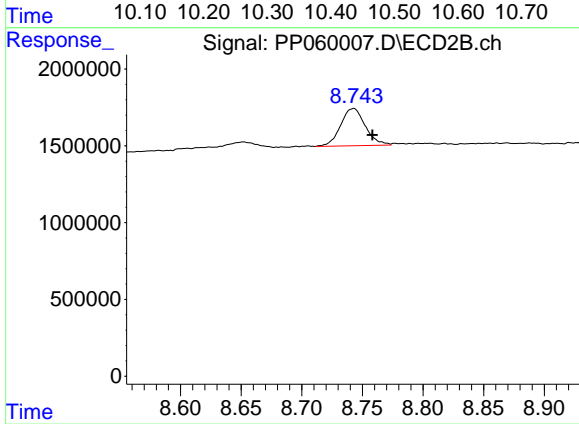
#1 Tetrachloro-m-xylene

R.T.: 3.666 min
 Delta R.T.: -0.004 min
 Response: 2682734
 Conc: 1.65 ng/ml



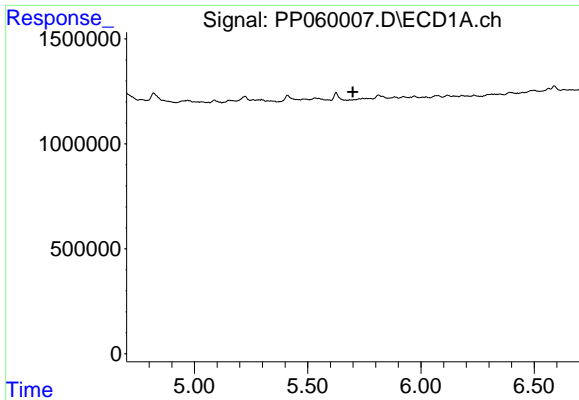
#2 Decachlorobiphenyl

R.T.: 10.428 min
 Delta R.T.: -0.004 min
 Response: 4551521
 Conc: 2.98 ng/ml



#2 Decachlorobiphenyl

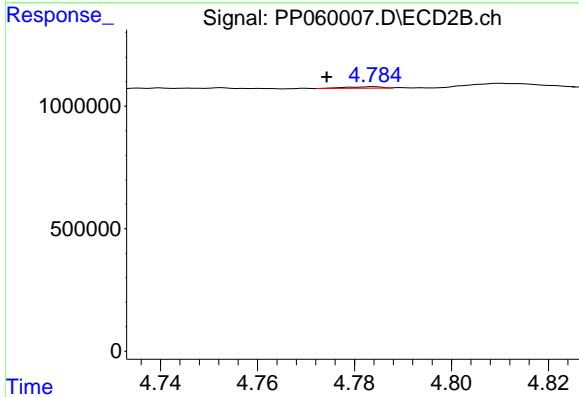
R.T.: 8.743 min
 Delta R.T.: -0.015 min
 Response: 3446470
 Conc: 2.28 ng/ml



#3 AR-1016-1

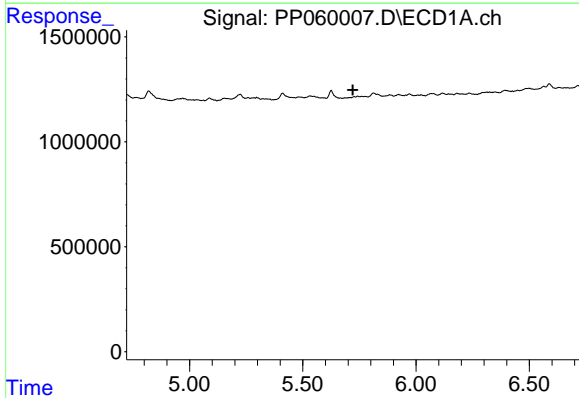
R.T.: 0.000 min
 Exp R.T.: 5.699 min
 Response: 0
 Conc: N.D.

Instrument : FID_C
 ClientSampleId :



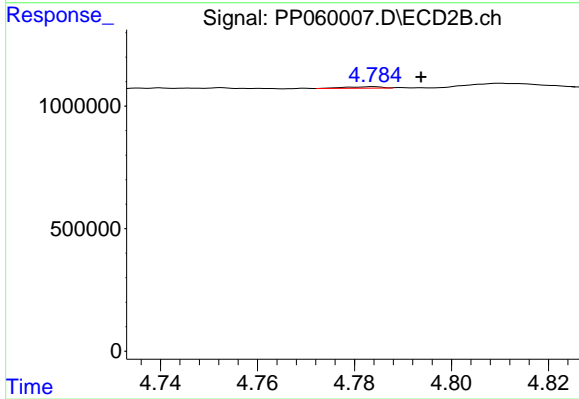
#3 AR-1016-1

R.T.: 4.784 min
 Delta R.T.: 0.010 min
 Response: 30152
 Conc: 0.50 ng/ml



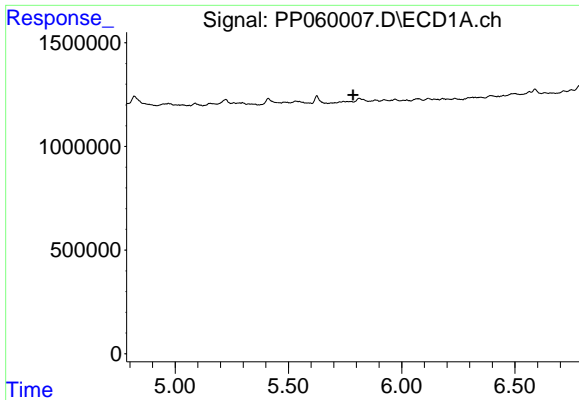
#4 AR-1016-2

R.T.: 0.000 min
 Exp R.T.: 5.721 min
 Response: 0
 Conc: N.D.



#4 AR-1016-2

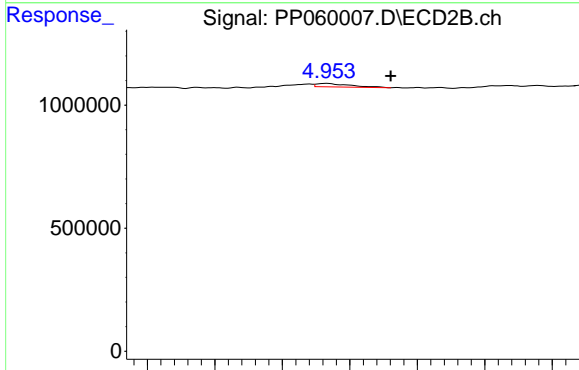
R.T.: 4.784 min
 Delta R.T.: -0.010 min
 Response: 30152
 Conc: 0.36 ng/ml



#5 AR-1016-3

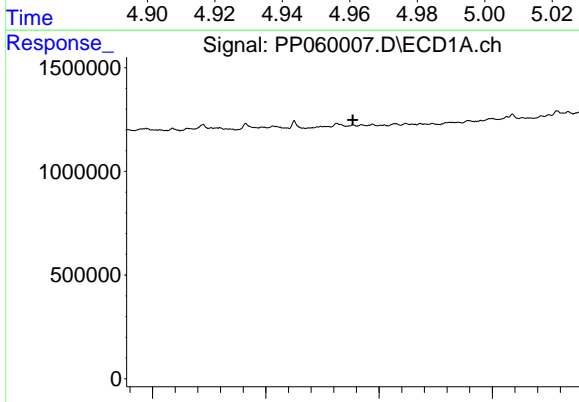
R.T.: 0.000 min
 Exp R.T.: 5.785 min
 Response: 0
 Conc: N.D.

Instrument :
 FID_C
 ClientSampleId :



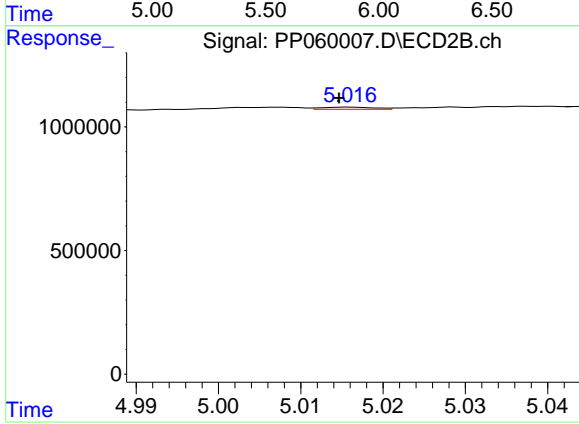
#5 AR-1016-3

R.T.: 4.953 min
 Delta R.T.: -0.019 min
 Response: 98067
 Conc: 2.19 ng/ml



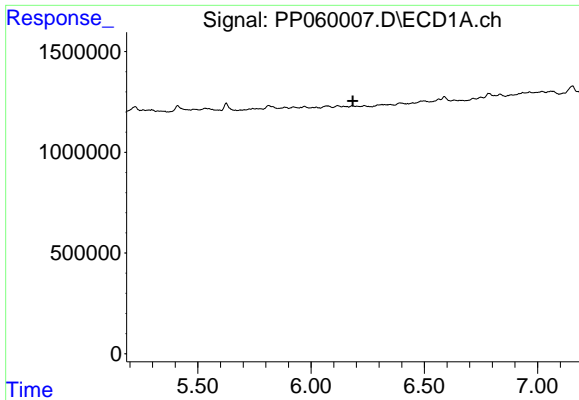
#6 AR-1016-4

R.T.: 0.000 min
 Exp R.T.: 5.885 min
 Response: 0
 Conc: N.D.



#6 AR-1016-4

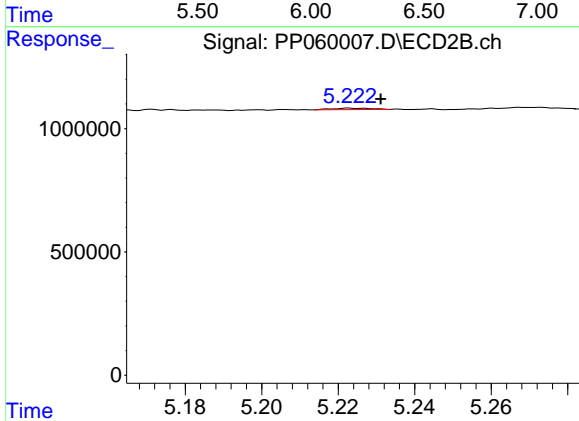
R.T.: 5.016 min
 Delta R.T.: 0.001 min
 Response: 40252
 Conc: 1.14 ng/ml



#7 AR-1016-5

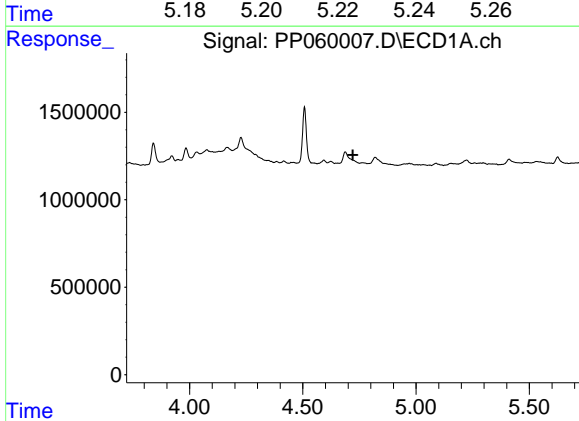
R.T.: 0.000 min
 Exp R.T.: 6.184 min
 Response: 0
 Conc: N.D.

Instrument :
 FID_C
 ClientSampleId :



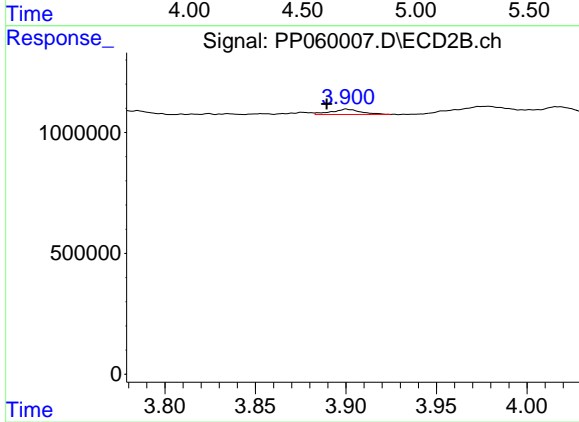
#7 AR-1016-5

R.T.: 5.223 min
 Delta R.T.: -0.008 min
 Response: 43598
 Conc: 0.94 ng/ml



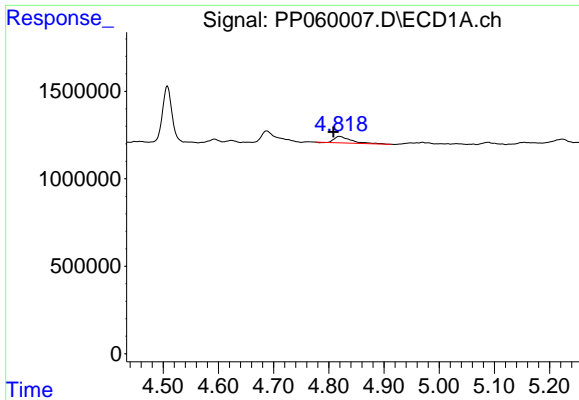
#8 AR-1221-1

R.T.: 0.000 min
 Exp R.T.: 4.721 min
 Response: 0
 Conc: N.D.



#8 AR-1221-1

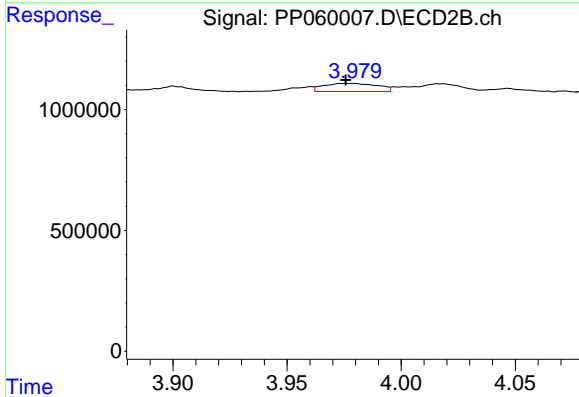
R.T.: 3.900 min
 Delta R.T.: 0.011 min
 Response: 249540
 Conc: 11.36 ng/ml



#9 AR-1221-2

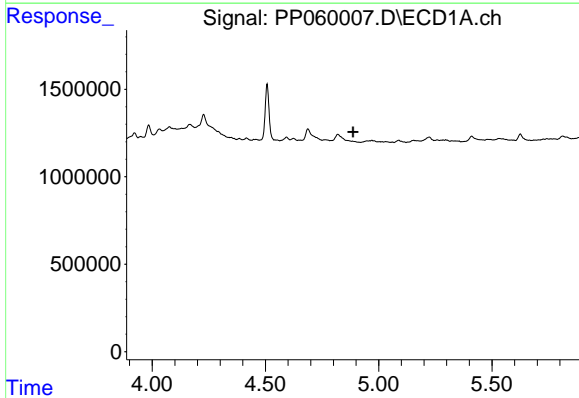
R.T.: 4.819 min
 Delta R.T.: 0.010 min
 Response: 764383
 Conc: 38.83 ng/ml

Instrument :
 FID_C
 ClientSampleId :



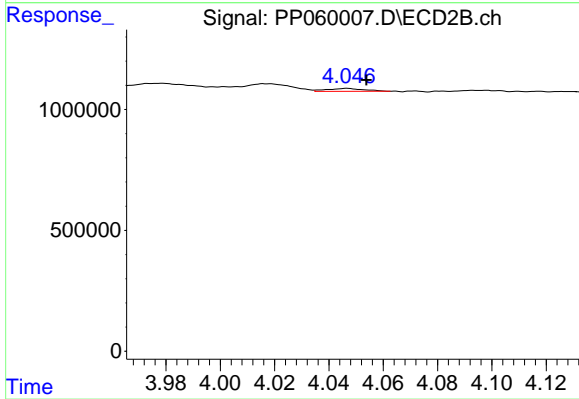
#9 AR-1221-2

R.T.: 3.979 min
 Delta R.T.: 0.003 min
 Response: 544720
 Conc: 35.28 ng/ml



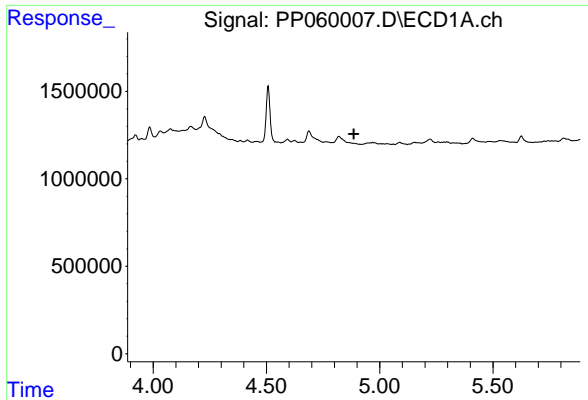
#10 AR-1221-3

R.T.: 0.000 min
 Exp R.T. : 4.887 min
 Response: 0
 Conc: N.D.



#10 AR-1221-3

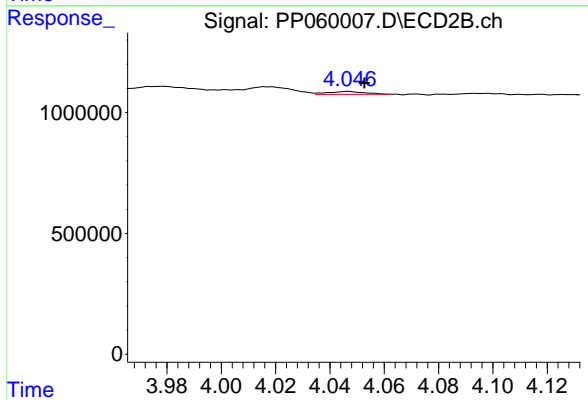
R.T.: 4.047 min
 Delta R.T.: -0.007 min
 Response: 112026
 Conc: 2.39 ng/ml



#11 AR-1232-1

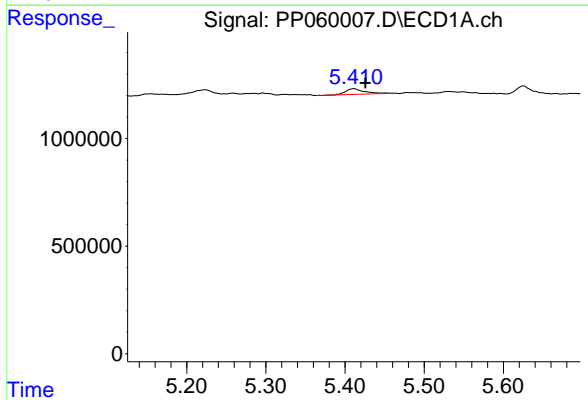
R.T.: 0.000 min
 Exp R.T.: 4.886 min
 Response: 0
 Conc: N.D.

Instrument :
 FID_C
 ClientSampleId :



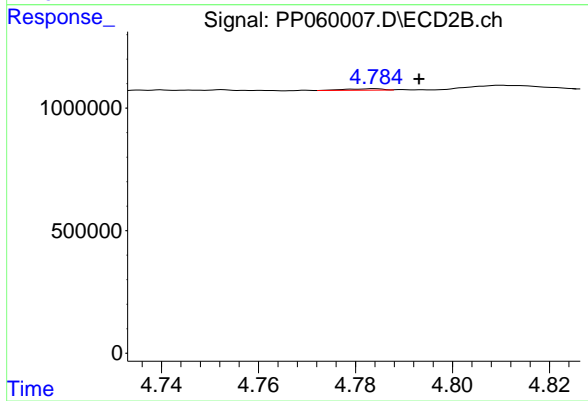
#11 AR-1232-1

R.T.: 4.047 min
 Delta R.T.: -0.006 min
 Response: 112026
 Conc: 2.95 ng/ml



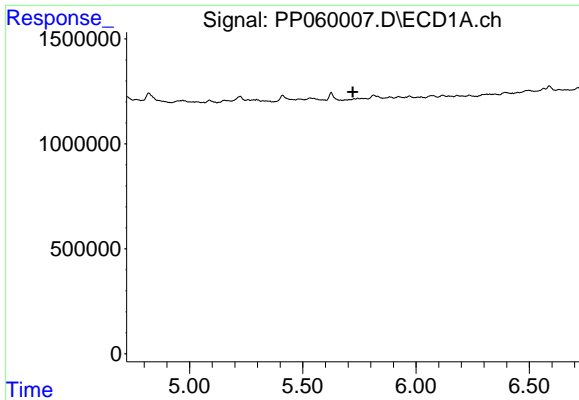
#12 AR-1232-2

R.T.: 5.411 min
 Delta R.T.: -0.014 min
 Response: 433586
 Conc: 17.07 ng/ml



#12 AR-1232-2

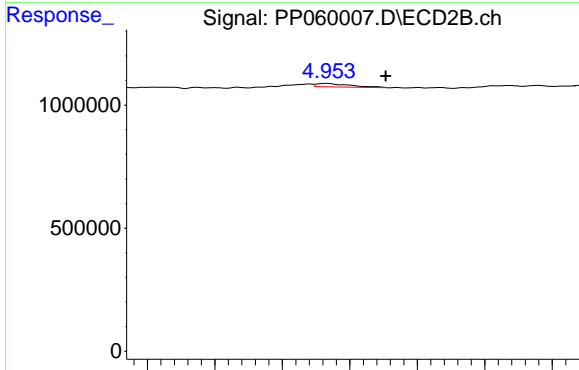
R.T.: 4.784 min
 Delta R.T.: -0.009 min
 Response: 30152
 Conc: 0.82 ng/ml



#13 AR-1232-3

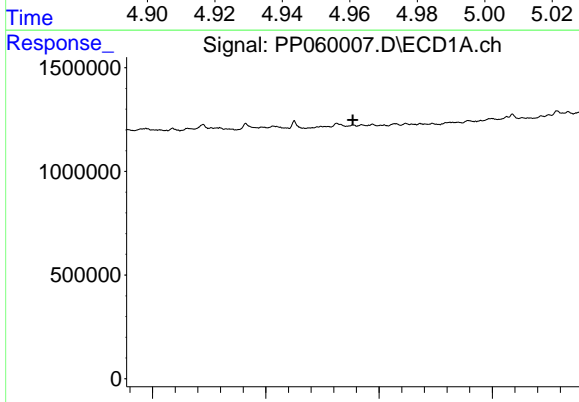
R.T.: 0.000 min
 Exp R.T. : 5.721 min
 Response: 0
 Conc: N.D.

Instrument :
 FID_C
 ClientSampleId :



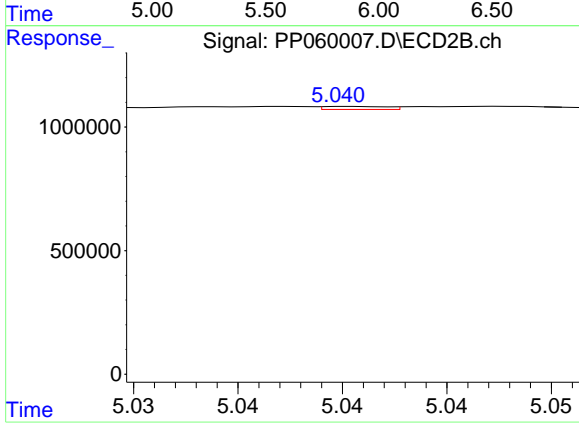
#13 AR-1232-3

R.T.: 4.953 min
 Delta R.T.: -0.017 min
 Response: 98067
 Conc: 4.90 ng/ml



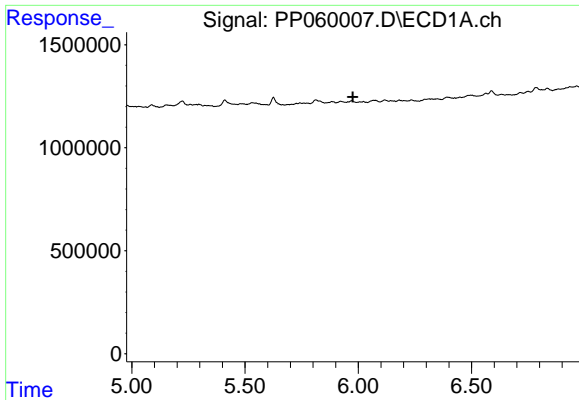
#14 AR-1232-4

R.T.: 0.000 min
 Exp R.T. : 5.884 min
 Response: 0
 Conc: N.D.



#14 AR-1232-4

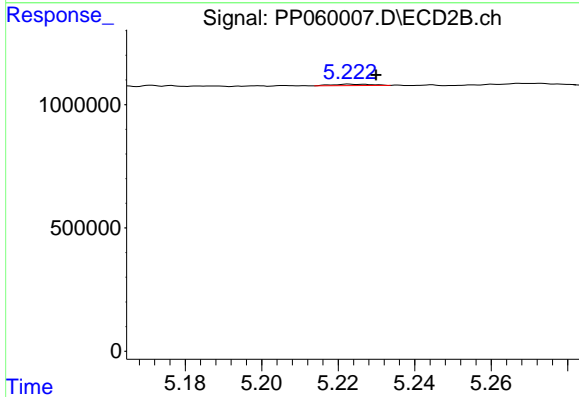
R.T.: 5.040 min
 Delta R.T.: -0.016 min
 Response: 25754
 Conc: 1.41 ng/ml



#15 AR-1232-5

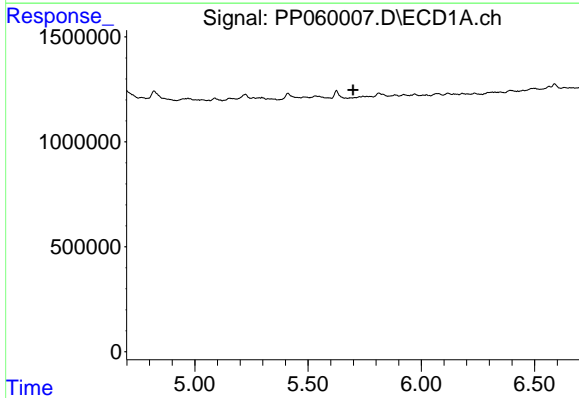
R.T.: 0.000 min
 Exp R.T. : 5.976 min
 Response: 0
 Conc: N.D.

Instrument :
 FID_C
 ClientSampleId :



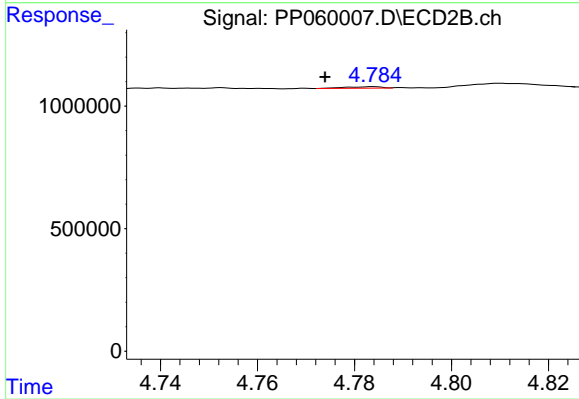
#15 AR-1232-5

R.T.: 5.223 min
 Delta R.T.: -0.007 min
 Response: 43598
 Conc: 2.17 ng/ml



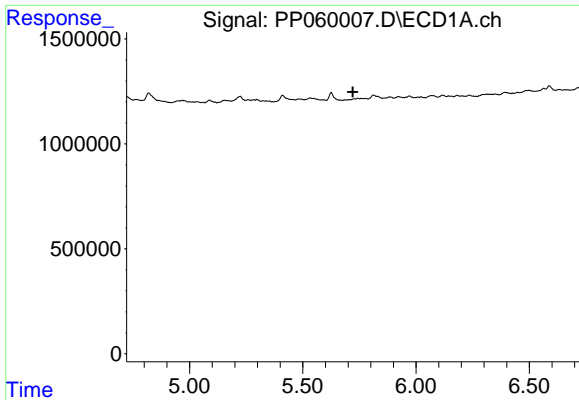
#16 AR-1242-1

R.T.: 0.000 min
 Exp R.T. : 5.699 min
 Response: 0
 Conc: N.D.



#16 AR-1242-1

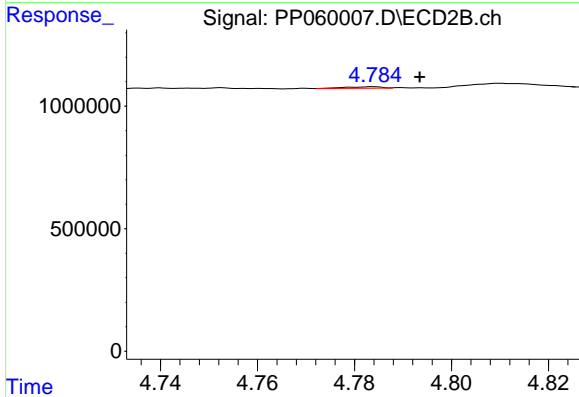
R.T.: 4.784 min
 Delta R.T.: 0.010 min
 Response: 30152
 Conc: 0.57 ng/ml



#17 AR-1242-2

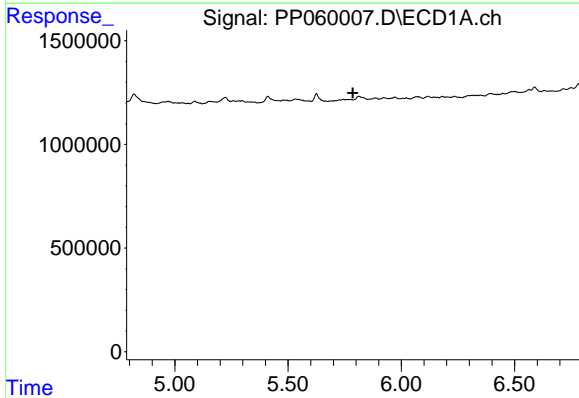
R.T.: 0.000 min
 Exp R.T.: 5.721 min
 Response: 0
 Conc: N.D.

Instrument :
 FID_C
 ClientSampleId :



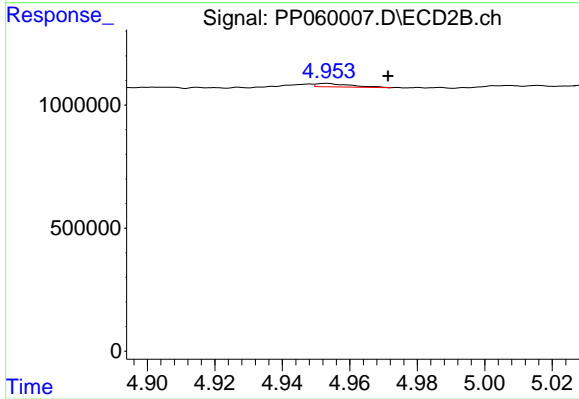
#17 AR-1242-2

R.T.: 4.784 min
 Delta R.T.: -0.009 min
 Response: 30152
 Conc: 0.42 ng/ml



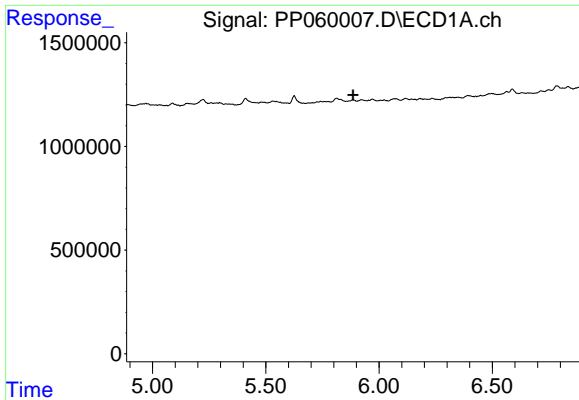
#18 AR-1242-3

R.T.: 0.000 min
 Exp R.T.: 5.785 min
 Response: 0
 Conc: N.D.



#18 AR-1242-3

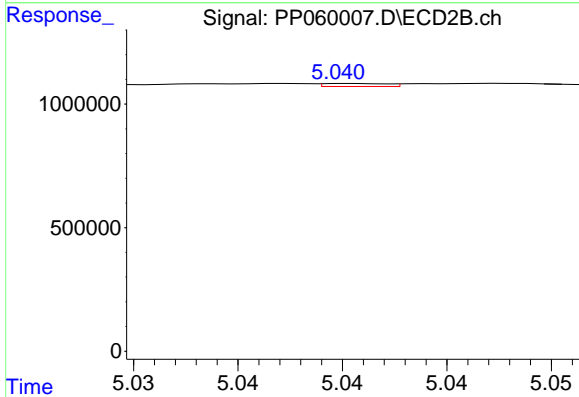
R.T.: 4.953 min
 Delta R.T.: -0.018 min
 Response: 98067
 Conc: 2.51 ng/ml



#19 AR-1242-4

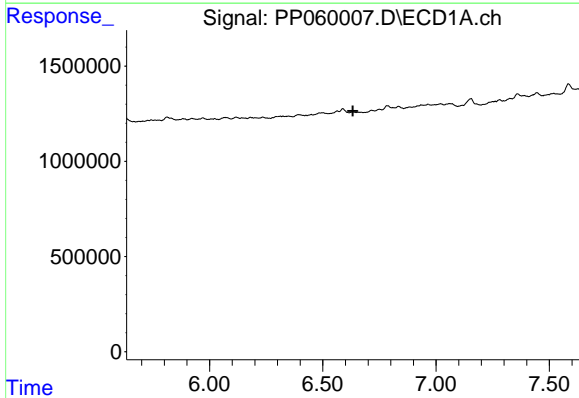
R.T.: 0.000 min
 Exp R.T.: 5.885 min
 Response: 0
 Conc: N.D.

Instrument :
 FID_C
 ClientSampleId :



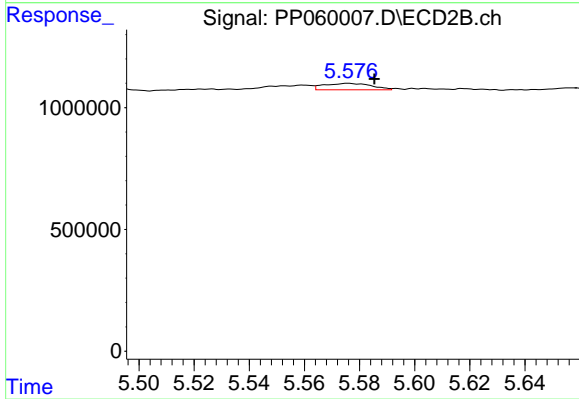
#19 AR-1242-4

R.T.: 5.040 min
 Delta R.T.: -0.017 min
 Response: 25754
 Conc: 0.66 ng/ml



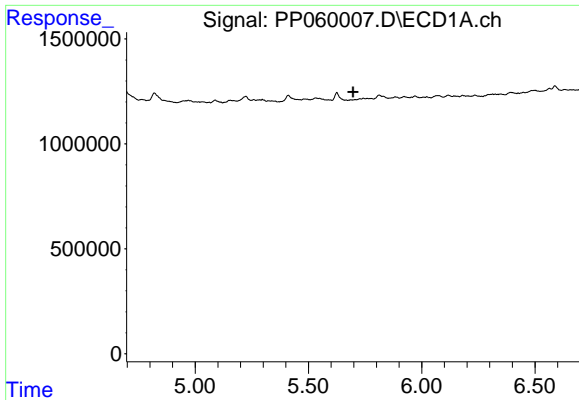
#20 AR-1242-5

R.T.: 0.000 min
 Exp R.T.: 6.633 min
 Response: 0
 Conc: N.D.



#20 AR-1242-5

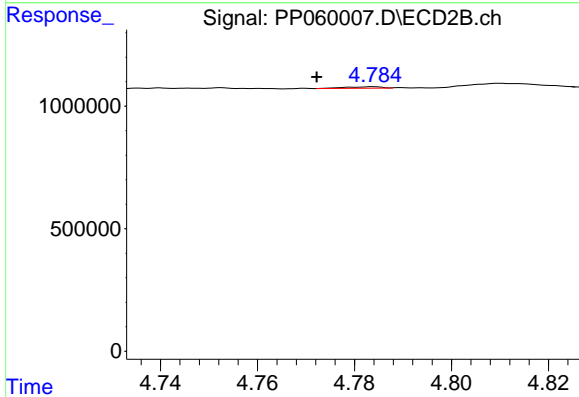
R.T.: 5.576 min
 Delta R.T.: -0.009 min
 Response: 315137
 Conc: 6.51 ng/ml



#21 AR-1248-1

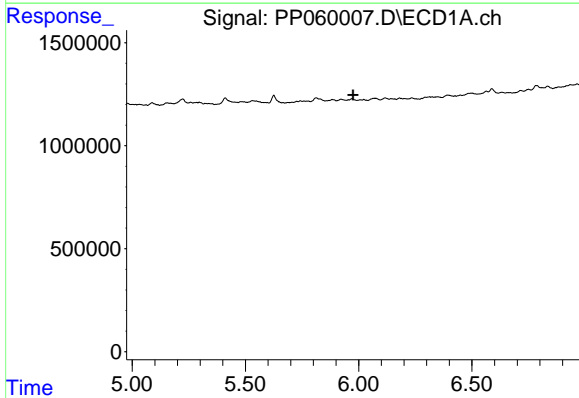
R.T.: 0.000 min
 Exp R.T. : 5.697 min
 Response: 0
 Conc: N.D.

Instrument :
 FID_C
 ClientSampleId :



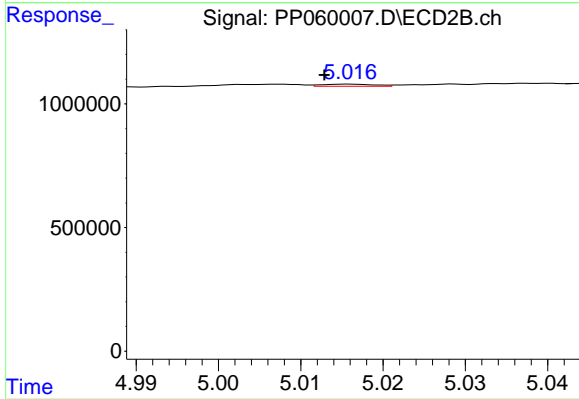
#21 AR-1248-1

R.T.: 4.784 min
 Delta R.T.: 0.012 min
 Response: 30152
 Conc: 0.77 ng/ml



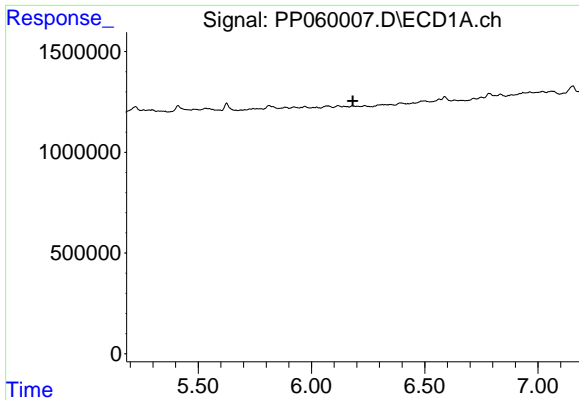
#22 AR-1248-2

R.T.: 0.000 min
 Exp R.T. : 5.975 min
 Response: 0
 Conc: N.D.



#22 AR-1248-2

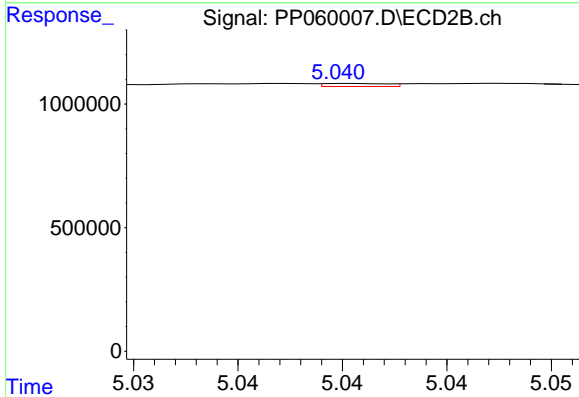
R.T.: 5.016 min
 Delta R.T.: 0.003 min
 Response: 40252
 Conc: 0.74 ng/ml



#23 AR-1248-3

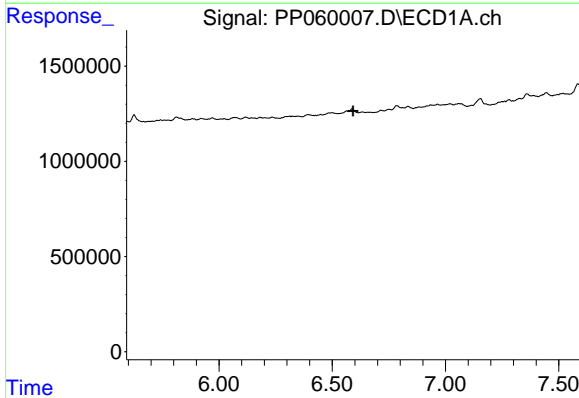
R.T.: 0.000 min
 Exp R.T.: 6.183 min
 Response: 0
 Conc: N.D.

Instrument :
 FID_C
 ClientSampleId :



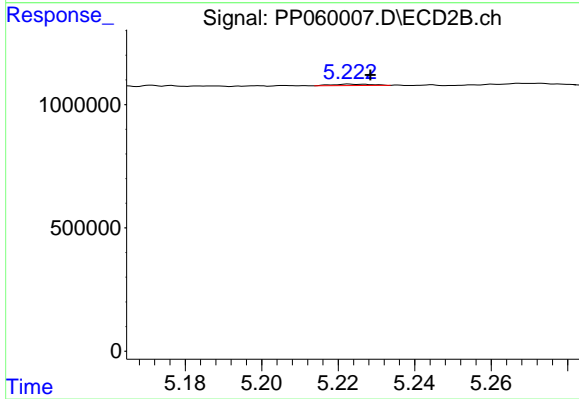
#23 AR-1248-3

R.T.: 5.040 min
 Delta R.T.: -0.015 min
 Response: 25754
 Conc: 0.45 ng/ml



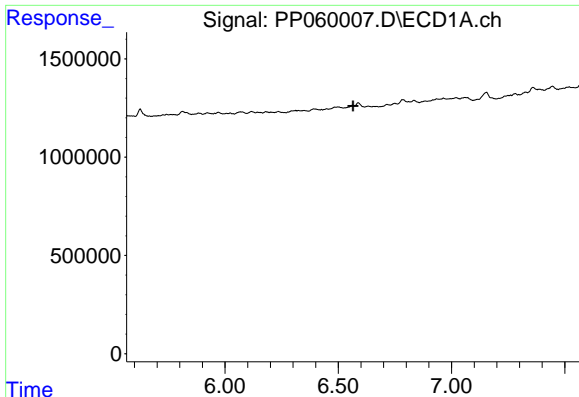
#24 AR-1248-4

R.T.: 0.000 min
 Exp R.T.: 6.592 min
 Response: 0
 Conc: N.D.



#24 AR-1248-4

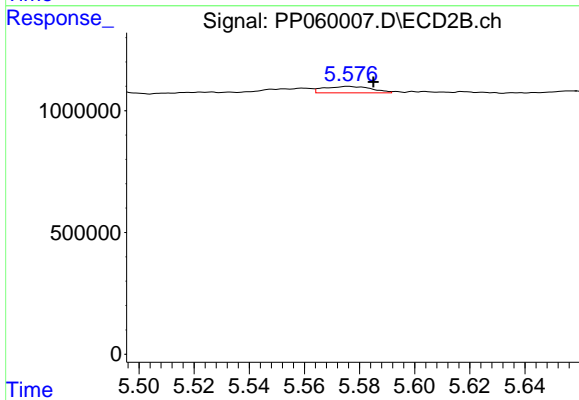
R.T.: 5.223 min
 Delta R.T.: -0.006 min
 Response: 43598
 Conc: 0.65 ng/ml



#26 AR-1254-1

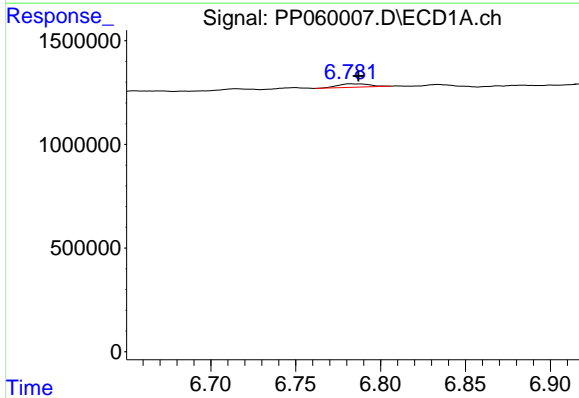
R.T.: 0.000 min
 Exp R.T.: 6.565 min
 Response: 0
 Conc: N.D.

Instrument :
 FID_C
 ClientSampleId :



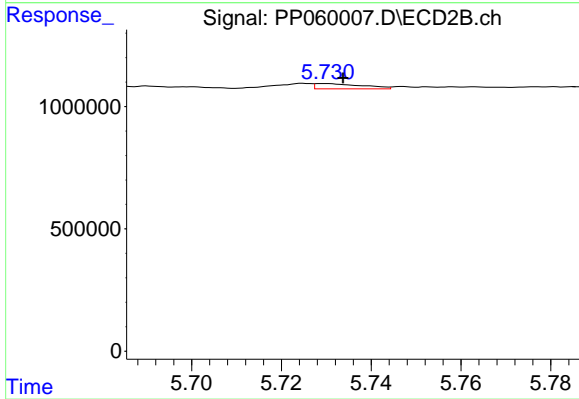
#26 AR-1254-1

R.T.: 5.576 min
 Delta R.T.: -0.009 min
 Response: 315137
 Conc: 3.14 ng/ml



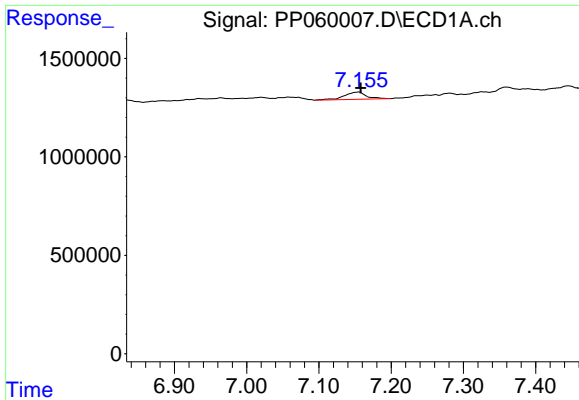
#27 AR-1254-2

R.T.: 6.782 min
 Delta R.T.: -0.005 min
 Response: 216414
 Conc: 1.81 ng/ml



#27 AR-1254-2

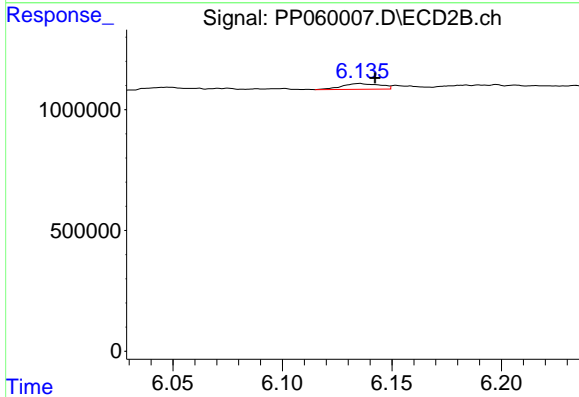
R.T.: 5.730 min
 Delta R.T.: -0.004 min
 Response: 153683
 Conc: 1.77 ng/ml



#28 AR-1254-3

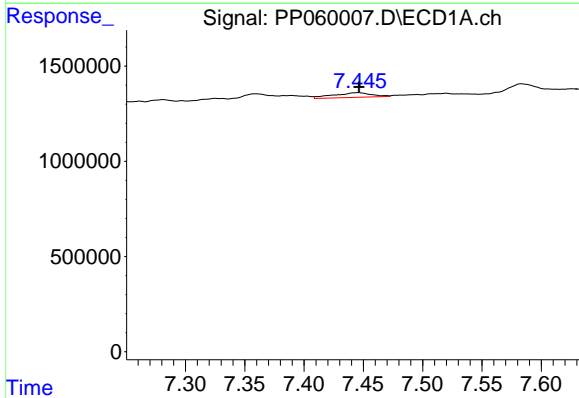
R.T.: 7.155 min
 Delta R.T.: -0.003 min
 Response: 781382
 Conc: 6.43 ng/ml

Instrument :
 FID_C
 ClientSampleId :



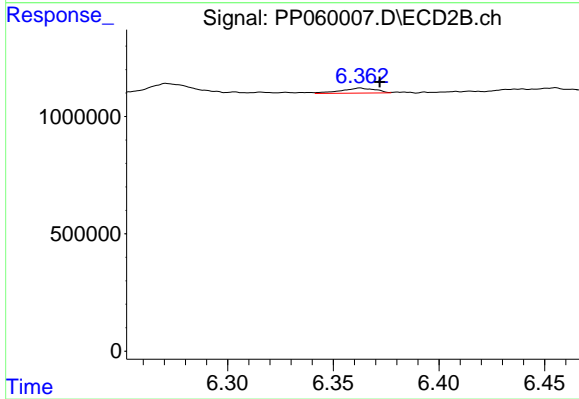
#28 AR-1254-3

R.T.: 6.136 min
 Delta R.T.: -0.007 min
 Response: 286971
 Conc: 2.04 ng/ml



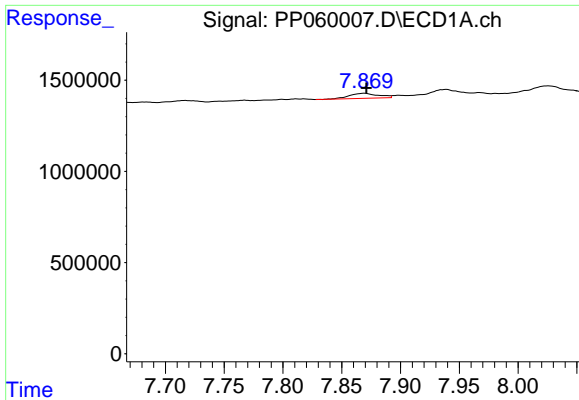
#29 AR-1254-4

R.T.: 7.446 min
 Delta R.T.: 0.000 min
 Response: 550151
 Conc: 6.19 ng/ml



#29 AR-1254-4

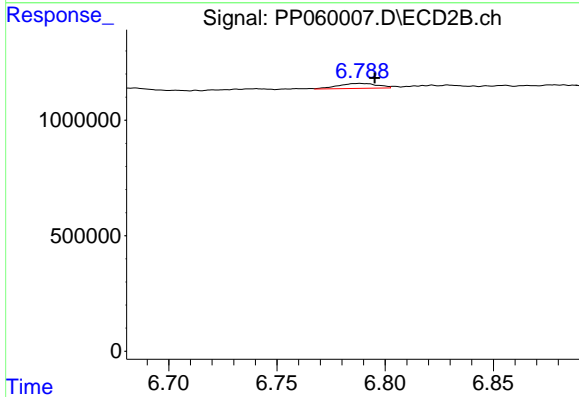
R.T.: 6.363 min
 Delta R.T.: -0.009 min
 Response: 240471
 Conc: 2.86 ng/ml



#30 AR-1254-5

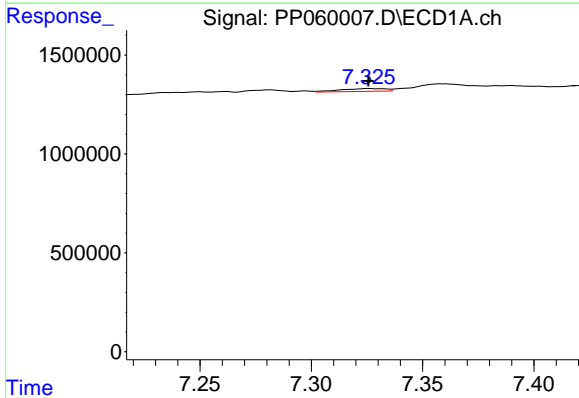
R.T.: 7.869 min
 Delta R.T.: -0.002 min
 Response: 465030
 Conc: 4.78 ng/ml

Instrument :
 FID_C
 ClientSampleId :



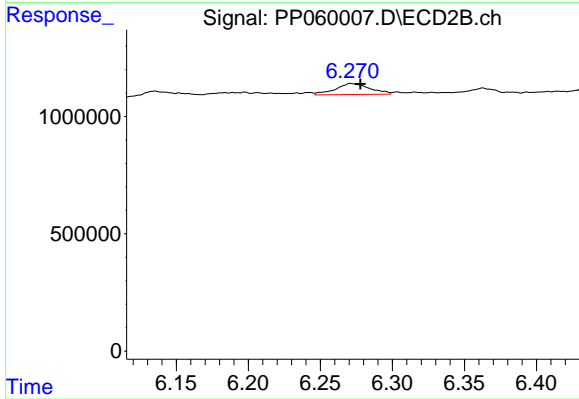
#30 AR-1254-5

R.T.: 6.789 min
 Delta R.T.: -0.007 min
 Response: 273953
 Conc: 2.31 ng/ml



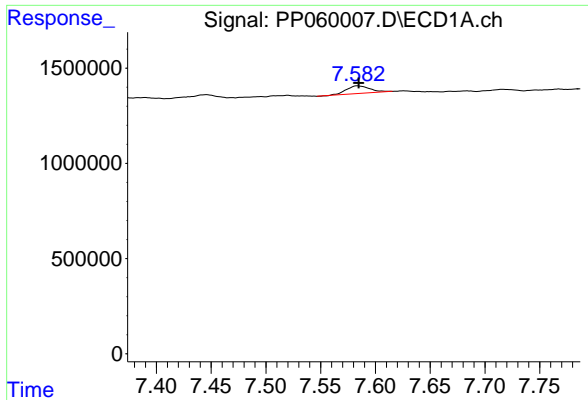
#31 AR-1260-1

R.T.: 7.326 min
 Delta R.T.: 0.000 min
 Response: 203070
 Conc: 2.25 ng/ml



#31 AR-1260-1

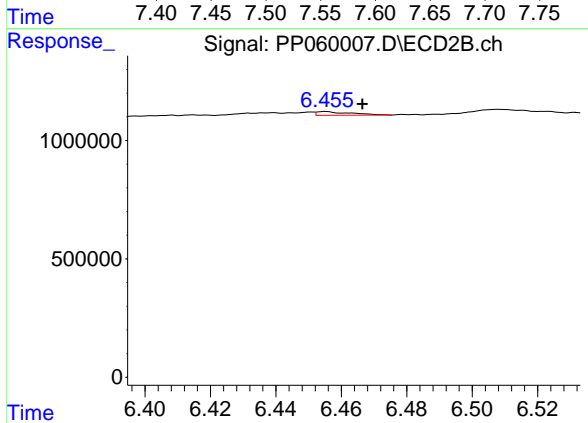
R.T.: 6.271 min
 Delta R.T.: -0.007 min
 Response: 783354
 Conc: 8.41 ng/ml



#32 AR-1260-2

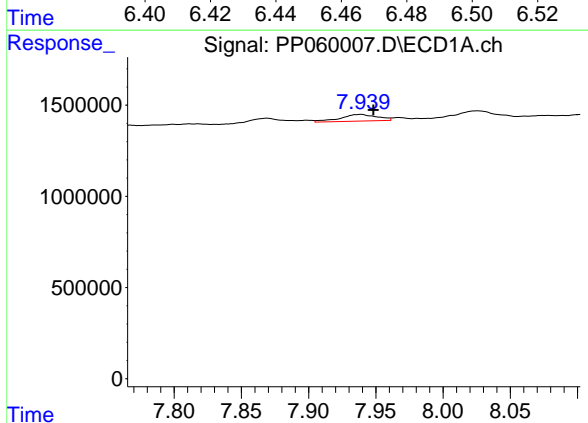
R.T.: 7.584 min
 Delta R.T.: 0.000 min
 Response: 585806
 Conc: 5.71 ng/ml

Instrument :
 FID_C
 ClientSampleId :



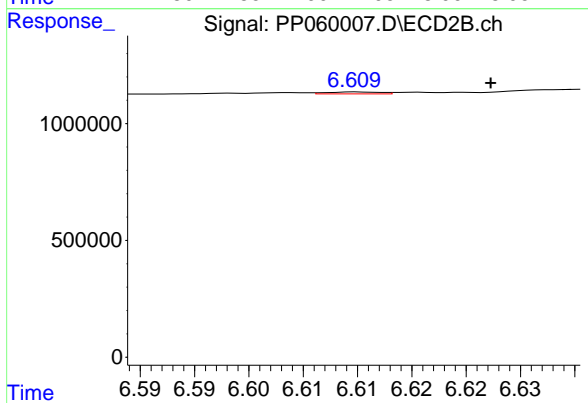
#32 AR-1260-2

R.T.: 6.455 min
 Delta R.T.: -0.011 min
 Response: 113111
 Conc: 1.03 ng/ml



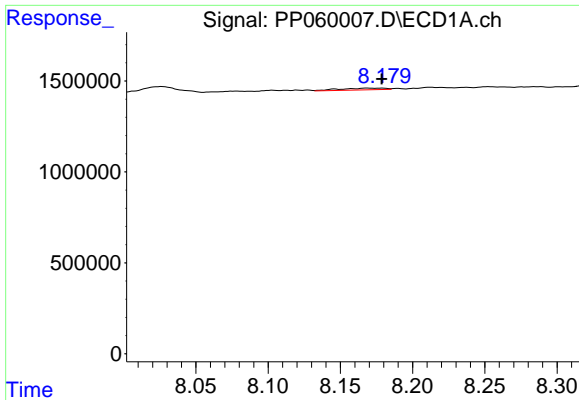
#33 AR-1260-3

R.T.: 7.939 min
 Delta R.T.: -0.009 min
 Response: 704879
 Conc: 8.95 ng/ml



#33 AR-1260-3

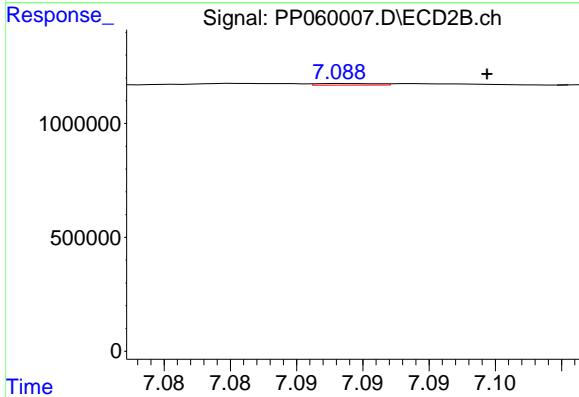
R.T.: 6.610 min
 Delta R.T.: -0.012 min
 Response: 27654
 Conc: 0.27 ng/ml



#34 AR-1260-4

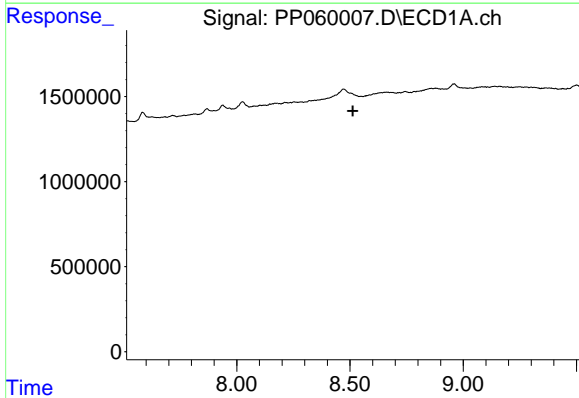
R.T.: 8.168 min
 Delta R.T.: -0.010 min
 Response: 201420
 Conc: 2.25 ng/ml

Instrument :
 FID_C
 ClientSampleId :



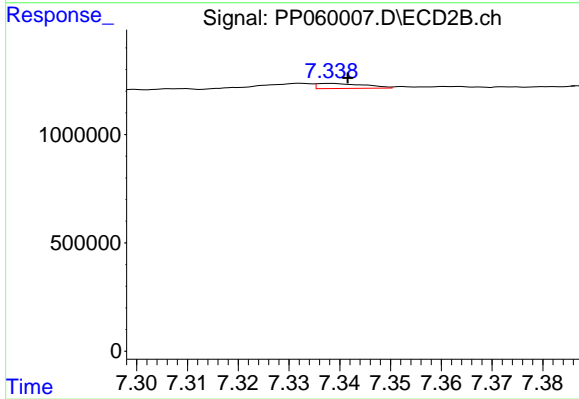
#34 AR-1260-4

R.T.: 7.089 min
 Delta R.T.: -0.011 min
 Response: 22839
 Conc: 0.27 ng/ml



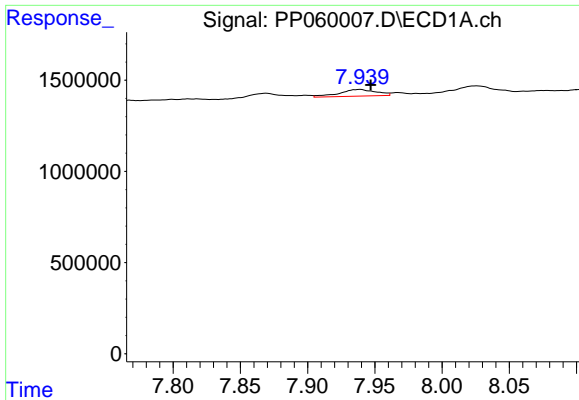
#35 AR-1260-5

R.T.: 0.000 min
 Exp R.T. : 8.513 min
 Response: 0
 Conc: N.D.



#35 AR-1260-5

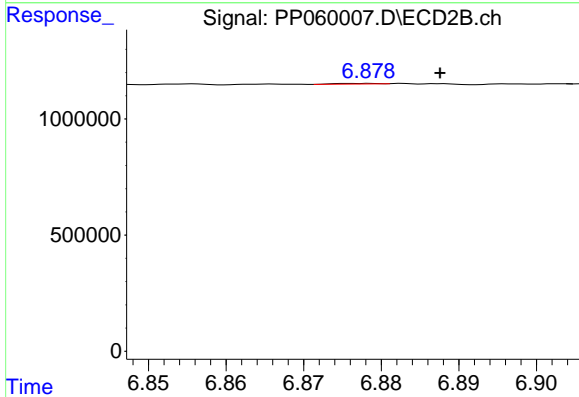
R.T.: 7.338 min
 Delta R.T.: -0.003 min
 Response: 153380
 Conc: 0.80 ng/ml



#36 AR-1262-1

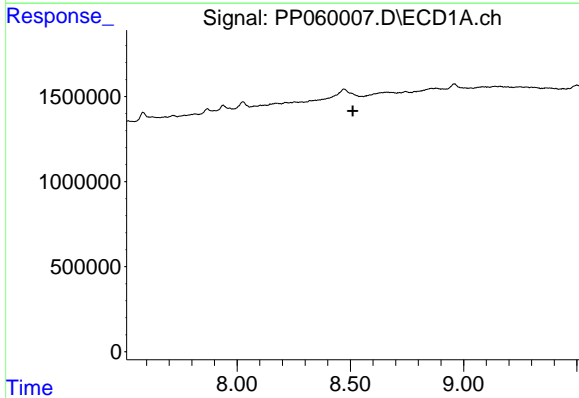
R.T.: 7.939 min
 Delta R.T.: -0.008 min
 Response: 704879
 Conc: 6.09 ng/ml

Instrument :
 FID_C
 ClientSampleId :



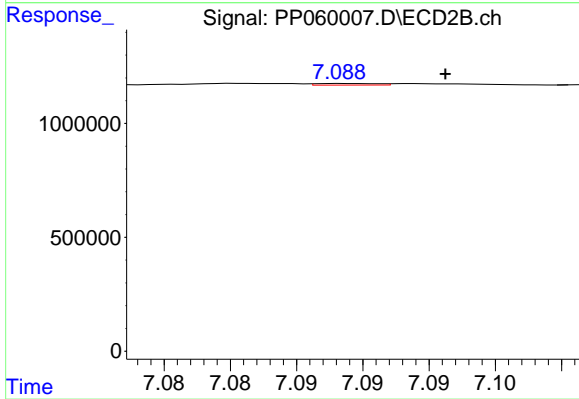
#36 AR-1262-1

R.T.: 6.879 min
 Delta R.T.: -0.009 min
 Response: 10235
 Conc: 0.20 ng/ml



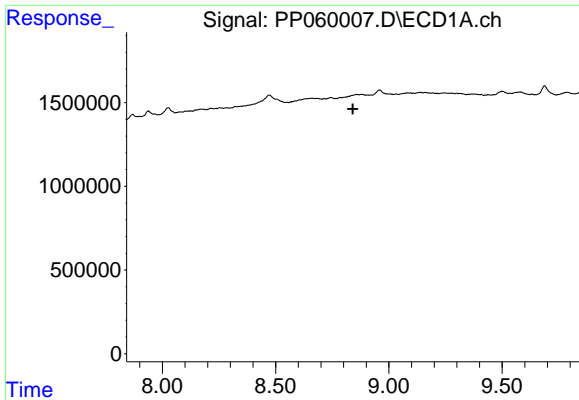
#37 AR-1262-2

R.T.: 0.000 min
 Exp R.T. : 8.511 min
 Response: 0
 Conc: N.D.



#37 AR-1262-2

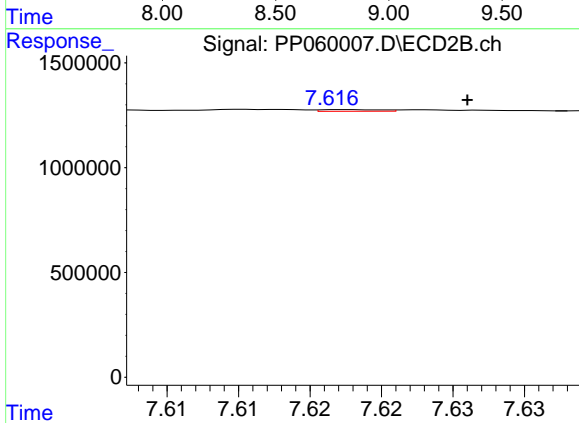
R.T.: 7.089 min
 Delta R.T.: -0.008 min
 Response: 22839
 Conc: 0.20 ng/ml



#38 AR-1262-3

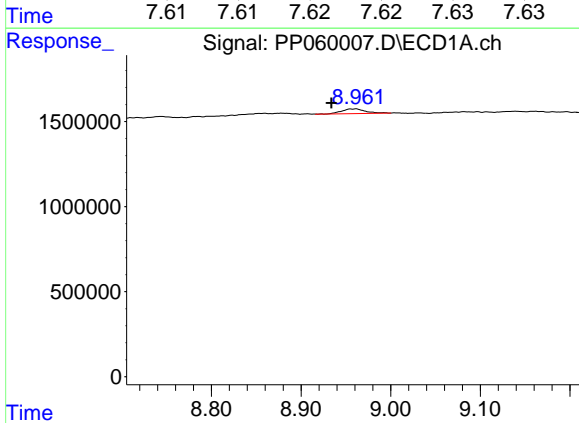
R.T.: 0.000 min
 Exp R.T.: 8.841 min
 Response: 0
 Conc: N.D.

Instrument :
 FID_C
 ClientSampleId :



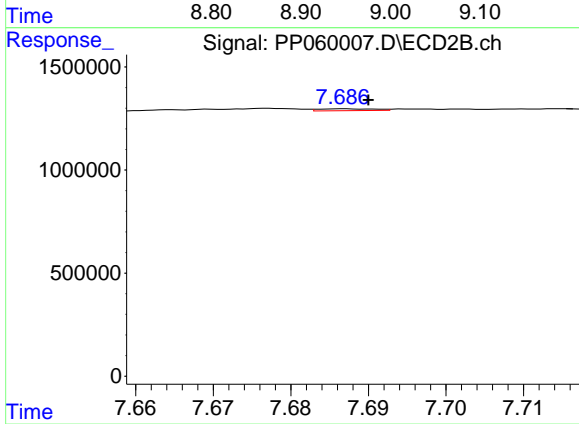
#38 AR-1262-3

R.T.: 7.617 min
 Delta R.T.: -0.009 min
 Response: 23634
 Conc: 0.27 ng/ml



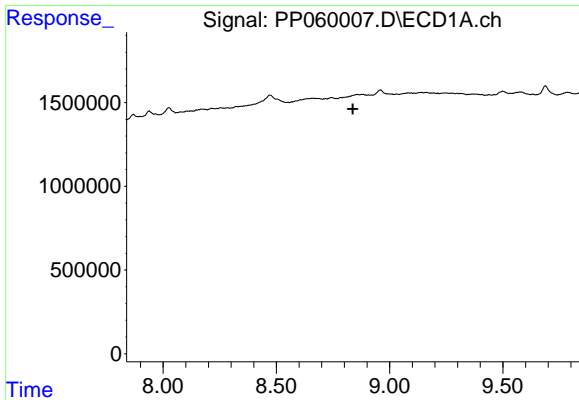
#39 AR-1262-4

R.T.: 8.962 min
 Delta R.T.: 0.028 min
 Response: 504683
 Conc: 4.44 ng/ml



#39 AR-1262-4

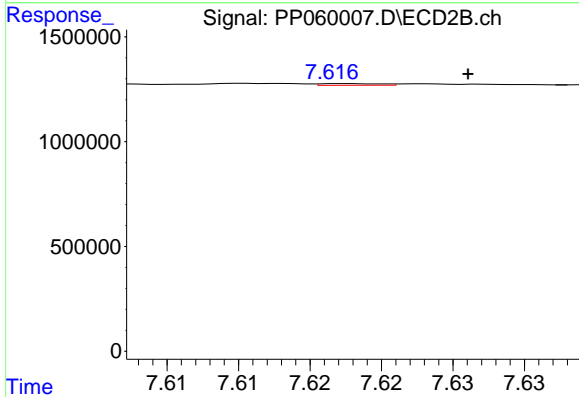
R.T.: 7.687 min
 Delta R.T.: -0.003 min
 Response: 45793
 Conc: 0.28 ng/ml



#41 AR-1268-1

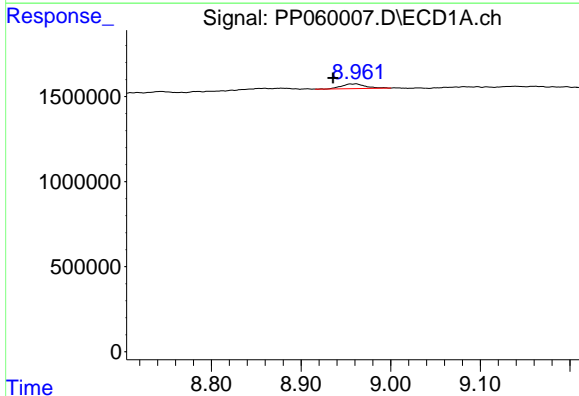
R.T.: 0.000 min
 Exp R.T.: 8.838 min
 Response: 0
 Conc: N.D.

Instrument :
 FID_C
 ClientSampleId :



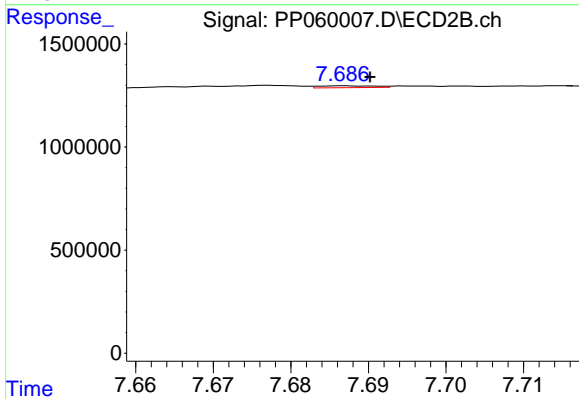
#41 AR-1268-1

R.T.: 7.617 min
 Delta R.T.: -0.009 min
 Response: 23634
 Conc: 0.09 ng/ml



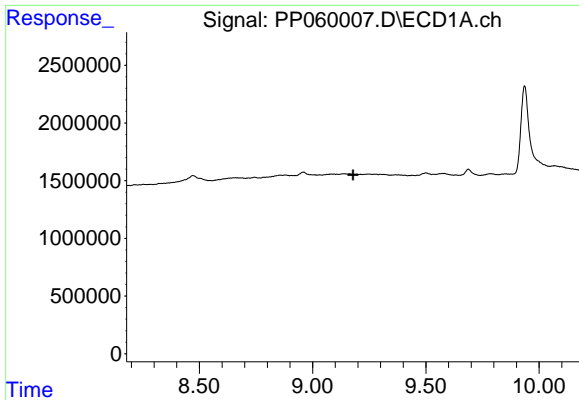
#42 AR-1268-2

R.T.: 8.962 min
 Delta R.T.: 0.026 min
 Response: 504683
 Conc: 2.20 ng/ml



#42 AR-1268-2

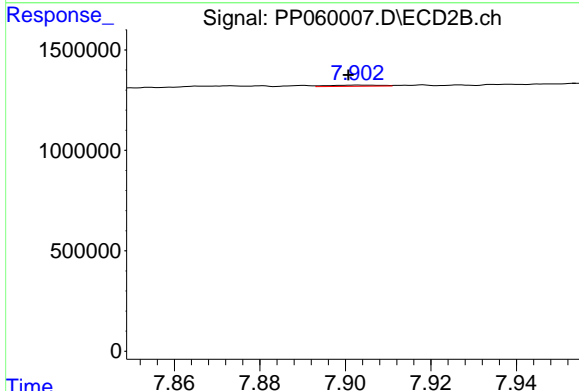
R.T.: 7.687 min
 Delta R.T.: -0.003 min
 Response: 45793
 Conc: 0.20 ng/ml



#43 AR-1268-3

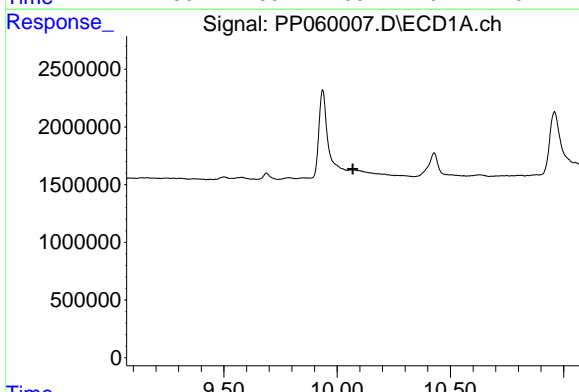
R.T.: 0.000 min
 Exp R.T.: 9.178 min
 Response: 0
 Conc: N.D.

Instrument :
 FID_C
 ClientSampleId :



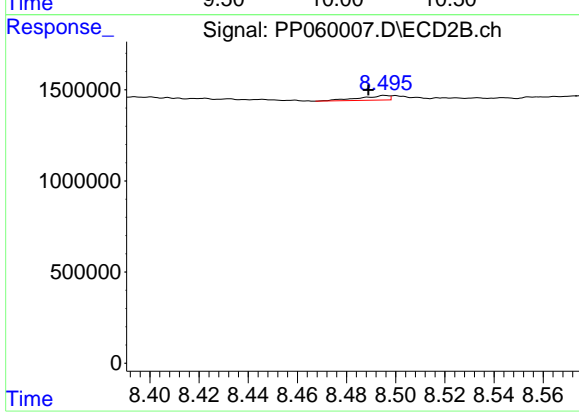
#43 AR-1268-3

R.T.: 7.903 min
 Delta R.T.: 0.002 min
 Response: 49249
 Conc: 0.24 ng/ml



#45 AR-1268-5

R.T.: 0.000 min
 Exp R.T.: 10.069 min
 Response: 0
 Conc: N.D.



#45 AR-1268-5

R.T.: 8.496 min
 Delta R.T.: 0.007 min
 Response: 212480
 Conc: 0.34 ng/ml