

Data Path : Z:\pestpcbsrv\HPCHEM1\FID_C\Data\FC092222AL\
 Data File : FC061596.D
 Signal(s) : FID1A.ch
 Acq On : 22 Sep 2022 08:23
 Operator : YP/AJ
 Sample : MELC2
 Misc :
 ALS Vial : 1 Sample Multiplier: 1

Instrument :
 FID_C
 ClientSampleId :

Integration File: autoint1.e
 Quant Time: Sep 22 13:09:58 2022
 Quant Method : Z:\pestpcbsrv\HPCHEM1\FID_C\Method\Aliphatic EPH 092022.M
 Quant Title : GC Extractables
 QLast Update : Tue Sep 20 18:33:32 2022
 Response via : Initial Calibration
 Integrator: ChemStation

Volume Inj. : 1 ul
 Signal Phase : Rxi-1ms
 Signal Info : 20M x 0.18mm x 0.18um

Compound	R.T.	Response	Conc Units

System Monitoring Compounds			
Target Compounds			
18) T n-Dotriacontane (C32)	18.556	697313	4.612 ug/ml
19) T n-Tetratriacontane (C34)	19.340	1390650	9.808 ug/ml
20) T n-Hexatriacontane (C36)	20.078	967740	7.010 ug/ml
21) T n-Octatriacontane (C38)	20.812	353536	2.730 ug/ml
22) T n-Tetracontane (C40)	21.720	60782	0.497 ug/ml

(f)=RT Delta > 1/2 Window

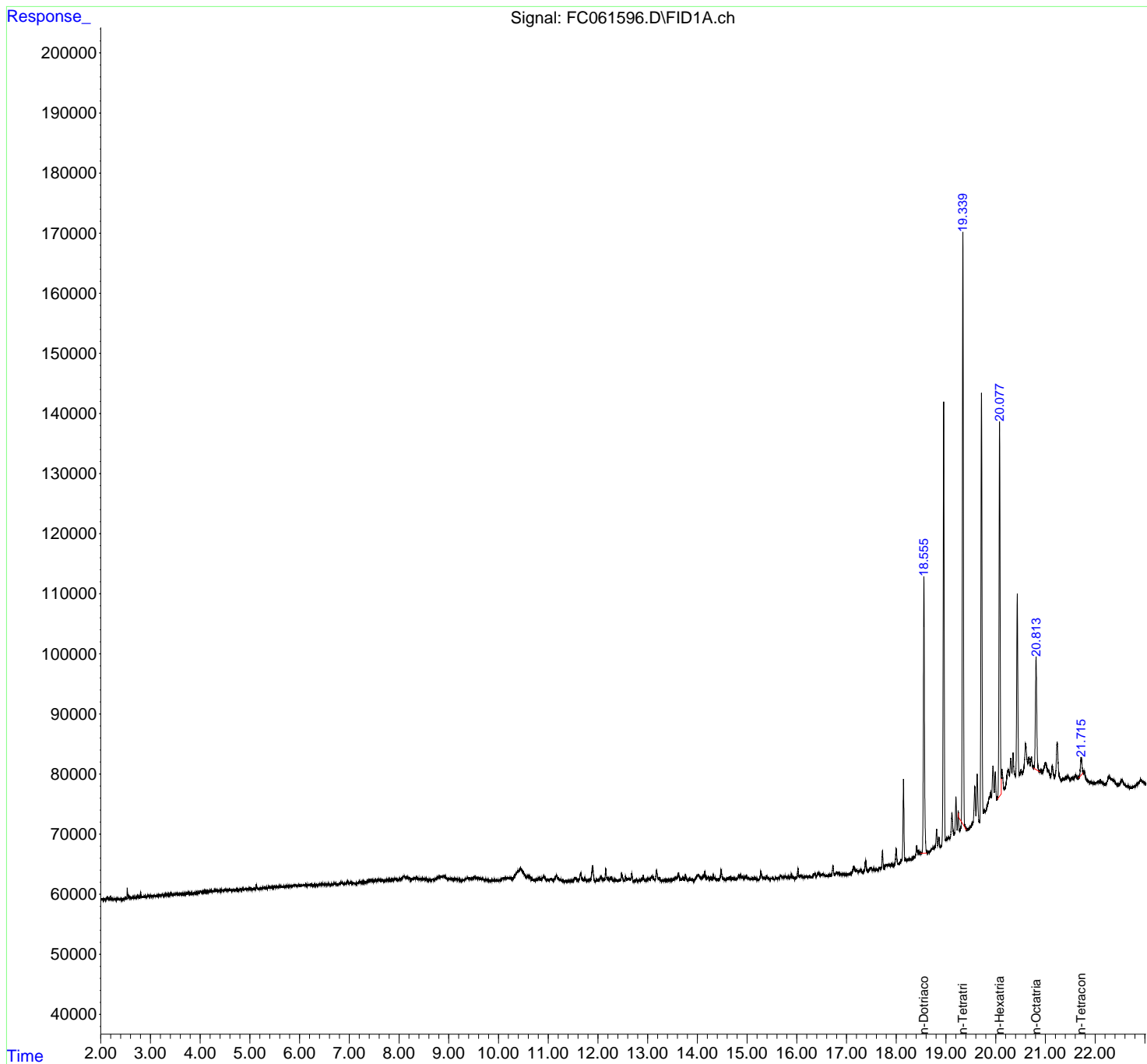
(m)=manual int.

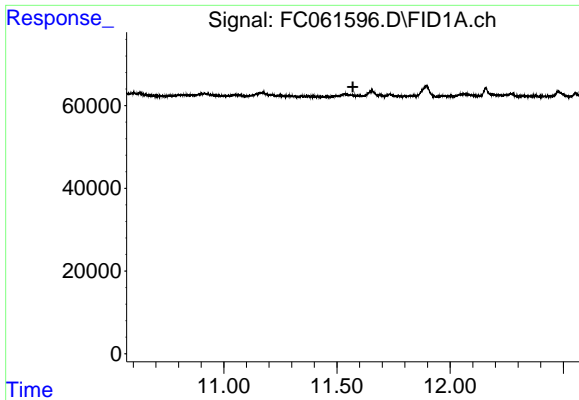
Data Path : Z:\pestpcbsrv\HPCHEM1\FID_C\Data\FC092222AL\
 Data File : FC061596.D
 Signal(s) : FID1A.ch
 Acq On : 22 Sep 2022 08:23
 Operator : YP/AJ
 Sample : MELC2
 Misc :
 ALS Vial : 1 Sample Multiplier: 1

Instrument :
 FID_C
 ClientSampleId :

Integration File: autoint1.e
 Quant Time: Sep 22 13:09:58 2022
 Quant Method : Z:\pestpcbsrv\HPCHEM1\FID_C\Method\Aliphatic EPH 092022.M
 Quant Title : GC Extractables
 QLast Update : Tue Sep 20 18:33:32 2022
 Response via : Initial Calibration
 Integrator: ChemStation

Volume Inj. : 1 ul
 Signal Phase : Rxi-1ms
 Signal Info : 20M x 0.18mm x 0.18um

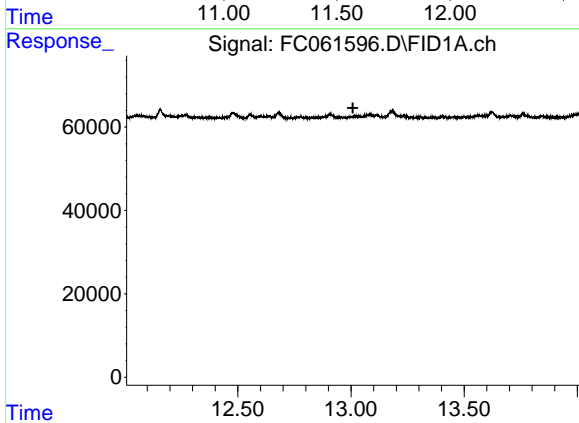




#9 ortho-Terphenyl (SURR)

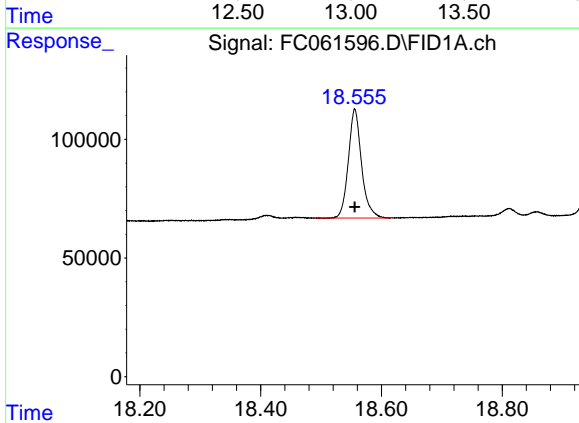
R.T.: 0.000 min
 Exp R.T.: 11.571 min
 Response: 0
 Conc: N.D.

Instrument :
 FID_C
 ClientSampleId :



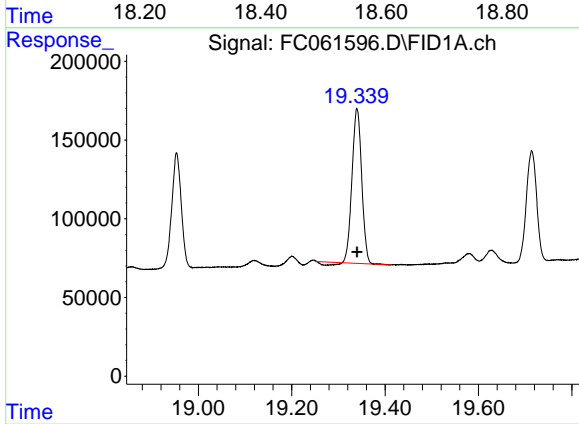
#12 1-chlorooctadecane (SURR)

R.T.: 0.000 min
 Exp R.T.: 13.008 min
 Response: 0
 Conc: N.D.



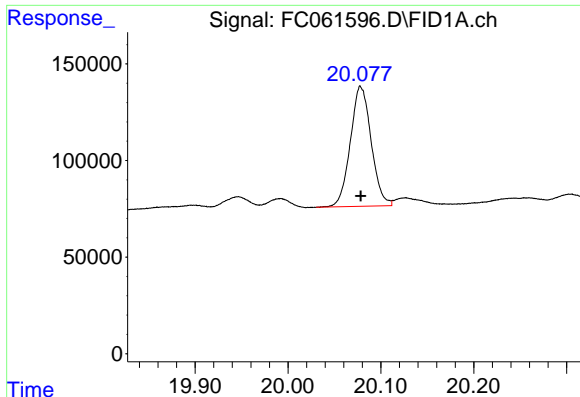
#18 n-Dotriacontane (C32)

R.T.: 18.556 min
 Delta R.T.: 0.000 min
 Response: 697313
 Conc: 4.61 ug/ml



#19 n-Tetratriacontane (C34)

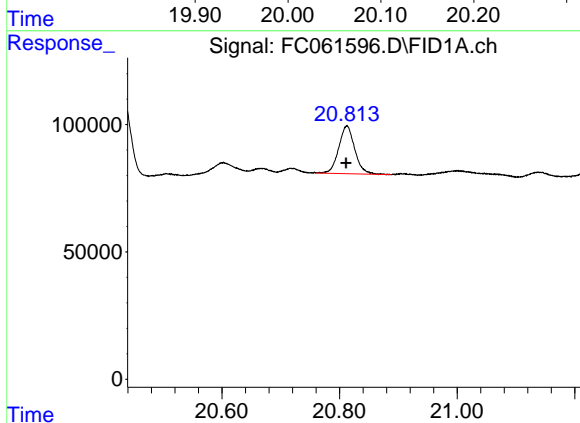
R.T.: 19.340 min
 Delta R.T.: 0.000 min
 Response: 1390650
 Conc: 9.81 ug/ml



#20 n-Hexatriacontane (C36)

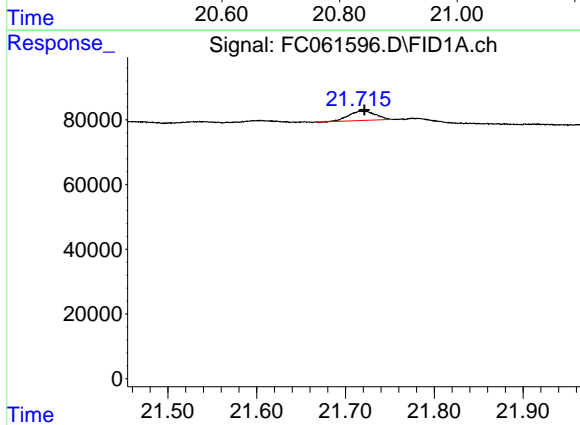
R.T.: 20.078 min
Delta R.T.: 0.000 min
Response: 967740
Conc: 7.01 ug/ml

Instrument :
FID_C
ClientSampleId :



#21 n-Octatriacontane (C38)

R.T.: 20.812 min
Delta R.T.: 0.000 min
Response: 353536
Conc: 2.73 ug/ml



#22 n-Tetracontane (C40)

R.T.: 21.720 min
Delta R.T.: -0.001 min
Response: 60782
Conc: 0.50 ug/ml