

Data Path : Z:\pestpcbsrv\HPCHEM1\FID_C\Data\FC092320AL\
 Data File : FC049758.D
 Signal(s) : FID1A.CH
 Acq On : 24 Sep 2020 12:11
 Operator : DD\AJ
 Sample : 20 PPM ALIPHATIC HC STD
 Misc :
 ALS Vial : 2 Sample Multiplier: 1

Instrument :
 FID_C
 ClientSampled :

Integration File: autoint1.e
 Quant Time: Sep 24 13:06:28 2020
 Quant Method : Z:\pestpcbsrv\HPCHEM1\FID_C\Method\Alaphatic EPH 090820.M
 Quant Title : GC Extractables
 QLast Update : Wed Sep 09 05:58:47 2020
 Response via : Initial Calibration
 Integrator: ChemStation 6890 Scale Mode: Large solvent peaks clipped

Volume Inj. : 1 ul
 Signal Phase : Rxi-1ms
 Signal Info : 20M x 0.18mm x 0.18um

| Compound | R.T. | Response | Conc Units |
|--------------------------------|--------|----------|--------------|
| ----- | | | |
| System Monitoring Compounds | | | |
| 9) S ortho-Terphenyl (SURR) | 11.662 | 2059303 | 17.923 ug/ml |
| Spiked Amount | 50.000 | Recovery | = 35.85% |
| 12) S 1-chlorooctadecane (S... | 13.095 | 1572164 | 17.650 ug/ml |
| Spiked Amount | 50.000 | Recovery | = 35.30% |
| Target Compounds | | | |
| 1) T n-Nonane (C9) | 3.398 | 2107385 | 20.371 ug/ml |
| 2) T n-Decane (C10) | 4.471 | 2124994 | 20.459 ug/ml |
| 3) T A~Naphthalene (C11.7) | 6.069 | 2269592 | 19.739 ug/ml |
| 4) T n-Dodecane (C12) | 6.496 | 2118525 | 20.042 ug/ml |
| 5) T A~2-methylnaphthalene... | 7.128 | 2265882 | 19.380 ug/ml |
| 6) T n-Tetradecane (C14) | 8.293 | 2052506 | 19.456 ug/ml |
| 7) T n-Hexadecane (C16) | 9.895 | 1958044 | 18.815 ug/ml |
| 8) T n-Octadecane (C18) | 11.339 | 1972504 | 18.354 ug/ml |
| 10) T n-Eicosane (C20) | 12.648 | 1923746 | 17.965 ug/ml |
| 11) T n-Heneicosane (C21) | 13.261 | 1891469 | 17.774 ug/ml |
| 13) T n-Docosane (C22) | 13.846 | 1880758 | 17.773 ug/ml |
| 14) T n-Tetracosane (C24) | 14.949 | 1853019 | 17.708 ug/ml |
| 15) T n-Hexacosane (C26) | 15.971 | 1846284 | 18.061 ug/ml |
| 16) T n-Octacosane (C28) | 16.920 | 1877029 | 18.677 ug/ml |
| 17) T n-Tricontane (C30) | 17.808 | 1898551 | 19.499 ug/ml |
| 18) T n-Dotriacontane (C32) | 18.637 | 1841202 | 20.376 ug/ml |
| 19) T n-Tetratriacontane (C34) | 19.421 | 1743764 | 20.370 ug/ml |
| 20) T n-Hexatriacontane (C36) | 20.160 | 1705549 | 21.170 ug/ml |
| 21) T n-Octatriacontane (C38) | 20.911 | 1676004 | 22.138 ug/ml |
| 22) T n-Tetracontane (C40) | 21.859 | 1629279 | 20.939 ug/ml |

(f)=RT Delta > 1/2 Window

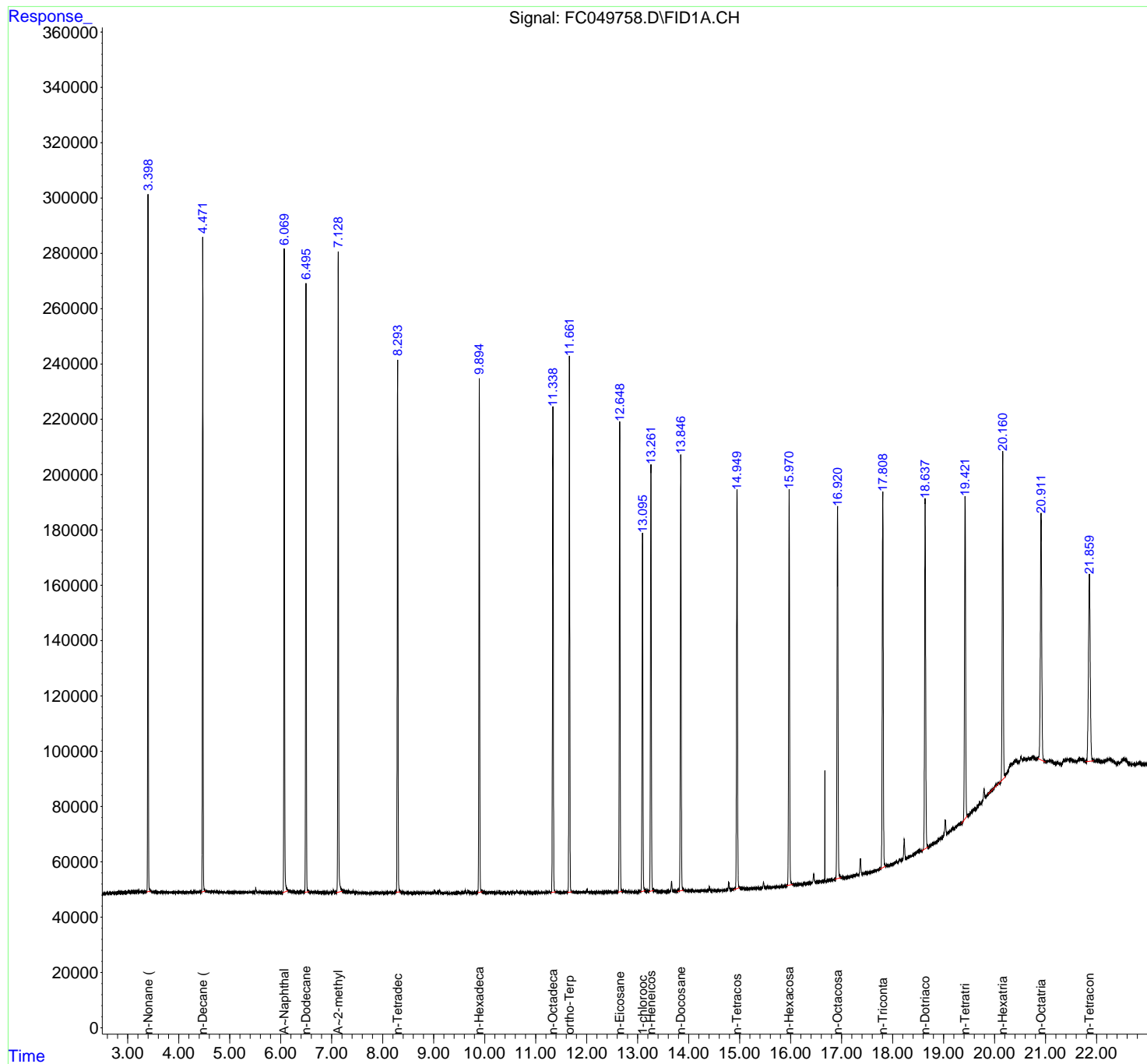
(m)=manual int.

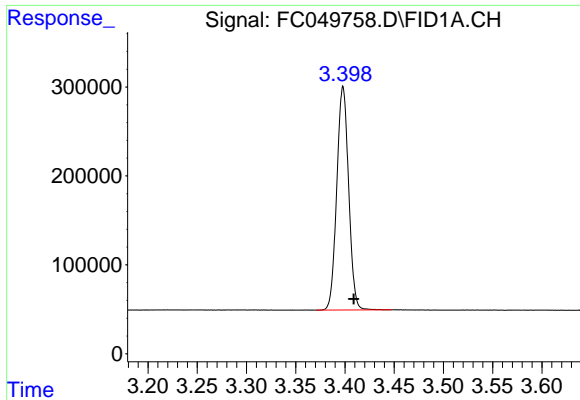
Data Path : Z:\pestpcbsrv\HPCHEM1\FID_C\Data\FC092320AL\
Data File : FC049758.D
Signal(s) : FID1A.CH
Acq On : 24 Sep 2020 12:11
Operator : DD\AJ
Sample : 20 PPM ALIPHATIC HC STD
Misc :
ALS Vial : 2 Sample Multiplier: 1

Instrument :
FID_C
ClientSampled :

Integration File: autoint1.e
Quant Time: Sep 24 13:06:28 2020
Quant Method : Z:\pestpcbsrv\HPCHEM1\FID_C\Method\Aliphatic EPH 090820.M
Quant Title : GC Extractables
QLast Update : Wed Sep 09 05:58:47 2020
Response via : Initial Calibration
Integrator: ChemStation 6890 Scale Mode: Large solvent peaks clipped

Volume Inj. : 1 ul
Signal Phase : Rxi-1ms
Signal Info : 20M x 0.18mm x 0.18um

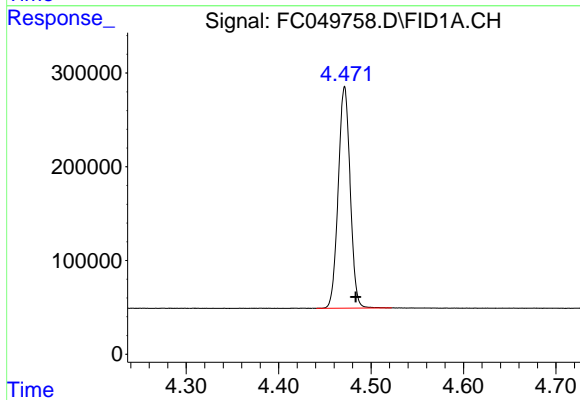




#1 n-Nonane (C9)

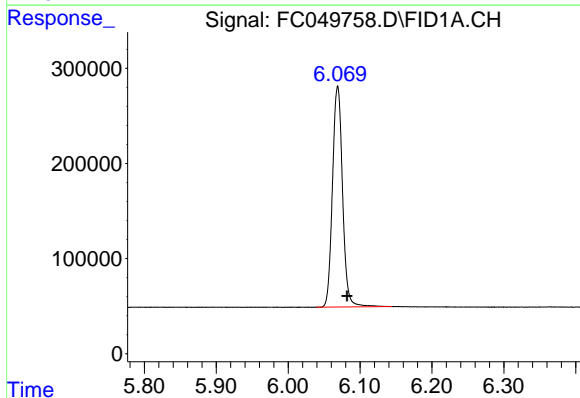
R.T.: 3.398 min
Delta R.T.: -0.011 min
Response: 2107385
Conc: 20.37 ug/ml

Instrument :
FID_C
ClientSampleId :



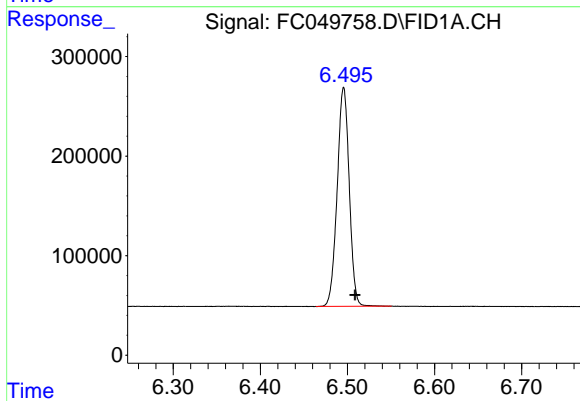
#2 n-Decane (C10)

R.T.: 4.471 min
Delta R.T.: -0.012 min
Response: 2124994
Conc: 20.46 ug/ml



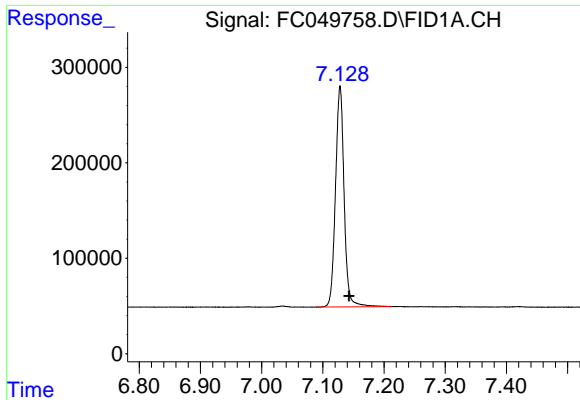
#3 A~Naphthalene (C11.7)

R.T.: 6.069 min
Delta R.T.: -0.013 min
Response: 2269592
Conc: 19.74 ug/ml



#4 n-Dodecane (C12)

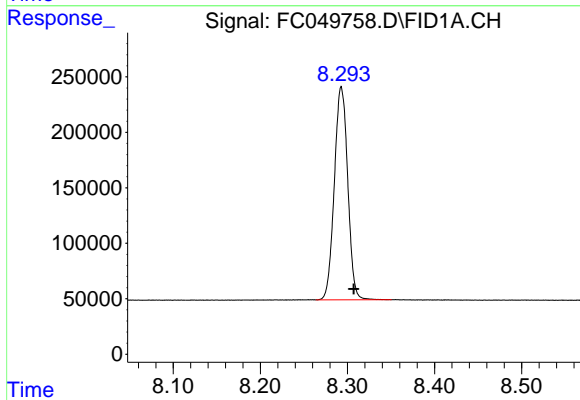
R.T.: 6.496 min
Delta R.T.: -0.013 min
Response: 2118525
Conc: 20.04 ug/ml



#5 A~2-methylnaphthalene (C12.89)

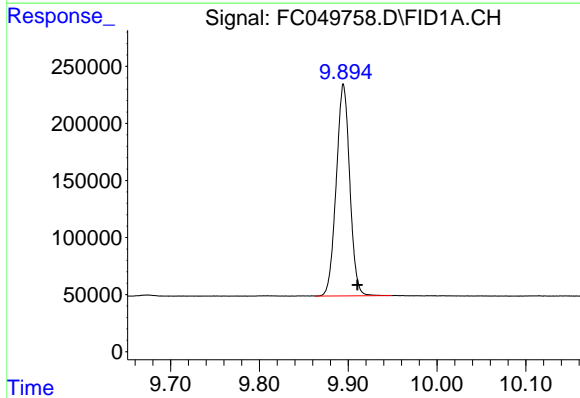
R.T.: 7.128 min
Delta R.T.: -0.014 min
Response: 2265882
Conc: 19.38 ug/ml

Instrument :
FID_C
ClientSampled :



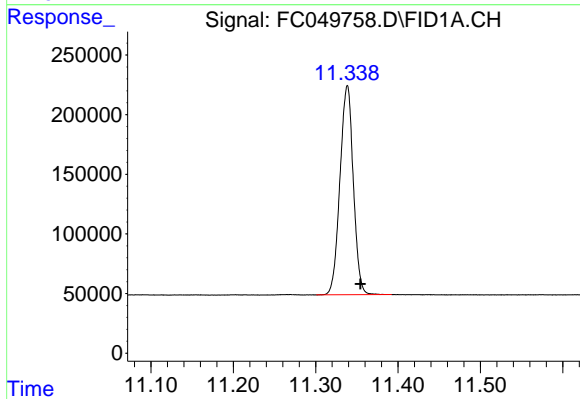
#6 n-Tetradecane (C14)

R.T.: 8.293 min
Delta R.T.: -0.014 min
Response: 2052506
Conc: 19.46 ug/ml



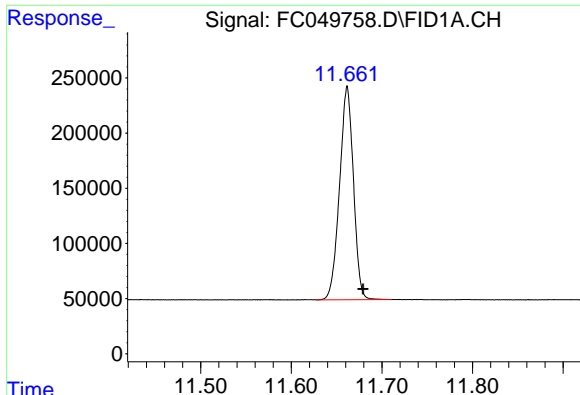
#7 n-Hexadecane (C16)

R.T.: 9.895 min
Delta R.T.: -0.015 min
Response: 1958044
Conc: 18.81 ug/ml



#8 n-Octadecane (C18)

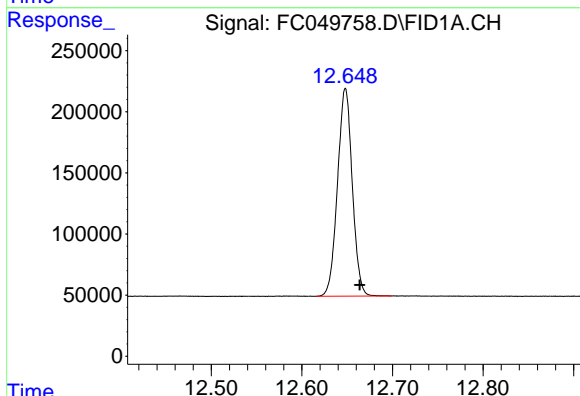
R.T.: 11.339 min
Delta R.T.: -0.016 min
Response: 1972504
Conc: 18.35 ug/ml



#9 ortho-Terphenyl (SURR)

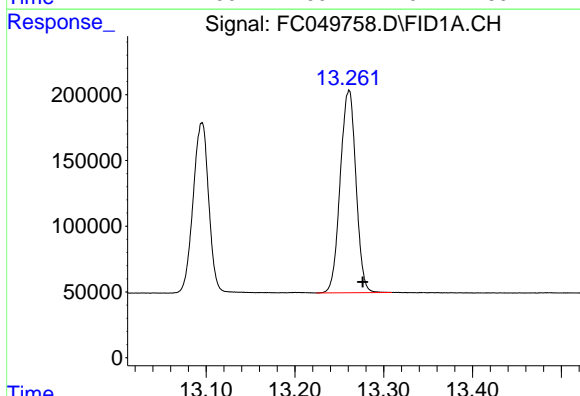
R.T.: 11.662 min
 Delta R.T.: -0.017 min
 Response: 2059303
 Conc: 17.92 ug/ml

Instrument :
 FID_C
 ClientSampled :



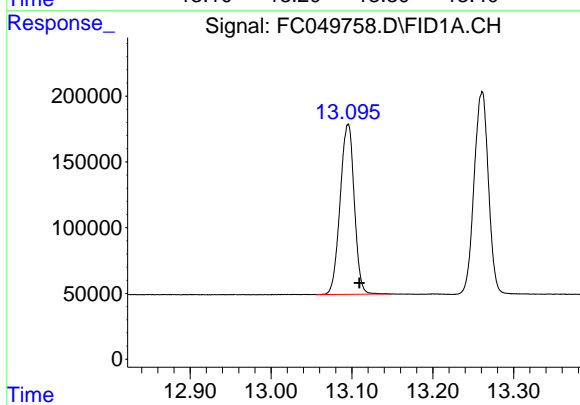
#10 n-Eicosane (C20)

R.T.: 12.648 min
 Delta R.T.: -0.016 min
 Response: 1923746
 Conc: 17.97 ug/ml



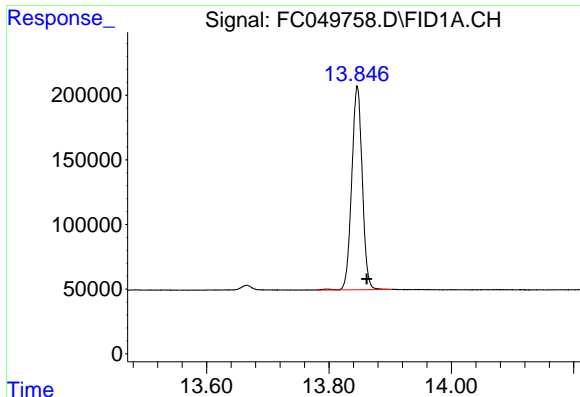
#11 n-Heneicosane (C21)

R.T.: 13.261 min
 Delta R.T.: -0.016 min
 Response: 1891469
 Conc: 17.77 ug/ml



#12 1-chlorooctadecane (SURR)

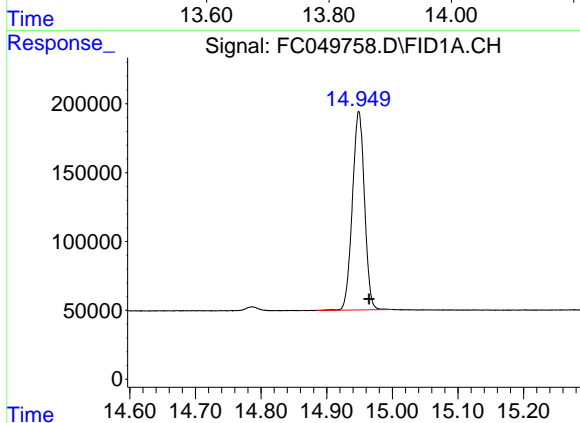
R.T.: 13.095 min
 Delta R.T.: -0.014 min
 Response: 1572164
 Conc: 17.65 ug/ml



#13 n-Docosane (C22)

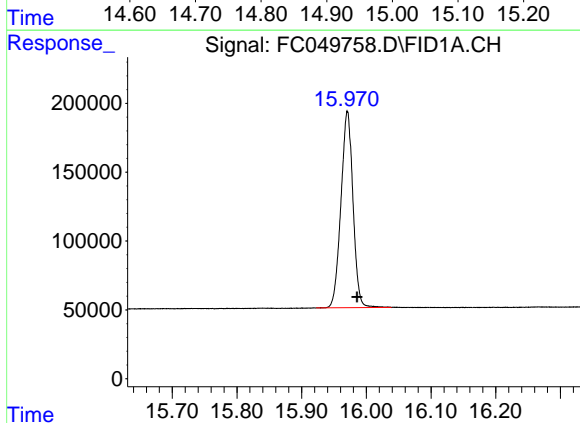
R.T.: 13.846 min
Delta R.T.: -0.015 min
Response: 1880758
Conc: 17.77 ug/ml

Instrument :
FID_C
ClientSampled :



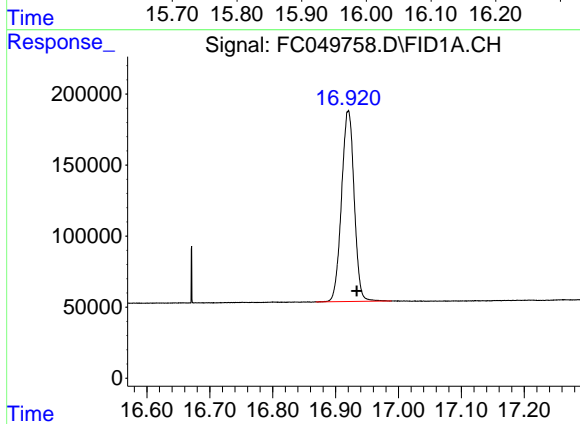
#14 n-Tetracosane (C24)

R.T.: 14.949 min
Delta R.T.: -0.015 min
Response: 1853019
Conc: 17.71 ug/ml



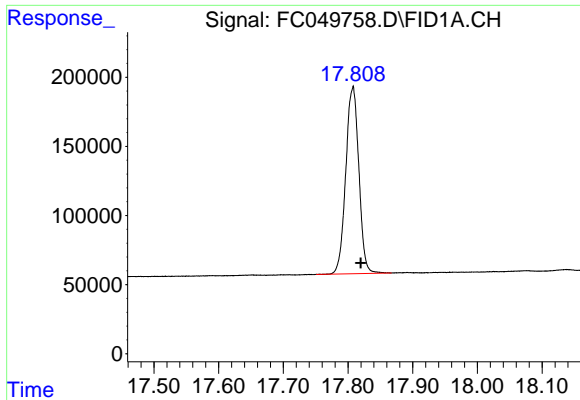
#15 n-Hexacosane (C26)

R.T.: 15.971 min
Delta R.T.: -0.015 min
Response: 1846284
Conc: 18.06 ug/ml



#16 n-Octacosane (C28)

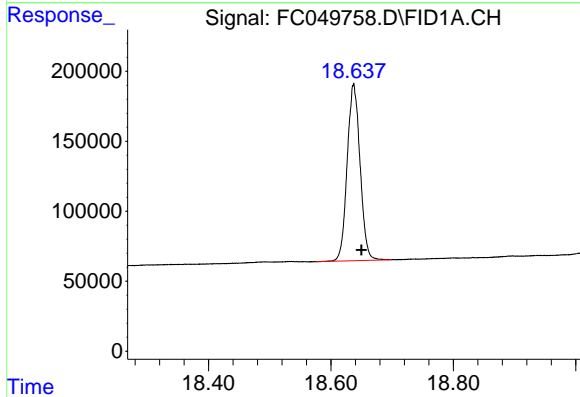
R.T.: 16.920 min
Delta R.T.: -0.013 min
Response: 1877029
Conc: 18.68 ug/ml



#17 n-Tricontane (C30)

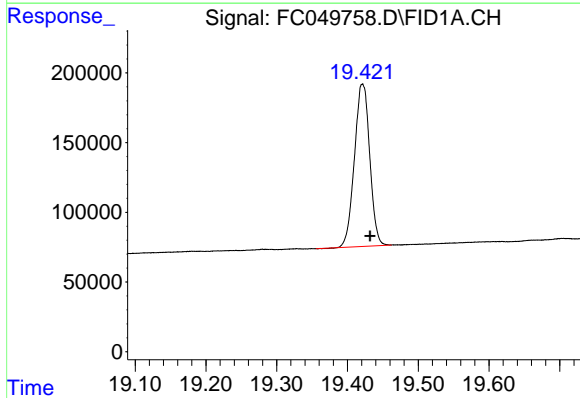
R.T.: 17.808 min
Delta R.T.: -0.012 min
Response: 1898551
Conc: 19.50 ug/ml

Instrument :
FID_C
ClientSampled :



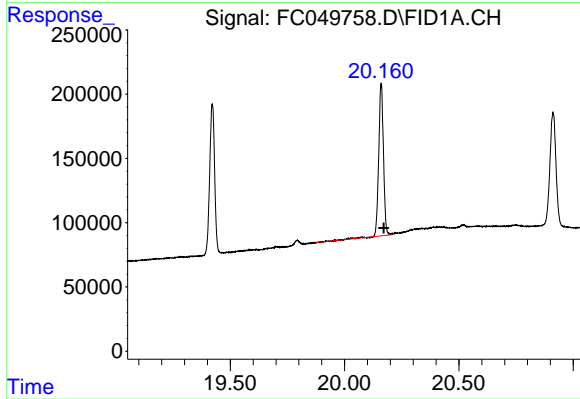
#18 n-Dotriacontane (C32)

R.T.: 18.637 min
Delta R.T.: -0.013 min
Response: 1841202
Conc: 20.38 ug/ml



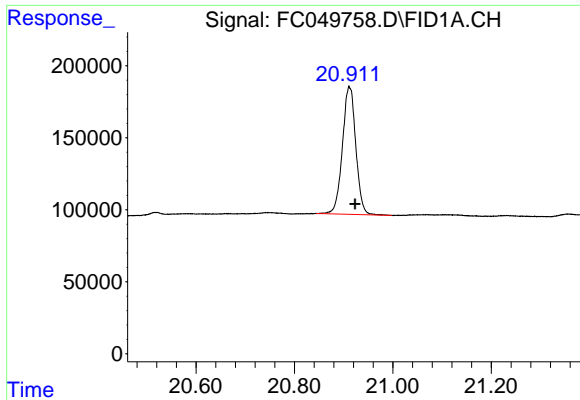
#19 n-Tetratriacontane (C34)

R.T.: 19.421 min
Delta R.T.: -0.011 min
Response: 1743764
Conc: 20.37 ug/ml



#20 n-Hexatriacontane (C36)

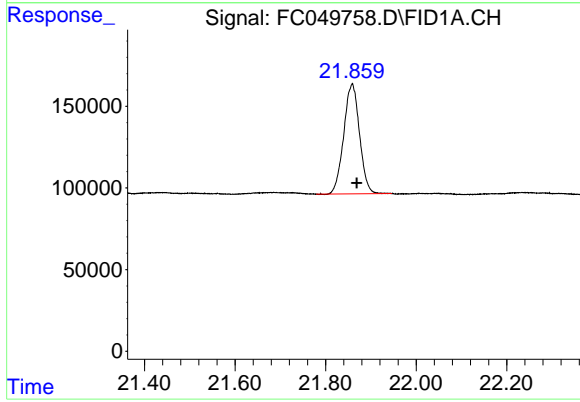
R.T.: 20.160 min
Delta R.T.: -0.011 min
Response: 1705549
Conc: 21.17 ug/ml



#21 n-Octatriacontane (C38)

R.T.: 20.911 min
Delta R.T.: -0.012 min
Response: 1676004
Conc: 22.14 ug/ml

Instrument :
FID_C
ClientSampleId :



#22 n-Tetracontane (C40)

R.T.: 21.859 min
Delta R.T.: -0.010 min
Response: 1629279
Conc: 20.94 ug/ml