

Data Path : Z:\pestpcbsrv\HPCHEM1\FID_C\Data\FC092421AL\
 Data File : FC055813.D
 Signal(s) : FID1A.CH
 Acq On : 24 Sep 2021 18:16
 Operator : AJ\MA
 Sample : M3916-04
 Misc :
 ALS Vial : 8 Sample Multiplier: 1

Integration File: autoint1.e
 Quant Time: Sep 24 23:08:49 2021
 Quant Method : Z:\pestpcbsrv\HPCHEM1\FID_C\Method\Aliphatic EPH 092021.M
 Quant Title : GC Extractables
 QLast Update : Tue Sep 21 03:14:48 2021
 Response via : Initial Calibration
 Integrator: ChemStation 6890 Scale Mode: Large solvent peaks clipped

Volume Inj. : 1 ul
 Signal Phase : Rxi-1ms
 Signal Info : 20M x 0.18mm x 0.18um

Compound	R.T.	Response	Conc Units

System Monitoring Compounds			
9) S ortho-Terphenyl (SURR)	11.649	4757515	37.674 ug/ml
Spiked Amount	50.000	Recovery	= 75.35%
12) S 1-chlorooctadecane (S...	13.082	3794250	38.400 ug/ml
Spiked Amount	50.000	Recovery	= 76.80%
Target Compounds			
14) T n-Tetracosane (C24)	14.918	383643	3.242 ug/ml

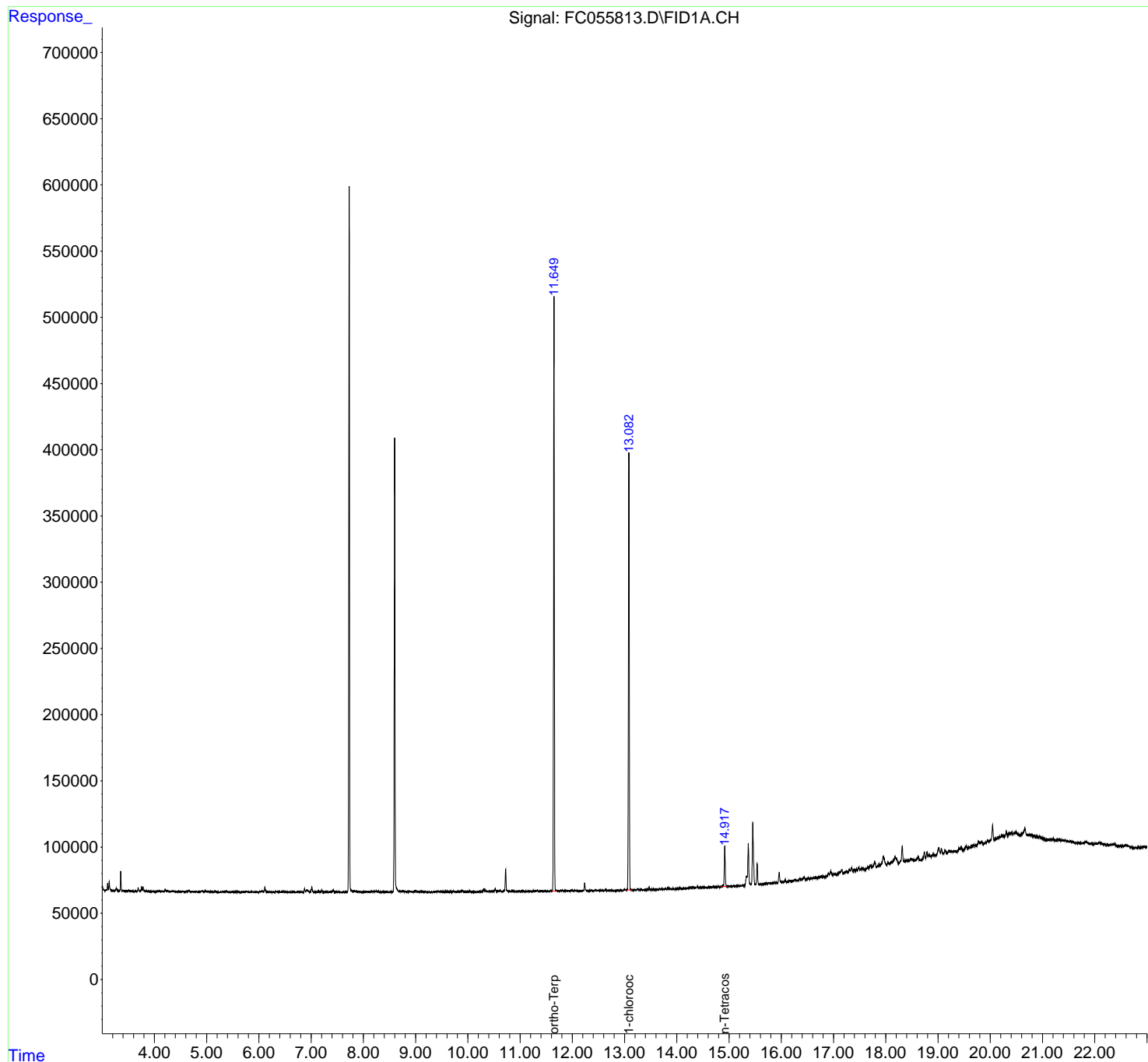
(f)=RT Delta > 1/2 Window

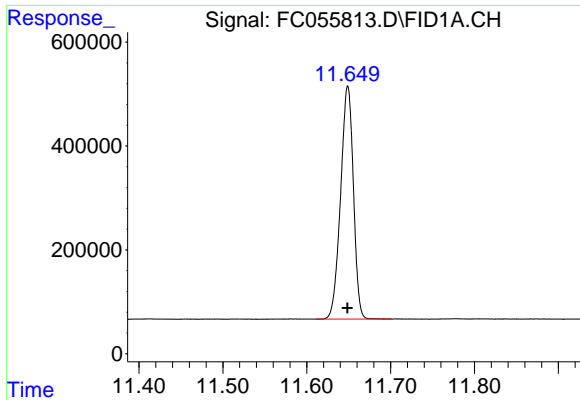
(m)=manual int.

Data Path : Z:\pestpcbsrv\HPCHEM1\FID_C\Data\FC092421AL\
 Data File : FC055813.D
 Signal(s) : FID1A.CH
 Acq On : 24 Sep 2021 18:16
 Operator : AJ\MA
 Sample : M3916-04
 Misc :
 ALS Vial : 8 Sample Multiplier: 1

Integration File: autoint1.e
 Quant Time: Sep 24 23:08:49 2021
 Quant Method : Z:\pestpcbsrv\HPCHEM1\FID_C\Method\Aliphatic EPH 092021.M
 Quant Title : GC Extractables
 QLast Update : Tue Sep 21 03:14:48 2021
 Response via : Initial Calibration
 Integrator: ChemStation 6890 Scale Mode: Large solvent peaks clipped

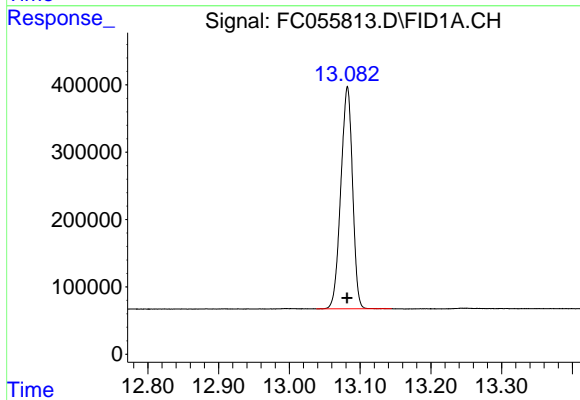
Volume Inj. : 1 ul
 Signal Phase : Rxi-1ms
 Signal Info : 20M x 0.18mm x 0.18um





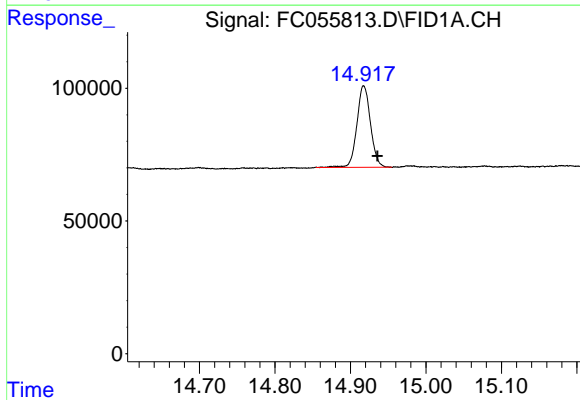
#9 ortho-Terphenyl (SURR)

R.T.: 11.649 min
Delta R.T.: 0.000 min
Response: 4757515
Conc: 37.67 ug/ml



#12 1-chlorooctadecane (SURR)

R.T.: 13.082 min
Delta R.T.: 0.000 min
Response: 3794250
Conc: 38.40 ug/ml



#14 n-Tetracosane (C24)

R.T.: 14.918 min
Delta R.T.: -0.018 min
Response: 383643
Conc: 3.24 ug/ml