

Data Path : Z:\pestpcbsrv\HPCHEM1\FID_C\Data\FC092519AL\
Data File : FC043610.D
Signal(s) : FID1A.CH
Acq On : 25 Sep 2019 17:50
Operator : DD\AJ
Sample : I.BLK
Misc :
ALS Vial : 2 Sample Multiplier: 1

Integration File: autoint1.e
Quant Time: Sep 26 05:19:15 2019
Quant Method : Z:\pestpcbsrv\HPCHEM1\FID_C\Method\Alaphatic EPH 092519.M
Quant Title : GC Extractables
QLast Update : Thu Sep 26 05:18:24 2019
Response via : Initial Calibration
Integrator: ChemStation 6890 Scale Mode: Large solvent peaks clipped

Volume Inj. : 1 ul
Signal Phase : Rxi-1ms
Signal Info : 20M x 0.18mm x 0.18um

Compound	R.T.	Response	Conc Units

System Monitoring Compounds			
Target Compounds			

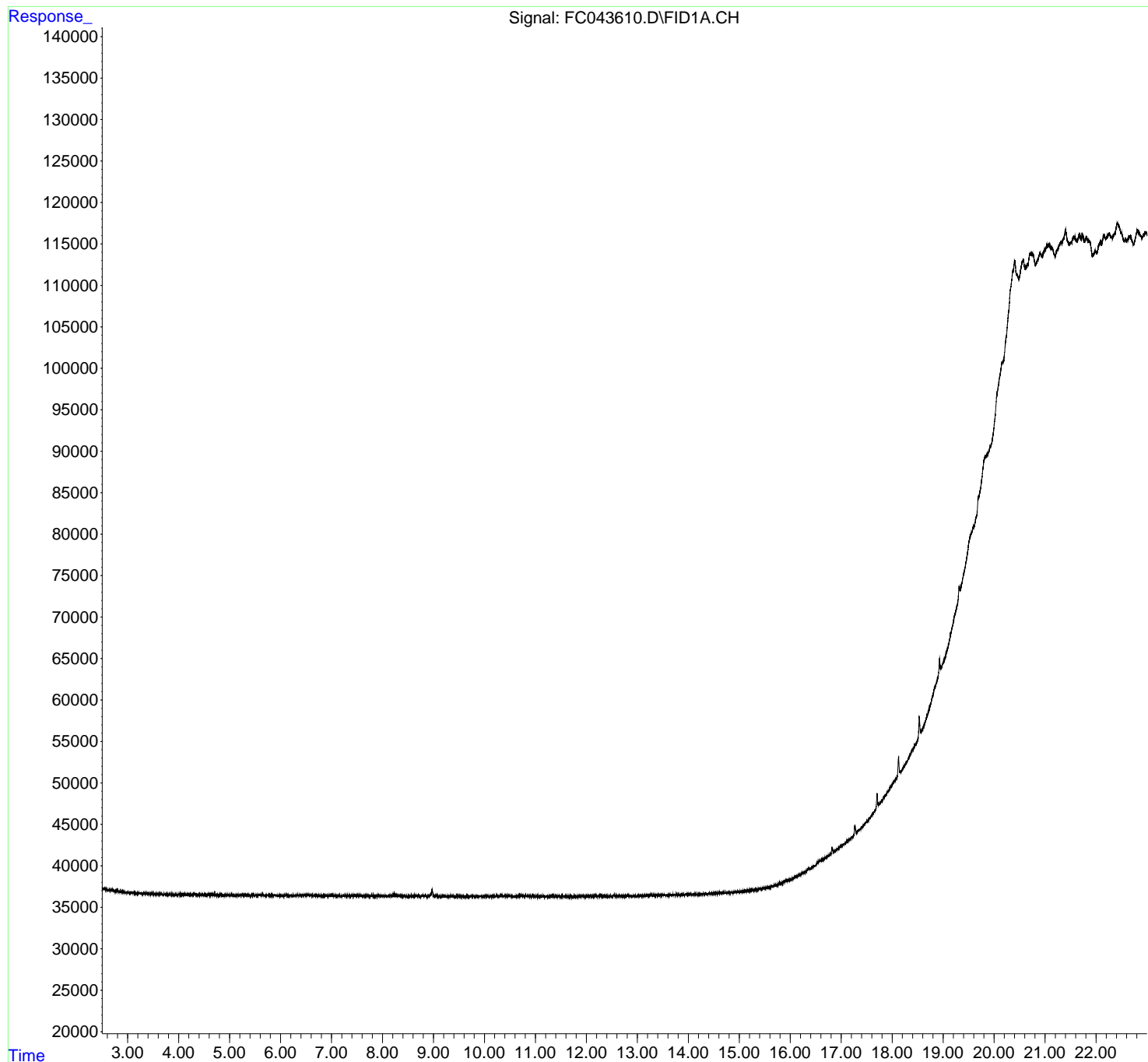
(f)=RT Delta > 1/2 Window

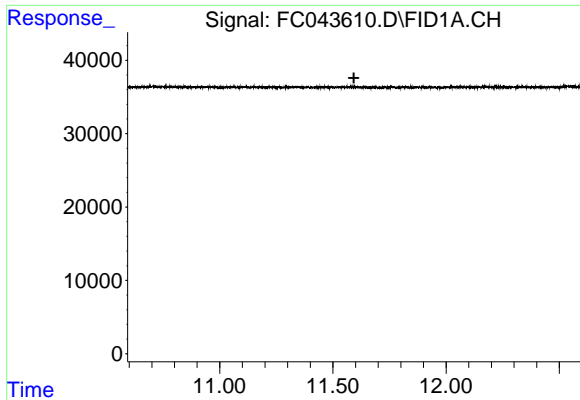
(m)=manual int.

Data Path : Z:\pestpcbsrv\HPCHEM1\FID_C\Data\FC092519AL\
Data File : FC043610.D
Signal(s) : FID1A.CH
Acq On : 25 Sep 2019 17:50
Operator : DD\AJ
Sample : I.BLK
Misc :
ALS Vial : 2 Sample Multiplier: 1

Integration File: autoint1.e
Quant Time: Sep 26 05:19:15 2019
Quant Method : Z:\pestpcbsrv\HPCHEM1\FID_C\Method\Alaphatic EPH 092519.M
Quant Title : GC Extractables
QLast Update : Thu Sep 26 05:18:24 2019
Response via : Initial Calibration
Integrator: ChemStation 6890 Scale Mode: Large solvent peaks clipped

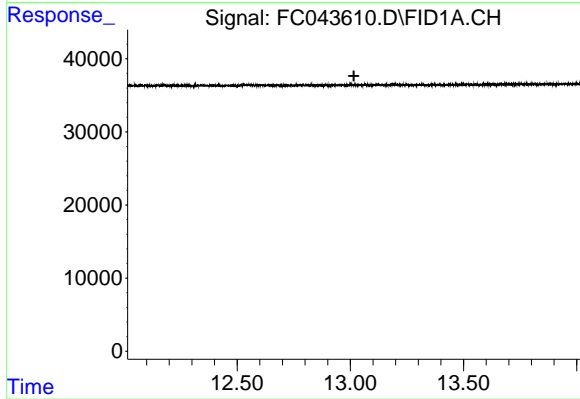
Volume Inj. : 1 ul
Signal Phase : Rxi-1ms
Signal Info : 20M x 0.18mm x 0.18um





#9 ortho-Terphenyl (SURR)

R.T.: 0.000 min
Exp R.T. : 11.593 min
Response: 0
Conc: N.D.



#12 1-chlorooctadecane (SURR)

R.T.: 0.000 min
Exp R.T. : 13.016 min
Response: 0
Conc: N.D.