

Data Path : Z:\pestpcbsrv\HPCHEM1\FID_C\Data\FC092519AL\
 Data File : FC043625.D
 Signal(s) : FID1A.CH
 Acq On : 26 Sep 2019 3:05
 Operator : DD\AJ
 Sample : K4664-11D
 Misc :
 ALS Vial : 17 Sample Multiplier: 1

Integration File: autoint1.e
 Quant Time: Sep 26 05:21:12 2019
 Quant Method : Z:\pestpcbsrv\HPCHEM1\FID_C\Method\Alaphatic EPH 092519.M
 Quant Title : GC Extractables
 QLast Update : Thu Sep 26 05:18:24 2019
 Response via : Initial Calibration
 Integrator: ChemStation 6890 Scale Mode: Large solvent peaks clipped

Volume Inj. : 1 ul
 Signal Phase : Rxi-1ms
 Signal Info : 20M x 0.18mm x 0.18um

Compound	R.T.	Response	Conc Units

System Monitoring Compounds			
9) S ortho-Terphenyl (SURR)	11.595	6420077	42.298 ug/ml
Spiked Amount	50.000	Recovery	= 84.60%
12) S 1-chlorooctadecane (S...	13.016	5183742	43.722 ug/ml
Spiked Amount	50.000	Recovery	= 87.44%
Target Compounds			
14) T n-Tetracosane (C24)	14.872	559339	3.896 ug/ml
16) T n-Octacosane (C28)	16.775	257584	1.817 ug/ml

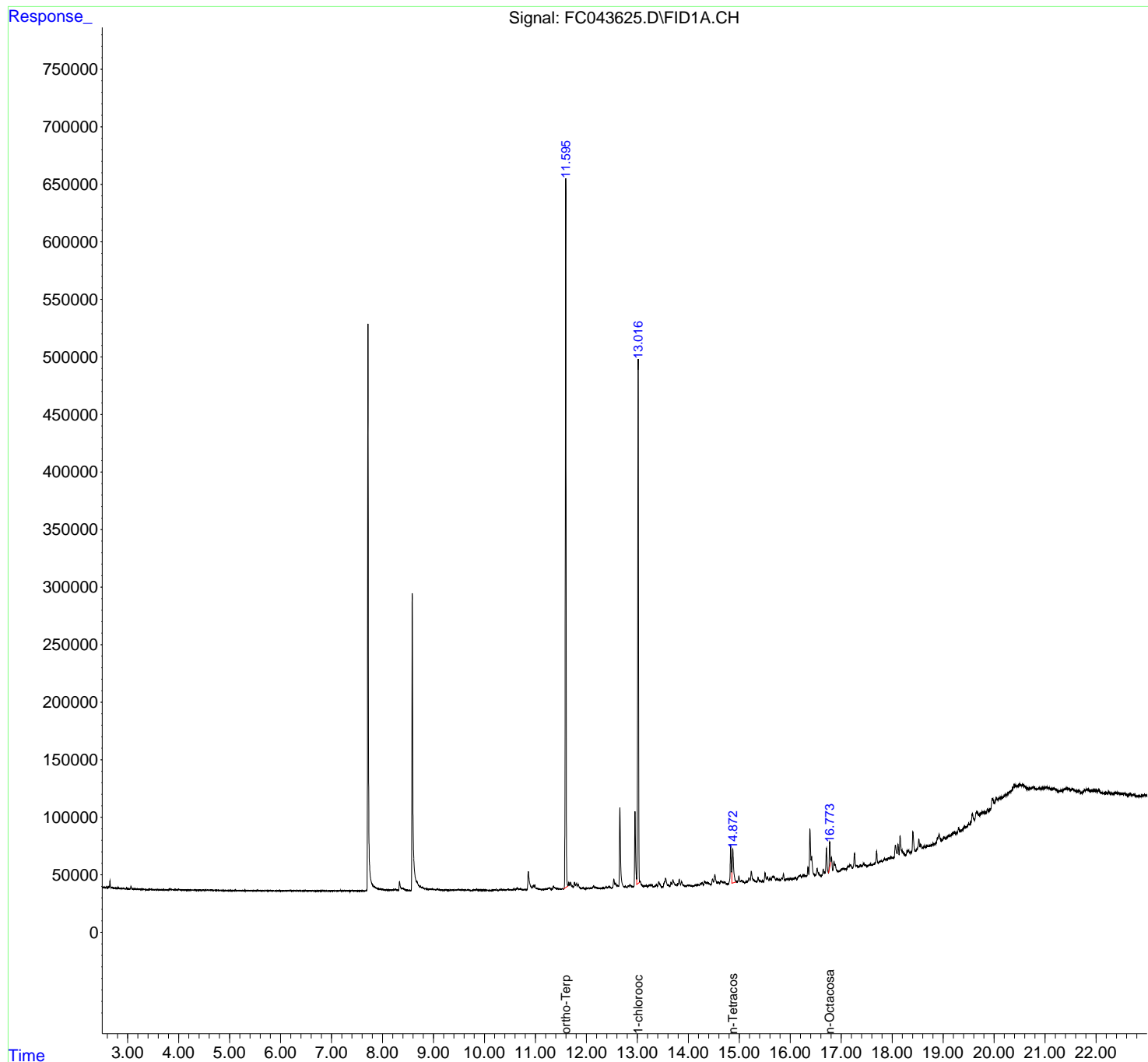
(f)=RT Delta > 1/2 Window

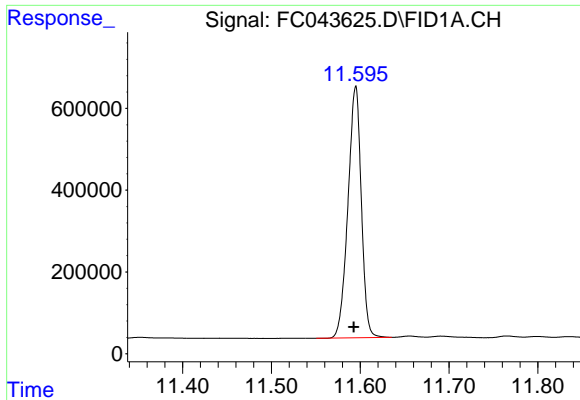
(m)=manual int.

Data Path : Z:\pestpcbsrv\HPCHEM1\FID_C\Data\FC092519AL\
Data File : FC043625.D
Signal(s) : FID1A.CH
Acq On : 26 Sep 2019 3:05
Operator : DD\AJ
Sample : K4664-11D
Misc :
ALS Vial : 17 Sample Multiplier: 1

Integration File: autoint1.e
Quant Time: Sep 26 05:21:12 2019
Quant Method : Z:\pestpcbsrv\HPCHEM1\FID_C\Method\Alaphatic EPH 092519.M
Quant Title : GC Extractables
QLast Update : Thu Sep 26 05:18:24 2019
Response via : Initial Calibration
Integrator: ChemStation 6890 Scale Mode: Large solvent peaks clipped

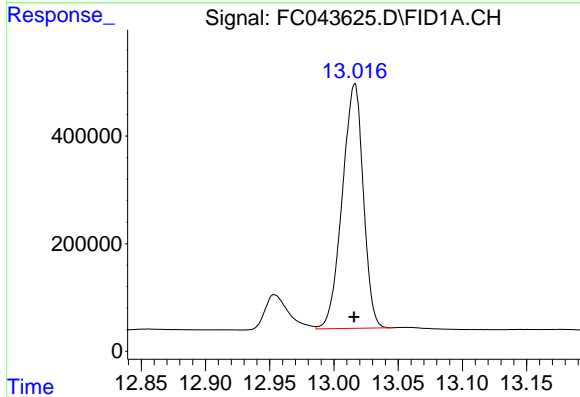
Volume Inj. : 1 ul
Signal Phase : Rxi-1ms
Signal Info : 20M x 0.18mm x 0.18um





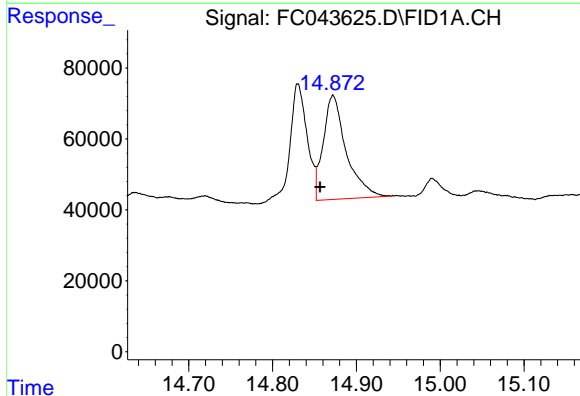
#9 ortho-Terphenyl (SURR)

R.T.: 11.595 min
Delta R.T.: 0.002 min
Response: 6420077
Conc: 42.30 ug/ml



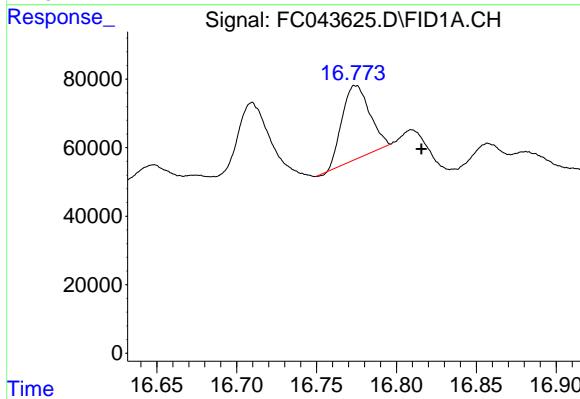
#12 1-chlorooctadecane (SURR)

R.T.: 13.016 min
Delta R.T.: 0.000 min
Response: 5183742
Conc: 43.72 ug/ml



#14 n-Tetracosane (C24)

R.T.: 14.872 min
Delta R.T.: 0.016 min
Response: 559339
Conc: 3.90 ug/ml



#16 n-Octacosane (C28)

R.T.: 16.775 min
Delta R.T.: -0.041 min
Response: 257584
Conc: 1.82 ug/ml