

Data Path : Z:\pestpcbsrv\HPCHEM1\FID\_C\Data\FC092618AL\  
Data File : FC036517.D  
Signal(s) : FID1A.CH  
Acq On : 26 Sep 2018 19:46  
Operator : AJ\SJ  
Sample : I.BLK  
Misc :  
ALS Vial : 1 Sample Multiplier: 1

Integration File: autoint1.e  
Quant Time: Sep 27 03:28:45 2018  
Quant Method : Z:\PESTPCBSRV\HPCHEM1\FID\_C\Method\Alaphatic EPH 092118.M  
Quant Title : GC Extractables  
QLast Update : Fri Sep 21 15:20:52 2018  
Response via : Initial Calibration  
Integrator: ChemStation 6890 Scale Mode: Large solvent peaks clipped

Volume Inj. : 1 ul  
Signal Phase : Rxi-lms  
Signal Info : 20M x 0.18mm x 0.18um

Compound	R.T.	Response	Conc Units
-----			
System Monitoring Compounds			
Target Compounds			
-----			

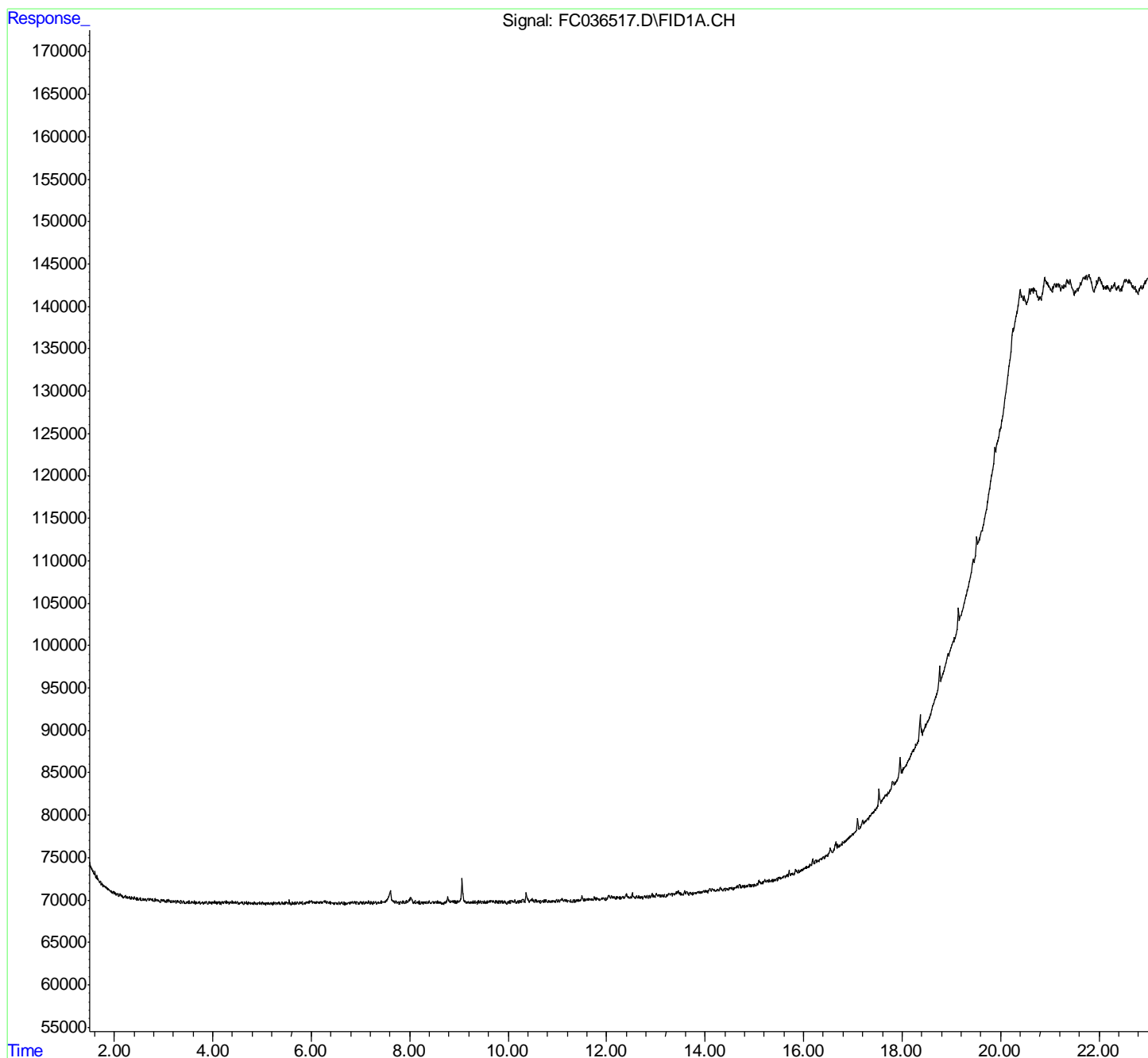
(f)=RT Delta > 1/2 Window

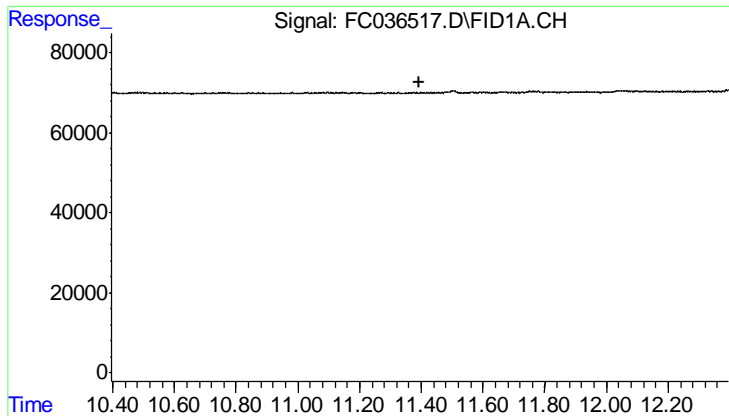
(m)=manual int.

Data Path : Z:\pestpcbsrv\HPCHEM1\FID\_C\Data\FC092618AL\  
Data File : FC036517.D  
Signal(s) : FID1A.CH  
Acq On : 26 Sep 2018 19:46  
Operator : AJ\SJ  
Sample : I.BLK  
Misc :  
ALS Vial : 1 Sample Multiplier: 1

Integration File: autoint1.e  
Quant Time: Sep 27 03:28:45 2018  
Quant Method : Z:\PESTPCBSRV\HPCHEM1\FID\_C\Method\Alaphatic EPH 092118.M  
Quant Title : GC Extractables  
QLast Update : Fri Sep 21 15:20:52 2018  
Response via : Initial Calibration  
Integrator: ChemStation 6890 Scale Mode: Large solvent peaks clipped

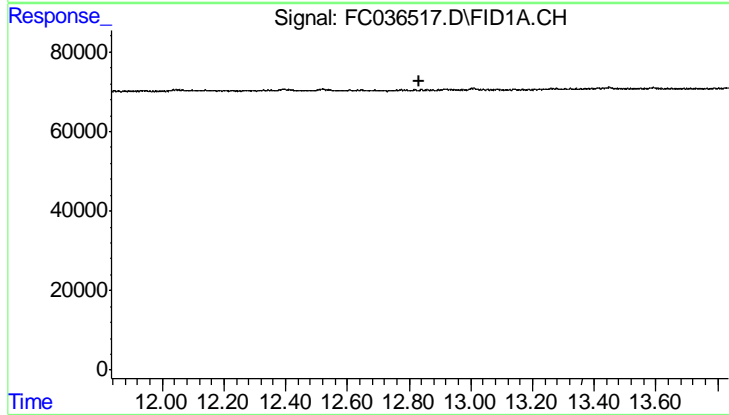
Volume Inj. : 1 ul  
Signal Phase : Rxi-lms  
Signal Info : 20M x 0.18mm x 0.18um





#9 ortho-Terphenyl (SURR)

R.T.: 0.000 min  
Exp R.T. : 11.395 min  
Response: 0  
Conc: N.D.



#12 1-chlorooctadecane (SURR)

R.T.: 0.000 min  
Exp R.T. : 12.835 min  
Response: 0  
Conc: N.D.