

Data Path : Z:\pestpcbsrv\HPCHEM1\FID\_C\Data\FC092618AL\  
 Data File : FC036536.D  
 Signal(s) : FID1A.CH  
 Acq On : 27 Sep 2018 6:59  
 Operator : AJ\SJ  
 Sample : J5081-14  
 Misc :  
 ALS Vial : 32 Sample Multiplier: 1

Integration File: autoint1.e  
 Quant Time: Sep 27 10:23:30 2018  
 Quant Method : Z:\PESTPCBSRV\HPCHEM1\FID\_C\Method\Alaphatic EPH 092118.M  
 Quant Title : GC Extractables  
 QLast Update : Fri Sep 21 15:20:52 2018  
 Response via : Initial Calibration  
 Integrator: ChemStation 6890 Scale Mode: Large solvent peaks clipped

Volume Inj. : 1 ul  
 Signal Phase : Rxi-lms  
 Signal Info : 20M x 0.18mm x 0.18um

Compound	R.T.	Response	Conc Units
-----			
System Monitoring Compounds			
12) S 1-chlorooctadecane (S...	12.831	4343037	46.125 ug/ml
Spiked Amount 50.000		Recovery =	92.25%
Target Compounds			
1) T n-Nonane (C9)	3.218	24304880	272.755 ug/ml
2) T n-Decane (C10)	4.253	4776825	53.136 ug/ml
3) T A~Naphthalene (C11.7)	5.832	8037059	80.184 ug/ml
4) T n-Dodecane (C12)	6.298	8813896	94.575 ug/ml
5) T A~2-methylnaphthalene...	6.884	6856385	68.197 ug/ml
6) T n-Tetradecane (C14)	8.105	357191	3.652 ug/ml
17) T n-Tricontane (C30)	17.525	233174	2.004 ug/ml
-----			

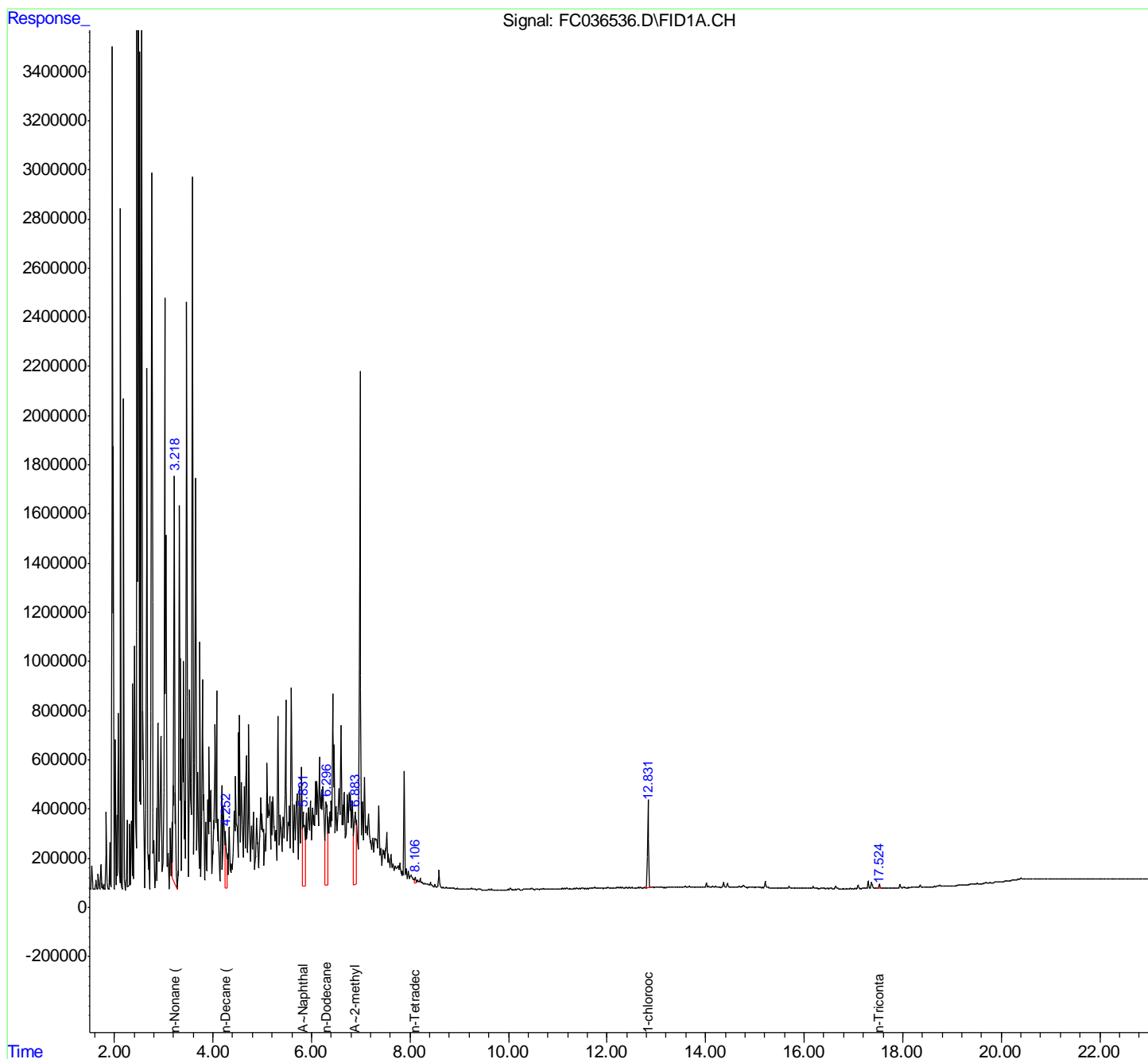
(f)=RT Delta > 1/2 Window

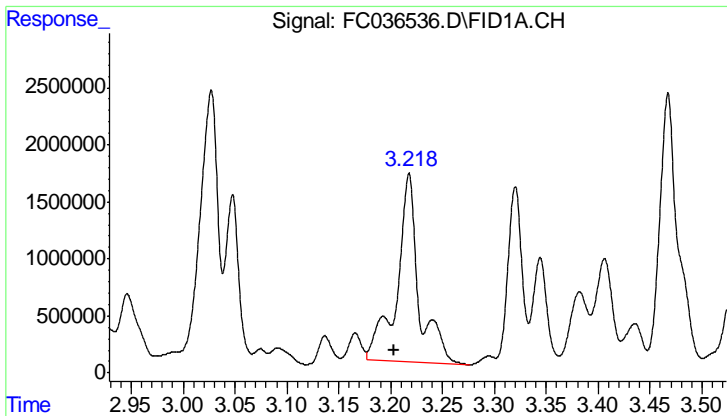
(m)=manual int.

Data Path : Z:\pestpcbsrv\HPCHEM1\FID\_C\Data\FC092618AL\  
 Data File : FC036536.D  
 Signal(s) : FID1A.CH  
 Acq On : 27 Sep 2018 6:59  
 Operator : AJ\SJ  
 Sample : J5081-14  
 Misc :  
 ALS Vial : 32 Sample Multiplier: 1

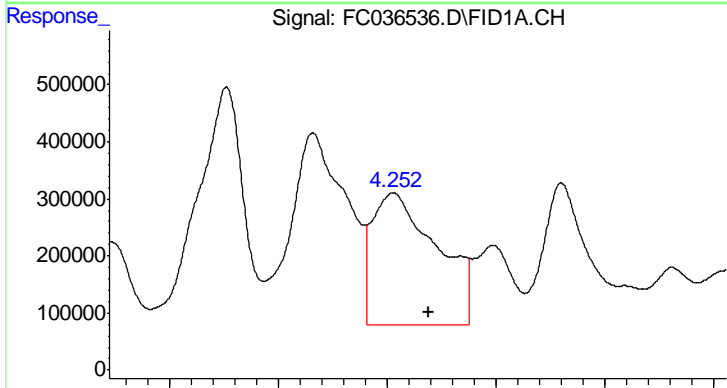
Integration File: autoint1.e  
 Quant Time: Sep 27 10:23:30 2018  
 Quant Method : Z:\PESTPCBSRV\HPCHEM1\FID\_C\Method\Alaphatic EPH 092118.M  
 Quant Title : GC Extractables  
 QLast Update : Fri Sep 21 15:20:52 2018  
 Response via : Initial Calibration  
 Integrator: ChemStation 6890 Scale Mode: Large solvent peaks clipped

Volume Inj. : 1 ul  
 Signal Phase : Rxi-lms  
 Signal Info : 20M x 0.18mm x 0.18um

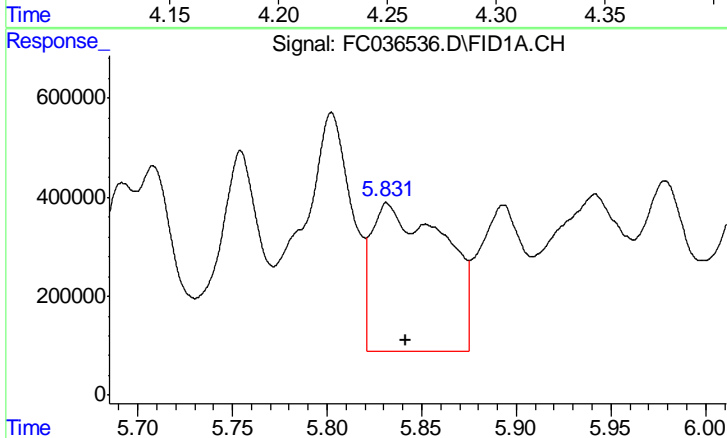




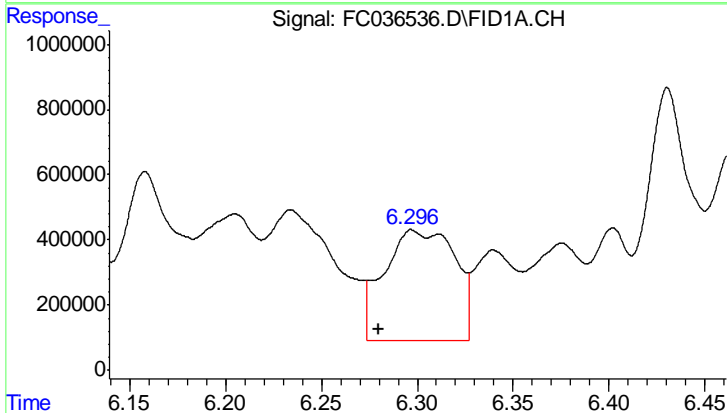
#1 n-Nonane (C9)  
R.T.: 3.218 min  
Delta R.T.: 0.015 min  
Response: 24304880  
Conc: 272.75 ug/ml



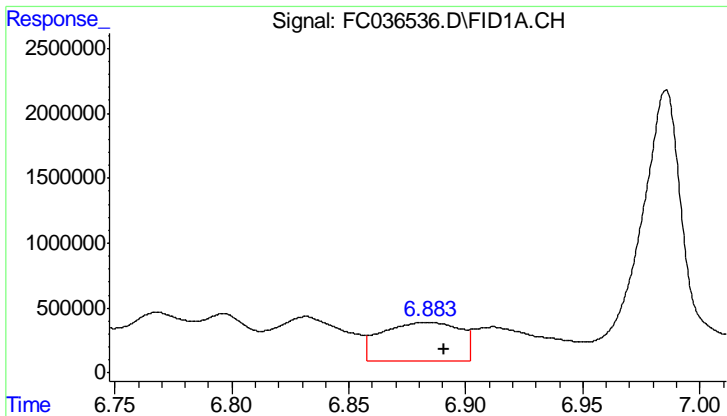
#2 n-Decane (C10)  
R.T.: 4.253 min  
Delta R.T.: -0.016 min  
Response: 4776825  
Conc: 53.14 ug/ml



#3 A~Naphthalene (C11.7)  
R.T.: 5.832 min  
Delta R.T.: -0.010 min  
Response: 8037059  
Conc: 80.18 ug/ml

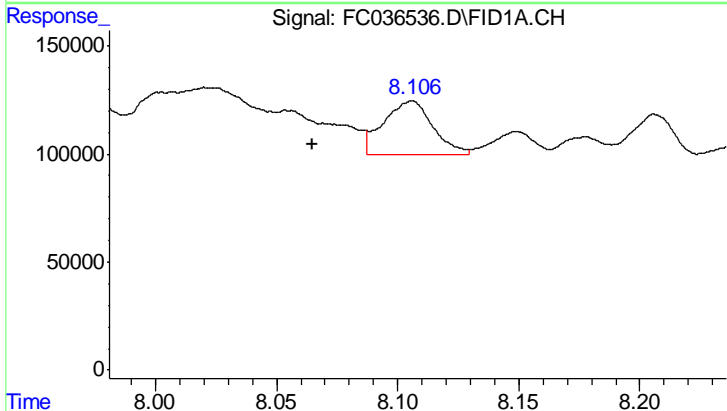


#4 n-Dodecane (C12)  
R.T.: 6.298 min  
Delta R.T.: 0.018 min  
Response: 8813896  
Conc: 94.57 ug/ml



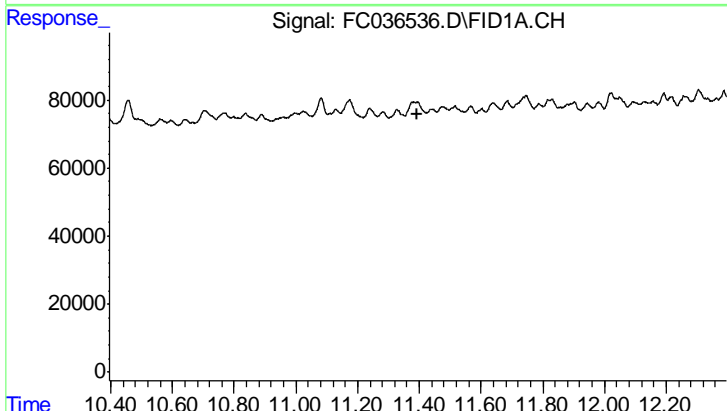
#5 A~2-methylnaphthalene (C12.89)

R.T.: 6.884 min  
 Delta R.T.: -0.007 min  
 Response: 6856385  
 Conc: 68.20 ug/ml



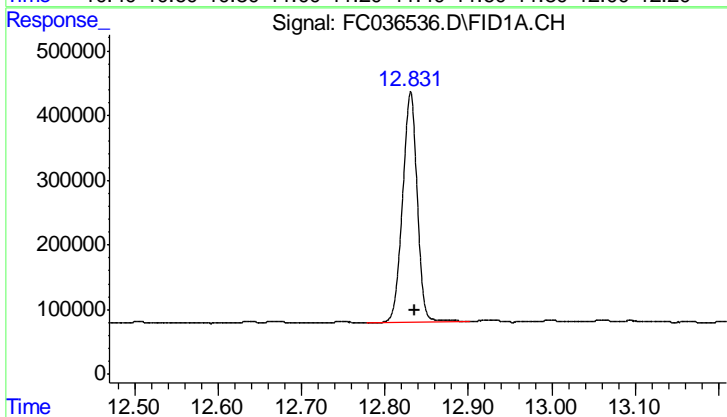
#6 n-Tetradecane (C14)

R.T.: 8.105 min  
 Delta R.T.: 0.040 min  
 Response: 357191  
 Conc: 3.65 ug/ml



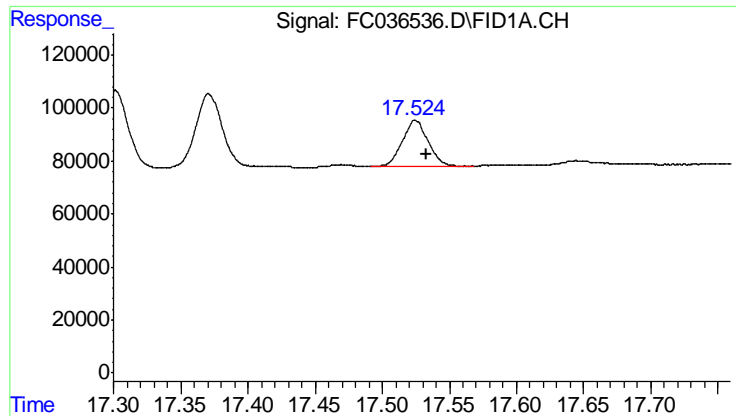
#9 ortho-Terphenyl (SURR)

R.T.: 0.000 min  
 Exp R.T.: 11.395 min  
 Response: 0  
 Conc: N.D.



#12 1-chlorooctadecane (SURR)

R.T.: 12.831 min  
 Delta R.T.: -0.004 min  
 Response: 4343037  
 Conc: 46.12 ug/ml



#17 n-Tricontane (C30)

R.T.: 17.525 min  
Delta R.T.: -0.008 min  
Response: 233174  
Conc: 2.00 ug/ml