

Data Path : Z:\pestpcbsrv\HPCHEM1\FID_C\Data\FC092622AL\
 Data File : FC061614.D
 Signal(s) : FID1A.ch
 Acq On : 26 Sep 2022 13:08
 Operator : YP/AJ
 Sample : N4765-02DL 2X
 Misc :
 ALS Vial : 6 Sample Multiplier: 1

Instrument :
 FID_C
 ClientSampleId :

Integration File: autoint1.e
 Quant Time: Sep 27 06:45:26 2022
 Quant Method : Z:\pestpcbsrv\HPCHEM1\FID_C\Method\Aliphatic EPH 092022.M
 Quant Title : GC Extractables
 QLast Update : Tue Sep 20 18:33:32 2022
 Response via : Initial Calibration
 Integrator: ChemStation

Volume Inj. : 1 ul
 Signal Phase : Rxi-1ms
 Signal Info : 20M x 0.18mm x 0.18um

Compound	R.T.	Response	Conc Units

System Monitoring Compounds			
9) S ortho-Terphenyl (SURR)	11.569	2668432	15.614 ug/ml
Spiked Amount	50.000	Recovery =	31.23%
12) S 1-chlorooctadecane (S...	13.007	2226567	16.299 ug/ml
Spiked Amount	50.000	Recovery =	32.60%
Target Compounds			
3) T A~Naphthalene (C11.7)	6.037f	72104	0.435 ug/ml
6) T n-Tetradecane (C14)	8.158f	28162	0.185 ug/ml
8) T n-Octadecane (C18)	11.320f	226008	1.434 ug/ml
10) T n-Eicosane (C20)	12.564	249592	1.566 ug/ml
11) T n-Heneicosane (C21)	13.202	295196	1.840 ug/ml
13) T n-Docosane (C22)	13.779	489048	3.044 ug/ml
14) T n-Tetracosane (C24)	14.873	115587	0.722 ug/ml
15) T n-Hexacosane (C26)	15.889	86712	0.547 ug/ml
16) T n-Octacosane (C28)	16.826	172165	1.111 ug/ml
17) T n-Tricontane (C30)	17.722	362390	2.355 ug/ml
18) T n-Dotriacontane (C32)	18.555	129645	0.857 ug/ml
19) T n-Tetratriacontane (C34)	19.368	193352	1.364 ug/ml
20) T n-Hexatriacontane (C36)	20.078	37557	0.272 ug/ml

(f)=RT Delta > 1/2 Window

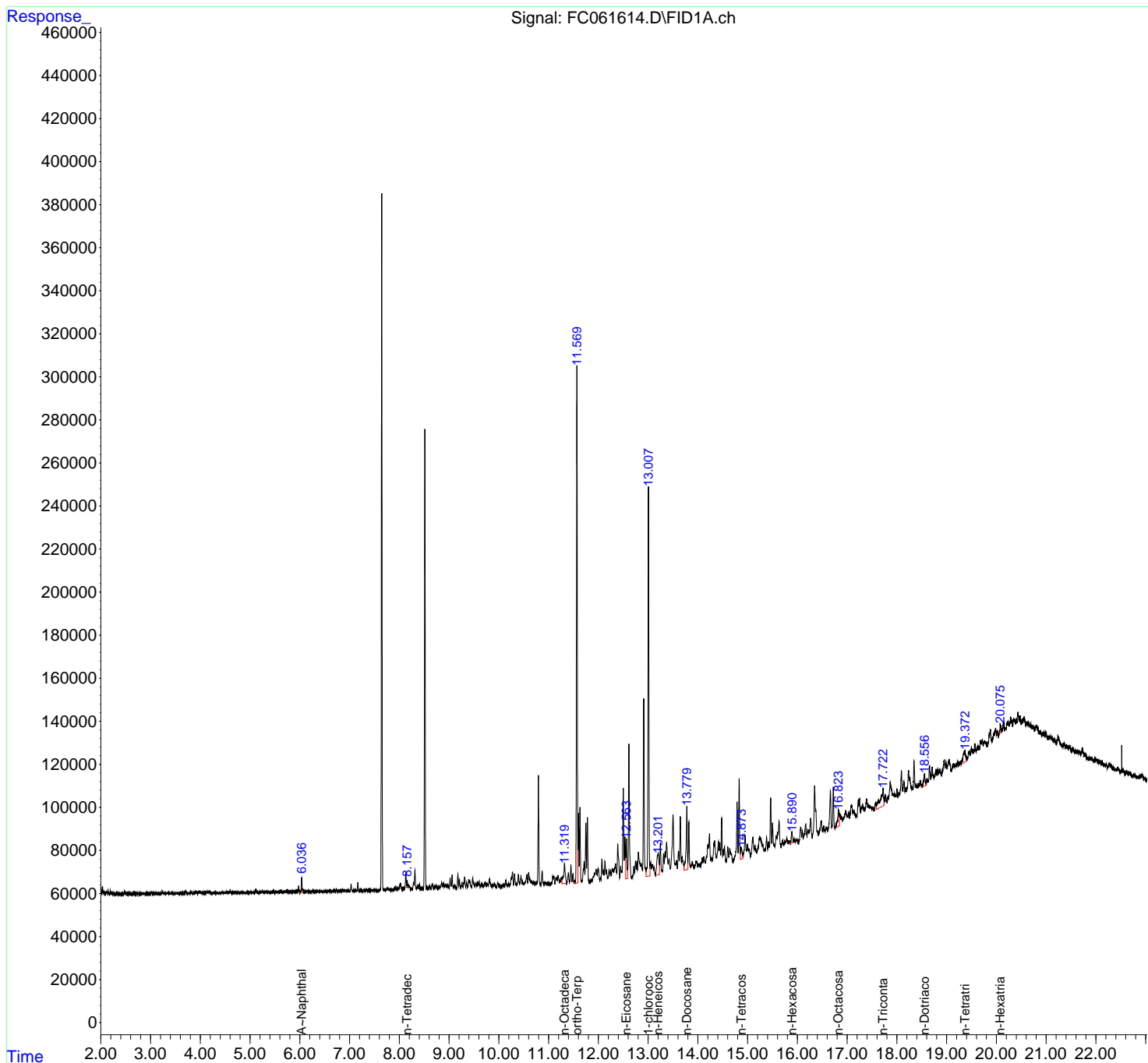
(m)=manual int.

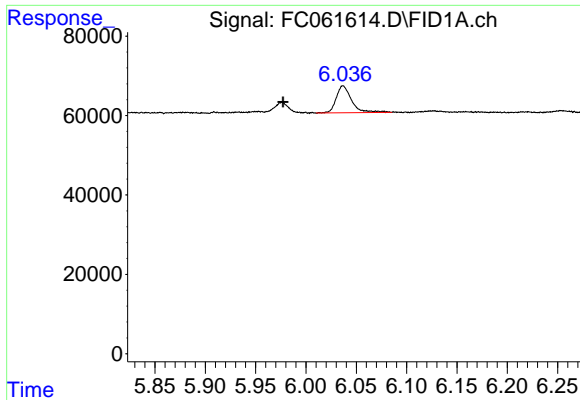
Data Path : Z:\pestpcbsrv\HPCHEM1\FID_C\Data\FC092622AL\
 Data File : FC061614.D
 Signal(s) : FID1A.ch
 Acq On : 26 Sep 2022 13:08
 Operator : YP/AJ
 Sample : N4765-02DL 2X
 Misc :
 ALS Vial : 6 Sample Multiplier: 1

Instrument :
 FID_C
 ClientSampleId :

Integration File: autoint1.e
 Quant Time: Sep 27 06:45:26 2022
 Quant Method : Z:\pestpcbsrv\HPCHEM1\FID_C\Method\Aliphatic EPH 092022.M
 Quant Title : GC Extractables
 QLast Update : Tue Sep 20 18:33:32 2022
 Response via : Initial Calibration
 Integrator: ChemStation

Volume Inj. : 1 ul
 Signal Phase : Rxi-1ms
 Signal Info : 20M x 0.18mm x 0.18um

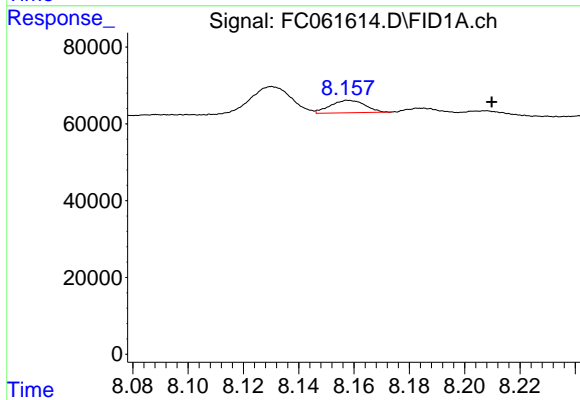




#3 A~Naphthalene (C11.7)

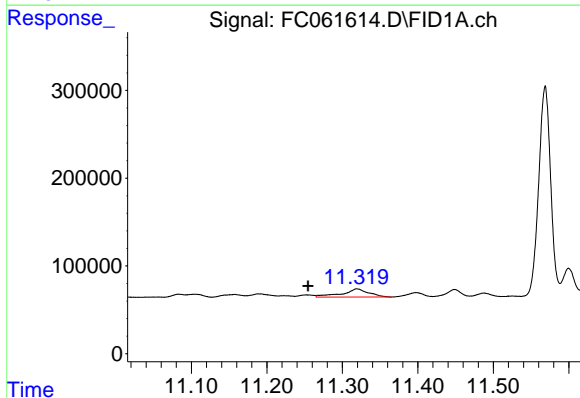
R.T.: 6.037 min
 Delta R.T.: 0.060 min
 Response: 72104
 Conc: 0.43 ug/ml

Instrument :
 FID_C
 ClientSampleId :



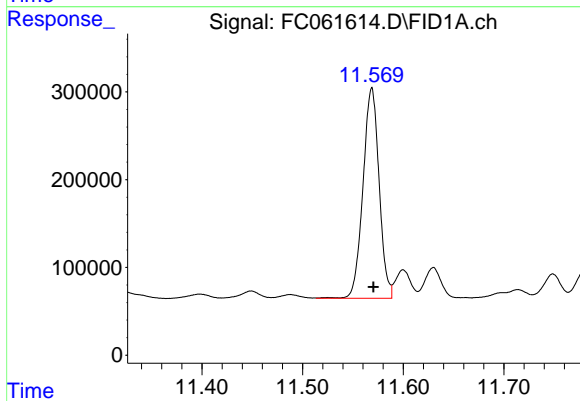
#6 n-Tetradecane (C14)

R.T.: 8.158 min
 Delta R.T.: -0.051 min
 Response: 28162
 Conc: 0.18 ug/ml



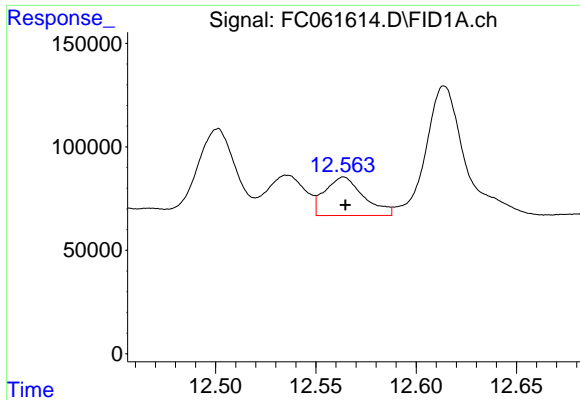
#8 n-Octadecane (C18)

R.T.: 11.320 min
 Delta R.T.: 0.065 min
 Response: 226008
 Conc: 1.43 ug/ml



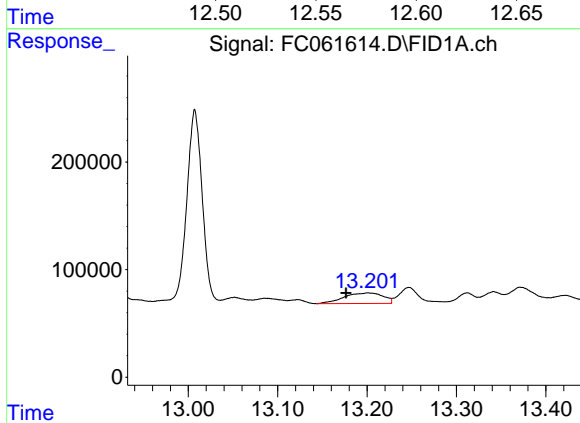
#9 ortho-Terphenyl (SURR)

R.T.: 11.569 min
 Delta R.T.: -0.002 min
 Response: 2668432
 Conc: 15.61 ug/ml

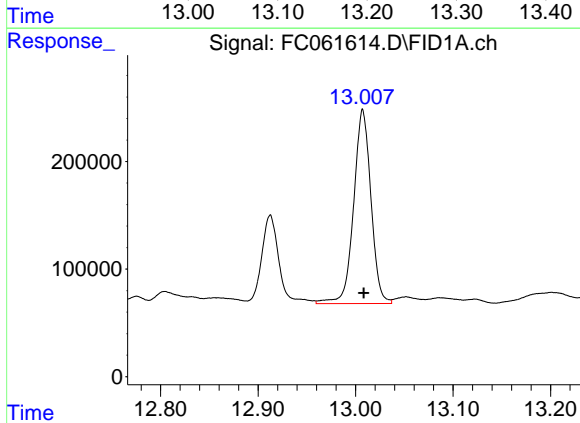


#10 n-Eicosane (C20)
 R.T.: 12.564 min
 Delta R.T.: 0.000 min
 Response: 249592
 Conc: 1.57 ug/ml

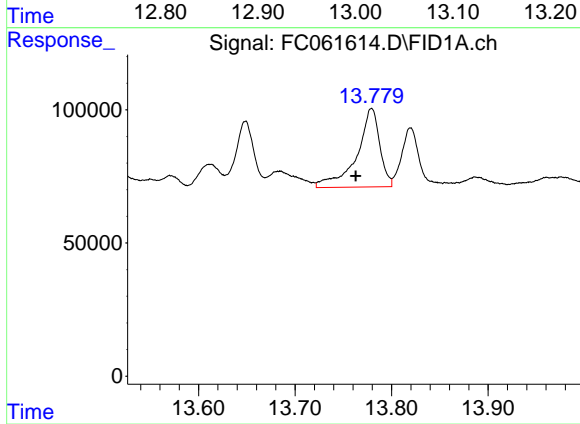
Instrument :
 FID_C
 ClientSampleId :



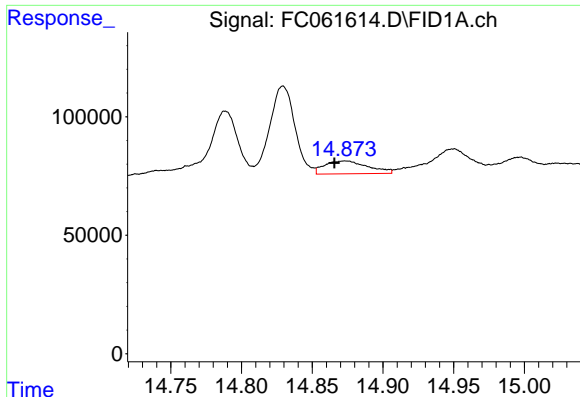
#11 n-Heneicosane (C21)
 R.T.: 13.202 min
 Delta R.T.: 0.025 min
 Response: 295196
 Conc: 1.84 ug/ml



#12 1-chlorooctadecane (SURR)
 R.T.: 13.007 min
 Delta R.T.: 0.000 min
 Response: 2226567
 Conc: 16.30 ug/ml



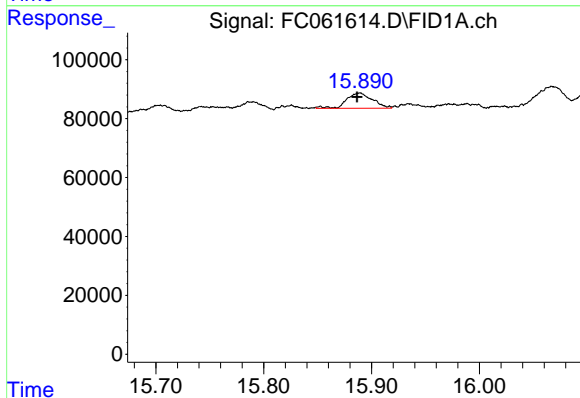
#13 n-Docosane (C22)
 R.T.: 13.779 min
 Delta R.T.: 0.016 min
 Response: 489048
 Conc: 3.04 ug/ml



#14 n-Tetracosane (C24)

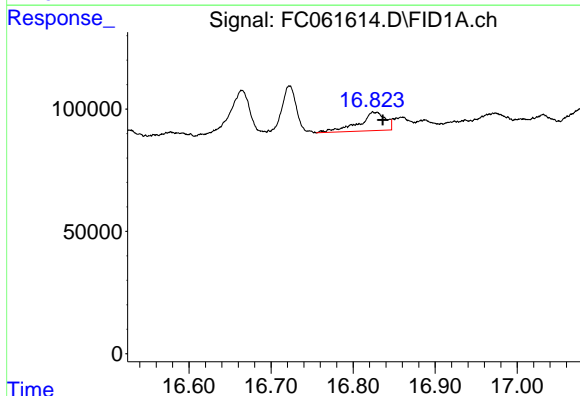
R.T.: 14.873 min
 Delta R.T.: 0.007 min
 Response: 115587
 Conc: 0.72 ug/ml

Instrument :
 FID_C
 ClientSampleId :



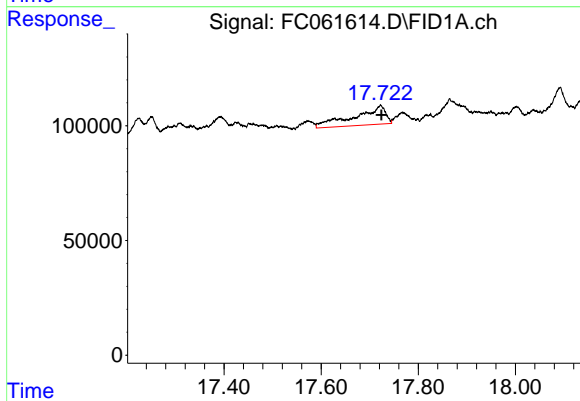
#15 n-Hexacosane (C26)

R.T.: 15.889 min
 Delta R.T.: 0.002 min
 Response: 86712
 Conc: 0.55 ug/ml



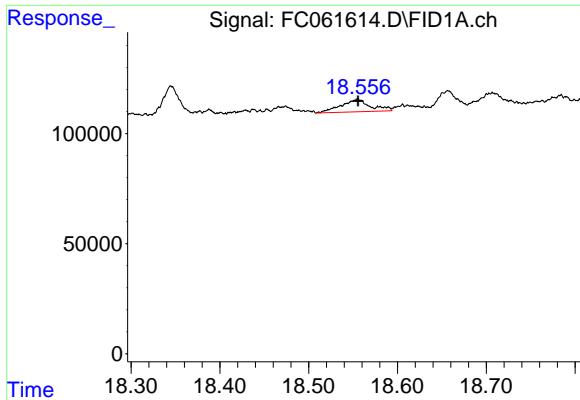
#16 n-Octacosane (C28)

R.T.: 16.826 min
 Delta R.T.: -0.010 min
 Response: 172165
 Conc: 1.11 ug/ml



#17 n-Tricontane (C30)

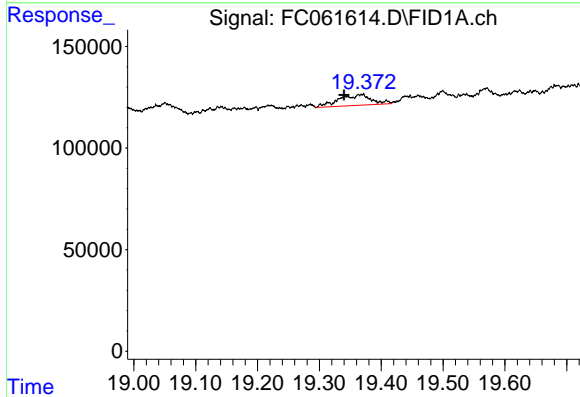
R.T.: 17.722 min
 Delta R.T.: -0.002 min
 Response: 362390
 Conc: 2.35 ug/ml



#18 n-Dotriacontane (C32)

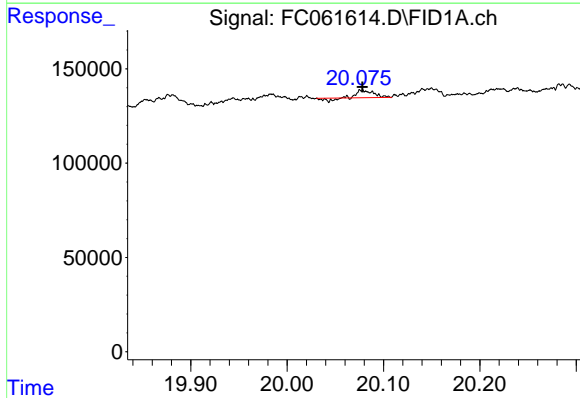
R.T.: 18.555 min
 Delta R.T.: 0.000 min
 Response: 129645
 Conc: 0.86 ug/ml

Instrument :
 FID_C
 ClientSampleId :



#19 n-Tetratriacontane (C34)

R.T.: 19.368 min
 Delta R.T.: 0.028 min
 Response: 193352
 Conc: 1.36 ug/ml



#20 n-Hexatriacontane (C36)

R.T.: 20.078 min
 Delta R.T.: 0.000 min
 Response: 37557
 Conc: 0.27 ug/ml