

Data Path : Z:\pestpcbsrv\HPCHEM1\FID\_C\Data\FC092622AL\  
Data File : FC061622.D  
Signal(s) : FID1A.ch  
Acq On : 27 Sep 2022 08:07  
Operator : YP/AJ  
Sample : I.BLK  
Misc :  
ALS Vial : 1 Sample Multiplier: 1

Instrument :  
FID\_C  
ClientSampleId :

Integration File: autoint1.e  
Quant Time: Sep 27 09:32:07 2022  
Quant Method : Z:\pestpcbsrv\HPCHEM1\FID\_C\Method\Aliphatic EPH 092022.M  
Quant Title : GC Extractables  
QLast Update : Tue Sep 20 18:33:32 2022  
Response via : Initial Calibration  
Integrator: ChemStation

Volume Inj. : 1 ul  
Signal Phase : Rxi-1ms  
Signal Info : 20M x 0.18mm x 0.18um

Compound	R.T.	Response	Conc Units
-----			
System Monitoring Compounds			
Target Compounds			
21) T n-Octatriacontane (C38)	20.811	545285	4.211 ug/ml

(f)=RT Delta > 1/2 Window

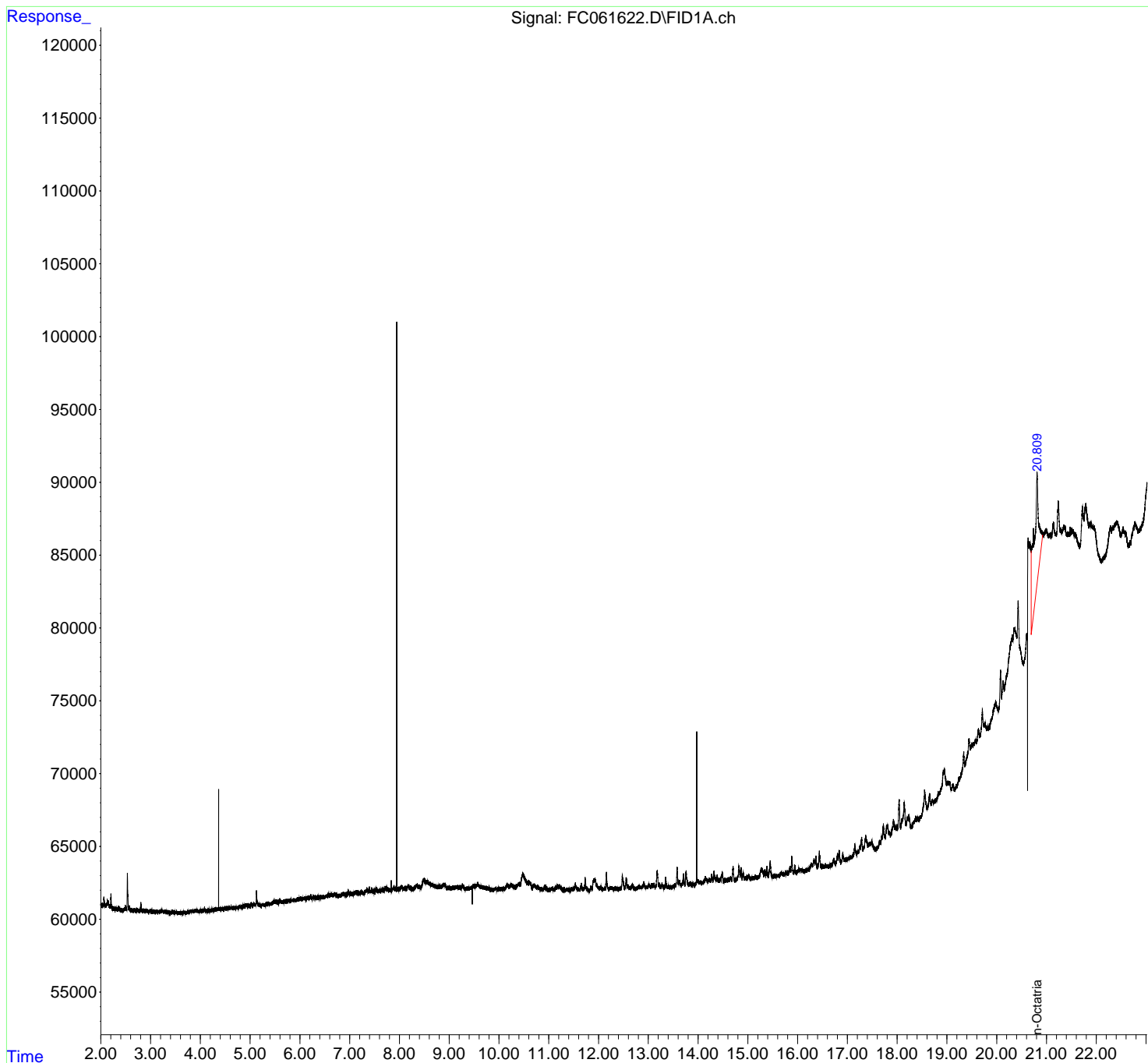
(m)=manual int.

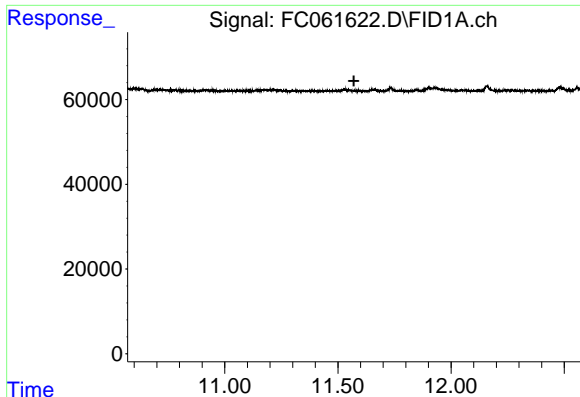
Data Path : Z:\pestpcbsrv\HPCHEM1\FID\_C\Data\FC092622AL\  
 Data File : FC061622.D  
 Signal(s) : FID1A.ch  
 Acq On : 27 Sep 2022 08:07  
 Operator : YP/AJ  
 Sample : I.BLK  
 Misc :  
 ALS Vial : 1 Sample Multiplier: 1

Instrument :  
 FID\_C  
 ClientSampleId :

Integration File: autoint1.e  
 Quant Time: Sep 27 09:32:07 2022  
 Quant Method : Z:\pestpcbsrv\HPCHEM1\FID\_C\Method\Aliphatic EPH 092022.M  
 Quant Title : GC Extractables  
 QLast Update : Tue Sep 20 18:33:32 2022  
 Response via : Initial Calibration  
 Integrator: ChemStation

Volume Inj. : 1 ul  
 Signal Phase : Rxi-1ms  
 Signal Info : 20M x 0.18mm x 0.18um

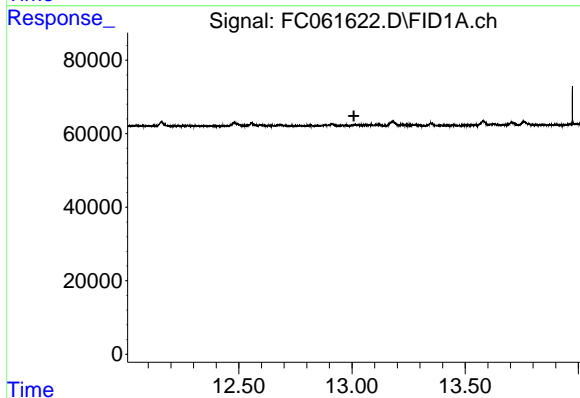




#9 ortho-Terphenyl (SURR)

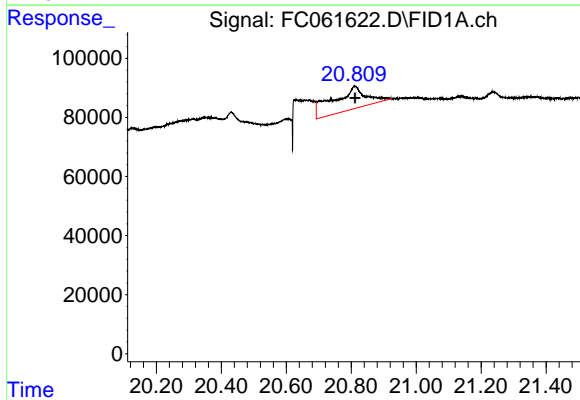
R.T.: 0.000 min  
 Exp R.T.: 11.571 min  
 Response: 0  
 Conc: N.D.

Instrument :  
 FID\_C  
 ClientSampleId :



#12 1-chlorooctadecane (SURR)

R.T.: 0.000 min  
 Exp R.T.: 13.008 min  
 Response: 0  
 Conc: N.D.



#21 n-Octatriacontane (C38)

R.T.: 20.811 min  
 Delta R.T.: 0.000 min  
 Response: 545285  
 Conc: 4.21 ug/ml