

Data Path : Z:\pestpcbsrv\HPCHEM1\FID\_C\Data\FC092623AL\  
 Data File : FC064671.D  
 Signal(s) : FID1A.ch  
 Acq On : 26 Sep 2023 19:31  
 Operator : YP/AJ  
 Sample : 04536-02  
 Misc :  
 ALS Vial : 11 Sample Multiplier: 1

Instrument :  
 FID\_C  
 ClientSampleId :  
 T-2

Integration File: autoint1.e  
 Quant Time: Sep 27 01:09:33 2023  
 Quant Method : Z:\pestpcbsrv\HPCHEM1\FID\_C\Method\Aliphatic EPH 091523.M  
 Quant Title : GC Extractables  
 QLast Update : Fri Sep 15 01:25:53 2023  
 Response via : Initial Calibration  
 Integrator: ChemStation

Volume Inj. : 1 ul  
 Signal Phase : Rxi-1ms  
 Signal Info : 20M x 0.18mm x 0.18um

Compound	R.T.	Response	Conc Units
-----			
System Monitoring Compounds			
12) S 1-chlorooctadecane (S...	12.951	3614206	24.813 ug/ml
Spiked Amount	50.000	Recovery	= 49.63%

Target Compounds

(f)=RT Delta > 1/2 Window

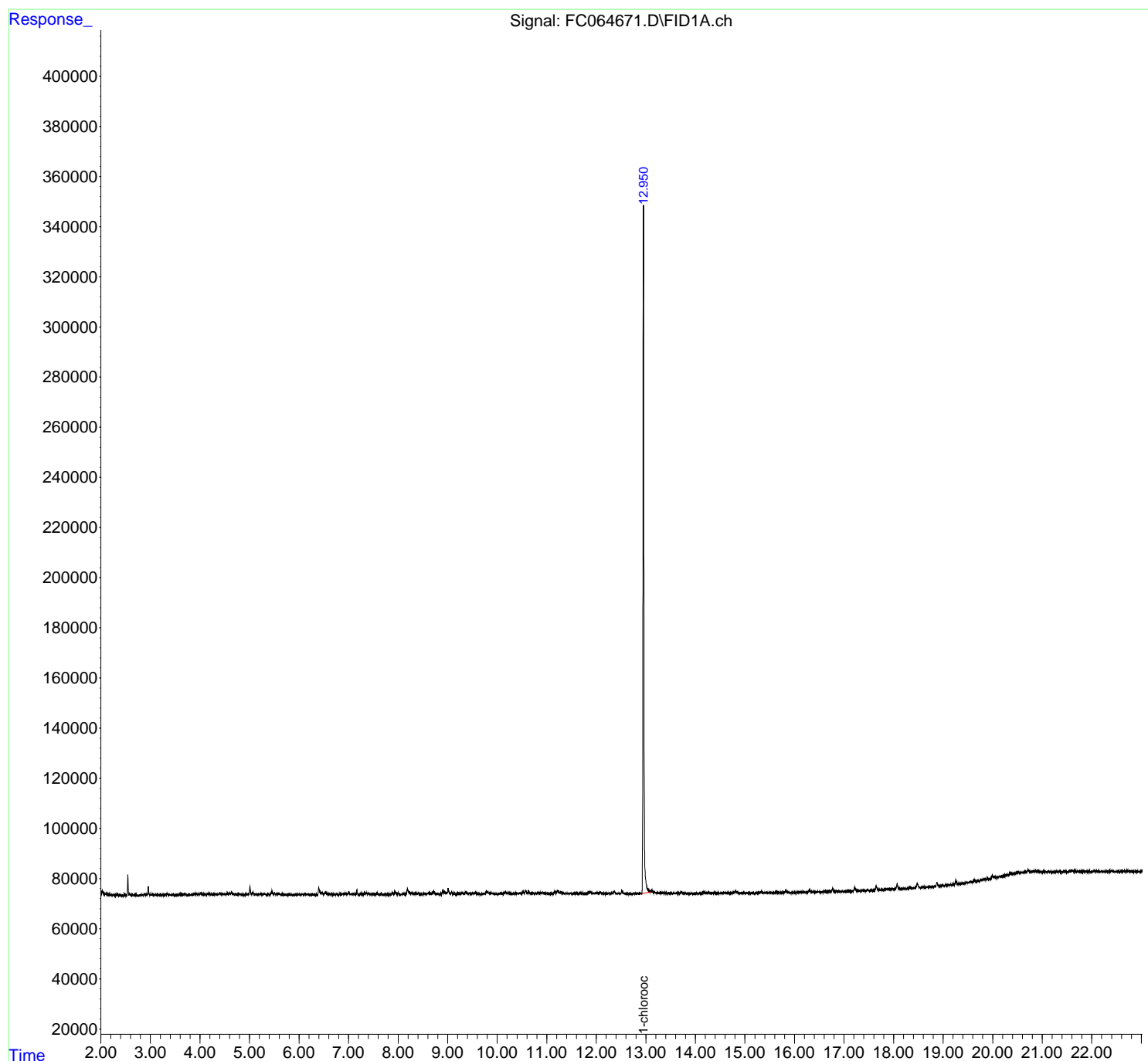
(m)=manual int.

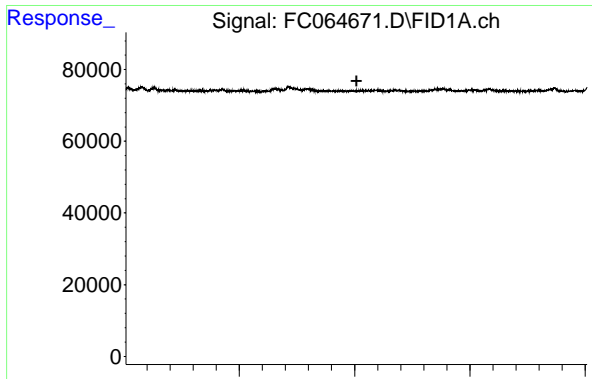
Data Path : Z:\pestpcbsrv\HPCHEM1\FID\_C\Data\FC092623AL\  
Data File : FC064671.D  
Signal(s) : FID1A.ch  
Acq On : 26 Sep 2023 19:31  
Operator : YP/AJ  
Sample : 04536-02  
Misc :  
ALS Vial : 11 Sample Multiplier: 1

Instrument :  
FID\_C  
ClientSampleId :  
T-2

Integration File: autoint1.e  
Quant Time: Sep 27 01:09:33 2023  
Quant Method : Z:\pestpcbsrv\HPCHEM1\FID\_C\Method\Aliphatic EPH 091523.M  
Quant Title : GC Extractables  
QLast Update : Fri Sep 15 01:25:53 2023  
Response via : Initial Calibration  
Integrator: ChemStation

Volume Inj. : 1 ul  
Signal Phase : Rxi-1ms  
Signal Info : 20M x 0.18mm x 0.18um

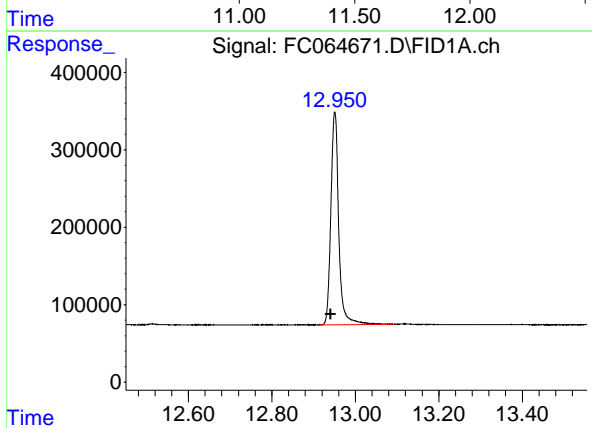




#9 ortho-Terphenyl (SURR)

R.T.: 0.000 min  
 Exp R.T.: 11.508 min  
 Response: 0  
 Conc: N.D.

Instrument :  
 FID\_C  
 ClientSampleId :  
 T-2



#12 1-chlorooctadecane (SURR)

R.T.: 12.951 min  
 Delta R.T.: 0.010 min  
 Response: 3614206  
 Conc: 24.81 ug/ml