

Data Path : Z:\pestpcbsrv\HPCHEM1\FID_C\Data\FC092920AL\
 Data File : FC049839.D
 Signal(s) : FID1A.CH
 Acq On : 30 Sep 2020 12:40
 Operator : DD\AJ
 Sample : L4173-12DL 2X
 Misc :
 ALS Vial : 33 Sample Multiplier: 1

Integration File: autoint1.e
 Quant Time: Sep 30 13:46:55 2020
 Quant Method : Z:\pestpcbsrv\HPCHEM1\FID_C\Method\Alaphatic EPH 090820.M
 Quant Title : GC Extractables
 QLast Update : Wed Sep 09 05:58:47 2020
 Response via : Initial Calibration
 Integrator: ChemStation 6890 Scale Mode: Large solvent peaks clipped

Volume Inj. : 1 ul
 Signal Phase : Rxi-1ms
 Signal Info : 20M x 0.18mm x 0.18um

Compound	R.T.	Response	Conc Units

System Monitoring Compounds			
9) S ortho-Terphenyl (SURR)	11.658	1735786	15.108 ug/mlm
Spiked Amount	50.000	Recovery	= 30.22%
12) S 1-chlorooctadecane (S...	13.093	1406248	15.788 ug/ml
Spiked Amount	50.000	Recovery	= 31.58%

Target Compounds

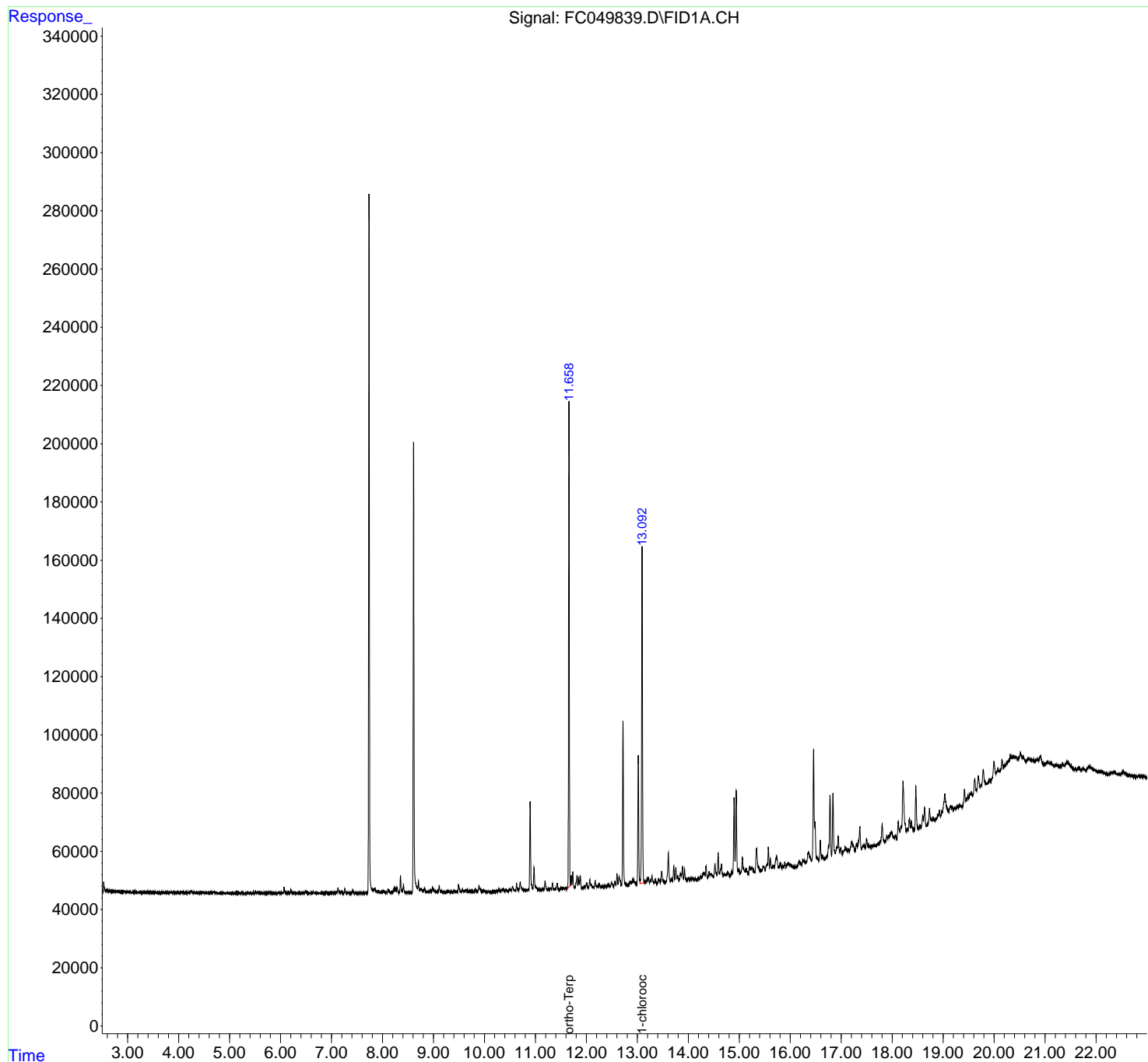
(f)=RT Delta > 1/2 Window

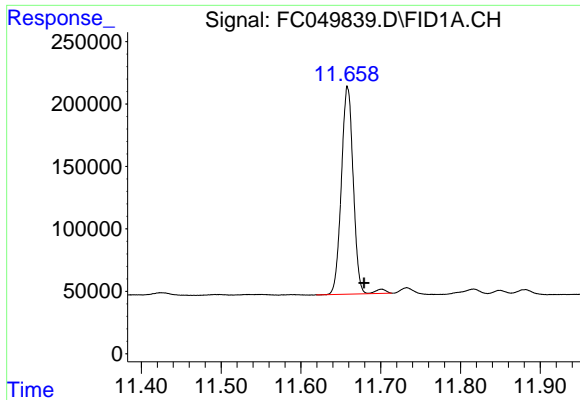
(m)=manual int.

Data Path : Z:\pestpcbsrv\HPCHEM1\FID_C\Data\FC092920AL\
Data File : FC049839.D
Signal(s) : FID1A.CH
Acq On : 30 Sep 2020 12:40
Operator : DD\AJ
Sample : L4173-12DL 2X
Misc :
ALS Vial : 33 Sample Multiplier: 1

Integration File: autoint1.e
Quant Time: Sep 30 13:46:55 2020
Quant Method : Z:\pestpcbsrv\HPCHEM1\FID_C\Method\Alaphatic EPH 090820.M
Quant Title : GC Extractables
QLast Update : Wed Sep 09 05:58:47 2020
Response via : Initial Calibration
Integrator: ChemStation 6890 Scale Mode: Large solvent peaks clipped

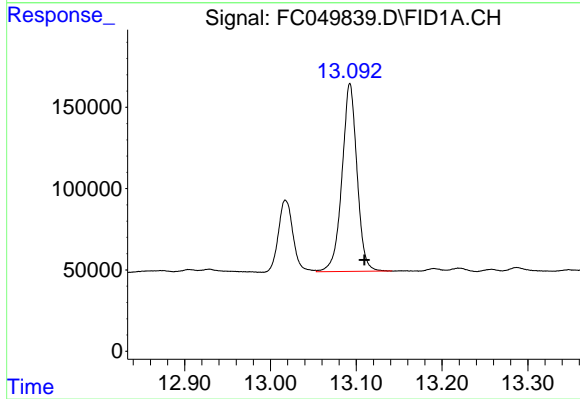
Volume Inj. : 1 ul
Signal Phase : Rxi-1ms
Signal Info : 20M x 0.18mm x 0.18um





#9 ortho-Terphenyl (SURR)

R.T.: 11.658 min
Delta R.T.: -0.022 min
Response: 1735786
Conc: 15.11 ug/ml m



#12 1-chlorooctadecane (SURR)

R.T.: 13.093 min
Delta R.T.: -0.017 min
Response: 1406248
Conc: 15.79 ug/ml