

Data Path : Z:\pestpcbsrv\HPCHEM1\FID_C\Data\FC100223AL\
 Data File : FC064698.D
 Signal(s) : FID1A.ch
 Acq On : 02 Oct 2023 20:21
 Operator : YP/AJ
 Sample : 20 PPM ALIPHATIC HC STD
 Misc :
 ALS Vial : 6 Sample Multiplier: 1

Instrument :
 FID_C
 ClientSampleId :
 20 PPM ALIPHATIC HC STD

Integration File: autoint1.e
 Quant Time: Oct 03 00:32:00 2023
 Quant Method : Z:\pestpcbsrv\HPCHEM1\FID_C\Method\Aliphatic EPH 091523.M
 Quant Title : GC Extractables
 QLast Update : Fri Sep 15 01:25:53 2023
 Response via : Initial Calibration
 Integrator: ChemStation

Volume Inj. : 1 ul
 Signal Phase : Rxi-1ms
 Signal Info : 20M x 0.18mm x 0.18um

Compound	R.T.	Response	Conc Units

System Monitoring Compounds			
9) S ortho-Terphenyl (SURR)	11.521	4572886	22.600 ug/ml
Spiked Amount	50.000	Recovery =	45.20%
12) S 1-chlorooctadecane (S...	12.951	3260647	22.386 ug/ml
Spiked Amount	50.000	Recovery =	44.77%
Target Compounds			
1) T n-Nonane (C9)	3.324	4012296	22.705 ug/ml
2) T n-Decane (C10)	4.383	4044200	22.512 ug/ml
3) T A~Naphthalene (C11.7)	5.962	4251265	22.629 ug/ml
4) T n-Dodecane (C12)	6.390	4118688	22.675 ug/ml
5) T A~2-methylnaphthalene...	7.015	4036241	22.633 ug/ml
6) T n-Tetradecane (C14)	8.178	3988336	22.477 ug/ml
7) T n-Hexadecane (C16)	9.771	3987090	22.181 ug/ml
8) T n-Octadecane (C18)	11.207	3944653	21.787 ug/ml
10) T n-Eicosane (C20)	12.508	3755952	22.050 ug/ml
11) T n-Heneicosane (C21)	13.117	3657472	22.083 ug/ml
13) T n-Docosane (C22)	13.701	3559454	21.849 ug/ml
14) T n-Tetracosane (C24)	14.799	3397665	21.401 ug/ml
15) T n-Hexacosane (C26)	15.813	3229332	21.155 ug/ml
16) T n-Octacosane (C28)	16.760	3109560	21.011 ug/ml
17) T n-Tricontane (C30)	17.643	3102096	20.882 ug/ml
18) T n-Dotriacontane (C32)	18.471	3051441	20.909 ug/ml
19) T n-Tetratriacontane (C34)	19.251	2943342	20.703 ug/ml
20) T n-Hexatriacontane (C36)	19.986	2868537	20.827 ug/ml
21) T n-Octatriacontane (C38)	20.710	2676136	19.527 ug/ml
22) T n-Tetracontane (C40)	21.588	2436257	17.910 ug/ml

(f)=RT Delta > 1/2 Window

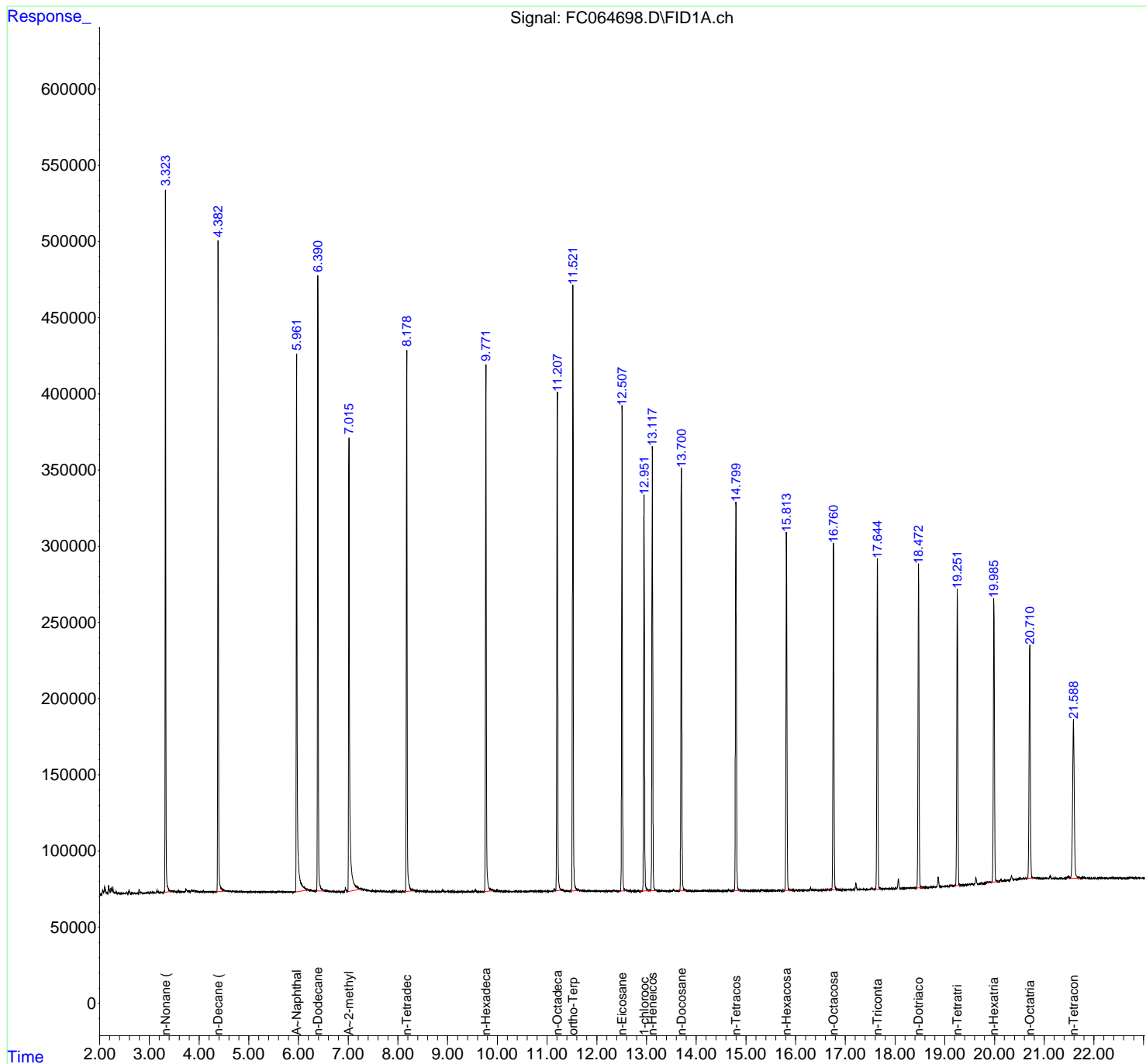
(m)=manual int.

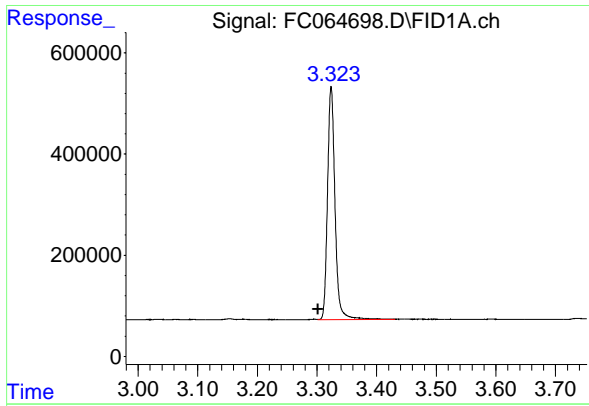
Data Path : Z:\pestpcbsrv\HPCHEM1\FID_C\Data\FC100223AL\
 Data File : FC064698.D
 Signal(s) : FID1A.ch
 Acq On : 02 Oct 2023 20:21
 Operator : YP/AJ
 Sample : 20 PPM ALIPHATIC HC STD
 Misc :
 ALS Vial : 6 Sample Multiplier: 1

Instrument :
 FID_C
 ClientSampleId :
 20 PPM ALIPHATIC HC STD

Integration File: autoint1.e
 Quant Time: Oct 03 00:32:00 2023
 Quant Method : Z:\pestpcbsrv\HPCHEM1\FID_C\Method\Aliphatic EPH 091523.M
 Quant Title : GC Extractables
 QLast Update : Fri Sep 15 01:25:53 2023
 Response via : Initial Calibration
 Integrator: ChemStation

Volume Inj. : 1 ul
 Signal Phase : Rxi-1ms
 Signal Info : 20M x 0.18mm x 0.18um

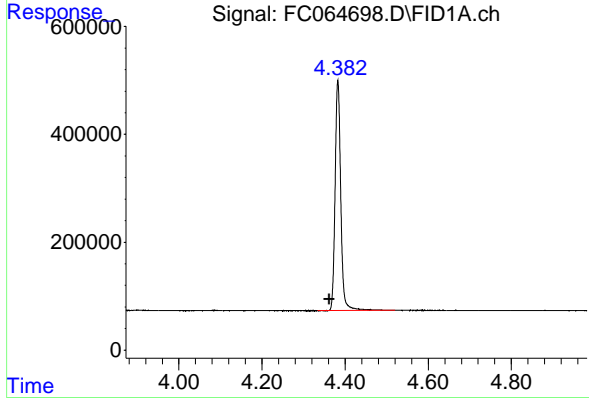




#1 n-Nonane (C9)

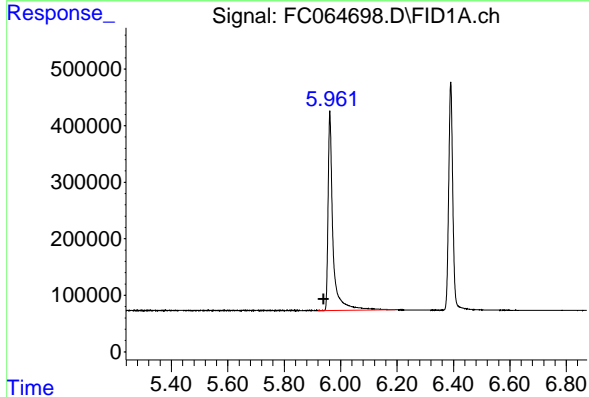
R.T.: 3.324 min
 Delta R.T.: 0.022 min
 Response: 4012296
 Conc: 22.70 ug/ml

Instrument : FID_C
 ClientSampleId : 20 PPM ALIPHATIC HC STD



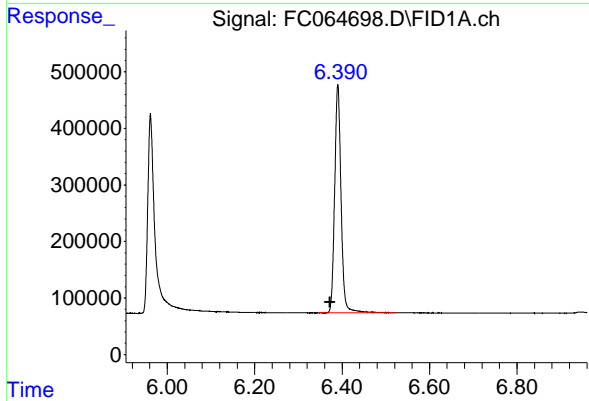
#2 n-Decane (C10)

R.T.: 4.383 min
 Delta R.T.: 0.020 min
 Response: 4044200
 Conc: 22.51 ug/ml



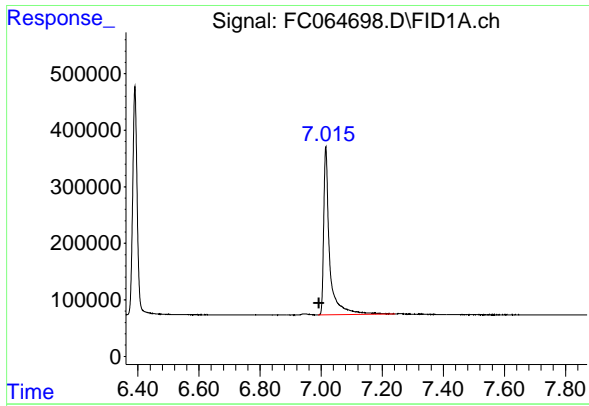
#3 A~Naphthalene (C11.7)

R.T.: 5.962 min
 Delta R.T.: 0.023 min
 Response: 4251265
 Conc: 22.63 ug/ml



#4 n-Dodecane (C12)

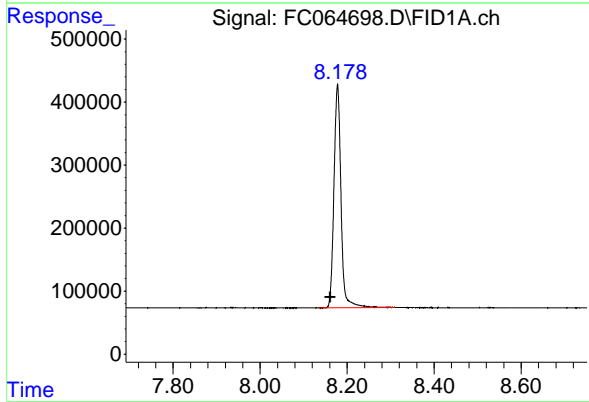
R.T.: 6.390 min
 Delta R.T.: 0.018 min
 Response: 4118688
 Conc: 22.68 ug/ml



#5 A~2-methylnaphthalene (C12.89)

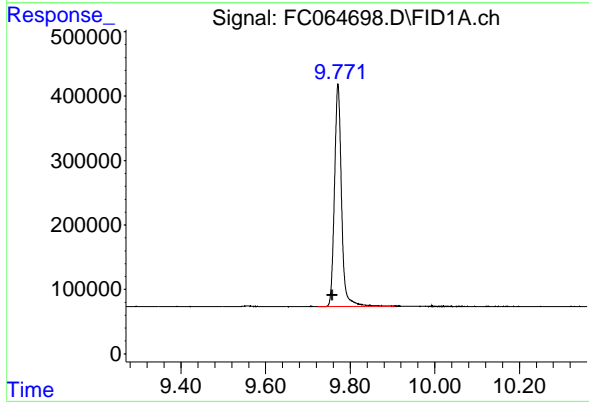
R.T.: 7.015 min
 Delta R.T.: 0.023 min
 Response: 4036241
 Conc: 22.63 ug/ml

Instrument : FID_C
 ClientSampleId : 20 PPM ALIPHATIC HC STD



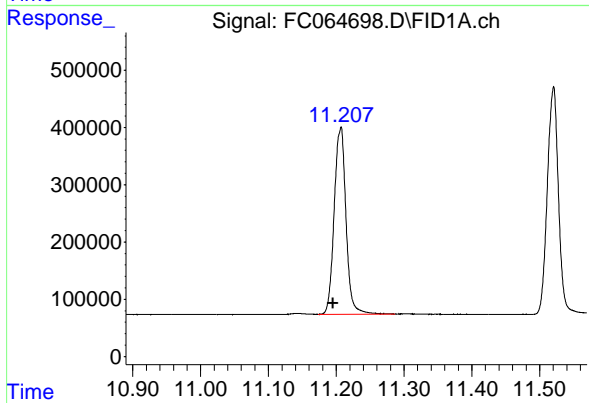
#6 n-Tetradecane (C14)

R.T.: 8.178 min
 Delta R.T.: 0.017 min
 Response: 3988336
 Conc: 22.48 ug/ml



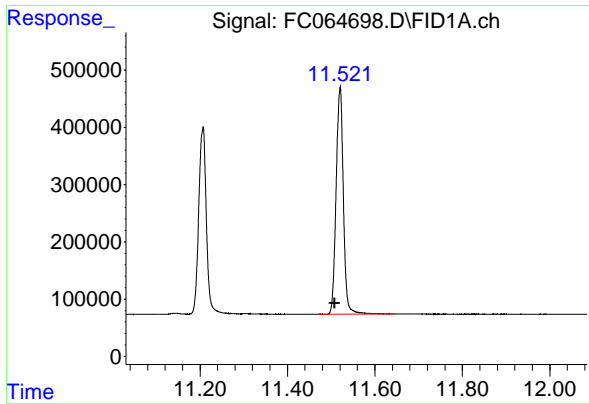
#7 n-Hexadecane (C16)

R.T.: 9.771 min
 Delta R.T.: 0.013 min
 Response: 3987090
 Conc: 22.18 ug/ml



#8 n-Octadecane (C18)

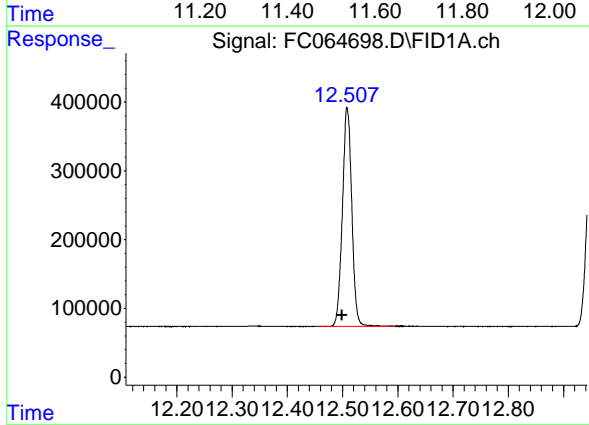
R.T.: 11.207 min
 Delta R.T.: 0.011 min
 Response: 3944653
 Conc: 21.79 ug/ml



#9 ortho-Terphenyl (SURR)

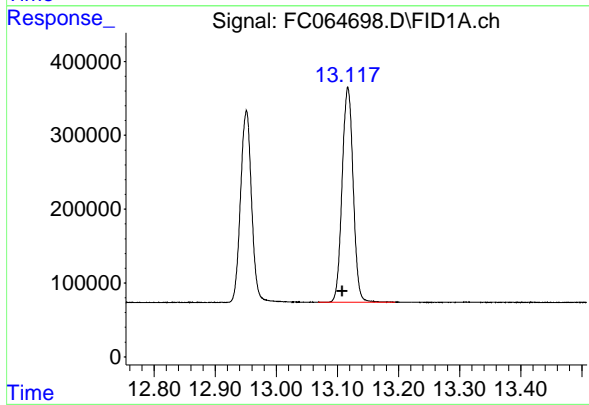
R.T.: 11.521 min
 Delta R.T.: 0.012 min
 Response: 4572886
 Conc: 22.60 ug/ml

Instrument : FID_C
 ClientSampleId : 20 PPM ALIPHATIC HC STD



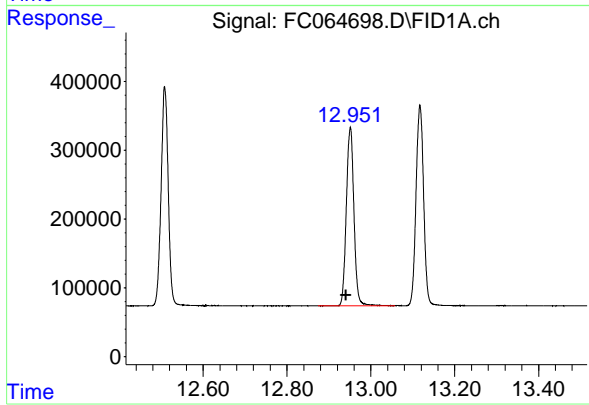
#10 n-Eicosane (C20)

R.T.: 12.508 min
 Delta R.T.: 0.009 min
 Response: 3755952
 Conc: 22.05 ug/ml



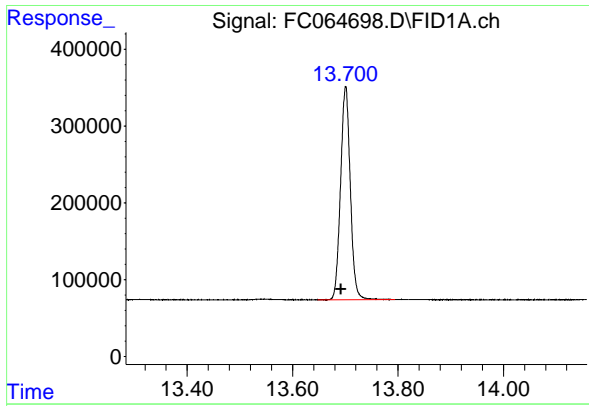
#11 n-Heneicosane (C21)

R.T.: 13.117 min
 Delta R.T.: 0.009 min
 Response: 3657472
 Conc: 22.08 ug/ml



#12 1-chlorooctadecane (SURR)

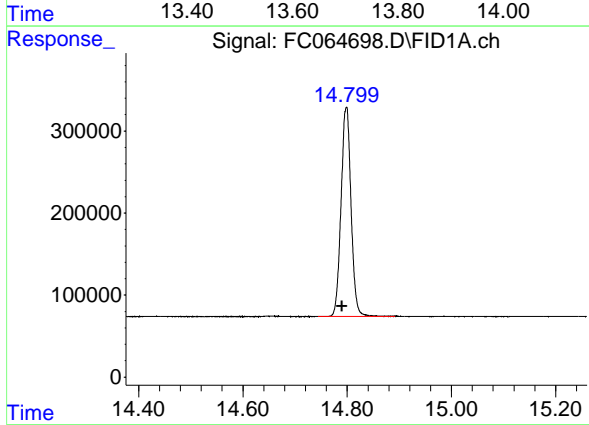
R.T.: 12.951 min
 Delta R.T.: 0.011 min
 Response: 3260647
 Conc: 22.39 ug/ml



#13 n-Docosane (C22)

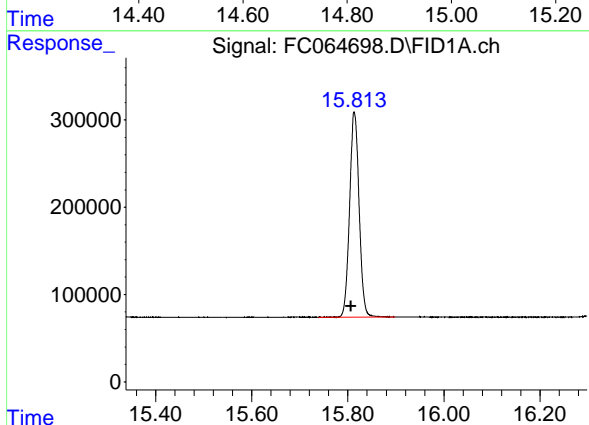
R.T.: 13.701 min
Delta R.T.: 0.009 min
Response: 3559454
Conc: 21.85 ug/ml

Instrument : FID_C
ClientSampleId : 20 PPM ALIPHATIC HC STD



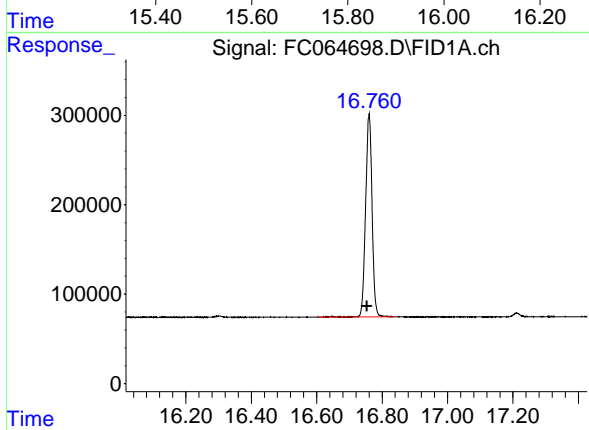
#14 n-Tetracosane (C24)

R.T.: 14.799 min
Delta R.T.: 0.008 min
Response: 3397665
Conc: 21.40 ug/ml



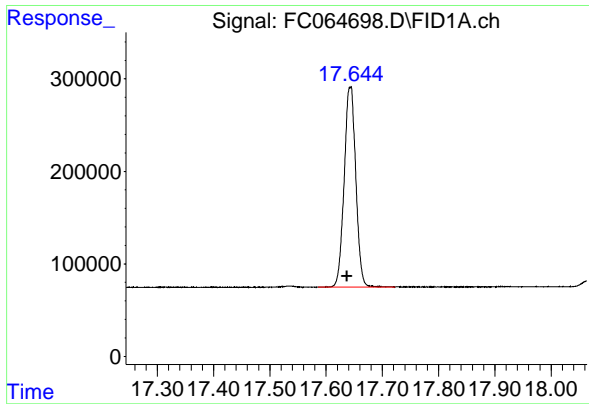
#15 n-Hexacosane (C26)

R.T.: 15.813 min
Delta R.T.: 0.007 min
Response: 3229332
Conc: 21.16 ug/ml



#16 n-Octacosane (C28)

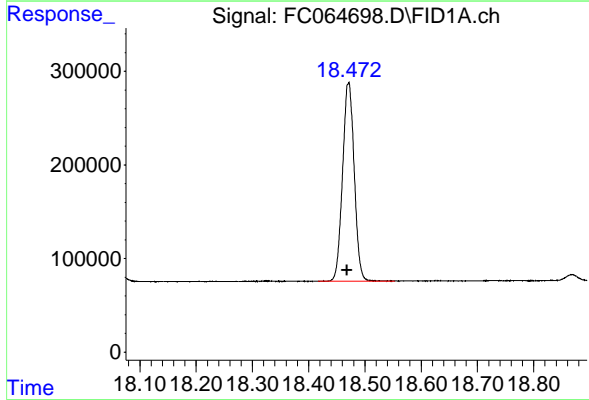
R.T.: 16.760 min
Delta R.T.: 0.007 min
Response: 3109560
Conc: 21.01 ug/ml



#17 n-Tricontane (C30)

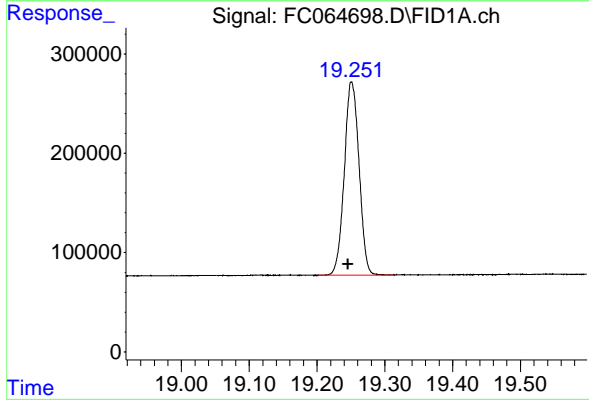
R.T.: 17.643 min
 Delta R.T.: 0.006 min
 Response: 3102096
 Conc: 20.88 ug/ml

Instrument : FID_C
 ClientSampleId : 20 PPM ALIPHATIC HC STD



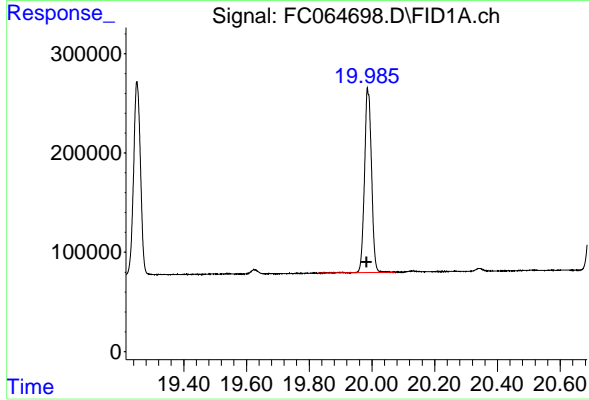
#18 n-Dotriacontane (C32)

R.T.: 18.471 min
 Delta R.T.: 0.003 min
 Response: 3051441
 Conc: 20.91 ug/ml



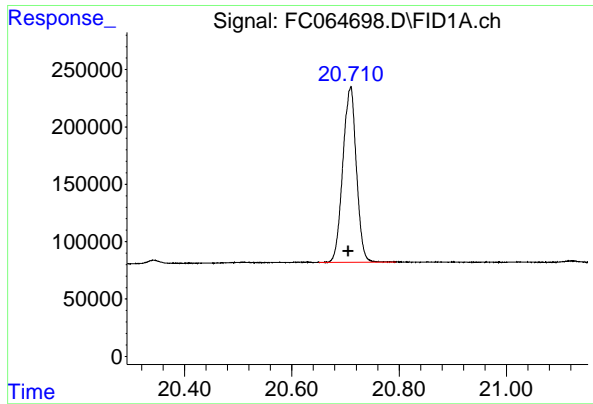
#19 n-Tetraatriacontane (C34)

R.T.: 19.251 min
 Delta R.T.: 0.005 min
 Response: 2943342
 Conc: 20.70 ug/ml



#20 n-Hexatriacontane (C36)

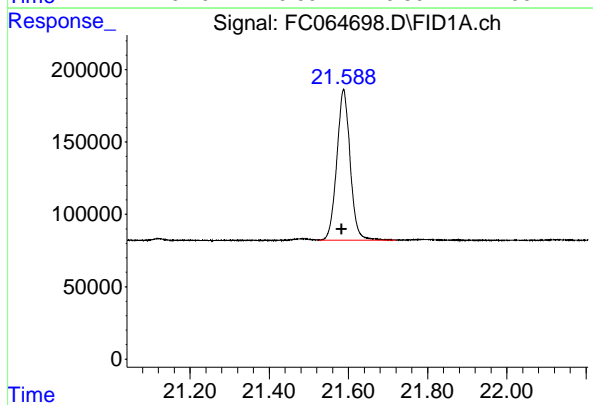
R.T.: 19.986 min
 Delta R.T.: 0.002 min
 Response: 2868537
 Conc: 20.83 ug/ml



#21 n-Octatriacontane (C38)

R.T.: 20.710 min
Delta R.T.: 0.005 min
Response: 2676136
Conc: 19.53 ug/ml

Instrument :
FID_C
ClientSampleId :
20 PPM ALIPHATIC HC STD



#22 n-Tetracontane (C40)

R.T.: 21.588 min
Delta R.T.: 0.005 min
Response: 2436257
Conc: 17.91 ug/ml