

Data Path : Z:\pestpcbsrv\HPCHEM1\FID_C\Data\FC100318AL\
 Data File : FC036636.D
 Signal(s) : FID1A.CH
 Acq On : 03 Oct 2018 15:38
 Operator : AJ\SJ
 Sample : J5198-01
 Misc :
 ALS Vial : 7 Sample Multiplier: 1

Integration File: autoint1.e
 Quant Time: Oct 04 03:23:39 2018
 Quant Method : Z:\PESTPCBSRV\HPCHEM1\FID_C\Method\Alaphatic EPH 092118.M
 Quant Title : GC Extractables
 QLast Update : Fri Sep 21 15:20:52 2018
 Response via : Initial Calibration
 Integrator: ChemStation 6890 Scale Mode: Large solvent peaks clipped

Volume Inj. : 1 ul
 Signal Phase : Rxi-1ms
 Signal Info : 20M x 0.18mm x 0.18um

Compound	R.T.	Response	Conc Units

System Monitoring Compounds			
9) S ortho-Terphenyl (SURR)	11.383	2943038	24.206 ug/ml
Spiked Amount	50.000	Recovery	= 48.41%
12) S 1-chlorooctadecane (S...	12.825	2197708	23.340 ug/ml
Spiked Amount	50.000	Recovery	= 46.68%
Target Compounds			
6) T n-Tetradecane (C14)	8.107	482863	4.936 ug/ml
10) T n-Eicosane (C20)	12.421	484010	4.375 ug/ml
14) T n-Tetracosane (C24)	14.629	214702	1.967 ug/ml
16) T n-Octacosane (C28)	16.639	359247	3.256 ug/ml
17) T n-Tricontane (C30)	17.519	650196	5.588 ug/ml
18) T n-Dotriacontane (C32)	18.358	372315	3.193 ug/ml
19) T n-Tetratriacontane (C34)	19.147	794737	7.092 ug/ml
20) T n-Hexatriacontane (C36)	19.848	776724	7.336 ug/ml
21) T n-Octatriacontane (C38)	20.579	1672470	15.822 ug/ml

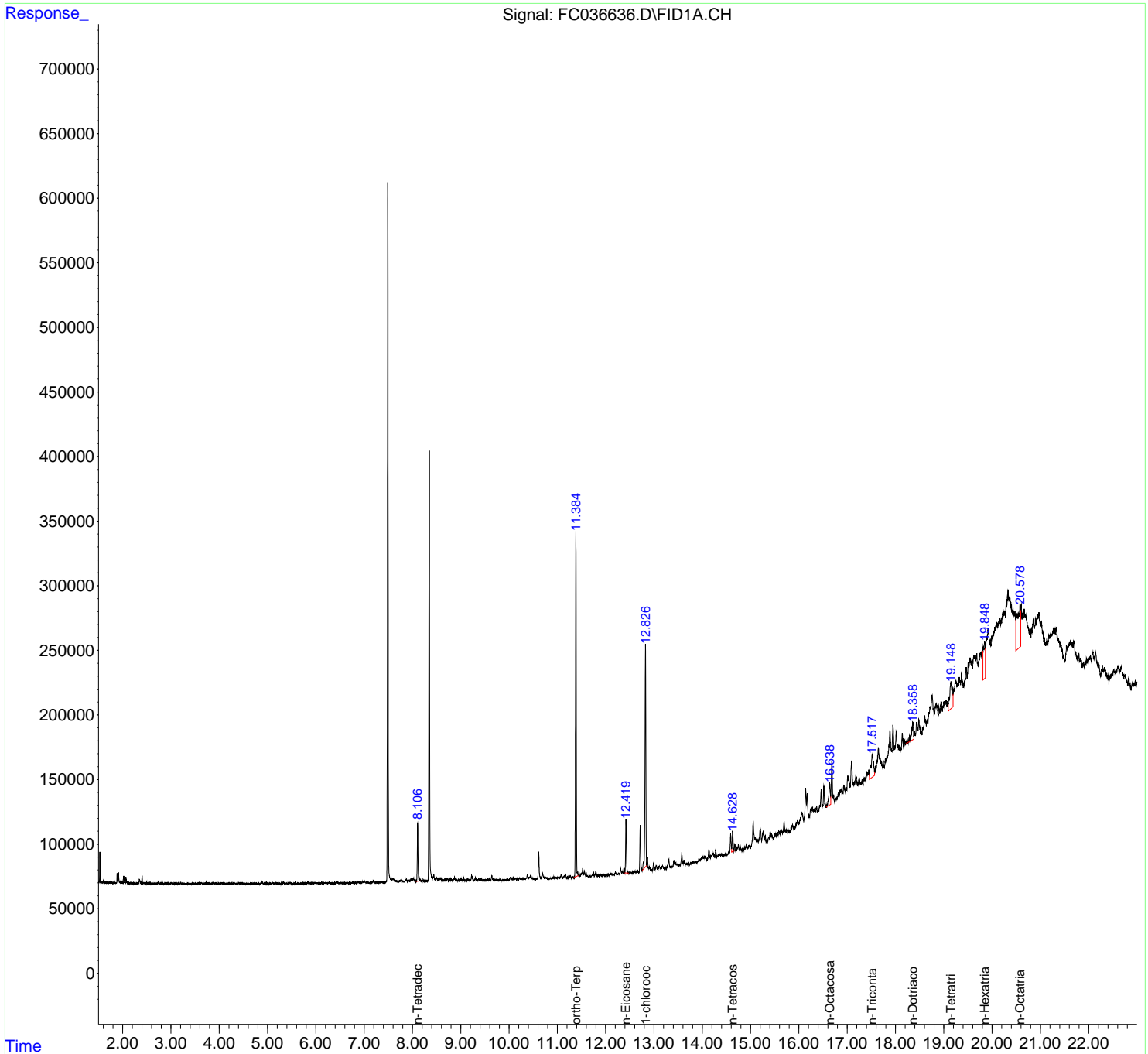
(f)=RT Delta > 1/2 Window

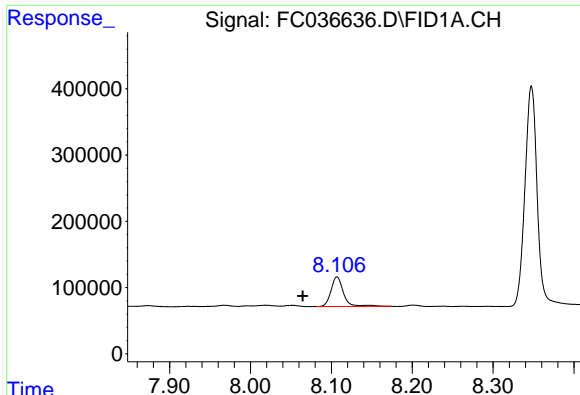
(m)=manual int.

Data Path : Z:\pestpcbsrv\HPCHEM1\FID_C\Data\FC100318AL\
 Data File : FC036636.D
 Signal(s) : FID1A.CH
 Acq On : 03 Oct 2018 15:38
 Operator : AJ\SJ
 Sample : J5198-01
 Misc :
 ALS Vial : 7 Sample Multiplier: 1

Integration File: autoint1.e
 Quant Time: Oct 04 03:23:39 2018
 Quant Method : Z:\PESTPCBSRV\HPCHEM1\FID_C\Method\Alaphatic EPH 092118.M
 Quant Title : GC Extractables
 QLast Update : Fri Sep 21 15:20:52 2018
 Response via : Initial Calibration
 Integrator: ChemStation 6890 Scale Mode: Large solvent peaks clipped

Volume Inj. : 1 ul
 Signal Phase : Rxi-1ms
 Signal Info : 20M x 0.18mm x 0.18um





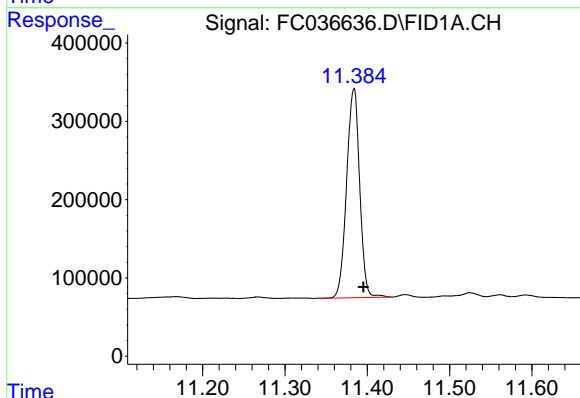
#6 n-Tetradecane (C14)

R.T.: 8.107 min

Delta R.T.: 0.042 min

Response: 482863

Conc: 4.94 ug/ml



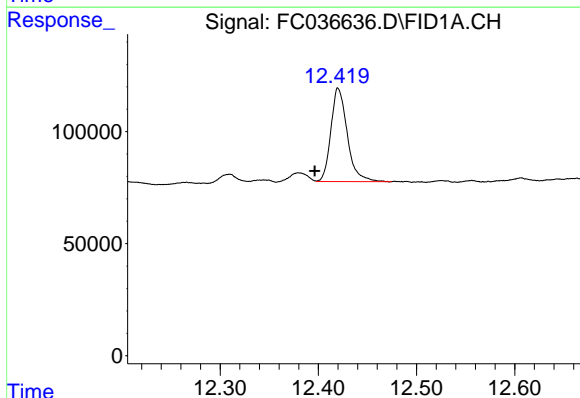
#9 ortho-Terphenyl (SURR)

R.T.: 11.383 min

Delta R.T.: -0.012 min

Response: 2943038

Conc: 24.21 ug/ml



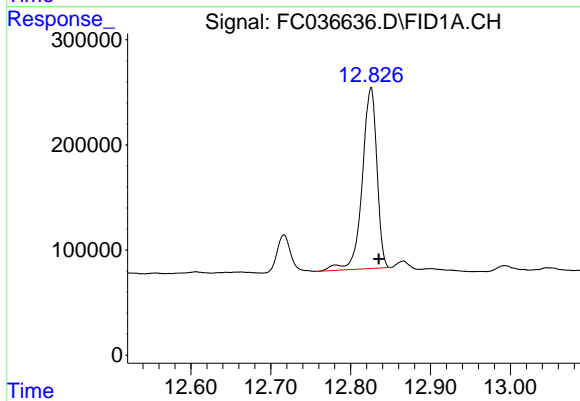
#10 n-Eicosane (C20)

R.T.: 12.421 min

Delta R.T.: 0.025 min

Response: 484010

Conc: 4.38 ug/ml



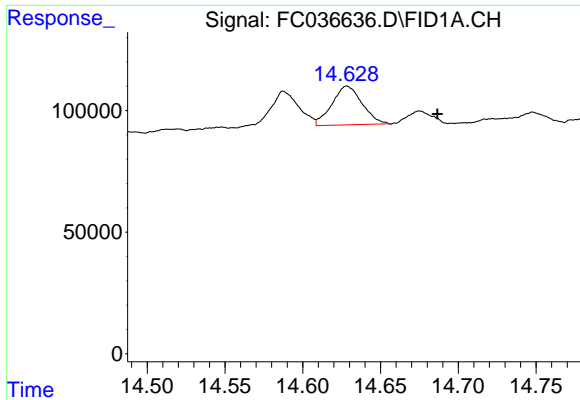
#12 1-chlorooctadecane (SURR)

R.T.: 12.825 min

Delta R.T.: -0.010 min

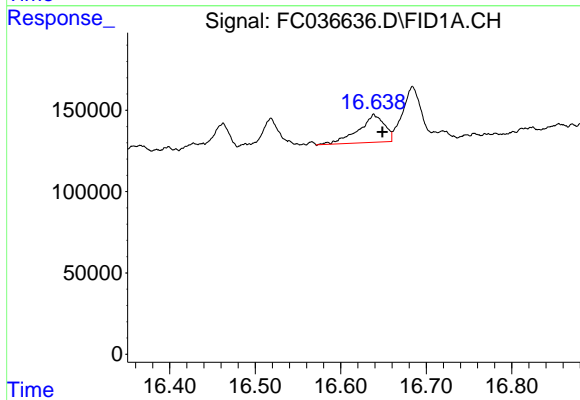
Response: 2197708

Conc: 23.34 ug/ml



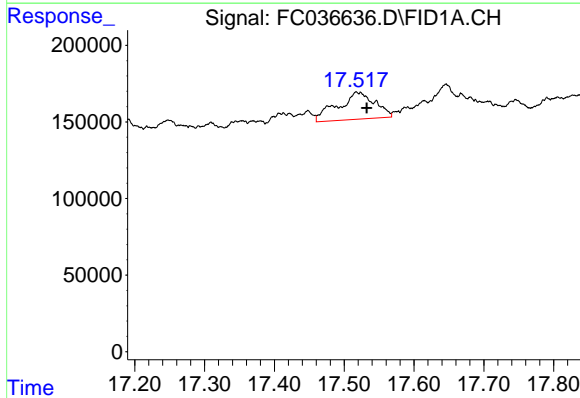
#14 n-Tetracosane (C24)

R.T.: 14.629 min
Delta R.T.: -0.058 min
Response: 214702
Conc: 1.97 ug/ml



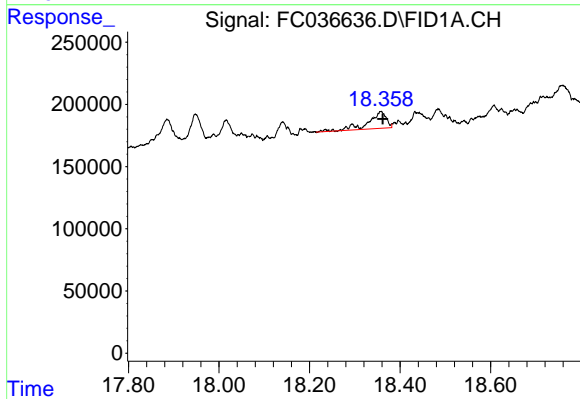
#16 n-Octacosane (C28)

R.T.: 16.639 min
Delta R.T.: -0.010 min
Response: 359247
Conc: 3.26 ug/ml



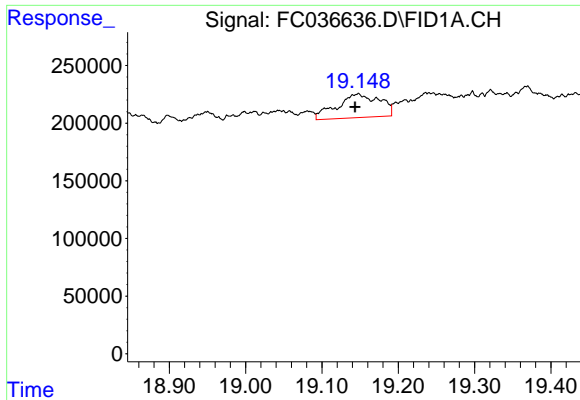
#17 n-Tricontane (C30)

R.T.: 17.519 min
Delta R.T.: -0.013 min
Response: 650196
Conc: 5.59 ug/ml



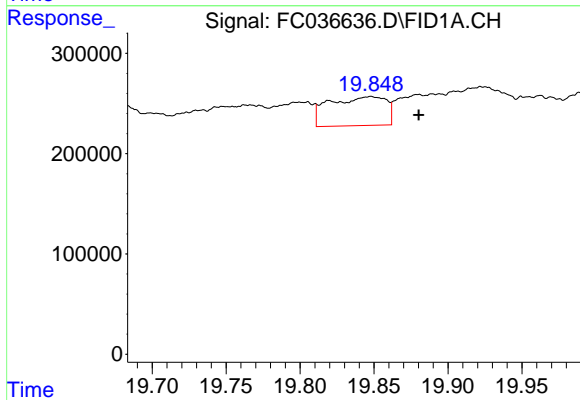
#18 n-Dotriacontane (C32)

R.T.: 18.358 min
Delta R.T.: -0.004 min
Response: 372315
Conc: 3.19 ug/ml



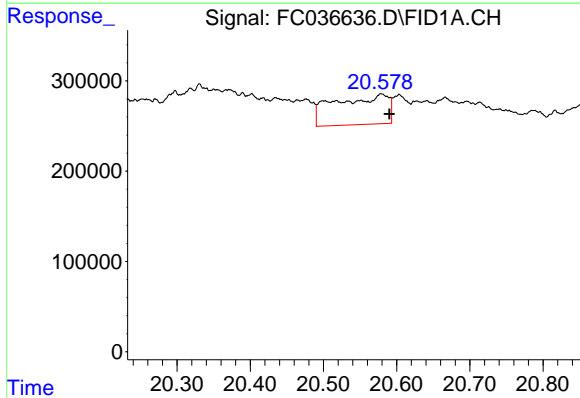
#19 n-Tetratriacontane (C34)

R.T.: 19.147 min
Delta R.T.: 0.003 min
Response: 794737
Conc: 7.09 ug/ml



#20 n-Hexatriacontane (C36)

R.T.: 19.848 min
Delta R.T.: -0.033 min
Response: 776724
Conc: 7.34 ug/ml



#21 n-Octatriacontane (C38)

R.T.: 20.579 min
Delta R.T.: -0.011 min
Response: 1672470
Conc: 15.82 ug/ml